



VCU

Virginia Commonwealth University
VCU Scholars Compass

Internal Medicine Publications

Dept. of Internal Medicine

2012

Inflammation, Coagulation and Cardiovascular Disease in HIV-Infected Individuals

Daniel A. Duprez
University of Minnesota

Jacqueline Neuhaus
University of Minnesota

Lewis H. Kuller
University of Pittsburgh

See next page for additional authors

Follow this and additional works at: http://scholarscompass.vcu.edu/intmed_pubs



Part of the [Medicine and Health Sciences Commons](#)

Copyright: © Duprez et al. This is an open-access article distributed under the terms of the Creative Commons Attribution License, which permits unrestricted use, distribution, and reproduction in any medium, provided the original author and source are credited.

Downloaded from

http://scholarscompass.vcu.edu/intmed_pubs/39

This Article is brought to you for free and open access by the Dept. of Internal Medicine at VCU Scholars Compass. It has been accepted for inclusion in Internal Medicine Publications by an authorized administrator of VCU Scholars Compass. For more information, please contact libcompass@vcu.edu.

Authors

Daniel A. Duprez, Jacqueline Neuhaus, Lewis H. Kuller, Russell Tracy, Waldo Belloso, Stephane De Wit, Fraser Drummond, H. Clifford Lane, Bruno Ledergerber, Jens Lundgren, Daniel Nixon, Nicholas I. Paton, and Ronald J. Prineas

Inflammation, Coagulation and Cardiovascular Disease in HIV-Infected Individuals

Daniel A. Duprez^{1*}, Jacqueline Neuhaus¹, Lewis H. Kuller², Russell Tracy³, Waldo Belloso⁴, Stephane De Wit⁵, Fraser Drummond⁶, H. Clifford Lane⁷, Bruno Ledergerber⁸, Jens Lundgren⁹, Daniel Nixon¹⁰, Nicholas I. Paton¹¹, Ronald J. Prineas¹², James D. Neaton¹ for the INSIGHT SMART Study Group

1 University of Minnesota, Minneapolis, Minnesota, United States of America, **2** University of Pittsburgh, Pittsburgh, Pennsylvania, United States of America, **3** University of Vermont, Burlington, Vermont, United States of America, **4** Hospital Italiano de Buenos Aires, Buenos Aires, Argentina, **5** Saint-Pierre Hospital, Brussels, Belgium, **6** Kirby Institute, Faculty of Medicine, University of New South Wales, Sydney, Australia, **7** National Institute of Allergy and Infectious Diseases, National Institutes of Health, Bethesda, Maryland, United States of America, **8** University Hospital Zurich, University of Zurich, Zurich, Switzerland, **9** University of Copenhagen, Copenhagen, Denmark, **10** Virginia Commonwealth University, Richmond, Virginia, United States of America, **11** Medical Research Council Clinical Trials Unit, London, United Kingdom, **12** Wake Forest University School of Medicine, Winston-Salem, North Carolina, United States of America

Abstract

Background: The SMART study was a trial of intermittent use of antiretroviral therapy (ART) (drug conservation [DC]) versus continuous use of ART (viral suppression [VS]) as a strategy to reduce toxicities, including cardiovascular disease (CVD) risk. We studied the predictive value of high sensitivity C-reactive protein (hsCRP), interleukin-6 (IL-6) and D-dimer with CVD morbidity and mortality in HIV-infected patients who were enrolled in SMART beyond other measured CVD risk factors.

Methods: A blood sample was available in 5098 participants who were enrolled in the SMART study for the measurement of IL-6, hsCRP and D-dimer. Hazard ratios (HR) with 95% CI for CVD events were estimated for each quartile (Q) for each biomarker vs the 1st quartile and for 1 SD higher levels. For both treatment groups combined, unadjusted and adjusted HRs were determined using Cox regression models.

Results: There were 252 participants who had a CVD event over a median follow-up of 29 months. Adjusted HRs (95% CI) for CVD for Q4 vs Q1 were 4.65 (2.61, 8.29), 2.10 (1.40, 3.16), and 2.14 (1.38, 3.33) for IL-6, hsCRP and D-dimer, respectively. Associations were similar for the DC and VS treatment groups (interaction p-values were >0.30). The addition of the three biomarkers to a model that included baseline covariates significantly improved model fit ($p < 0.001$). Area under the curve (AUC) estimates improved with inclusion of the three biomarkers in a model that included baseline covariates corresponding to other CVD risk factors and HIV factors (0.741 to 0.771; $p < 0.001$ for difference).

Conclusions: In HIV-infected individuals, IL-6, hsCRP and D-dimer are associated with an increased risk of CVD independent of other CVD risk factors. Further research is needed to determine whether these biomarkers can be used to improve CVD risk prediction among HIV positive individuals.

Citation: Duprez DA, Neuhaus J, Kuller LH, Tracy R, Belloso W, et al. (2012) Inflammation, Coagulation and Cardiovascular Disease in HIV-Infected Individuals. PLoS ONE 7(9): e44454. doi:10.1371/journal.pone.0044454

Editor: Claire Thorne, UCL Institute of Child Health, University College London, United Kingdom

Received: May 1, 2012; **Accepted:** August 3, 2012; **Published:** September 10, 2012

Copyright: © 2012 Duprez et al. This is an open-access article distributed under the terms of the Creative Commons Attribution License, which permits unrestricted use, distribution, and reproduction in any medium, provided the original author and source are credited.

Funding: Support for this work was provided by NIAD, United States National Institutes of Health grants U01AI068641, U01AI042170, and U01AI046362. The funders had no role in study design, data collection and analysis, decision to publish, or preparation of the manuscript.

Competing Interests: The authors have read the journal's policy and have the following conflicts. Russell Tracy declares the following work: Merck – seminar and consulting related to biomarkers in the setting of HIV; Abbott – seminar and consulting related to biomarkers in the setting of HIV; Tibotec-Johnson & Johnson – consulting related to biomarkers in the setting of HIV. All authors except Dr. Tracy have declared that no competing interests exist. This does not alter the authors' adherence to all the PLoS ONE policies on sharing data and materials.

* E-mail: dupre007@umn.edu

Introduction

Advances in the management of HIV disease and antiretroviral therapy (ART) have led to a prolonged disease-free survival in a substantial majority of HIV-infected individuals [1,2]. In parallel with these therapeutic advances, it has become clear that some ART also have serious adverse effects both in the short and long term [3,4]. Cardiovascular disease (CVD) is now a leading cause of death among HIV-infected individuals and rates of CVD appear to be increased in HIV versus non-HIV infected groups [5–7]. Reports from the D:A:D study implicated ART, and protease

inhibitor (PI) use in particular, as a possible determinant of CVD risk [8,9].

Findings from the Strategies for Management of Anti-Retroviral Therapy (SMART) trial fueled interest in the hypothesis that some component of CVD risk may be a consequence of HIV infection itself [10]. The SMART study was designed to examine intermittent use of ART as a strategy to reduce toxicities, including CVD risk. However, despite one-third less antiretroviral drug exposure, intermittent use of ART led to an increased CVD risk compared to continuous use of ART [11].

Studies have shown that HIV replication is an important determinant of endothelial dysfunction [12,13]. Immune activation and inflammation may explain some of the excess cardiovascular risk associated with HIV [14,15]. As a consequence of impaired endothelial function and inflammation, HIV-infected individuals may also be in a hypercoagulable state [16]. In previous SMART reports, we showed that baseline levels of IL-6, hsCRP and D-dimer were all strongly related to all-cause mortality [17], and that IL-6 and hsCRP, but not D-dimer, were associated with the development of AIDS events [18]. In this SMART report we examine the association of these biomarkers with CVD morbidity and mortality.

Methods

Ethics Statement

Prior to randomization, patients were asked to consent to storing blood for future research. The SMART study, including the consent for stored specimens, was approved by the institutional review board or ethics committee of each clinical site and of the University of Minnesota.

Design

The design, methods and results of the SMART trial have been previously published [10]. Between January 2002 and January 2006, 5,472 HIV-infected patients with a CD4+ T cell count >350 cells/mm³ were randomized to intermittent ART (drug conservation, DC) or continuous ART (viral suppression, VS). For patients in the DC group, ART was not used until the CD4+ count declined to <250 cells/mm³, at which time ART was initiated (or reinitiated) until the CD4+ count increased to more than 350 cells/mm³. VS patients were to use available ART in an uninterrupted manner with the goal of maximal and continuous suppression of HIV replication. As previously reported on January 11, 2006, enrollment was stopped and participants in the DC group were advised to restart ART. All participants were followed until July 11, 2007 (study closure) [19], resulting in a minimum follow-up of 18 months for each participant and a median follow-up of 29 months.

Biomarkers and Cardiovascular Outcomes

CVD events occurring through study closure were reviewed by an Endpoint Review Committee using pre-specified criteria blinded to treatment group [20]. The CVD composite outcome used in this report includes: CVD death, non-fatal myocardial infarction (MI) (clinical and silent as measured by annual resting ECG), non-fatal stroke, congestive heart failure (CHF), coronary revascularization, coronary artery disease requiring drug treatment, and peripheral arterial disease. Cause of death was determined using the Coding of Death in HIV (CoDe) system [21]. In this report, 19 deaths of unknown causes that were unwitnessed were considered CVD on the assumption that most would be CVD-related. These unwitnessed deaths do not include violent deaths and deaths attributed to suicide, substance abuse, and accidents by the Endpoint Review Committee. In selected analyses, CVD events are grouped as non-fatal coronary heart disease (CHD) (MI, coronary revascularization, and coronary artery disease requiring drug treatment), non-fatal atherosclerotic non-CHD (stroke and peripheral vascular disease), congestive heart failure (CHF) and CVD death.

Based on strong associations of hsCRP, IL-6 and D-dimer with all-cause mortality in a nested case-control study [17] and the observation that these biomarkers were elevated in HIV-

infected participants compared to those in the general population [22], these three markers were measured on stored plasma at baseline for all consenting participants by the Laboratory for Clinical Biochemistry Research at the University of Vermont. IL-6 was measured with Chemiluminescent Sandwich enzyme-linked immunosorbent assay (R&D Systems, Minneapolis, MN); hsCRP with a NMTM II nephelometer, N Antiserum to Human CRP (Siemens Diagnostics, Deerfield, IL); and D-dimer levels with immunoturbidometric methods on the Sta-R analyzer, Liatest D-DI (Diagnostica Stago, Parsippany, NJ). Lipids were centrally measured on serum by Quest Diagnostics, Inc. Lipids were measured on the Olympus AU5400. LDL cholesterol was directly measured. Fasting status influences triglyceride levels but has little effect on total and HDL cholesterol levels; 52% of sample obtained at baseline were fasting. Biomarkers and lipids were analyzed blinded to CVD event status and treatment group.

Statistical Methods

Time-to-event methods (Cox regression and Kaplan-Meier curves) were used to study associations of baseline levels of each biomarker with the CVD event. Our primary analysis focuses on the DC and VS groups combined. Separate analyses by quartile of each biomarker (defined using the entire cohort) were performed and hazard ratios (HRs) for each of the three upper quartiles versus the lowest quartile (reference group) are cited along with 95% confidence intervals (CIs). In addition to models that categorized the three biomarkers according to quartiles, models with log₁₀ transformed biomarkers were considered and the parameter estimates were used to determine the increase in risk of CVD associated with a one standard deviation (SD) higher biomarker level. Adjusted HRs were obtained by considering the following covariates: age, gender, race, ART use, plasma HIV RNA level, CD4+ count, prior AIDS diagnosis, smoking, BMI, prior CVD, diabetes, hypertension treatment, hyperlipidemia treatment, total/HDL cholesterol, presence of major ECG abnormalities [23], hepatitis B or C co-infection and treatment group.

HRs for different types of CVD events and analyses that considered multiple CVD events per patient were also carried out. The consistency of HRs for the different types of events associated with each biomarker were assessed with chi-square [24]. Separate analyses were also considered for the DC and VS groups separately, and results from models that included an interaction term between treatment group and log₁₀ biomarker levels are cited.

To determine whether the addition of IL-6, hsCRP, and D-dimer to other CVD risk factors and HIV-related measurements (i.e., the covariates cited above), improved model fit and risk prediction, we carried out a 3 degree of freedom likelihood ratio test and compared area under the receiver operating characteristic curve (AUC) (c index) for the model that included the three biomarkers plus baseline covariates mentioned above and for the model that only included the baseline covariates. The AUC for censored data estimates the probability that, of two randomly chosen patients, that the patient with the higher prognostic score remains free of CVD longer [25]. We used a method for estimating AUC after 29 months (the median follow-up of the cohort) described by Chambless and Diao (method 1 in their report) [26]. Statistical analyses were performed using SAS (Version 9.2, Carey, NC). All reported p-values are 2-sided; $p < 0.05$ is considered statistically significant.

Results

During a median follow-up of 29 months, 252 participants experienced at least one CVD event. Numbers experiencing each type of event were: CVD death (n = 44), non-fatal MI (n = 67), non-fatal stroke (n = 20), CHF (n = 30), coronary revascularization (n = 63), coronary artery disease requiring drug treatment (n = 51), and peripheral arterial disease (n = 51). Fifty-four participants experienced more than one CVD event. Table 1 summarizes differences in major CVD risk factors and HIV-related factors for participants with and without CVD events. P-values corresponding to univariate associations and to associations that adjust for age and gender are shown. hsCRP, IL-6 and D-dimer were associated with an increased risk of CVD in both the univariate and age and gender adjusted analyses. Kaplan-Meier curves for quartiles (quartile cut-points are given in figure legend) of each biomarker show good separation of the four curves for IL-6 and for the upper two quartiles versus the lower two quartiles for hsCRP and D-dimer (Figure 1).

In a regression model that included all three biomarkers and baseline covariates used for adjustment (see Methods), higher levels of IL-6 ($p < 0.001$), hsCRP ($p = 0.003$), and D-dimer ($p = 0.002$), older age ($p < 0.001$), male gender ($p = 0.04$), higher CD4+ T cell count ($p = 0.02$), prior AIDS ($p = 0.01$), smoking ($p = 0.002$), prior CVD ($p = 0.02$), diabetes ($p = 0.05$), antihypertensive therapy ($p < 0.001$), and the presence of major ECG abnormalities ($p = 0.03$) were associated with an increased risk of CVD. The addition of the three biomarkers to the model that included other baseline covariates significantly improved model fit (likelihood ratio $\chi^2(3df) = 52.2$; $p < 0.001$). AUC estimates at 29 months based on models without and with the three biomarkers were 0.741 and 0.771 ($p < 0.001$ for difference). The two ROC curves are shown in Figure 2. The “basic” model refers to the model based on the covariates used for adjustment and cited in Methods and in the figure legend. The “extended” model includes all of the covariates in the “basic” model plus the three biomarkers.

Table 2 gives adjusted HRs of CVD for each biomarker considered separately. Risk gradients with CVD were evident for each biomarker in the quartile analysis and also for the models which treated each biomarker as a continuous variable. For the latter analysis, for each biomarker, a 1 standard deviation (SD) higher level was associated with approximately a 40% increased risk of CVD. As a sensitivity analysis, we repeated these analyses excluding the 19 unwitnessed deaths. The findings were almost identical as those shown in Table 2. For example, adjusted HRs associated with a 1 SD higher level of IL-6, hsCRP, and D-dimer were 1.39 (95% CI: 1.25–1.55), 1.43 (95% CI: 1.23–1.65), and 1.38 (95% CI: 1.19–1.60), respectively.

Associations between IL-6, hsCRP and D-dimer and CVD were similar for the DC and VS groups. Interaction p-values for treatment and log-transformed biomarker levels were 0.39, 0.31, and 0.87 for IL-6, hsCRP, and D-dimer, respectively. Adjusted HRs for 1 SD higher IL-6, hsCRP, and D-dimer were 1.34 (95% CI: 1.17–1.53), 1.57 (95% CI: 1.30–1.89), and 1.35 (95% CI: 1.11–1.64) for DC participants and 1.55 (95% CI: 1.29–1.86), 1.25 (95% CI: 1.01–1.55), and 1.43 (95% CI: 1.16–1.76) for VS participants.

For each biomarker, associations with different types of CVD event did not vary ($p = 0.10$ for IL-6, $p = 0.45$ for hsCRP, and $p = 0.15$ for D-dimer). In an analysis that considered multiple events per patient the adjusted HRs per 1 SD higher level of the biomarker were 1.36 ($p < 0.001$), 1.47 ($p < 0.001$) and 1.43 ($p < 0.001$) for IL-6, hsCRP and D-dimer respectively. Most events

were CHD. Adjusted HRs per 1 SD higher level of each biomarker for fatal and non-fatal CHD events or unwitnessed death (n = 160) were 1.37 (1.17, 1.59; $p < 0.001$) for IL-6, 1.18 (1.00, 1.40; $p = 0.05$) for hsCRP and 1.33 (1.10, 1.61; $p = 0.003$) for D-dimer. Adjusted HRs comparing the 4th versus 1st quartile for this outcome were 5.23 ($p < 0.001$), 1.80 ($p = 0.03$), and 1.76 ($p = 0.06$), for IL-6, hsCRP, and D-dimer, respectively.

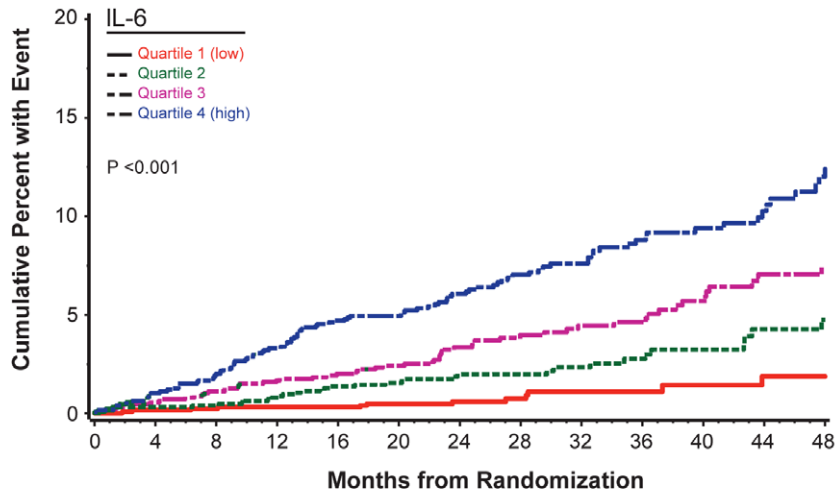
The joint relationship between IL-6 and D-dimer and between hsCRP and D-dimer with CVD were also considered (Table 3). After log transformation, the correlations between IL-6 and D-dimer and between hsCRP and D-dimer were 0.33 ($p < 0.001$) and 0.20 ($p < 0.001$), respectively. The correlation between IL-6 and hsCRP was 0.47 ($p < 0.001$). When both IL-6 and D-dimer are above the median level the adjusted HR versus those with both IL-6 and D-dimer below the median was 3.96 (95% CI: 2.41–6.51). The p-value for interaction between IL-6 and D-dimer was 0.06. When both hsCRP and D-dimer were considered their effects on CVD risk were additive ($p = 0.72$ for interaction). When either of hsCRP or D-dimer was above the median risk was increased about 2-fold compared to those with both markers below the median. When both hsCRP and D-dimer were above the median level the adjusted HR versus those with levels below the median was 3.28 (95% CI: 2.04–5.28).

Discussion

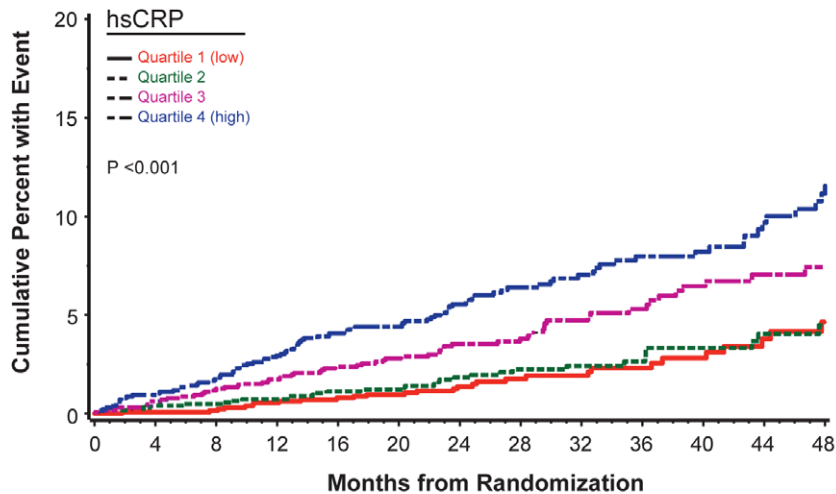
Elevated baseline levels of IL-6, hsCRP and D-dimer were significantly related to CVD and these associations remained after adjustment for CVD risk factors and when considered jointly. The associations of IL-6, hsCRP and D-dimer with different types of CVD events did not differ. Although hyperlipidemia has clearly been linked to the development of atherosclerosis, the potential role of inflammatory mechanisms in the initiation, progression and rupture of the atheromatous plaque has been appreciated only the last decade [27,28]. A wide range of infections have been associated with persistent inflammation, which itself has been hypothesized to accelerate atherosclerosis [29]. Untreated HIV infection is characterized by increased levels of pro-inflammatory cytokines such as IL-6 and hsCRP, and increased expression of adhesion molecules, factors identified to be important in the pathogenesis of atherosclerosis [14]. These findings suggest that HIV-associated inflammation and associated thrombosis and fibrinolysis are determinants of CVD risk in individuals infected with HIV [30,31].

Inflammatory cascades are propagated by proximal mediators such as IL-6, which exerts pro-inflammatory effects including stimulation of the liver to produce positive acute-phase proteins during tissue injury or infection. Initially, epidemiological studies of coronary heart disease (CHD) and inflammation focused on “downstream” acute phase reactants, e.g., fibrinogen and hsCRP. In a meta-analysis of 160,309 participants, after adjustment for other CVD risk factors a 1 SD higher CRP level was associated with a 37% higher risk of CHD death, a 55% higher risk of CVD death and a 43% higher risk of non-CVD death [32]. In SMART, a 1 SD higher hsCRP was associated with an 18% increased risk of fatal or non-fatal CHD and a 57% increased risk of fatal or non-fatal CVD. In a previous report, we found that higher levels of hsCRP were significantly related to all-cause mortality [17].

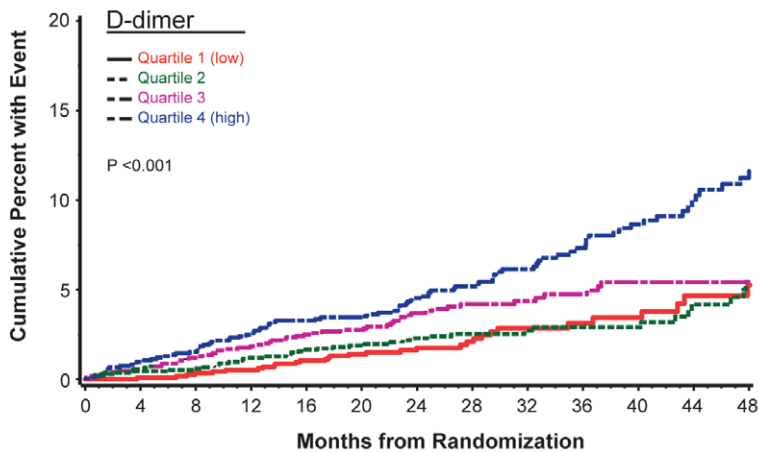
More recently there have been several prospective studies of IL-6 and CHD. In an overview of studies of IL-6 and CHD, a 1 SD higher level of IL-6 was associated with a 26% increased risk [33]. In SMART, a 1 SD higher level was associated with a 39% increased risk of our CVD composite and a 37% increased risk of fatal or non-fatal CHD. In that overview, the authors noted that



Q1:	1264	1251	1240	1233	1227	1045	820	600	446	335	281	214	168
Q2:	1249	1240	1232	1223	1212	1050	799	620	505	411	342	250	203
Q3:	1265	1248	1234	1220	1205	1052	877	693	559	468	396	295	246
Q4:	1259	1239	1213	1182	1149	1019	858	696	574	483	395	287	228



Q1:	1280	1272	1262	1250	1240	1083	864	646	513	413	346	256	202
Q2:	1265	1247	1236	1228	1215	1055	848	652	518	430	355	260	208
Q3:	1277	1261	1246	1234	1215	1053	853	679	532	433	361	278	221
Q4:	1273	1255	1233	1204	1178	1029	834	667	549	445	377	272	225



Q1:	1169	1161	1152	1145	1133	967	732	542	423	341	271	199	157
Q2:	1352	1337	1326	1312	1298	1117	879	669	529	433	358	274	215
Q3:	1254	1242	1225	1209	1192	1043	848	676	542	431	376	284	229
Q4:	1294	1269	1247	1223	1198	1071	923	746	610	511	428	303	250

Figure 1. Kaplan-Meier Curves of Cardiovascular Disease (CVD) Events for Interleukin-6 (IL-6), High Sensitivity C-Reactive Protein (hsCRP) and D-dimer. Cumulative percent of participants developing CVD by quartile of IL-6 (percentile cut-off points for IL-6 quartiles are: <1.10, 1.10–1.76, 1.77–3.01, >3.01 pg/mL) (top); cumulative percent of participants developing CVD by quartile of hsCRP (percentile cut-off points for hsCRP quartiles are: <0.72, 0.72–1.71, 1.72–4.17, >4.17 µg/mL) (middle); cumulative percent of participants developing CVD by quartile of D-dimer (percentile cut-off points for D-dimer quartiles are: <0.13, 0.13–0.21, 0.22–0.37, >0.37 µg/mL) (bottom). doi:10.1371/journal.pone.0044454.g001

due to within-person variability (biologic and laboratory variability) the risk of CHD associated with IL-6 was underestimated. With adjustment for this regression dilution bias, they found an 83% increased risk of CHD associated with a 1 SD higher IL-6. The associations we report in SMART are also likely attenuated.

It has been suggested that modestly elevated circulating D-dimer values reflect minor increases in blood coagulation, thrombin formation, and turnover of cross-linked intravascular fibrin and that these increases may be relevant to CHD. D-dimer values may also reflect inflammatory states. In a meta-analysis of

D-dimer and CHD, the adjusted odds ratio (upper versus lowest tertile of D-dimer) was 1.79 (95% CI, 1.36 to 2.36) [34]. In our study, risk ratios for the 4th versus 1st quartile were 1.76 for fatal or non-fatal CHD and 2.14 for our CVD composite. In SMART the risk ratios associated with higher D-dimer levels for CVD were much smaller than previously reported risk ratios for all cause mortality [17]. In this respect our findings are similar to findings in older participants in the Multiethnic Study of Atherosclerosis (MESA) [35]. In that report, 6,391 participants were followed for an average of 4.6 years and 307 CVD events, 207 CHD events

Table 1. Baseline characteristics: Demographics, HIV factors, CVD risk factors and biomarkers for SMART participants who developed a CVD event and those who did not.

	Participants with CVD event (N = 252)	Participants without CVD event (N = 4846)	p-value ¹	p-value ²
Treatment group (% DC)	56.3	49.8	0.04	0.04
Demographics				
Age (median, IQR)	49 (44, 56)	43 (38, 50)	<0.001	NA
Gender (% female)	19.0	26.3	0.02	NA
Black (%)	39.7	28.7	0.02	0.003
Injection drug use (%)	13.1	9.9	0.36	0.30
CD4+ (cells/mm ³) (median, IQR)	579 (458, 858)	600 (468, 792)	0.12	0.11
CD4+ nadir (cells/mm ³) (median, IQR)	236 (120, 350)	252 (157, 360)	0.13	0.44
HIV-RNA ≤400 copies/mL (%)	67.7	71.2	0.77	0.60
Prior AIDS-related illnesses (%)	36.5	23.9	<0.001	<0.001
Hepatitis B (%)	2.0	2.5	0.59	0.64
Hepatitis C (%)	20.2	15.0	0.09	0.13
CVD Risk Factors				
Current smoker (%)	52.4	40.9	<0.001	<0.001
Diabetes (%)	17.1	6.6	<0.001	<0.001
Prior CVD (%)	13.1	3.2	<0.001	<0.001
Major ECG abnormality (%)	21.1	8.7	<0.001	<0.001
Blood pressure lowering drugs(%)	44.4	18.0	<0.001	<0.001
Lipid lowering drugs (%)	27.8	15.6	<0.001	0.04
BMI (kg/m ²) (median, IQR)	25.7 (22.3, 28.9)	25.0 (22.5, 28.1)	0.75	0.34
Lipids				
Total cholesterol (mg/dL) (median, IQR)	197 (171, 233)	191 (163, 221)	0.003	0.08
HDL cholesterol (mg/dL) (median, IQR)	38 (31, 49)	41 (33, 51)	0.03	0.04
LDL cholesterol (mg/dL) (median, IQR)	111 (89, 141)	112 (90, 135)	0.27	0.66
Triglycerides (mg/dL) (median, IQR)	192 (134, 308)	163 (105, 260)	0.05	0.30
Total/HDL cholesterol (median, IQR)	5.2 (3.9, 6.8)	4.6 (3.6, 5.9)	<0.001	0.005
Inflammation and Coagulation Biomarkers				
hsCRP (µg/mL) (median, IQR)	3.34 (1.47, 7.51)	1.67 (0.70, 4.02)	<0.001	<0.001
IL-6 (pg/mL) (median, IQR)	3.07 (1.87, 4.83)	1.72 (1.07, 2.92)	<0.001	<0.001
D-dimer (µg/mL) (median, IQR)	0.31 (0.18, 0.59)	0.20 (0.13, 0.36)	<0.001	<0.001

¹P-values from univariate Cox models.

²P-values adjusted for age and gender. Log₁₀ transformed levels were used for biomarker analyses.

CVD: Cardiovascular Disease, DC: Drug Conservation, BMI: Body Mass Index, NA: not applicable.

doi:10.1371/journal.pone.0044454.t001

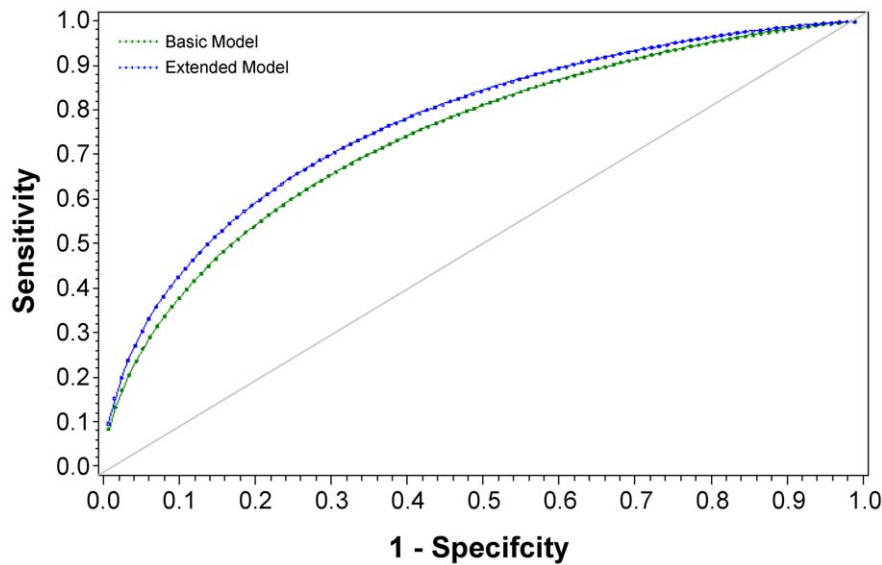


Figure 2. Receiver-Operating Characteristic (ROC) Curve for “Basic” and “Extended” Models for 29 Month Risk of Cardiovascular Disease (CVD) in SMART. The “basic” model included the following baseline covariates: age, gender, race, ART use, plasma HIV RNA level, CD4+ cell count, prior AIDS diagnosis, smoking, BMI, prior CVD, diabetes, hypertension treatment, hyperlipidemia treatment, total/HDL cholesterol, presence of major ECG abnormalities, hepatitis B or C co-infection and treatment group. The “extended” model includes these covariates plus hsCRP, IL-6 and D-dimer after log₁₀ transformation. doi:10.1371/journal.pone.0044454.g002

and 210 deaths were observed. Age, sex, race and risk-factor adjusted hazard ratios for the 4th versus 1st quartile of D-dimer were 1.08 (95% CI: 0.75–1.55) for CVD, 1.27 (95% CI: 0.80–2.01) for CHD, and 2.57 (95% CI: 1.54–4.27) for all-cause mortality. There have been few studies examining the association of D-dimer with CVD in HIV-infected participants. In a case-control study of 52 CVD events, Ford et al. found that D-dimer levels but not hsCRP or IL-6 levels were significantly elevated 4 months and 2 years prior to developing the CVD event as compared to matched controls [36].

Even though treatment interruption led to an increase in IL-6, hsCRP and D-dimer and treatment initiation led to a decline in D-dimer [14,37], associations of these markers at baseline with the development of CVD events were similar for DC and VS patients. We have previously shown that these markers are elevated even in patients taking ART with a suppressed viral load [22]. This,

coupled with the fact that DC participants were advised to re-initiate ART midway through the study, likely makes it difficult to detect any differences in baseline associations of these markers with risk of CVD that might have been influenced by changes during follow-up. Further research is needed on serial patterns of these markers with different clinical outcomes.

Even though the likelihood-based method of model fit indicated significant improvement (p<0.001) with the addition of the three biomarkers to a model that included other CVD and HIV risk factors, the improvement in CVD risk discrimination as measured by the AUC was modest. Further research on the utility of these biomarkers for classifying participants by CVD risk is needed, including risk reclassification methods with the models described here applied to other cohorts.

There are some limitations of this analysis. We studied the association of a single measurement of the inflammatory markers

Table 2. Hazard ratios for cardiovascular disease (CVD) associated with baseline biomarker levels.

Biomarker Quartile ¹	IL-6		hsCRP		D-dimer	
	No. with CVD (Rate per 100 person years)	Adjusted HR ² (95% CI)	No. with CVD (Rate per 100 person years)	Adjusted HR ² (95% CI)	No. with CVD (Rate per 100 person years)	Adjusted HR ² (95% CI)
Lowest	16 (0.5)	1.00	37 (1.1)	1.00	34 (1.1)	1.00
2nd	35 (1.0)	1.68 (0.88–3.18)	36 (1.0)	0.91 (0.57–1.48)	44 (1.2)	1.14 (0.71–1.83)
3rd	67 (1.9)	2.81 (1.55–5.08)	68 (2.0)	1.46 (0.95–2.23)	66 (1.9)	1.57 (1.00–2.46)
Highest	122 (3.5)	4.65 (2.61–8.29)	110 (3.2)	2.10 (1.40–3.16)	105 (2.9)	2.14 (1.38–3.33)
HR ² associated with 1 SD ³ higher (95% CI)		1.39 (1.25–1.54)		1.43 (1.24–1.64)		1.40 (1.21–1.61)

¹Quartile cut-points are given in the legend for Figure 1.

²Adjusted for age, gender, race, ART, plasma HIV RNA level, CD4+ T cell count, prior AIDS diagnosis, smoking, BMI, prior CVD, diabetes, hypertension treatment, hyperlipidemia treatment, total/HDL cholesterol, ECG abnormalities, hepatitis B or C co-infection, and treatment group.

³Standard deviations (SDs) after log₁₀ transformation were 0.34 pg/mL for IL-6, 0.54 µg/mL for hsCRP, and 0.42 µg/mL for D-dimer.

doi:10.1371/journal.pone.0044454.t002

Table 3. Joint relationship between IL-6, D-dimer and hs-CRP, D-dimer with cardiovascular disease (CVD).

Bivariate Association of IL-6 and D-dimer with CVD						
IL-6 ¹	D-dimer ¹	No. with CVD (Rate per 100 person years)	Unadjusted HR (95% CI)	p-value	Adjusted HR ² (95% CI)	p-value ²
<median	<median	26 (0.6)	1.0			
>median	<median	48 (1.9)	2.96 (1.84–4.77)	<.001	2.68 (1.58–4.56)	<.001
<median	>median	25 (1.0)	1.52 (0.88–2.64)	0.133	1.70 (0.93–3.09)	0.084
>median	>median	141 (3.2)	4.86 (3.20–7.39)	<.001	3.96 (2.41–6.51)	<.001
Bivariate Association of hsCRP and D-dimer with CVD						
hsCRP ¹	D-dimer ¹	No. with CVD (Rate per 100 person years)	Unadjusted HR (95% CI)	p-value	Adjusted HR ² (95% CI)	p-value ²
<median	<median	25 (0.6)	1.0			
>median	<median	52 (1.9)	2.90 (1.80–4.67)	<.001	2.22 (1.33–3.70)	0.002
<median	>median	46 (1.6)	2.39 (1.47–3.90)	<.001	2.01 (1.19–3.40)	0.009
>median	>median	125 (3.0)	4.65 (3.02–7.14)	<.001	3.28 (2.04–5.28)	<.001

¹Quartile cut-points are given in the legend for Figure 1.

²Adjusted for age, gender, race, ART, plasma HIV RNA level, CD4+ T cell count, prior AIDS diagnosis, smoking, BMI, prior CVD, diabetes, hypertension treatment, hyperlipidemia treatment, total/HDL cholesterol, ECG abnormalities, hepatitis B or C co-infection, and treatment group.
doi:10.1371/journal.pone.0044454.t003

and coagulation factor at the beginning of the study with CVD. Thus, associations reported are likely underestimated. Also, we studied only a limited number of biomarkers from the inflammatory and thrombotic/fibrinolysis pathways. Strengths of this study are that CVD outcomes were pre-specified and adjudicated by an endpoint review committee and adjustment for most major CVD risk factors was possible.

In conclusion, this study demonstrated that thrombosis and inflammation are inextricably intertwined in the biology of atherosclerosis in HIV-infected individuals. The current findings do not, of course, establish causality, but they may have implications for understanding disease mechanisms and for further research strategies [38]. Further studies are warranted to

determine if therapies that result in lowering of these biomarkers lead to reductions in risk of CVD.

Acknowledgments

We would like to acknowledge the SMART participants and, the SMART investigators (see Ref. 10, pp. 2294–2295 for list of investigators).

Author Contributions

Conceived and designed the experiments: DAD LHK RT HCL JL JDN. Performed the experiments: RT WB SDW FD HCL BL JL DN NIP RJP. Analyzed the data: JN JDN. Contributed reagents/materials/analysis tools: RT DAD RJP. Wrote the paper: DAD JN JDN. Edited the manuscript: LHK RT WB SDW FD HCL BL JL DN NIP RJP.

References

- Hogg RS, Heath KV, Yip B, Craib KJ, O'Shaughnessy MV, et al. (1998) Improved survival among HIV-infected individuals following initiation of antiretroviral therapy. *JAMA* 279(6): 450–454.
- Mocroft A, Ledergerber B, Katlama C, Kirk O, Reiss P, et al. (2003) Decline in AIDS and death rates in the EuroSIDA study: an observational study. *Lancet* 362(9377): 22–29.
- Calmy A, Hirschel B, Cooper DA, Carr A (2009) A new era of antiretroviral drug toxicity. *Antivir Ther* 14(2): 165–179.
- DAD Study Group, Friis-Møller N, Reiss P, Sabin CA, Weber R, et al. (2007) Class of antiretroviral drugs of myocardial infarction. *N Engl J Med* 356(17): 1723–1735.
- Currier JS, Lundgren JD, Carr A, Klein D, Sabin CA, et al. (2008) Epidemiological evidence for cardiovascular disease in HIV-infected patients and relationship to highly active antiretroviral therapy. *Circulation* 118(2): e29–35.
- Baker JV, Lundgren JD (2011) Cardiovascular implications from untreated human immunodeficiency virus infection. *Eur Heart J* 32(8): 945–951.
- Ho JE, Hsue PY (2009) Cardiovascular manifestations of HIV infection. *Heart* 95(14): 1193–1202.
- Friis-Møller N, Sabin CA, Weber R, d'Arminio Monforte A, El-Sadr WM, et al. (2003) Combination antiretroviral therapy and the risk of myocardial infarction. *N Engl J Med* 349(21): 1993–2003.
- D:A:D Study Group, Sabin CA, Worm SW, Weber R, Reiss P, et al. (2008) Use of nucleoside reverse transcriptase inhibitors and risk of myocardial infarction in HIV-infected patients enrolled in the D:A:D study: a multi-cohort collaboration. *Lancet* 371(9622): 1417–1426.
- Strategies for Management of Antiretroviral Therapy (SMART) Study Group (2006) CD4+ count-guided interruption of antiretroviral treatment. *N Engl J Med* 355(22): 2283–2296.
- Phillips AN, Carr A, Neuhaus J, Vignegarwala F, Prineas R, et al. (2008) Interruption of antiretroviral therapy and risk of cardiovascular disease in persons with HIV-1 infection: exploratory analyses from the SMART trial. *Antivir Ther* 13(2): 177–187.
- Blum A, Hadas V, Burke M, Yust I, Kessler A (2005) Viral load of the human immunodeficiency virus could be an independent risk factor for endothelial dysfunction. *Clin Cardiol* 28(3): 149–153.
- Hsue PY, Hunt PW, Wu Y, Schnell A, Ho JE, et al. (2009) Association of abacavir and impaired endothelial function in treated and suppressed HIV-infected patients. *AIDS* 23(15): 2021–2027.
- Baker JV, Duprez D (2010) Biomarkers and HIV-associated cardiovascular disease. *Curr Opin HIV AIDS* 5(6): 511–516.
- Paella EJ Jr, Phair JP (2011) Cardiovascular disease in HIV infection. *Curr Opin HIV AIDS* 6(4): 266–271.
- Shen YMP, Frenkel EP (2004) Thrombosis and hypercoagulable state in HIV-infected patients. *Clin Appl Thrombosis/Hemostasis* 10(3): 277–280.
- Kuller LH, Tracy R, Bellosso W, De Wit S, Drummond F, et al. (2008) Inflammatory and coagulation biomarkers and mortality in patients with HIV infection. *PLoS Med* 5(10): e203.
- Rodger AJ, Fox Z, Lundgren JD, Kuller LH, Boesecke C, et al. (2009) Activation and coagulation biomarkers are independent predictors of the development of opportunistic disease in patients with HIV infection. *J Infect Dis* 200(6): 973–983.
- SMART Study Group, El-Sadr WM, Grund B, Neuhaus J, Babiker A, et al. (2008) Risk for opportunistic disease and death after reinitiating continuous

- antiretroviral therapy in patients with HIV previously receiving episodic therapy: a randomized trial. *Ann Intern Med* 149(5): 289–299.
20. Lifson AR; INSIGHT Endpoint Review Committee Writing Group, Belloso WH, Davey RT, Duprez D, et al. (2010) Development of diagnostic criteria for serious non-AIDS events in HIV clinical trials. *HIV Clin Trials* 11(4): 205–219.
 21. Kowalska JD, Friis-Møller N, Kirk O, Bannister W, Mocroft A, et al. (2011) The Coding Causes of Death in HIV (CoDe) Project: initial results and evaluation of methodology. *Epidemiology* 22(4): 516–523.
 22. Neuhaus J, Jacobs DR Jr, Baker JV, Calmy A, Duprez D, et al. (2010) Markers of inflammation, coagulation, and renal function are elevated in adults with HIV infection. *J Infect Dis* 201(12): 1788–1795.
 23. Soliman EZ, Princeas RJ, Roediger MP, Duprez DA, Boccardi F, et al. (2011) Prevalence and prognostic significance of ECG abnormalities in HIV-infected patients: results from the Strategies for Management of Antiretroviral Therapy study. *J Electrocardiol* 44(6): 779–785.
 24. Wei LJ, Lin DY, Weissfeld L (1989) Regression analysis of multivariate incomplete failure time data by modeling marginal distributions. *J Am Stat Assoc* 84: 1065–1073.
 25. Harrell FE Jr, Califf RM, Pryor DB, Lee KL, Rosati RA (1982) Evaluating the yield of medical tests. *JAMA* 247(18): 2543–2546.
 26. Chambless LE, Diao G (2006) Estimation of time-dependent area under the ROC curve for long-term risk prediction. *Stat Med* 25(20): 3474–3486.
 27. Libby P, Ridker P, Hansson GK (2011) Progress and challenges in translating the biology of atherosclerosis. *Nature* 473(7347): 317–325.
 28. Croce K, Libby P (2007) Intertwining of thrombosis and inflammation in atherosclerosis. *Curr Opin Hematol* 14(1): 55–61.
 29. Shorr AF, Thomas SJ, Alkins SA, Fitzpatrick TM, Ling GS (2002) D-dimer correlates with proinflammatory cytokine levels and outcomes in critically ill patients. *Chest* 121(4): 1262–1268.
 30. Baker J, Quick H, Hullsiek KH, Tracy R, Duprez D, et al. (2010) Interleukin-6 and d-dimer levels are associated with vascular dysfunction in patients with untreated HIV infection. *HIV Med* 11(9): 608–609.
 31. Karpatkin S, Nardi M, Green D (2002) Platelet and coagulation defects associated with HIV-1-infection. *Thromb Haemost* 88(3): 389–401.
 32. The Emerging Risk Factors Collaboration (2010) C-reactive protein concentration and risk of coronary heart disease, stroke, and mortality: an individual participant meta-analysis. *Lancet* 375(9709): 132–140.
 33. Danesh J, Kaptoge S, Mann AG, Sarwar N, Wood A, et al. (2008) Long-term interleukin-6 levels and subsequent risk of coronary heart disease: two new prospective studies and a systematic review. *PLoS Med* 5(4): e78.
 34. Danesh J, Whincup P, Walker M, Lennon L, Thomson A, et al. (2001) Fibrin D-dimer and coronary heart disease: prospective study and meta-analysis. *Circulation* 103(19): 2323–2327.
 35. Folsom AR, Delaney JA, Lutsey PL, Zakai NA, Jenny NS, et al. (2009) Associations of factor VIIIc, D-dimer, and plasmin-antiplasmin with incident cardiovascular disease and all-cause mortality. *Am J Hematol* 84(6): 349–353.
 36. Ford ES, Greenwald JH, Richterman AG, Rupert A, Dutcher L, et al. (2010) Traditional risk factors and D-dimer predict incident cardiovascular disease events in chronic HIV infection. *AIDS* 24(10): 1509–1517.
 37. Baker JV, Neuhaus J, Duprez D, Kuller LH, Tracy R, et al. (2011) Changes in inflammatory and coagulation biomarkers: a randomized comparison of immediate versus deferred antiretroviral therapy in patients with HIV infection. *J Acquir Immune Defic Syndr* 56(1): 36–43.
 38. Grinspoon SK, Grunfeld C, Kotler DP, Currier JS, Lundgren JP, et al. (2008) State of the science conference: Initiative to decrease cardiovascular risk and increase quality of care for patients living with HIV/AIDS: executive summary. *Circulation* 118(2): 198–210.