



VCU

Virginia Commonwealth University
VCU Scholars Compass

Internal Medicine Publications

Dept. of Internal Medicine

2015

Correlation between mass and volume of collected blood with positivity of blood cultures

Lariessa Neves

Hospital Israelita Albert Einstein

Alexandre Rodrigues Marra

Instituto Israelita de Ensino e Pesquisa Albert Einstein, Hospital Israelita Albert Einstein, alexandre.marra@einstein.br

Thiago Zinsly Sampaio Camargo

Hospital Israelita Albert Einstein

See next page for additional authors

Follow this and additional works at: http://scholarscompass.vcu.edu/intmed_pubs



Part of the [Medicine and Health Sciences Commons](#)

Copyright © Neves et al. 2015 Open Access: This article is distributed under the terms of the Creative Commons Attribution 4.0 International License (<http://creativecommons.org/licenses/by/4.0/>), which permits unrestricted use, distribution, and reproduction in any medium, provided you give appropriate credit to the original author(s) and the source, provide a link to the Creative Commons license, and indicate if changes were made. The Creative Commons Public Domain Dedication waiver (<http://creativecommons.org/publicdomain/zero/1.0/>) applies to the data made available in this article, unless otherwise stated.

Downloaded from

http://scholarscompass.vcu.edu/intmed_pubs/97

This Article is brought to you for free and open access by the Dept. of Internal Medicine at VCU Scholars Compass. It has been accepted for inclusion in Internal Medicine Publications by an authorized administrator of VCU Scholars Compass. For more information, please contact libcompass@vcu.edu.

Authors

Lariessa Neves, Alexandre Rodrigues Marra, Thiago Zinsly Sampaio Camargo, Maura Cristina dos Santos, Flávia Zulin, Patrícia Candido da Silva, Natália Ariede de Moura, Elivane da Silva Victor, Jacyr Pasternak, Oscar Fernando Pavão dos Santos, Michael B. Edmond, and Marines Dalla Valle Martino

RESEARCH ARTICLE

Open Access



Correlation between mass and volume of collected blood with positivity of blood cultures

Lariessa Neves¹, Alexandre Rodrigues Marra^{2,3*}, Thiago Zinsly Sampaio Camargo¹, Maura Cristina dos Santos¹, Flávia Zulin¹, Patrícia Candido da Silva¹, Natália Ariede de Moura¹, Elivane da Silva Victor², Jacyr Pasternak⁴, Oscar Fernando Pavão dos Santos³, Michael B. Edmond⁵ and Marines Dalla Valle Martino⁴

Abstract

Background: The collection of blood cultures is an extremely important method in the management of patients with suspected infection. Microbiology laboratories should monitor blood culture collection.

Methods: Over an 8-month period we developed a prospective, observational study in an adult Intensive Care Unit (ICU). We correlated the mass contained in the blood vials with blood culture positivity and we also verified the relationship between the mass of blood and blood volume collected for the diagnosis of bloodstream infection (BSI), as well as we explored factors predicting positive blood cultures.

Results: We evaluated 345 patients with sepsis, severe sepsis or septic shock for whom blood culture bottles were collected for the diagnosis of BSI. Of the 55 patients with BSI, 40.0 % had peripheral blood culture collection only. BSIs were classified as nosocomial in 34.5 %. In the multivariate model, the blood culture mass (in grams) remained a significant predictor of positivity, with an odds ratio 1.01 (i.e., for each additional 1 mL of blood collected there was a 1 % increase in positivity; 95 % CI 1.01–1.02, $p = 0.001$; Nagelkerke R Square [R^2] = 0.192). For blood volume collected, the adjusted odds ratio was estimated at 1.02 (95 % CI: 1.01–1.03, $p < 0.001$; $R^2 = 0.199$). For each set of collected blood cultures beyond one set, the adjusted odds ratio was estimated to be 1.27 (95 % CI: 1.14–1.41, $p < 0.001$; $R^2 = 0.221$).

Conclusions: Our study was a quality improvement project that showed that microbiology laboratories can use the weight of blood culture bottles to determine if appropriate volume has been collected to improve the diagnosis of BSI.

Keywords: Blood culture, Bloodstream infection, Diagnosis, Automated methods, Infection, Quality indicator

Background

The collection of blood cultures is crucial in the management of patients with suspected infection. It is the key piece of information in the etiologic diagnosis of septic shock, and for the choice of appropriate antimicrobial therapy [1, 2]. However, like any other laboratory test,

there may be false positive or false negative results [1, 3, 4].

Some studies indicate the importance of the volume of blood collected in blood cultures, since the greater the collected volume of blood, the greater the rate of positivity, and thus the greater the detection rate of bloodstream infection [4–13]. The American Society for Microbiology (ASM) and the College of American Pathologists (CAP) recommends a collection volume of 30–40 mL for the diagnosis of bloodstream infection. This recommendation is based on observations made over 30 years ago, before the existence of automated blood culture systems [5, 6]. Thus, this study aims to correlate the mass

*Correspondence: alexandre.marra@einstein.br

³ Division of Medical Practice, Hospital Israelita Albert Einstein, Av. Albert Einstein, 627/701, 1st floor, Room 108, Bloco A1, Morumbi, São Paulo 05651-901, Brazil

Full list of author information is available at the end of the article

contained in the blood vials with blood culture positivity and to verify the relationship between the mass of blood and blood volume collected for the diagnosis of blood-stream infection, as well as to explore factors predicting positive blood cultures.

Methods

This study was a prospective, observational study conducted from December 2011 to July 2012 in the adult Intensive Care Unit of a tertiary hospital in the city of São Paulo, SP, Brazil.

Patients over 18 years old with sepsis, severe sepsis or septic shock were included in the study. This was a quality improvement study that was approved by the Institutional Review Board (IRB) of Hospital Israelita Albert Einstein. The requirement for informed consent was waived by our IRB in accordance of the Code of Federal Regulations and the Privacy Rule.

Sepsis was defined as infection plus two or more of the following SIRS criteria: $T > 38$ or < 36 °C; $HR > 90$ /min; $RR > 20$ breaths/min (or $PaCO_2 < 32$ mmHg); or WBC count $> 12,000$ cells/ μ L or < 4000 cells/ μ L (or > 10 % band forms). Severe sepsis was defined as sepsis plus organ dysfunction, hypotension, or hypoperfusion abnormalities, including lactic acidosis, oliguria, or encephalopathy. Septic shock was defined as sepsis-induced hypotension (i.e., systolic BP < 90 mmHg or a drop of > 40 mmHg in the absence of other causes of hypotension) plus hypoperfusion abnormalities despite adequate fluid resuscitation [14]. Infections were classified as nosocomial if the patient was hospitalized more than 48 h when the culture was obtained [15].

If the bloodstream isolate was a potential skin contaminant (e.g., diphtheroids, *Propionibacterium* species, *Bacillus* species, coagulase-negative staphylococci, or micrococci), all of the following criteria were required for the diagnosis: the presence of an intravascular catheter, the initiation of targeted antimicrobial therapy, and at least one clinical finding (temperature > 38.0 or < 36 °C, chills, or systolic blood pressure of < 90 mmHg [16, 17]. A blood culture contaminant was defined as a usual skin organism that was isolated from only one set of blood cultures in a patient with no evidence of an infection due to that organism [1, 18].

The results of blood cultures and clinical data, including age, gender, comorbidities, diagnosis, hospitalization, presence of bacteremia, and in-hospital mortality were collected. Any changes in antimicrobial therapy based on final results of blood cultures were also recorded.

The normal body temperature is about 37.0 °C (98.6 °F), but varies with the time of day and the measuring method used. The American College of Critical Care Medicine and the Infectious Diseases Society of

America defines fever as an axillary body temperature above 38.3 °C (101 °F) [19]. Generally, in our hospital patients with an increase in body temperature to 37.8 °C have blood cultures collected per an automatic order in the patient chart. For many years, personnel have been trained to collect at least 10 mL for each blood culture bottle, to fill the bottle when possible, and to record the volume of blood obtained on the bottle.

Prior to use, blood culture bottles were weighed and then distributed for use in patients with suspected sepsis in the ICU, or in the emergency department for patients who were being admitted to the ICU. The mass in grams (g) of each vial was recorded on the bottle label. After blood collection was performed, the vials were sent to the microbiology laboratory, where they were weighed again and the weight recorded on the bottle label. The difference between the two measures corresponded to the blood mass collected.

Blood cultures were processed using BD BACTEC Plus Aerobic/F and Plus Anaerobic/F bottles and incubated in the BD BACTEC™ FX system for monitoring growth up to 5 days. Positive bottles were plated on CPS ID3 agar (bioMérieux), blood agar, and anaerinsol (Probac Brazil) for detection of aerobic and anaerobic bacteria. The identification of isolates was performed by manual and automated methods (XL Vitek, bioMérieux).

The microbiology laboratory has an alert system to notify physicians of patients with positive blood cultures and their gram stain results. Antimicrobial therapy was considered appropriate if the bacteria identified in the blood culture was susceptible to at least one of the antibiotics administered within 24 h after the collection of the culture. If the isolated microorganism was not susceptible by in vitro testing to the antibiotic used, the therapy was considered inadequate [20].

Finally, all the information was transcribed into a database, to correlate clinical data, blood mass, blood volume, positivity, and adequacy of antimicrobial therapy.

Statistical analysis

The relationship between fever and blood culture positivity was assessed by Fisher's exact test. Analysis of blood culture bottle factors and patient factors associated with positivity was performed by logistic regression models in simple and multiple approaches. The number of blood culture sets, total collected volume and total collected weight were not included simultaneously in the same model due to collinearity, so we adjusted three multiple models to evaluate their effects in the presence of confounders. Quality of adjustment was evaluated with Nagelkerke R Square. We used ROC curves to evaluate the predictive value of positive volume and weight. The area under the curve was estimated and accompanied by

the 95 % confidence level. The analyses were performed with SPSS (SPSS Inc. SPSS Statistics 2008 for Windows, Version 17.0 Chicago: SPSS Inc.) and the level of statistical significance was set at 5 %.

Results

We evaluated 345 patients with sepsis, severe sepsis or septic shock for whom blood culture bottles were collected for the diagnosis of bloodstream infection. Of these, 57 patients had blood cultures with growth of microorganisms, including 2 cases classified as contaminated and 55 cases of bloodstream infection. This resulted in a blood culture true positivity rate of 15.9 % (55/345).

Descriptive variables for the study population are shown in Table 1. The patients were predominantly male (62.6 %). The most common admission diagnoses were sepsis/septic shock/other shock states (45.2 %), followed by respiratory failure (20.9 %), neurologic disorders

Table 1 Characteristics of the 345 septic patients with blood cultures obtained

	N	%
Male gender	216	62.6
Positive blood culture	55	15.9
Admission diagnosis		
Sepsis/septic shock/other shock state	156	45.2
Respiratory failure	72	20.9
Polytrauma	3	0.9
Neurologic disorders	52	15.1
Solid organ transplantation	22	6.4
Others	40	11.6
Number of comorbidities		
0	19	5.5
1	49	14.2
2	91	26.4
≥3	186	53.9
Number of collected blood culture sets		
1	80	23.2
2	92	26.7
3	78	22.6
4	33	9.6
≥5 ^a	62	18.1
T ≥ 37.8 °C at time of collection	100	29.0
Source of the blood culture ^b		
Through a central venous catheter	12	3.5
Through a peripherally vein	185	54.6
Through a central venous catheter and peripherally vein	142	41.9
In-hospital mortality	46	13.3

^a One case with 23 sets of blood culture

^b There were 6 cases with no collection source identified

(15.1 %), and solid organ transplantation (6.4 %). A majority of the patients (53.9 %) had 3 or more comorbidities. The in-hospital mortality was 13.3 %.

The number of blood cultures collected per patient ranged from 1 to 10, totaling 599 samples. Most patients had two blood culture sets (aerobic + anaerobic bottles) submitted (26.7 %). Twenty-three percent of patients (23.2 %) had one set, 22.6 % had 3 sets, 9.6 % had 4 sets, and 18.1 % had more than 5 sets (Table 1). Only 29.0 % had a temperature >37.8 °C at the time the blood cultures were collected. Blood culture bottles were more likely to have the initial weight recorded than the blood volume collected (91.6 % vs. 80.1 %, $p < 0.001$). Cultures were most commonly obtained via peripheral venipuncture (54.6 %); in 41.9 % cultures were obtained via peripheral venipuncture and through an existing central line, and in 3.5 % cultures were obtained only through an existing central line.

Table 2 shows that of the 55 patients with bloodstream infection, 40.0 % had peripheral blood culture collection only and 60.0 % had peripheral blood culture and central blood culture collection. There was a change in antibiotic therapy after the antibiogram became available in 12.7 %, and in 70.9 % of patients antimicrobial treatment was deemed appropriate. Bloodstream infections were classified as nosocomial in 34.5 %.

Among the patients studied, 87.3 % had monomicrobial infection and 12.7 % had polymicrobial infection (Table 3). Gram-positive bacteria were found in 43.6 % of patients, gram-negative bacteria in 36.4 %, and fungal infections in 7.3 %.

Univariate analysis revealed that significant predictors of positive blood cultures were obtaining more than one set of blood cultures (OR: 1.28; CI 95 % 1.16–1.42; $p < 0.001$), body temperature (≥ 39.0 °C) (OR: 4.47; CI 95 % 1.16–17.21; $p = 0.029$), collected volume (OR: 1.02; CI 95 % 1.01–1.03; $p < 0.001$), and collected weight (OR:

Table 2 Characteristics of the 55 patients with bloodstream infection

	N	%
Nosocomial infection	19	34.5
Change in treatment decision after gram stain reported	2	3.6
Change in treatment decision after antibiogram reported	7	12.7
Adequate antimicrobial treatment	39	70.9
Inadequate antimicrobial treatment	16	29.1
Blood culture collected via peripheral vein only	22	40.0
Blood culture collected via peripheral vein + central venous catheter	33	60.0
Monomicrobial infection	48	87.3
Polymicrobial infection	7	12.7

Table 3 Description of the microorganisms

	N = 55	%
Monomicrobial infection	48	87.3
Gram positive	24	50.0
<i>Staphylococcus epidermidis</i>	12	50.0
<i>Staphylococcus hominis</i>	4	16.7
<i>Staphylococcus haemolyticus</i>	2	8.3
<i>Staphylococcus aureus</i>	1	4.2
<i>Staphylococcus capitis</i>	1	4.2
<i>Staphylococcus sciuri</i>	1	4.2
<i>Streptococcus agalactiae</i>	1	4.2
<i>Clostridium difficile</i>	1	4.2
Identified as gram positive bacteria only	1	4.2
Gram negative	20	41.7
<i>Escherichia coli</i>	7	35.0
<i>Klebsiella pneumoniae</i>	4	20.0
<i>Pseudomonas aeruginosa</i>	4	20.0
<i>Neisseria meningitidis</i>	2	10.0
<i>Salmonella species</i>	2	10.0
<i>Serratia marcescens</i>	1	5.0
Fungi	4	8.3
<i>Candida albicans</i>	1	25.0
<i>Candida glabrata</i>	1	25.0
<i>Candida krusei</i>	1	25.0
<i>Cryptococcus neoformans</i>	1	25.0
Polymicrobial infection	7	12.7
<i>Klebsiella pneumoniae</i> + <i>Staphylococcus hominis</i>	1	14.3
<i>Candida albicans</i> + <i>Klebsiella pneumoniae</i>	1	14.3
<i>Candida albicans</i> + <i>Candida tropicalis</i>	1	14.3
<i>Enterococcus faecalis</i> + <i>Staphylococcus epidermidis</i>	1	14.3
<i>Klebsiella pneumoniae</i> + <i>Pseudomonas aeruginosa</i>	1	14.3
<i>Pseudomonas aeruginosa</i> + <i>Staphylococcus xylosum</i>	1	14.3
<i>Staphylococcus epidermidis</i> + <i>Escherichia coli</i>	1	14.3

1.02; CI 95 % 1.01–1.03; $p < 0.001$) (Table 4). In the multivariate model, which adjusted for age, gender, number of comorbidities, admission diagnosis and temperature $>39^{\circ}\text{C}$, the blood culture mass (in grams) remained a significant predictor of positivity, with an odds ratio 1.01 (i.e., for each additional 1 mL of blood collected there was a 1 % increase in positivity; 95 % CI 1.01–1.02, $p = 0.001$; Nagelkerke R Square [R^2] = 0.192). For blood volume collected, the adjusted odds ratio was estimated at 1.02 (95 % CI: 1.01–1.03, $p < 0.001$; $R^2 = 0.199$). For each set of collected blood cultures beyond one set, the adjusted odds ratio was estimated to be 1.27 (95 % CI: 1.14–1.41, $p < 0.001$; $R^2 = 0.221$).

There is strong evidence of a relationship between the total collected volume or total weight and positivity of blood cultures when analyzed per patient as seen in Fig. 1.

Discussion

Blood cultures remain an important laboratory test in patients with systemic inflammatory response syndrome. The number of blood cultures collected in this study ranged from 1 pair to 23 sets, always including an aerobic and an anaerobic bottle. However, more recent studies recommend collecting at least 2 and at most 4 sets of blood culture per infectious episode. Collection of more than three samples may delay initiation of empiric antimicrobial therapy [5, 6].

Collection of blood cultures from peripheral veins is preferred. Of the 55 patients with positive blood cultures, 60 % had blood cultures obtained via peripheral vein and from a central venous catheter at same time. The rate of blood culture contamination is approximately 10 % higher when blood is collected from an indwelling catheter [1, 5, 6].

Contamination of blood cultures is a relatively common occurrence in clinical practice. Of the 57 patients with positive blood cultures, 2 were determined to have contaminated cultures. Published criteria can help to identify contaminated cultures, such as the number collected and number positive, the identity of the microorganism, the time to positivity, the evolution of clinical signs and laboratory data, as well as information from automated methods [1, 5, 6].

The volume of blood is an important variable since the larger the volume of blood obtained, the greater the positivity rate. The appropriate volume of blood depends on the recommendation of the manufacturer and the system used by each health institution, however the recommendation of recent studies and surveys is 10 mL per bottle [5, 6, 13].

Although the volume of collected blood is the most important factor for the positivity of blood cultures [5, 6] and appropriate collection volumes can improve the diagnosis of bloodstream infection, it is difficult to ascertain that an adequate volume is collected in each bottle. Therefore, we decided to determine the weight of the collected blood for the diagnosis of bloodstream infection. To weigh pre- and post-blood culture is a somewhat laborious procedure, but it was considered more reliable. It was necessary to weigh prior to blood culture collection because we observed that the blood culture bottles had different weights. We proved that this variable can be used as a quality indicator for the microbiology laboratory because it is easier to measure than the exact volume collected in each bottle. Ultimately, improving the diagnosis of bloodstream infection contributes to appropriate antimicrobial therapy [21].

Currently, the indiscriminate use of antibiotics is causing microorganisms to become increasingly resistant to many agents, creating a serious worldwide problem

Table 4 Univariate analysis of factors predicting positive blood cultures

	Positivity, n (%)		OR	CI 95 %	P
	No	Yes			
Gender					
Female	118 (91.5)	11 (8.5)			
Male	172 (79.6)	44 (20.4)	2.74	1.36–5.53	0.005
Diagnosis on admission					
Sepsis/septic shock/other shock states	123 (78.8)	33 (21.2)			0.063
Respiratory failure	68 (94.4)	4 (5.6)	0.22	0.08–0.65	0.006
Neurologic disorders	46 (88.5)	6 (11.5)	0.49	0.19–1.24	0.130
Solid organ transplantation	18 (81.8)	4 (18.2)	0.83	0.26–2.62	0.748
Others	35 (81.8)	8 (18.6)	0.85	0.36–2.01	0.715
Median age (in years) ^a	68 (52–82)	68 (56–78)	1.00	0.98–1.01	0.884
Number of comorbidities ^a	3 (2–4)	3 (2–4)	1.00	0.82–1.22	0.972
Number of blood cultures pairs ^a	2 (1–3)	3 (2–7)	1.28	1.16–1.42	<0.001
Mean body temperature (°C) at time of collection ^a	36.7 (36.1–37.3)	37.0 (36.0–37.6)	1.20	0.90–1.62	0.220
Body temperature ≥ 37.8 °C at time of collection					
No	212 (86.5)	33 (13.5)			
Yes	78 (78.0)	22 (22.0)	1.81	1.00–3.30	0.052
Body temperature ≥ 39.0 °C at time of collection					
No	285 (84.8)	51 (15.2)			
Yes	5 (55.6)	4 (44.4)	4.47	1.16–17.21	0.029
Collected median volume (mL) ^a	35 (20–52)	56 (34–95)	1.02	1.01–1.03	<0.001
Collected median weight (g) ^a	35 (21–53)	54 (32–82)	1.02	1.01–1.02	<0.001

Italic values indicate statistically significant associations

^a Data described by median and interquartile range (first quartile–third quartile)

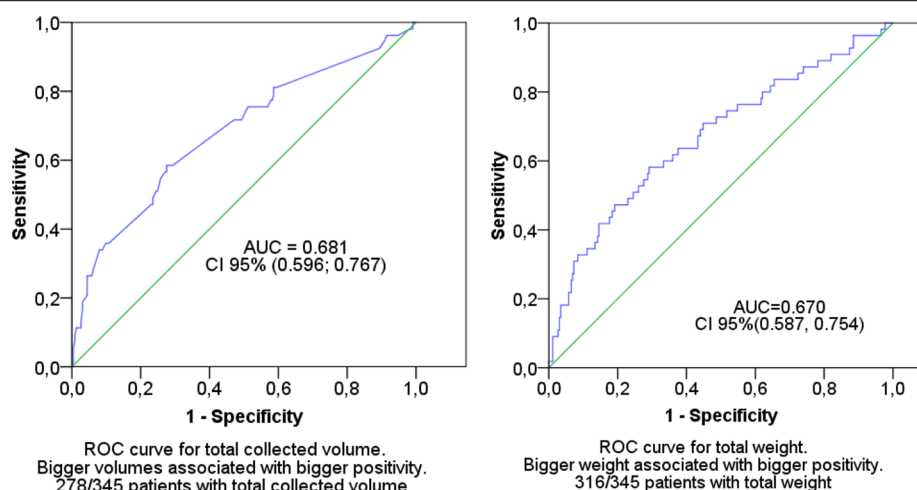


Fig. 1 Relationship between total collected blood volume or total weight and positivity of blood cultures. On the *left* ROC curve for total collected volume; on the *right* ROC curve for total weight. There is evidence between the total collected volume or total weight and positivity of blood cultures when analysed per patient

[22, 23]. Patients who receive initial inappropriate antibiotics but then are adjusted when susceptibility testing becomes available also have improved outcomes. Adjusting therapy can decrease the antimicrobial spectrum and

reduce the appearance of resistant microorganisms [23]. A high proportion of the patients in our study received appropriate antimicrobial therapy (more than 70 %). One possible explanation is that the microbiology laboratory

notifies the physicians of patients with positive blood cultures and their gram stain results 24 h per day. Except for temperatures $>37.8^{\circ}\text{C}$, the elevated body temperatures were not associated with blood culture positivity, but for temperatures higher than 39°C there was a statistically significant difference in blood culture positivity; however, the small number of cases do not permit of us to make any other conclusions.

Our study has some limitations. First, this study was performed at a single medical center so it may not be generalizable to all hospitals. Second, we limited our analysis of adequate antimicrobial therapy only to patients with confirmed bloodstream infections (positive blood cultures). We did not analyze adequate antimicrobial therapy for the patients with suspected infection and negative blood cultures.

Conclusions

In conclusion, our study was a quality improvement project that showed that microbiology laboratories can use the weight of blood culture bottles to determine if appropriate volume has been collected to improve the diagnosis of bloodstream infection. Since volume and weight are correlated, measuring weight is a way to follow the recommendations of the College of American Pathologists.

Abbreviations

ICU: Intensive Care Unit; BSI: bloodstream infection; ASM: American Society for Microbiology; CAP: College of American Pathologists; IRB: Institutional Review Board.

Authors' contributions

LN, ARM, TZSC, MCS, FZ, PCS, NAM, ESV participated in the data collected and data analysis. LN, ARM, JP, OFPS, MBE and MDVM participated in the design and coordination. LN, ARM, TZSC, ESV, JP, MBE, MDVM helped to draft the manuscript and to provide critical review of the manuscript. All authors read and approved the final manuscript.

Author details

¹ Intensive Care Unit, Hospital Israelita Albert Einstein, São Paulo, Brazil.

² Instituto Israelita de Ensino e Pesquisa Albert Einstein, São Paulo, Brazil. ³ Division of Medical Practice, Hospital Israelita Albert Einstein, Av. Albert Einstein, 627/701, 1st floor, Room 108, Bloco A1, Morumbi, São Paulo 05651-901, Brazil.

⁴ Department of Microbiology, Hospital Israelita Albert Einstein, São Paulo, Brazil. ⁵ Department of Internal Medicine, Virginia Commonwealth University School of Medicine, Richmond, VA, USA.

Acknowledgements

We gratefully acknowledge all ICU and Emergency Department HCWs from Hospital Israelita Albert Einstein.

Compliance with ethical guidelines

Competing interests

The authors declare that they have no competing interests. This work did not receive any kind of financial support.

Received: 30 October 2014 Accepted: 18 August 2015

Published online: 28 August 2015

References

- Hall KK, Lyman JA. Updated review of blood culture contamination. *Clin Microbiol Rev.* 2006;19:788–802.
- Bryan CS. Clinical implications of positive blood cultures. *Clin Microbiol Rev.* 1989;2:329–53.
- Kenner T. The measurement of blood density and its meaning. *Basic Res Cardiol.* 1989;89:111–24.
- Connell TG, Rele M, Cowley D, Buttery JP, Curtis N. How reliable is a negative blood culture result? Volume of blood submitted for culture in routine practice in a children's hospital. *Pediatrics.* 2007;119:891–6.
- Bouza E, Sousa D, Rodríguez-Créixems M, Lechuz JG, Muñoz P. Is the volume of blood cultured still a significant factor in the diagnosis of bloodstream infections? *J Clin Microbiol.* 2007;45:2765–9.
- Araújo MRE. Hemocultura: recomendações de coleta, processamento e interpretações de resultados. *J Infect Control.* 2012;1:8–19.
- Mermel L, Maki D. Detection of bacteremia in adults: consequences of culturing an inadequate volume of blood. *Ann Intern Med.* 1993;19:270–2.
- Hall MM, Ilstrup DM, Washington JA. Effect of volume of blood cultured on detection of bacteremia. *J Clin Microbiol.* 1976;3:643–5.
- Ilstrup DM, Washington JA. The importance of volume of blood cultured in the detection of bacteremia and fungemia. *Diagn Microbiol Infect Dis.* 1983;1:107–10.
- Li J, Plorde JJ, Carlson LG. Effects of volume and periodicity on blood cultures. *J Clin Microbiol.* 1994;32:2829–31.
- Airp M, Bentzon MW, Jensen J, Frederiksen W. The importance of blood volume cultured on detection of bacteraemia. *Eur J Clin Microbiol Infect Dis.* 1989;8:838–42.
- Tenney JH, Reller LB, Mirrett S, Wang WL, Weinstein MP. Controlled evaluation of the volume of blood cultured in detection of bacteremia and fungemia. *J Clin Microbiol.* 1982;15:558–61.
- Dellinger RP, Levy MM, Rhodes A, Annane D, Gerlach H, Opal SM, Sevransky JE, Sprung CL, Douglas IS, Jaeschke R, Osborn TM, Nunnally ME, Townsend SR, Reinhart K, Kleinpell RM, Angus DC, Deutschman CS, Machado FR, Rubenfeld GD, Webb SA, Beale RJ, Vincent JL, Moreno R, Surviving Sepsis Campaign Guidelines Committee including the Pediatric Subgroup. Surviving sepsis campaign: international guidelines for management of severe sepsis and septic shock: 2012. *Crit Care Med.* 2013;41:580–637.
- Bone RC, Balk RA, Cerra FB, Dellinger RP, Fein AM, Knaus WA, Schein RM, Sibbald WJ. Definitions for sepsis and organ failure and guidelines for the use of innovative therapies in sepsis. The ACCP/SCCM Consensus Conference Committee. American College of Chest Physicians/Society of Critical Care Medicine. *Chest.* 1992;101:1644–55.
- Horan TC, Andrus M, Dudeck MA. CDC/NHSN surveillance definition of health care-associated infection and criteria for specific types of infections in the acute care setting. *Am J Infect Control.* 2008;36:309–32.
- Wisplinghoff H, Bischoff T, Tallent SM, Seifert H, Wenzel RP, Edmond MB. Nosocomial bloodstream infections in US hospitals: analysis of 24,179 cases from a prospective nationwide surveillance study. *Clin Infect Dis.* 2004;39:309–17.
- Marra AR, Camargo LF, Pignatari AC, Sukiennik T, Behar PR, Medeiros EA, Ribeiro J, Girão E, Correa L, Guerra C, Brites C, Pereira CA, Carneiro I, Reis M, de Souza MA, Tranchesi R, Barata CU, Edmond MB, Brazilian SCOPE Study Group. Nosocomial bloodstream infections in Brazilian hospitals: analysis of 2,563 cases from a prospective nationwide surveillance study. *J Clin Microbiol.* 2011;49:1866–71.
- Madeo M, Jackson T, Williams C. Simple measures to reduce the rate of contamination of blood cultures in accident and emergency. *Emerg Med J.* 2005;22:810–1.
- O'Grady NP, Barie PS, Bartlett JG, Bleck T, Carroll K, Kalil AC, Linden P, Maki DG, Nierman D, Pasculle W, Masur H, American College of Critical Care Medicine, Infectious Diseases Society of America. Guidelines for evaluation of new fever in critically ill adult patients: 2008 update from the American College of Critical Care Medicine and the Infectious Diseases Society of America. *Crit Care Med.* 2008;36:1330–49.
- Ibrahim EH, Sherman G, Ward S, Fraser VJ, Kollef M. The influence of inadequate antimicrobial treatment of bloodstream infections on patient outcomes in the ICU setting. *Chest.* 2000;118:146–55.

21. Zaragoza R, Artero A, Camarena JJ, Sancho S, Gonzales R, Nogueira JM. The influence of inadequate empirical antimicrobial treatment on patients with bloodstream infections in an intensive care unit. *Clin Microbiol Infect*. 2003;9:412–8.
22. Rice LB. Federal funding for the study of antimicrobial resistance in nosocomial pathogens: no ESKAPE. *J Infect Dis*. 2008;197:1079–81.
23. Boucher HW, Talbot GH, Bradley JS, Edward JE Jr, Gilbert D, Rice LB, Scheld M, Spellberg B, Bartlett J. Bad bugs, no drugs: no ESKAPE! An update from the infectious diseases society of America. *Clin Infect Dis*. 2009;48:1–12.

Submit your next manuscript to BioMed Central and take full advantage of:

- Convenient online submission
- Thorough peer review
- No space constraints or color figure charges
- Immediate publication on acceptance
- Inclusion in PubMed, CAS, Scopus and Google Scholar
- Research which is freely available for redistribution

Submit your manuscript at
www.biomedcentral.com/submit

