

NOT TO BE REMOVED FROM LIBRARY



1939

CX
7113173
yuo

For Reference

Not to be taken from this room

VCC LIBRARY

LIBRARY
COLLEGE OF WILLIAM AND MARY
DIVISION

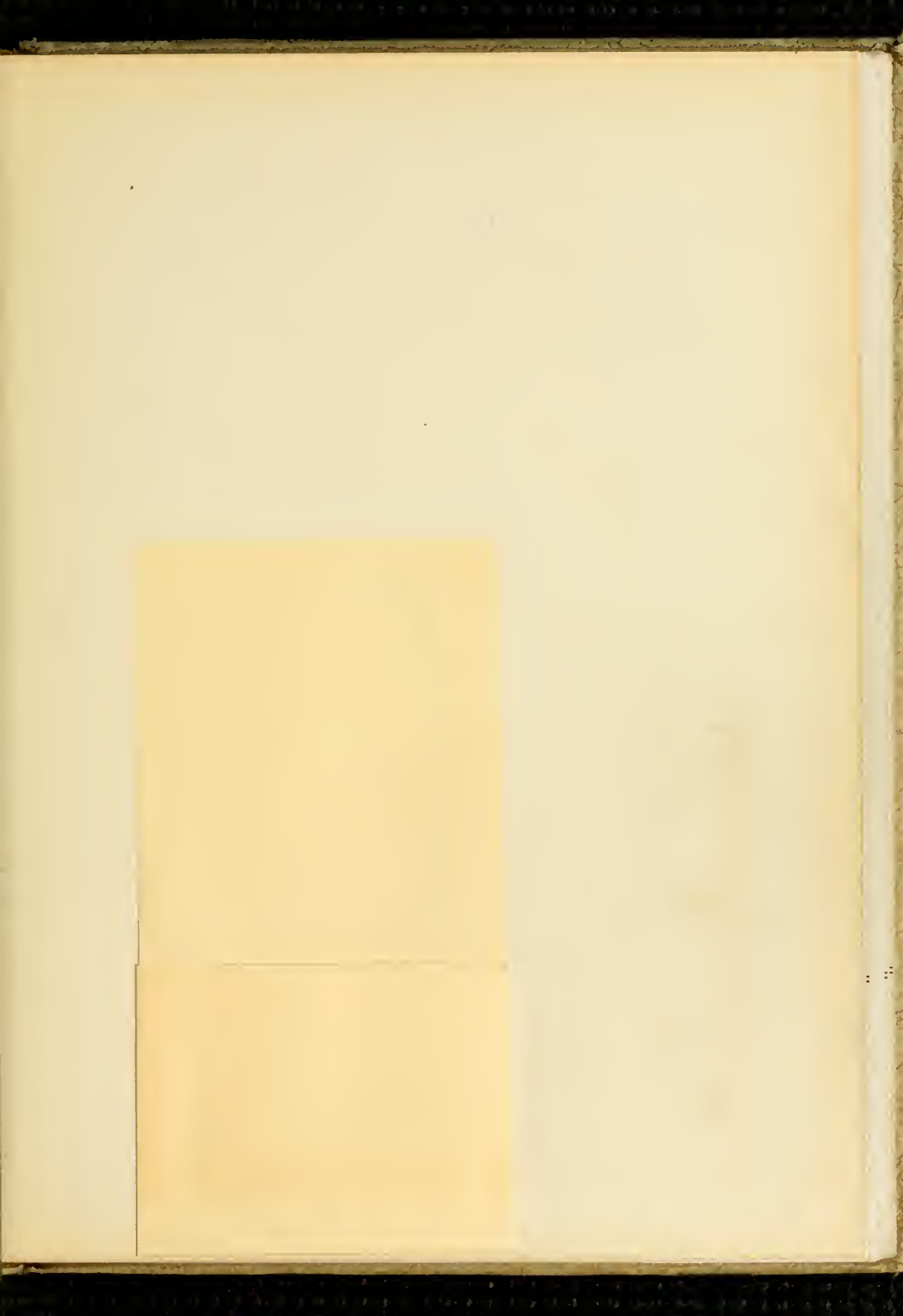
Library
 RICHMOND PROFESSIONAL INSTITUTE
 of the
 COLLEGE OF WILLIAM AND MARY
 901 West Franklin Street
 Richmond, Va.

378.755
 R414y
 1939

Number.....
 Copy 2.....

©

C.7



LIBRARY
COLLEGE OF WILLIAM AND MARY
RICHMOND DIVISION

Ref.
378.755
R414Y
1939
c. 2

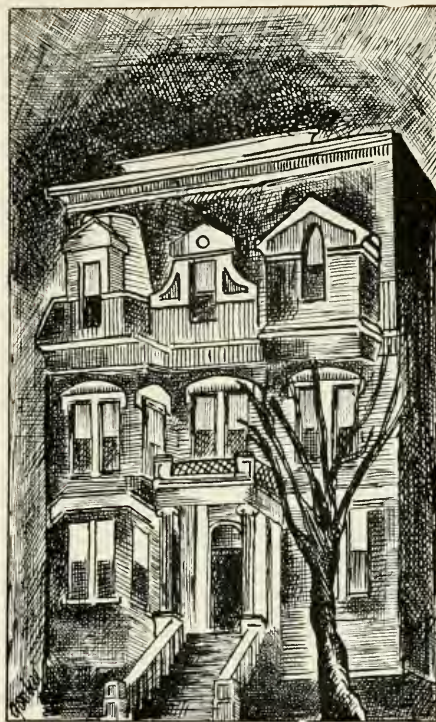


+ T H E

PUBLISHED BY THE STUDENTS OF THE
RICHMOND PROFESSIONAL INSTITUTE
COLLEGE OF WILLIAM AND MARY
IN VIRGINIA

KATHERINE MARKS, EDITOR
ELIZABETH BROWN, BUSINESS MANAGER

1939



W I G W A M +

F O R E W O R D

+

IN THIS VOLUME THE EDITORS HAVE TRIED TO RECORD THE EVENTS OF THE PAST YEAR; PLEASANT MEMORIES; LASTING FRIENDSHIPS; STUDENT ACTIVITIES; THE INFORMALITY AND EXUBERANCE OF YOUTH TEMPERED BY A CURRENT OF SERIOUS THOUGHT. IF IN LATER YEARS, AMID CARES AND RESPONSIBILITIES, WE CAN TURN THESE PAGES AND LIVE ONCE AGAIN OUR COLLEGE DAYS AND CAPTURE FOR A MOMENT THE YOUTH THAT WAS OURS, THE EDITORS WILL CONSIDER THEIR EFFORTS WORTHWHILE. THE THRILL OF CREATION HAS BEEN OURS; THE RESULT, THIS WIGWAM, IS YOURS; MAY IT BE A STOREHOUSE OF PLEASANT MEMORIES.



C O N T E N T S

BOOK I. THE COLLEGE
BOOK II. ACTIVITIES
BOOK III. ATHLETICS
BOOK IV. FEATURES



The spirit we earnestly endeavor to have these pages reflect is the spirit of foresight and determination embodied in our dean, who for a quarter of a century has unselfishly devoted himself to the Richmond Professional Institute, College of William and Mary. To him we respectfully dedicate this volume

DR. HENRY H. HIBBS, JR.

D E D I C A T



DR. HENRY H. HIBBS, JR.

I O N +





C O L L E G E +





DEAN'S HOUSE

GYMNASIUM



FACULTY



LOIS MCGREGOR
B.S.
Sociology

LOIS ROBERTS
B.S.
Physical Education



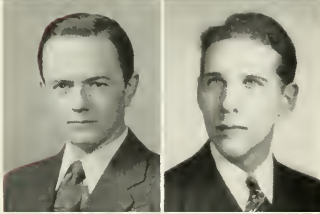
WESLEY WALKER
Advertising Design
Art Structure

MARGARET JOHNSON
A.B., M.A., Ph.D.
Italian and French



OLIVE STONE
A.B., M.A.
Sociology

HELEN M. MASON
A.B., M.S.
Social Work



MARION M. JUNKIN
B.A.
Anatomy, Art, History
Etching, Lithography,
and Sculpture

WILLIAM F. HAVILAND
Interior Decoration



LOUISE BERNARD
Store Service
Department

ANNA MAE JOHNSTON
B.A., M.A.
Store Service
Department

FACULTY

BOYCE LOVING

A.B., M.A.

English



ALICE WHITESIDE JORG

B.L.I.

*Dramatics and
Public Speaking*

HELEN F. RHODES

Artist's Diploma

Voice



MITZIE P. COX

B.S., B.A.

Piano

THERSA POLLOCK

B.S.

Life Class



EMERAL BRISTOW

A.B.

Interior Decoration

FRANCES MONTGOMERY

A.B., M.A.

Public Health Nursing



SAMUEL JESSIE MCCOY

A.B., M.A., Ph.D.

English

HOWARD H. DAVIS

A.B., M.A., Ph.D.

Economics and Government



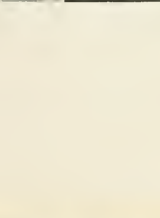
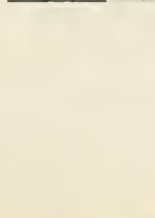
EVA BOND

B.S., M.S., Ph.D.

Psychology

HAZEL PETTI'S MUNDY

*Costume Design and
Fashion Illustration*



LEADERS OF THE CLASS OF 1939

*"Every noble life leaves the fiber of it interwoven
forever in the work of the world."*—RUSKIN.



These students were chosen by the Student Council, the Inter-Club Council, and the Senior Class as the outstanding leaders of the Class of 1939.

LUCILLE ANDERSON
LOUISE EISEN
LOUISE MARABLE

ELSIE BLANK
PHYLLIS JASKAUSKAS
KATHERINE MARKS

ELIZABETH BROWN
EDITH MANN
RACHEL RAYMER



HAVENS, ROPER, DURHAM, MANN

SENIOR CLASS

OFFICERS

EDITH MANN

President

DORIS ROPER

Vice-President

PHYLLIS HAVENS

Secretary

ELIZABETH DURHAM

Treasurer



SENIOR
CLASS

KATHERINE LUCILLE ANDERSON

RICHMOND, VIRGINIA

B.S. in Medical Technology

President, Freshman Class, 1935-36; Varsity Hockey, 1935-37; Varsity Basketball, 1935-37; President, Sophomore Class, 1936-37; Treasurer, Student Government Council, 1936-37; Barnstormers, 1936-38; Atlas Club, 1937-39; Vice-President, Atlas Club, 1937-38; Cotillion Club, 1937-39; Treasurer, Junior Class, 1937-38; Secretary, Student Government Council, 1937-38; Business Manager, WIGWAM, 1937-38; Certificate in Laboratory Technic, Medical College of Virginia, 1939.

FRANCES VIRGINIA BEAR

STAUNTON, VIRGINIA

Bachelor of Fine Arts

Cotillion Club, 1936-39; Freshman Representative, House Council, 1936; Sophomore Representative, House Council, 1937; American Students Union, 1937; Vice-President, Art Students' League, 1939.

ESTELLE McNAUGHTON BALLOU

RICHMOND, VIRGINIA

B.S. in Nursing

ROSE ANN BICHI

RICHMOND, VIRGINIA

B.S. in Medical Technology

Hockey Squad, 1935-37.

SENIOR
CLASS



ELSIE BLANK

NEW YORK CITY, NEW YORK

B.S. in Sociology

Transfer from Virginia Interment College, Bristol, Va.

Glee Club, 1938-39; President, Glee Club, 1938; Luella Townley Literary Society, 1938-39; Vice-President, Luella Townley Literary Society, 1939; American Student Union, 1938-39; Vice-President, American Student Union, 1938; *Atlas* Paper Staff, 1938-39; Associate Editor, *Atlas* Paper, 1939; Atlas Club, 1938-39; Treasurer, Atlas Club, 1938-39; Who's Who, 1939; May Queen, 1939.

SELMA RUTH BLOOM

NORTH EMPORIA, VIRGINIA

B.S. in Sociology

Transfer from the College of William and Mary, Williamsburg, Va.

Dorian Society, 1936-38; Treasurer, Dorian Society, 1937-38; Cotillion Club, 1938-39.

BESSIE LOU BRAY

MT. AIRY, NORTH CAROLINA

Bachelor of Fine Arts

Transfer from Salem College.

Art Students' League, 1937-39; Cotillion Club, 1937-39.

ELLEN BRENNER

RICHMOND, VIRGINIA

B.S. in Sociology

Basketball, 1936; Psychology Club, 1937-38; Dramatic Club, 1937-38.



SENIOR
CLASS

ANNE ELIZABETH BROWN

RICHMOND, VIRGINIA

B.S. in Sociology

Treasurer, Cotillion Club, 1936-38; Sophomore Representative, May Court, 1937; Sophomore Representative, Student Government Council, 1937; President, Junior Class, 1937-38; Advertising Manager, WIGWAM, 1937-38; Basketball Manager, 1937-38; Who's Who, 1937-38; President, Cotillion Club, 1938-39; Business Manager, WIGWAM, 1938-39; Vice-President, Student Government Council, 1938-39; Vice-President, Inter-Club Council, 1939.

AVA CHARLES BURKE

HAMPTON, VIRGINIA

Bachelor of Fine Arts

Transfer from the College of William and Mary, Williamsburg, Va.

Art Students' League, 1938-39.

FOY MAE BULLUCK

ROCKY MOUNT, NORTH CAROLINA

B.S. in Sociology

Transfer from Converse College
Cotillion Club, 1937-38.

MARY CATHERINE CARPENTER

RICHMOND, VIRGINIA

B.S. in Sociology

Transfer from Hollins College, Roanoke, Va.
Basketball, 1937-38; Cotillion Club, 1937-39.

SENIOR CLASS



ANNIE PAGE CRAFTORD

LEE HALL, VIRGINIA

B.S. in Sociology

Transfer from the College of William and Mary,
Williamsburg, Va.

Cotillion Club, 1937-38; Barnstormers, 1938.

MARGARET MARY CROWE

NEW BRITAIN, CONNECTICUT

B.S. in Sociology

Transfer from Teachers' College, Connecticut.
Vice-President, House Council, 1937-38; Cotillion
Club, 1937-39; Who's Who, 1938; President,
House Council, 1938-39; *Atlas* Paper Reporter,
1938-39; Representative Student Government
Council, 1938-39.

MARY ELIZABETH DURHAM

RICHMOND, VIRGINIA

B.S. in Sociology

May Court Representative, 1936; Cotillion Club,
1937-39; Barnstormers, 1937-39; May Court Rep-
resentative, 1938 and 1939; Feature Editor,
Atlas Paper, 1938-39; Treasurer, Senior Class,
1938-39.

MARGARET MADDOX EDWARDS

RICHMOND, VIRGINIA

B.S. in Sociology



SENIOR
CLASS

LOUISE EISEN

NEW YORK CITY, NEW YORK

B.S. in Sociology

American Student Union, 1936-39; Luella Townley Literary Society, 1936-39; Barnstormers, 1936; Freshman Representative, House Council, 1936-37; Psychology Club, 1937-38; Atlas Club, 1937-39; Circulation Manager, WIGWAM, 1937-38; Sophomore Representative, House Council, 1937-38; Associate Editor, WIGWAM, 1938-39; Senior Representative, House Council, 1938-39; President, American Student Union, 1938-39; President, Atlas Club, 1938-39.

RUTH ELIZABETH ENNIS

PHILADELPHIA, PENNSYLVANIA

B.S. in Sociology

Transfer from Keuka College.
Cotillion Club, 1937-38.

EVELYN ALEAS GOYNE

CHESLER, VIRGINIA

B.S. in Sociology

Transfer from the College of William and Mary,
Williamsburg, Va.

Luella Townley Literary Society, 1937-38; Glee Club, 1937-38; President, Luella Townley Literary Society, 1938-39; Junior Representative, May Court, 1938; Vice-President, Glee Club, 1938-39; Luella Townley Literary Society Representative, Inter-Club Council, 1939.

SARAH FRANCES FLIPPEN

CARTERSVILLE, VIRGINIA

B.S. in Nursing

SENIOR CLASS



BETTY HOWLE GWALTNEY

RICHMOND, VIRGINIA

B.S. in Sociology

Hockey Squad, 1935-36; Basketball Squad, 1935-38; Hockey Manager, 1936-37; Varsity Hockey, 1936-39; Cotillion Club, 1937-38; Barnstormers, 1937-39; Sports Editor, *Atlas* Paper, 1937-38; Associate Editor, *Atlas* Paper, 1938-39; Varsity Basketball, 1938-39; *Atlas* Paper Representative, Inter-Club Council, 1939.

PHYLLIS MARGUERITE HAVENS

RICHMOND, VIRGINIA

B.S. in Medical Technology

Basketball, 1935-37; Hockey Squad, 1935-37; Cotillion Club, 1936-38; Varsity Hockey, 1938-39; Secretary, Senior Class, 1938-39.

PHYLLIS LORETTA JASKAUSKAS

BINGHAMTON, NEW YORK

B.S. in Sociology

Transfer from Victor the Great University, Kaunas, Lithuania.
Barnstormers, 1935-37; Reporter, *Atlas* Paper, 1936-37; Louella Fownley Literary Society, 1937-39; Psychology Club, 1937; Co-Editor, *Atlas* Paper, 1937-38; Atlas Club, 1938-39; Cotillion Club, 1938-39; Editor, *Atlas* Paper, 1938-39; Who's Who, 1939.

CLARA HIRSOHN

RICHMOND, VIRGINIA

B.S. in Sociology

Barnstormers, 1936; American Student Union, 1936-39; Luella Townley Literary Society, 1936-39.



SENIOR
CLASS

PEGGY LOUISE LAYMAN

ROANOKE, VIRGINIA

Bachelor of Fine Arts

Transfer from the College of William and Mary,
Williamsburg, Va.

Art Students' League, 1937-39; Cotillion Club,
1937-39; Art Students' League Representative,
Inter-Club Council, 1939.

MARGARET JANE MACLEOD

TORONTO, CANADA

B.S. in Nursing

EDITH MANN

SAVANNAH, GEORGIA

Bachelor of Fine Arts

Art Students' League, 1935-39; Cotillion Club,
1935-39; Vice-President, Freshman Class, 1935-
36; Freshman Representative, May Court, 1935;
Secretary, Sophomore Class, 1936-37; Barnstorm-
ers, 1936-37; Sophomore Representative, Student
Council, 1936-37; President, Art Students'
League, 1937-38; Who's Who, 1938; President,
Senior Class, 1938-39; Atlas Club, 1938-39; Vice-
President, Cotillion Club, 1938-39; Secretary,
Atlas Club, 1938-39; Who's Who, 1939; Secre-
tary, Inter-Club Council, 1939.

ANNE LOUISE MARABLE

RICHMOND, VIRGINIA

B.S. in Sociology

Hockey Squad, 1935-38; Basketball Squad, 1936-
39; Cotillion Club, 1936-39; Dorian Society,
1936-38; President, Dorian Society, 1937-38;
Vice-President, Junior Class, 1937-38; Vice-
President, Athletic Association, 1937-38; Junior
Representative, Student Government Council,
1937-38; Varsity Hockey, 1937-38; Atlas Club,
1937-39; Treasurer, Atlas Club, 1937-38; Vice-
President, Atlas Club, 1938-39; President, Stu-
dent Government Council, 1938-39; President,
Inter-Club Council, 1939.

SENIOR
CLASS



GEORGIE KATHERINE MARKS

RICHMOND, VIRGINIA

B.S. in Retailing

Circulation Manager, *Atlas Paper*, 1935-36; Advertising Manager, *Atlas Paper*, 1936-37; Business Manager, *Atlas Paper*, 1937-38; Photographic Editor, *WIGWAM*, 1937-38; Barnstormers, 1937-38; Business Manager, *Atlas Paper*, 1938-39; Editor, *WIGWAM*, 1938-39; *WIGWAM* Representative, Inter-Club Council, 1939.

MARY ELIZABETH MOTLEY

RICHMOND, VIRGINIA

B.S. in Medical Technology

Atlas Paper Staff, 1935-39; Hockey, 1935-36; Basketball, 1935-36; Cotillion Club, 1936-37; Junior Representative, Student Government Council, 1937-38; Certificate in Laboratory Technic, Medical College of Virginia, 1939.

DOROTHY K. NEIL

NEWTON, MASSACHUSETTS

B.S. in Nursing

Chairman, Graduate Student Government Council.

JANET PATTON

HARTWOOD, VIRGINIA

B.S. in Nursing

Johnson Willis Hospital.



SENIOR
CLASS

LOUISE PECK
RICHMOND, VIRGINIA
Bachelor of Fine Arts

WILLIE ELIZABETH PERKINS
RICHMOND, VIRGINIA
B.S. in Medical Technology

Transfer from Madison College, Harrisonburg, Va.

Basketball, 1935-37; Hockey, 1935-37; Cotillion Club, 1936-39; President, Athletic Association, 1938-39; Senior Representative, Student Government Council, 1938-39; Varsity Hockey, 1938-39.

MARTHA RACHEL RAYMER
DAVISON, NORTH CAROLINA
B.S. in Sociology

DORIS LEE ROPER
RICHMOND, VIRGINIA
B.S. in Sociology

Transfer from Davidson College.

American Student Union, 1936-39; Psychology Club, 1937-38; President, American Student Union, 1937-38; Glee Club, 1937-39; Reporter, *Atlas Paper*, 1937-39; House President, 1938-39; Member of Student Government Council, 1938-39.

Transfer from Arlington Hall Junior College. Cotillion Club, 1937-39; Basketball, 1937-39; Vice-President, Senior Class, 1938-39.

SENIOR
CLASS



OLIVE LUCILLE SIDDONS
SANDY HOOK, VIRGINIA
B.S. in Sociology

EDITH CLAIRE THOMAS
LYNCHBURG, VIRGINIA
B.S. in Sociology
Transfer from Lynchburg College, Lynchburg,
Va.



GLADYS VAIDEN
B.S. in Nursing

MARGARET S. VAUGHAN
LEE, VIRGINIA
B.S. in Sociology



SENIOR
CLASS

HELEN WENTLANDT

WESTFIELD, NEW JERSEY

B.S. in Nursing

Elizabeth General Hospital.

Transfer from Teachers College, Columbia.

KATHRYN WHEELER

RICHMOND, VIRGINIA

B.S. in Nursing

Transfer from Elou College and Willis Hospital
School of Nursing.

LOIS GOODWIN WILLIAMS

SALFEM, VIRGINIA

B.S. in Sociology

Transfer from Asbury College, Kentucky.

MARY LEE WILLIAMS

JACKSONVILLE, FLORIDA

Bachelor of Fine Arts

Cotillion Club, 1935-39; Dramatic Club, 1938;
Art Student League, 1935-39; *Atlas* Newspaper,
1937-38; Feature Editor, *Atlas*, 1938; Literary
Editor, *Atlas*, 1939.

JULIAN CARLTON WRIGHT

LAWRENCEVILLE, VIRGINIA

Bachelor of Fine Arts

Atlas Paper, 1935-36; Art Students' League,
1935-39; Exhibit Committee, Chairman; Basket-
ball, 1937-38.



Frye, Maher, Warrick, Hay

JUNIOR CLASS

OFFICERS

JANE WARRICK
CHRISTINE MAHER
ELLEN FRYE
NELL HAY

President
Vice-President
Secretary
Treasurer

JUNIOR CLASS

JEAN ARNOLD

EVELYN DODD

MARJORIE BEHLE

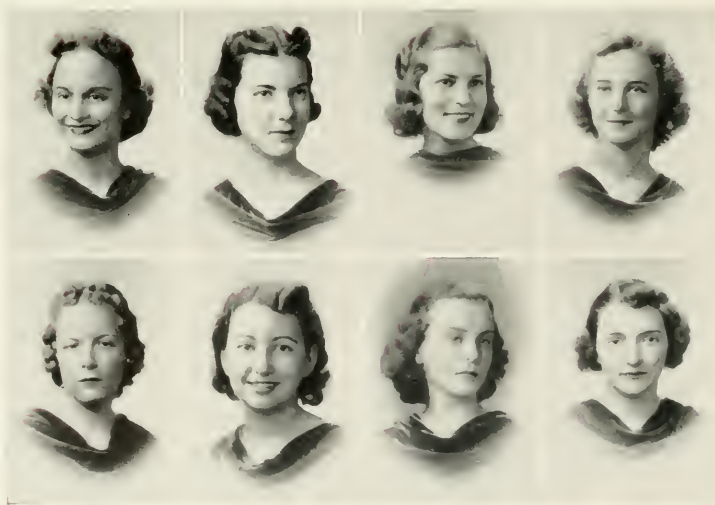
DOROTHY DUDLEY

CATHERINE BURDETT

ELLEN FRYE

ARLINE CARLSON

HELEN FUCHS





MURIEL GOMBERG

NAOMI GOOCH

BETSY HARPER

NELL HAY

ALICE HEJDA

DOUGLAS HOUCHENS

AMELIA JASTREBSKI

CHRISTINE MAHER

JUNIOR CLASS

JUNIOR CLASS

HELEN MARTIN

JOYCE McLANE

SARAH MOORE

RUTH MURPHY

JAYNE OBERMEYER

PATRICIA SHAW

MARY E. POYTHRESS

GRACE SLOCUM





ANNA J. SMITH

ALICE STRAUSS

ADELAIDE SNEAD

JANE WARRICK

DIXIE LEE SNODGRASS

MARY J. WHITEHORNE

MARY JO STAHL

LOUISE WOODSON

MARTHA WOODSON

JUNIOR CLASS



FITTS, HELMINGER, GIBSON, VAN DOREN

SOPHOMORE CLASS

OFFICERS

MADLYN HELMINGER
ELIZABETH GIBSON
MARYETTA FITTS
FRANCES VAN DOREN

President
Vice-President
Secretary
Treasurer



ADAMS, ALEXANDER, ANDERSON, ANGLE, ARBOGAST
 AVERY, BARIHAM, EAZLE, BLANTON, BRITTON
 CHAPLINSKY, CLEMENTS, COSBY, CREWS, DRIGGERS
 DUDLEY, FITTS, FLEICHER, GALFSKI, GANNETT
 GENTILE, GIBSON, A. HARVEY, L. HARVEY, HELMINGER

SOPHOMORE CLASS



HETZER, HOWARD, INGRAHAM, KIENE, KIGHT
 LEVIN, LEISFIELD, MALLORY, MARTIN, McNEIL
 McGRUFF, MILLS, MOON, MOORE, MORAN
 MORAN, PHILLIPS, SCHURZ, SNEAD, STEVENS
 STRATTON, THAYER, TURNER, VAN DOREN, WARRINER, YEAMANS

SOPHOMORE CLASS



KNIGHT, TYLER, BEASLEY, NOONAN

FRESHMAN CLASS

OFFICERS

PHYLLIS KNIGHT

President

MIRIAM TYLER

Vice-President

FRANCES NOONAN

Secretary

FLORENCE BEASLEY

Treasurer



ADAIR, ADAMS, ALBRIGHT, BEASLY, BEASLY
 BLAKESLEE, BROWN, BURK, COREY, COSBY
 CRUICKSHANK, DIETRICH, DEW, DOSSIN, ELLIS
 FIDLER, FIELDING, FITZGERALD, GANES, GARY
 GLANN, GOULDIN, HALE, HARKNESS, HARWOOD, HINES
 HOOD, HUGHES, KIMBALL, KINNEY, KNIGHT, LAWDER

FRESHMAN CLASS



LEITCH, LLOYD, LONGERAN, MANSFIELD, McCABE
 McCANN, MOORE, NOONAN, NUTTER, PATTERSON
 PERRIN, PULLEN, RALPH, ROWLETT, RUCKER
 RUST, RUTHERFORD, SAUNDERS, SIWARD, SHELANDER, SMITHIE
 SOBIES, SPENSER, SLOAN, SCHMIDT, STERRETT, TRIMMER
 TYLER, UNJACK, VALENTINE, WHITE, WILLIAMS, WILSON

FRESHMAN CLASS



SCHOOL OF STORE SERVICE EDUCATION

LOUISE BERNARD *Professor*

ANNA MAE JOHNSTON *Assistant Professor*

MEMBERS

KATHERINE BELL	WILLIAM HAVILAND
JAMES BROWN	MARIE JURGENS
ETHEL EDWARDS	GERALDINE MITCHELL
MADOLYN FLYNN	KATHERINE MARKS
W. C. McCARGO	
H. P. VAN LEAR	
KATHLEEN WILSON	



GRADUATES

OFFICERS

LOUIS OWENS *President*

MEMBERS

JOSEPH ADAMS
 CATHERINE ANZOVINE
 ELIZABETH BALLENGER
 MARIHA BARNARD
 ANNESLEY BOND
 KATHERINE BELL
 KENT BLAIR
 MIRIAM BOPP
 IVA BOYD
 MARY BROUGHTON
 JAMES BROWN
 ALICE CARRIGAN
 JOSEPHINE CHENAULT
 JUDITH COON
 MARY COX
 LEE CRUTCHFIELD
 CECILE CULBERTSON
 ETHEL EDWARDS

SARAH FAISSET
 EDNA FISHER
 MADOLYN FLANN
 ALICE FRAZEE
 SUSAN GIBSON
 MORION GOTTLIEB
 MARY LOUISE GULICK
 EDITH HUMPHRIES
 WANDA IBISCH
 MARY JONES
 CARA KANADY
 DAVID KATZ
 MARION KLIEN
 RUTH LEONARD
 LOIS MCGREGOR
 JANE MASSIE
 GERALDINE MITCHELL
 KATHLEEN WILSON

PEARLE MOELLER
 LOUIS OWENS
 WAILA PEARSALL
 ADELE RAPP
 CAROLYN RICHARDSON
 HARRIET ROBERTS
 FLORENCE SANFORD
 EDWARD SPRING
 FRANCES STANLEY
 FRANCES TREDWAY
 H. P. VAN LEAR
 MARIE VEST
 BILLIE VLIET
 ELIZABETH WALTER
 JANE WILSON
 PHYLISS ZAMBONI
 RUTH JONES
 MARTHA RIIS



PUBLIC HEALTH NURSES

OFFICERS

MRS. MINNIE BLEASE	President
MISS MARGARET VAUGHAN	Vice-President
MISS EUNICE GOODMAN	Secretary
MISS JOSEPHINE SYKES	Treasurer

MEMBERS

FRANCES ALLEN
 MINNIE BLEASE
 MARY BONNER
 IOLA BRYAN
 HAZEL BRYANT
 MARY COPELAND
 MARIANNA COUCH
 ROSA DAVIES
 NORMA DIAZ
 ELIZABETH DORDEN
 LOUISE EAST
 MAUDE EDWARDS
 MARY JANE ELLIS
 MARY FLIPPIN
 LAVENIA FULTON
 LOUISE GILL
 EUNICE GOODMAN

LILLIAN GRANES
 MYRTLE GORTON
 MARGARET KELLY
 FRANCES KILGO
 MARGARET LIVERMAN
 ANNE MASLOW
 ARETA MATTACK
 EDNA MAYSON
 LEAH MILLER
 ANNE MYERS
 DOROTHY NEILL
 MARY PATTEN
 R. E. PIPPIN
 NELL RENNICK
 LEONA RIGSBY
 HELEN RIGGSBEE

ANNE SHAFER
 KATHERINE SHUFORD
 GRACE STOVALL
 JOSEPHINE SYKES
 SARAH TAYLOR
 MAMIE THOMPSON
 MINNIE THORNE
 HELEN TREXLER
 MARY VADEY
 MARGARET VAUGHAN
 BLANCHE WINCENT
 EMMA WARE
 DOLLIE WEEKS
 HELEN WENTLANDI
 HAZEL WILFONG
 DORLIE WINSTEAD
 ETELKA YOUNG



PUBLIC HEALTH NURSES

OFFICERS

ESTELLE GILL *President*
 RACHEL LAYFIELD *Vice-President*
 PAULINE NEAL *Secretary*
 VIRGINIA WELCH *Treasurer*

MEMBERS

KATHLEEN CLARK
 MYRTLE COGBURN
 ANNE J. CROSTIC
 LETHER GLEATON
 SARAH GRANT
 ROSAMOND HATCH
 ANNA LEE HEDRICK

MARY LOUISE HEWITT
 RACHEL LAYFIELD
 NANCY MARSTON
 MARY N. MEARS
 LARINE K. MCDANIEL
 RUBY McLEOD
 PAULINE NEAL
 DOROTHY K. NEIL
 SARA M. ORR
 ESTER W. PRITCHARD
 EDITH G. RAWE
 JANET SIKES

MYRTLE WOOD SITTON
 MARGARET PAGE THOMPSON
 CHARLOTTE THRIFT
 VIRGINIA WELCH
 MARION WHITAKER
 ELIZABETH WOOD
 EUNICE R. WALKER





ACTIVITIES +



LOUISE MARABLE
President of the Student
Government



MISS STONE
Sponsor

DR. FALES
Sponsor



STUDENT COUNCIL

ELIZABETH BROWN	<i>Vice-President</i>
LOUISE WOODSON	<i>Secretary</i>
SARAH BLANTON	<i>Treasurer</i>
ELIZABETH PURKINS	<i>Senior Representative</i>
JANE WARRICK	<i>Junior Representative</i>
NELL HAY	<i>Junior Representative</i>
KATHERINE INGRAHAM	<i>Sophomore Representative</i>
ANN WARRINER	<i>Sophomore Representative</i>
ALICE WILLSON	<i>Freshman Representative</i>
RACHEL RAYMER	<i>House President, Founders Hall</i>
MARGARET CROWE	<i>House President, Graduate Dormitory</i>



INTER-CLUB COUNCIL

OFFICERS

- LOUISE MARABLE *President*
 Student Government Representative
- ELIZABETH BROWN *Vice-President*
 Student Government Representative
- MARY ELIZABETH POYTHRESS *Treasurer*
 House Council Representative
- EDITH MANN *Secretary*
 Senior Class Representative

INTER-CLUB COUNCIL

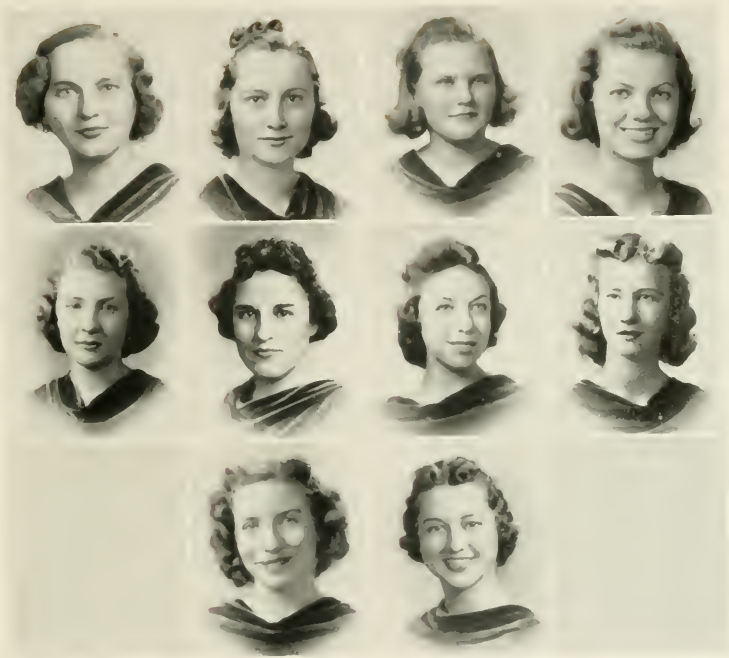
MARY JO STAHL	<i>Junior Representative</i>
ELIZABETH GIBSON	<i>Sophomore Representative</i>
KATHERINE MARKS	<i>Wigwam Representative</i>
BETTY GWALTNEY	<i>Atlas Representative</i>
EVELYN GOYNE	<i>Louella Townley Representative</i>
PEGGY LAYMAN	<i>Art Students League Representative</i>
ANNA JAMES SMITH	<i>Dramatic Club Representative</i>
MARYETTA FITTS	<i>Athletic Association Representative</i>
LUCILLE BRITTON	<i>Glee Club Representative</i>
LOUISE EISEN	<i>American Students Union Representative</i>
JEAN ARNOLD	<i>Cotillion Club Representative</i>





WIGWAM STAFF

KATHERINE MARKS	<i>Editor</i>
DR. MARGARET JOHNSON	<i>Sponsor</i>
ELIZABETH BROWN	<i>Business Manager</i>
LOUISE EISEN	<i>Associate Editor</i>
ELIZABETH GIBSON	<i>Photographic Editor</i>
SARAH BLANTON	<i>Advertising Manager</i>
MARY JO STAHL	<i>Feature Editor</i>
MURIEL GOMBERG	<i>Art Editor</i>
LOUISE WOODSON	<i>Circulation Manager</i>
JANE WARRICK	<i>Assistant Circulation Manager</i>
JAYNE OBERMEYER	<i>Assistant Advertising Manager</i>



ATLAS STAFF

PHYLLIS JASKAUSKAS	Editor
KATHERINE MARKS	Business Manager
BETTY GWALTNEY	Associate Editor
ELSIE BLANK	Associate Editor
ELIZABETH DURHAM	Feature Editor
GRACE SLOCUM	Feature Editor
MURIEL GOMBERG	Art Editor
EVELYNE GOYNE	Literary Editor
MARTHA ANDERSON	Circulation Manager
PATRICIA SHAW	Advertising Manager



EVELYNE GOYNE
President

DR. MARGARET JOHNSON
Sponsor



DR. S. J. MCCOY
Sponsor

ELSIE BLANK
Vice-President



PHYLLIS JASKAUSKAS
Program Chairman

MURIEL GOMBERG
Secretary and Treasurer



CLARA HIRSHON

GRACE SLOCUM



LOUISE EISEN

BETSY HARPER

LOUELLA TOWNLEY LITERARY SOCIETY



COTILLION CLUB

OFFICERS

ELIZABETH BROWN	<i>President</i>	MARY ELIZABETH POYTHRESS	<i>Secretary</i>
EDITH MANN	<i>Vice-President</i>	LOUISE WOODSON	<i>Treasurer</i>
MRS. VIRGIL CHALKLEY	<i>Sponsor</i>		





THE GLEE CLUB

OFFICERS

ANNA J. SMITH *President*
 EVELYN GOYNE *Vice-President*
 KATHERINE BAKER *Secretary-Treasurer*
 MARY COSBY *Custodian*
 MRS. HELEN F. RHODES *Sponsor*

MEMBERS

MARGARET AVERY	GARLAND HUGHES	JANE WARRICK
LUCILLE BRITTON	IRMA HUGHES	BERNICE WILLIAMS
ELSIE BLANK	OLIVIA LEADBETTER	MARTHA WOODSON
ALICE BULLARD	IDA MOORE	MARJORIE BEHLE
STEPHINA CHAPLINSKY	KATHLEEN MANSFIELD	TOI DEW
GRAY CHENAULT	HELEN MARTIN	PAT SHAW
BETTY CREWS	MARY ROWLETT	GRACE SLOCUM
ALICE GARABEDIAN	RACHEL RAYMER	MARTHA TERRELL
	ANN SEWARD	
	KATHLEEN SPENCER	



BARNSTORMERS

OFFICERS

ANNA J. SMITH *President*
 ELEANOR MOON *Vice-President*
 ELIZABETH GIBSON *Secretary*
 SARAH BLANTON *Treasurer*
 MRS. ALICE WHITESIDE JORG *Sponsor*

MEMBERS

ELLEN BLAKESLEE	BETTY GWALTNEY	MARGARET MOORE
ELIZABETH CAVAN	VIRGINIA HALE	PAT MORAN
FRANCES COSBY	NELL HAY	JANE OBERMEYER
PAGE CRAWFORD	MADelyn HELMINGER	MARIE PIETRI
ELSIE DOSSIN	ELSIE KIENE	EDITH PHILLIPS
ELIZABETH DURHAM	GRACE KIGHT	JOSEPHINE PULLEN
MARYETTA FITTS	JANE LEISFIELD	MARY RUTHERFORD
ANNIE BERYL GANNETT	VERNELLE LLOYD	SUE SCHMIDT
RACHEL GLANN		KAY SPENSER

PLAYS PRODUCED

MURDER IN THE RED BARN	WALLFLOWERS	TELL ME, PRETTY MAIDEN
STAR-STRUCK	NEVER TOO OLD	ROSE OF THE SOUTHLAND



ART STUDENTS LEAGUE

OFFICERS

MURIEL GOMBERG *President* SARAH FRANCES CROSS *Secretary*
 FRANCES BEAR *Vice-President* MARION GARTHRIGHT *Treasurer*

MEMBERS

RAY ADAMS	ULYSSES DESPORTES	CAROLINE MEITS
ANNA ADAMS	PEGGY ELLIS	PEARL MOELLER
MARY ALMOND	CARMEN FISHER	RYLAND MCCANN
MARY ALBRIGHT	PEYTON FIDLER	BETTY MORAN
DOT ALEXANDER	MARION GARTHRIGHT	KATHLEEN MANSFIELD
AMANDA ARBOGAST	SOL GOLDSTEIN	EVA LEE NUTTER
MARGARET AVERY	MARY GREEN	MARGARET O'GRADY
POLLY BATES	BETSY HARPER	OTIS ORR
FLORENCE BEASLY	KENT HARRISON	MARIE PIETRI
FRANCES BEASLY	GLADYS HARKNESS	MAXINE RALPH
FRANCES BEAR	BOBBIE HEDGES	HAROLD RAPP
LEON BEAR	ARVILLE HARWOOD	NELLIE RUI
MARGARET BIWELAQUA	EUFULA HOOD	RUTH ROACH
MAURICE BONDS	ALMA HINES	ALICE SHAFER
LOU BRAY	MOMBRAY HEADERSON	DORIS SHELANDER
MOLLY BRENT	DOUGLAS HOUCHEMS	JANE SLOAN
CATHERINE BURDETTE	EMILY JONES	ADELAID SNEAD
GERALDINE BURK	PHYLLIS KNIGHT	EVA SOBELLUF
JUANITA BURSTEIN	LAURA KINNEY	BETTY STUB
ANNETTE BULL	ELSIE KIENE	DIXIE LEE SNODGRASS
HARRIET BOGART	FRANCES LONERGAN	ERCELLE SAUNDERS
BRADLEY BRAGG	PEGGY LAYMAN	JEANNE SIERRITT
MARATHA COTES	BILLY LIPSCOMB	EVERETT STUTZ
LIZ COBEY	EDNA LAWDER	LAURA ANNA TURNER
BOBBIE CARTER	EDITH MANN	GAIL TAFFAR
SARAH F. CROSS	MARTHA MARTIN	BETTY WALLERSTEIN
JAC CRESFY	PAT MCGRIFF	SUE WOODS
ELSIE CRUICKSHANK	ALEXA MCCALL	JULIE WHALEY
DOT DUDLEY		ELEANOR UNIACKE



AMERICAN STUDENT UNION

OFFICERS

LOUISE EISEN *President*
 ANITA COVILLE *Vice-President and Program Chairman*
 HELEN FUCHS *Secretary*
 GRACE SLOCUM *Treasurer*
 DR. DORIS FALES *Sponsor*
 DR. HOWARD DAVIS *Sponsor*

MEMBERS

ELSIE BLANK	ANNIE GANNET	RACHEL RAYMER
ALICE BULLARD	HENRIETTA LOAB	MAXINE RALPH
SOL GOLDSTEIN	JUNE ELLYN KETSULES	JANE SLOAN
VIRGINIA HALE	PEARL LEVIN	MARY JANE WHITEHORN
CLARA HIRSHON		STEPHINA CHAPLINSKY



A T H L E T I C S +





ATHLETIC ASSOCIATION



OFFICERS

ELIZABETH PERKINS *President*

ELLEN FRYE *Vice-President*

MARYETTA FITTS *Secretary*

DORIS HOWARD *Treasurer*

LOIS ROBERTS, *Sponsor*



MARGARET MOORE
Left Inside

SARAH BLANTON
Center Forward

BETTY GWALTNEY
Right Fullback

BETTY CREWS
Right Wing



PHYLLIS HAVENS
Right Inner

JUNE SOWERS
Goal Keeper

ELIZABETH PURKINS
Left Wing

MARJORIE FARLEY
Right Inside

DORIS HOWARD
Center Half



MAYBELLE GARY
Left Fullback

AMELIA JASTREKSKI
Wing

MARYETTA FITTS
Left Halfback

JOSEPHINE NOVAK
Right Halfback

V A R S I T Y H O C K E Y



HOCKEY

OFFICERS

SARAH BLANTON *Captain*
 MARGARET MOORE *Manager*
 MADELYN HELMINGER *Assistant Manager*

SQUAD

SARAH BLANTON	JOSEPHINE NOVAK	MAYBELLE GARY
MARYETTA FITTS	ALICE STRAUS	MARY ELLEN TRIMMER
LOUISE MARABLE	BETTY GWALTNEY	BETTY CREWS
ELIZABETH PURKINS	DORIS HOWARD	MARGARET MOORE
PHYLISS HAVENS	SHIRLEY FITZGERALD	JUNE SOWERS
MICKY HELMINGER	JANE LEISFIELD	ELLA MAE RYBURN
LOUISE WOODSON	MARGY FARLEY	MAXINE ROLPH
MARION NOONAN	ELIZABETH POYTHRESS	AMELIA JASTREBASKI
	JEAN ARNOLD	
	CARBIN BEVERLEY	
	ELLEN FRYE	
	VERNELLE LLOYD	



JO NOVAK
Captain

MARTHA GANES
Forward

JERRY BURK
Forward



BETTY GWALTNEY
Guard

MAXINE RALPH
Guard

ALICE WILLSON
Forward



MARY ALBRIGHT
Guard

LOUISE WOODSON
Manager

MARGARET MOORE
Guard

VARSITY BASKETBALL



BASKETBALL

OFFICERS

JOSEPHINE NOVAK *Captain*
 LOUISE WOODSON *Manager*
 ELLEN FRYE *Assistant Manager*

SQUAD

MARY ALBRIGHT
 JERRY BURK
 FRANCES BEASLEY
 SARAH BLANTON
 BAGLEY BRAGG
 ELLEN FRYE
 LAURA FIELDING
 MARYETTA FITTS

MARTHA GAINES
 MAYBELLE GARY
 BETTY GWALTNEY
 DORIS HOWARD
 VERNELLE LLOYD
 JANE LEISFIELD
 MARGARET MOORE
 JOSEPHINE NOVAK
 BETSY NELSON
 ELLA MAE RYBURN
 MAXINE ROLPH

DORIS ROPER
 MARTHA TERRALL
 JANE VALENTINE
 ALICE WILLSON
 LOUISE WOODSON
 ELIZABETH BROWN
 LOUISE MARABLE
 FLORENCE BEASLEY





F E A T U R E S +





LOUISE WOODSON *Chairman*
 SARAH MOORE *Assistant Chairman*

MAY COURT

- ELSIE BLANK *Queen*
 ELIZABETH BROWN *Maid of Honor*
 ELIZABETH DURHAM *Senior Representative*
 ALEXA McCALL *Junior Representative*
 MARY E. POYTHRESS *Junior Representative*
 ANNE WARRINER *Sophomore Representative*
 CATHERINE INGRAM *Sophomore Representative*
 CORBIN BEVERLY *Freshman Representative*
 RACHEL GLANN *Freshman Representative*



PHYLLIS JASKAUSKAS
Most Intellectual

DR. MARGARET JOHNSON
Most Popular Professor

EDITH MANN
Most Popular

LOUISE WOODSON
Most School Spirit

W H O ' S



MARTHA TERRELL
Wittiest

MADELYN HELMINGER
Most Dependable

ELSIE BLANK
Best Looking

JERRY BURK
Most Athletic

W H O +

AMERICA'S GREATEST PAYMASTER

In 1938 the Institution of Life Insurance paid out to America's "Williams" and "Marys" \$2,600,000,000 in cash. Because of this staggering sum, the "Marys"—and the children—in thousands of instances, continue to dwell in the realm of security. And many "Williams," having provided themselves with retirement incomes, look with complacency toward the years to come.

"Mary" in particular has a big stake in Life Insurance. Single or married, she promotes her best interests by endorsing its unique benefactions.

THE LIFE INSURANCE COMPANY OF VIRGINIA

RICHMOND

Established 1871

"OLDEST SOUTHERN LIFE INSURANCE COMPANY"

BEN PARKER

FLORIST



Flowers have a meaning of their own,

They are like a friendly touch,

They tell all you ought to know,

But they never tell too much



CALL BEN

DIAL 3-3056

202 East Grace Street

LEARN TO BOWL CORRECTLY

Free Lessons by

PHYLLIS ROBERTS

Hostess—Instructor

PRICES:

9 A.M. to 6 P.M. Students 10 Cents

Adults Two for 25 Cents

After 6 P.M. 15 Cents to All



JOHN MARSHALL ALLEY'S CORPORATION

"Richmond's Best Alleys"

Sixth and Franklin

Dial 3-8666

PHOTOGRAPHERS
FRAMES

COMMERCIAL WORK
MINIATURES

FOSTER STUDIO

RICHMOND, VIRGINIA

"Nothing Missing But the Voice"

PORTRAITS
IN OILS

TELEPHONE
3-2711

AHERN AND CARPENTER

Incorporated

WHOLESALE FRUITS AND
PRODUCE

1309 East Cary Street
RICHMOND, VIRGINIA

SARAH LEE KITCHEN

701 West Grace Street

RICHMOND, VIRGINIA

Dial 3-2805

TABB, BROCKENBROUGH AND RAGLAND

GENERAL INSURANCE

Phones: 2-6546—2-6548

1101 E. Main St. Richmond, Va.

"Insurance, Your Silent Guardian"

William and Mary Class Rings, Invitations
and Personal Cards, Club and Seal Jewelry

WALTER B. ANDERSON L. G. BALFOUR PRODUCTS

111 Broad-Grace Arcade Richmond, Va.

A COLLEGE EDUCATION COSTS MONEY!

It's wise to insure while you are young. Let us plan a life insurance program and you'll be protecting Dad and Mother during those years with a life insurance policy. Life insurance will provide comfort and security for them in event of your premature death, or, if you live, for yourself in the declining years of old age.

HOME BENEFICIAL ASSOCIATION

Ordinary and Industrial Insurance

HOME OFFICE

RICHMOND, VIRGINIA

CHELF'S DRUG COMPANY

938 West Grace Street

RICHMOND, VIRGINIA



For Your
Prescriptions
Drugs, Cosmetics
Magazines, Confections, etc.



Dial 5-1716 and 5-1717



Authentic Antique
Reproductions for
nearly 50 years

BIGG'S ANTIQUE COMPANY

*Richmond, Virginia
Washington, D. C.
Atlanta, Georgia*

T. & E.

LAUNDRY SERVICE

Saves You Work—
Saves You Time—
Saves You Money!

These Three Savings:
Work-Time-Money
Are Most Important



We Can Be "Mother's Real Helper"
By Keeping Clothes Laundered

T. & E. LAUNDRY CO., Inc.

"Mother's Real Helper"

927 to 933 West Marshall Street

DIAL 3-1911

COMPLIMENTS
OF
STUDENT
PUBLICATIONS



THE
"WIGWAM"
AND THE
"ATLAS"

World's Largest Publishers

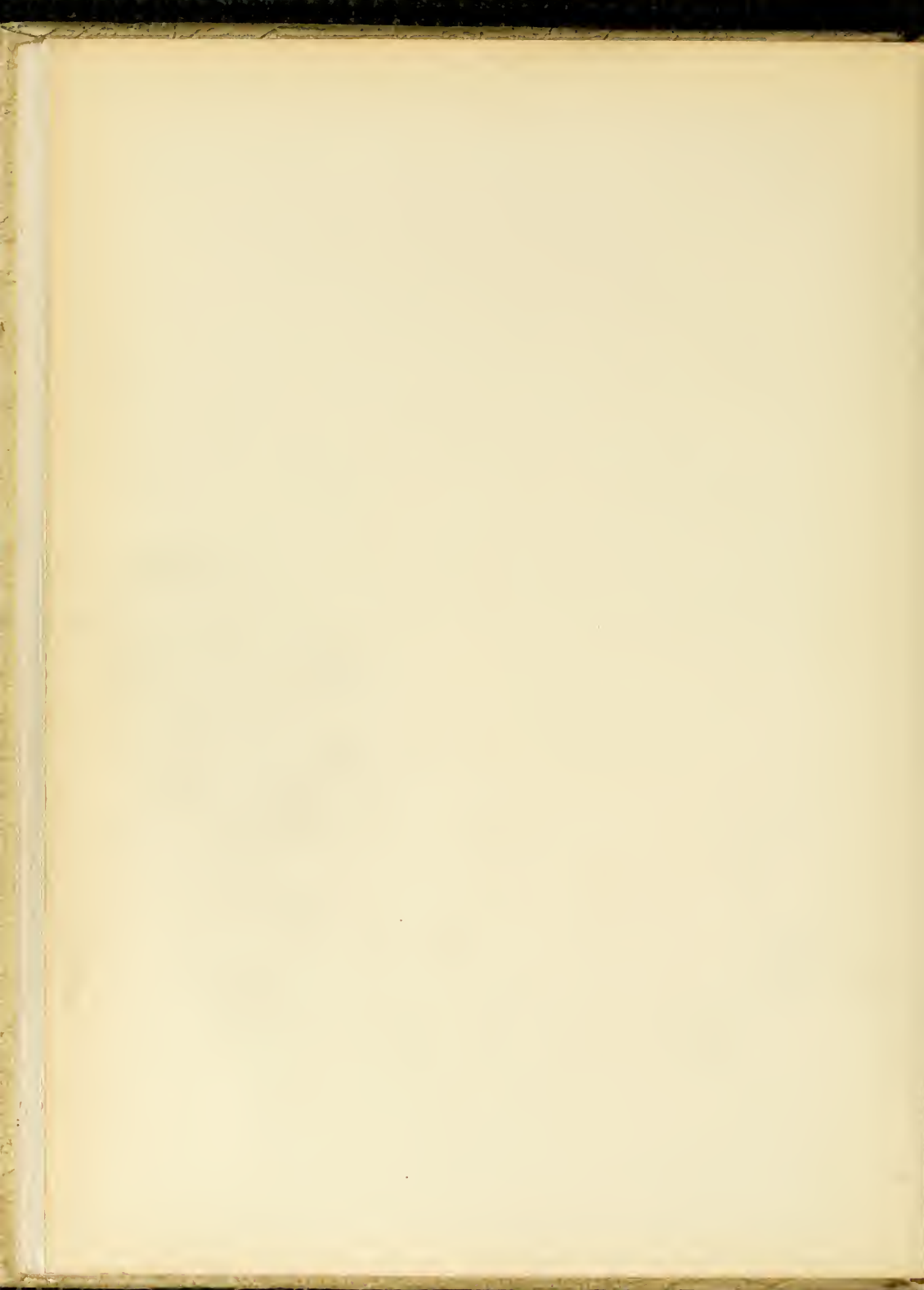
THIS BOOK DESIGNED AND PRINTED BY

Benson

PRINTING COMPANY ☆ NASHVILLE

of College Annuals





LIBRARY
COLLEGE OF WILLIAM AND MARY
RICHMOND DIVISION

