



VCU

Virginia Commonwealth University
VCU Scholars Compass

Pattern Project

Dept. of Interior Design

2019

Pattern Project - The Star Guide

Candice Duncan

Follow this and additional works at: <https://scholarscompass.vcu.edu/pp>



Part of the [Interior Design Commons](#)

Recommended Citation

<https://scholarscompass.vcu.edu/pp/16>

This Book is brought to you for free and open access by the Dept. of Interior Design at VCU Scholars Compass. It has been accepted for inclusion in Pattern Project by an authorized administrator of VCU Scholars Compass. For more information, please contact libcompass@vcu.edu.



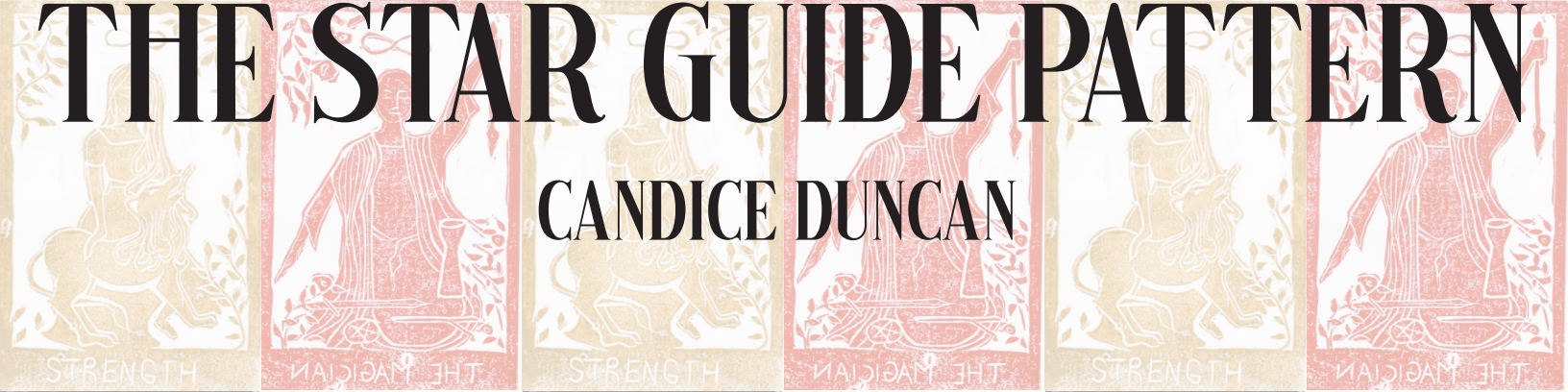
The Star Guide





THE STAR GUIDE PATTERN

CANDICE DUNCAN



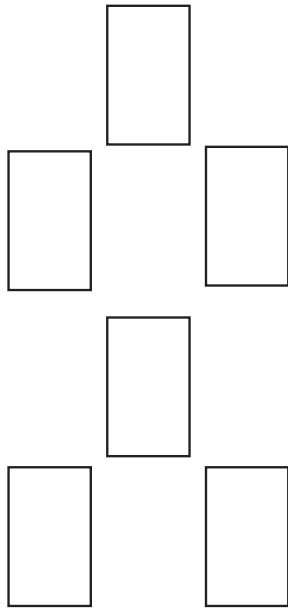
INSPIRATION



The three major arcana tarot cards Strength, The Star, and The Magician are three cards I found resonated with me at this period in my life. The “Star Guide” pattern is an adaptation of the Rider Waite Smith Tarot card deck seen on the left.

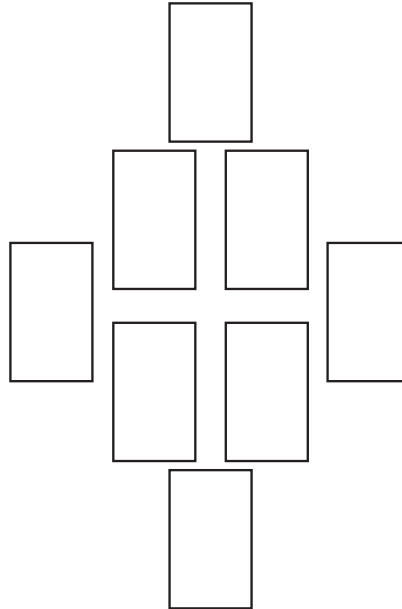
INSPIRATION

Star Guide Spread



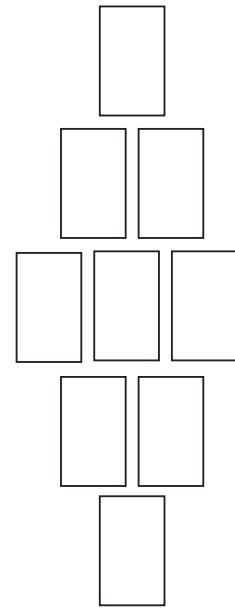
- present situation
- strengths
- challenges
- final outcome

Planetary Spread



- self
- moon, mercury,
venus, mars, jupiter,
saturn

Mandela Spread



- desires
- higher purpose
- self awareness
- life path

CRAFT

Step one: draw out design

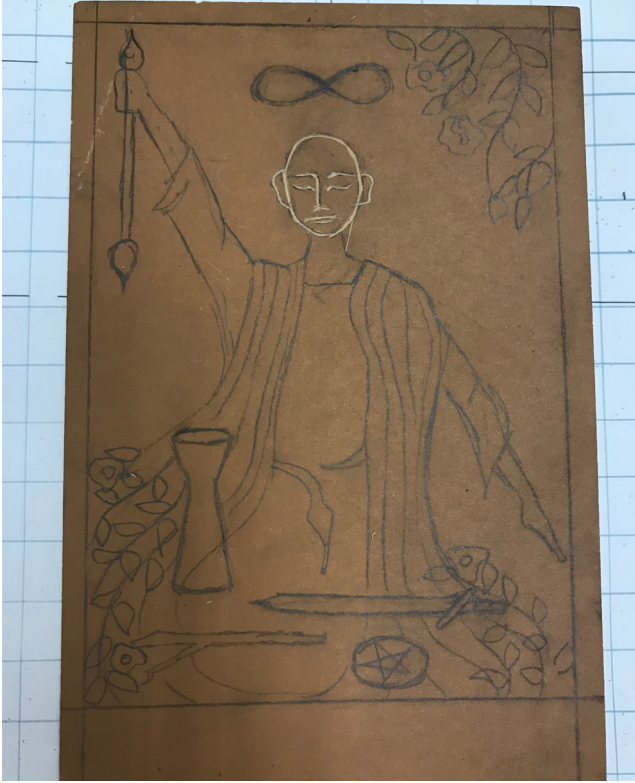


Step two: carve out the negative space



CRAFT

pre-carving drawing



carving process



PATTERN DEVELOPMENT

Planetary Spread design



Computer generated spread layouts experimenting with color

Star Guide Spread design



Mandela Spread design



INTENDED USAGE

Coffee Shop/ Bar



FINAL PRINT

