

Yearbook Will Keep Its Original Name Of Wigwam

The Wigwam will remain the Wigwam...a petition to that effect was accepted by the yearbook staff October 31.

The petition, signed by several hundred students and the alumni, was the result of poor response to the proposed change.

Photographs of individual students for the Wigwam were completed last week, but many students failed to have their pictures taken. While a larger number than usual responded, many ignored the time schedules posted and consequently missed their appointments. Adjustments were made for students unable to meet their appointments upon contact with the staff.

November 29 has been set as an absolute deadline for making payments on the 1951 yearbook, according to Carson Overton, Wigwam business manager. Anyone who has paid their \$2 deposit will forfeit this deposit if the balance is not paid by this date.

Bills to the parents and individual students are being sent out this week. Payment of these bills will also be expected by November 29. Overton explained that the reason for payments so early this year is that the staff will

(Continued on p. 4)

Chest Quota Falls Short Of Its Goal

The 1950 Community Chest quota for RPI fell short of its \$850 goal.

Collections amounted to \$698.98, \$151.02 short, according to figures released by Mrs. Louis Washer, general chairman of the Red Feather drive here.

Faculty contributions totaled \$561, and student donations were \$137.98.

Mrs. Washer stated that this was the first time in the history of RPI that the quota has not been reached. During 1948-49, donations exceeded the amount asked by the Community Chest by over \$100.

Richmond's assigned quota also fell short this year.

The decline in contributions, Mrs. Washer said, could have been caused by Federal and State taxes, the general economic situation, or the inflationary trend throughout the country.

Volunteer workers, both faculty and students, are to be commended for their work and cooperation during the drive, Mrs. Washer stated.

SGA To Give Formal Dance November 18

The first formal SGA dance of the year will be held in the Mosque on November 18. This dance will be termed as the Opening Dance of the 1950-1951 year, since this is the first formal dance which all students may attend.

It is the hope of the SGA that the Opening Dance may become an annual affair at RPI just as Mid-Winters has been a yearly event.

Complete plans for the dance will be announced later, but it has been revealed by Teenie Stevens, SGA vice-president that no admission will be charged for this event.

Constitution For Freshmen Is Ratified

The new constitution for the Freshman class was officially ratified at a meeting held on October 26.

Petitions are now being accepted for the nomination of class officers. The deadline for receiving these petitions has not been set, and names of candidates for the class offices have not been disclosed.

Veteran Actors To Open RPI Production Tonight

Presbyterians Elect Officers

Officers for the Westminster Fellowship at Grace Covenant Presbyterian Church were elected October 24. William Chapin will serve as president.

Others elected were: Jeanne Partin, vice-president; June Moore, secretary; Bob Gossett, treasurer; and Jean Dawson, Inter-Faith council representative. In addition to his duties as president, Chapin will represent the group on the SGA and Inter-Faith council.

The next meeting of the Fellowship will be held Tuesday at 7:30 p.m. in the Church.

The student minister in charge of the club is Charles Book, a student at Union Theological Seminary.

BSU TO MEET

The Baptist Student Union will hold its next general meeting November 16 at 6 p.m. in Grove Avenue Baptist Church. The supper meeting will be followed by a showing of the movie, "In the Circle of His Will."

Students are requested to sign up on the Religious bulletin board in the Ad building.

By Anita Mersel

The student production of "The Glass Menagerie" will open tonight at 8:30 o'clock in the Gymnasium Playhouse. The School of Dramatic Art will continue its first major presentation of the year through Saturday.

The audiences will see veteran players of the RPI stage among the cast.

Vivian Trestman, a junior in the school, has five major productions and numerous one-act plays to her credit. Roles in "Alice in Wonderland", "Romeo and Juliet", "Lady Windemere's Fan", "Arsenic and Old Lace", and "Angel From Hell" are among her achievements. She was born in Brooklyn, New York and attended Maury high school in Norfolk, Virginia where she now lives. In the way of professional theater, Miss Trestman has played two seasons with Green Mountain Playhouse in Vermont and has been active in the annual Tobaccorama.

Ann Graves, who will play the crippled "Laura" in "The Glass Menagerie", hails from Narrows, Virginia. Also a junior in the school, she has appeared in "Alice in Wonderland", "Romeo and Juliet", "January Thaw", "The Tempest", "Angel From Hell", and many one-act presentations. Her theatrical plans after graduation lean toward teaching.

Wamer Callahan, better known as "Buddy" calls Petersburg, Virginia his home. A senior at RPI, he is a veteran of the U.S. Navy, in which he first became drama-conscious. RPI audiences have seen him in seven major productions and numerous one-act plays. To his roles in "Alice in Wonderland", "Romeo and Juliet", "Lady Windemere's Fan", "Arsenic and Old Lace", "An Inspector Calls", "The Tempest", and "Angel From Hell", Callahan adds professional experience at Green Mountain Playhouse and the Richmond Summer Theater.

Peter Prodan, a graduate student, will make his first

(Continued on p. 4)



MAN, THIS WEATHER IS REALLY SOMETHING--A Business class meets in Monroe park in May-in-autumn sunshine on what proved the hottest November 1 since 1919. At 12:30 p.m. the mercury soared to 84, which was two degrees higher than the previous record.

--News Leader photo

Everyone A Booster Member

The Alumni Booster club has ruled that all students, regardless of whether they pay dues, are members of the organization. Eddie Martin, president of the club, said that students who pay dues will be classed as active members. All others will be inactive.

This is a history-making regulation in that no club at RPI that collects dues has ever considered all students members automatically. The Student Government association is the only group with a similar ruling, but the dues-less SGA cannot be classed in the same category with the Booster club in this respect.

In an effort to increase its active membership rolls the Booster club is sponsoring a pep rally tonight at 7 o'clock on the East Lawn. The event will be complete with refreshments, music and dancing. It would be nice to see the East Lawn overflowing with paid-up students taking an interest in the Booster club with the ultimate aim of someday being active in the Alumni Association.

The club faces a problem in attempting to collect dues from as many as possible of RPI's 1,400 students. This is a major undertaking and few persons expect the club to gather in much more than half of the student body. This is a shame considering that nearly all of the present students will someday be eligible for membership in the present group.

We sincerely hope that the Booster club reaches its goal, or at least the highest possible point toward it. A strong and prosperous Alumni association serves as a social organization for graduates and is a credit and aid to the college. The Booster club is an important cog in the building of the association, and its efforts will be rewarding to the parent group, the college, students and itself. We urge that everyone support the Booster club and help build a strong Alumni Association. See you at the pep rally.

Happy Days

Well, "The Glass Menagerie" opens in the Gymnasium Playhouse tonight. This first production of the drama season begins another series of happy days at RPI. Whether in the "round" or on stage, regardless of the play, no matter who the players are, we know the production will be superb. They always are.

Drama school productions are among the highlights of RPI's entertainment. They are looked forward to with delight. There's only one trouble--not enough of them. But, we remember pleasantly "An Inspector Calls", "Angel From Hell", "Arsenic and Old Lace", and many others. And we remember too, Judith Midyette, Charles Cagle, Morris Law, Ruth Printup, Ralph Bralley and others. It is sad that these five artists of the stage will be absent this year. Their presence left nothing to be desired.

And nothing is left to be desired by the Drama school's productions. Students can always be rest assured that actors, actresses, stage crews, director and all connected with the production will have polished the play to the peak of perfection.

Proscript

Published weekly during the school year EXCEPT DURING HOLIDAYS by students of the Richmond Professional Institute, College of William and Mary Virginia Polytechnic Institute Cooperating.

901 W. Franklin Street, Richmond, Virginia

Entered as second class matter November 12, 1948 at the Post Office at Richmond, Virginia, under the act of Congress of March 3, 1879.

Subscription price \$1 per year

Member: Associated Collegiate Press, First Class Honor Rating
Virginia Intercollegiate Press Association

EDITOR

Charles H. Stebbins

Managing Editor
Joyce Rowleson

News Editor
Edward Brittle

Assistant Managing Editor
Mindy Chovitz

Assistant News Editor
Anita Mersel

Society Editor
Sports Editor
Advertising Manager
Assistant Advertising Managers
Business Manager
Photographer
Librarian
Faculty Advisors

Alice Dooley
Winston Overton
Richard Stinnett
James Dillon and Fred Sloan
Clarence Goff
Deane Parrish
Dorothy Lewis
Robert Smith and Mrs. D. B. Neely

Seniors in DE Tour Local Store

Under the leadership of Miss Helen Norton, the senior Distributive Education students toured a local department store last week.

Mr. William Thalheimer, Jr., vice-president and general manager, spoke to the students about retail problems and the Thalheimer organization. After this the group was conducted on a tour of the store and the warehouse to see the modern methods of receiving and marking stock.

OT's, PT's Plan Outing Friday

An outing to Sledd's lake on Friday, November 10 will be the first joint program of the Occupational Therapy and Physical Therapy clubs, it was announced by Bernice Wiencroft, president of the OT club.

Cars will leave the Ad building at 6 p.m. The outing is open to members of both clubs and their guests.

The program will include a winnie roast and singing and dancing.

In case of rain the outing will be postponed to a later date.

CLUB CALENDAR

- Nov. 9 Freshman class, Ad 100, 7 p.m. Fencing club, Gym 9, 7:30 p.m. Pep Rally, Gym 8 p.m.
- Nov. 10 P.T. and O.T. outing, to be announced. Fencing club, Gym, 4 p.m.
- Nov. 13 German club, Ad 100 7:30 p.m. Sophomore class elections, SGA office
- Nov. 14 Sophomore class elections, SGA office Inter-Dom council, Cafeteria, 7:30 p.m. SGA Executive Committee, Ad 10, 3 p.m. Joint Honor Councils, Ad B, 6:30 p.m. A.S.L. Party, Gym, 7:30 p.m.
- Nov. 15 SGA, Gym 21-23, 7:15 p.m. Newman club, Gym 21-23, 8 p.m. Fencing club, Gym, 4 p.m.
- Nov. 16 Senior class, to be announced, 7:30 p.m.

MODELS NEEDED

Students who would like to pose for the art classes are asked to see Gwen Garren in gym 20.

Miss Garren will be in her office from 9-12 on each Monday, Wednesday and Friday. The rates will be 75 cents an hour.

Art Professor Stages Own Sculpture Exhibition

By Mindy Chovitz

Honor Council Invites Faculty To It's Meetings

An invitation has been extended to the entire faculty to attend any regular, scheduled meeting of the Joint Honor Councils.

This resolution was passed by the group with the hope that faculty members would participate in the discussions and clear up any misunderstandings which they might have in regard to the Honor System.

Teenie Stevens, SGA vice president, urges all faculty members to attend these sessions in order that they may become more familiar with the Honor Code.

Letter To Editor

Editor: The Proscript

A considerable number of "condolences" have reached me, concerning the retaining of the name "Wigwam" for the college yearbook. It is true that I, personally, consider that name a bit mis-suited for this particular college, as well as this type of college. However, no "condolences" are necessary.

I sincerely appreciate the interest of the people who submitted name suggestions during the time of the contest, and I hope that they are not too disappointed in the final outcome.

However, the student response against re-naming the 20th edition of the annual was so surprisingly strong that, since this is the students' annual which is being considered, we of the staff feel it only democratic and just to consider the attitude of the majority.

Actually, this indication of student interest has been more gratifying than depressing, for it is the first real expression of opinion of the student body which we have realized. I only hope that any future appeals for student re-action will be answered as enthusiastically.

Jack Roach
Editor-in-Chief
1951 Wigwam

Letters to the editor are welcome. The name and address of the writer must be included, but will not be published if requested. The editor reserves the right to edit all letters to conform with the Proscript style. Short letters will be given preference, but longer ones of merit will be considered.

-- Editor

RPI's art department has again won honors--but this time in the form of sculpture. Mr. Wolfgang Behl, assistant professor of fine arts, is staging a one man sculpture exhibition in New York.

Mr. Behl's exhibition started on October 23 and will continue through November 11 at the Bertha Schaefer Gallery. He is showing work in wood, granite, lead and bronze, shaped into human and animal forms in various degrees of abstraction.

Mr. Behl was born in Berlin, Germany and attended the Academy of Fine Arts in Berlin, where he received his BS degree.

His sculpture work is represented at the Addison Gallery in Andover, Massachusetts and in private collections throughout the country. Every spring he has an open air sculpture show in the "Sculpture Court" at RPI.

Mr. Behl has won prizes at the Chicago Art Institute, the Milwaukee Art Institute, and the Virginia Museum of Fine Arts. This is his first one man show.

Grades Are Due By November 13

Mid-semester grades are due in the registrar's office on Monday, November 13. They will be mailed out to students during the Thanksgiving holiday, Mrs. Ann Heller, the assistant registrar announced.

These grades, Mrs. Heller stated, are an indication of the work done by students for the first two months of school.

All applications for those graduating in February should be in by November 20, Mrs. Heller added.

Social Light

Mr. and Mrs. Stanley Gray Rogers of Bluefield, West Virginia, announce the engagement of their daughter, Maryann, to Mr. Robert Lee Moore, son of Dr. and Mrs. James Claude Moore of Kween Mountain, Virginia.

Miss Rogers was graduated from RPI last June. Mr. Moore is attending the University of Richmond.

The wedding will take place December 27th.

The Proscript request students to notify the Society Editor, Alice Dooley, of any engagements, marriages and other items of social interest concerning RPI students. Your cooperation is appreciated.

Special Meeting Of Senior Class

A special meeting of the Senior class has been called by Carson Overton, class president, for Thursday night, November 16. The place of the meeting will be announced later.

The Activities Committee will provide entertainment.

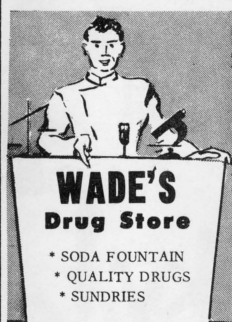
RADIO & TELEVISION SALES AND SERVICE

One Day Service
Free Pick-up and Delivery
Ph. 84-6258-----310 Laurel

Meet Me For Lunch

at

GIBRALL'S
RESTAURANT



WADE'S
Drug Store

- * SODA FOUNTAIN
- * QUALITY DRUGS
- * SUNDRIES

204 N. HARRISON ST.
PHONE 5-0516

SGA Assists The Freshmen For May Day

A steering committee has been organized by the Student Government Association to aid the Freshman class in planning May Day activities.

Serving on this committee are Jo Verner, Carolyn Calhoun, Mary Lou Crowder, and Fred Sloane. Sloane and Jo Verner served on a similar committee last year.

In appointing this committee, Baxter Duffy, SGA president made it clear that they will not do the actual work but will organize the procedure so that the Freshman class committees may carry out the work in a more systematic order.

Duffy stated that last year too much of the work was left until the last minute and the work was not properly distributed, placing too much responsibility on a small group of people.

It is the hope of the steering committee that the work can be distributed among the freshmen early enough this year so that original thought can be worked into the plans. May Day is sponsored each year by the Freshman class.

PARRISH INC. PHOTOGRAPHER



Exorbitant
Rates

NEVER GUARANTEES WORK

Student Failure Is Attributed To Bull Session

By Charles Mahon

From the University of Massachusetts comes a report that might benefit the students of RPI. The officials of the U. of M. have long realized that a great majority of the students who "flunked out" did so not because they lacked brain power, but because they had formed poor study habits.

Hugh P. Baker, dean of the U. of M., decided to remedy the situation. Upon investigation, he found that an old college institution, the bull session, was instrumental in causing the students to "flunk". He also found that mid-semester examinations weeded out the scholastic weaklings.

Since the bull-session was the main cause of poor work, why not make it work for the student instead of against him? A series of eight bull-sessions telling the student how to improve his study habits, budget his time, and improve his reading skill has been scheduled in the various U. of M's freshmen dormitories.

Overdue Books Show Reduction

The number of overdue books in the library has been reduced this year, according to Miss Rosamond McCannless, RPI librarian.

This is attributed to a new system begun by the library last year of making two-week books fall due on Tuesdays and Fridays only.

Students who take out books on Saturdays and Wednesdays actually have two extra days in addition to the usual two weeks to return books.

Canterbury Club Chooses New Representatives

The Canterbury club elected SGA and Inter-Faith council representatives at a meeting October 8.

Ruth Waterman was elected SGA representative; Joe Ewing, alternate representative; and Ann Mennin and Richard Lester, new representatives to the Inter-Faith council.

A discussion on topics decided by members at an earlier meeting was conducted by President Florence Read.

A social hour was held after the club's regular business meeting.

RPI had its beginning in 1917 when the Richmond School of Social Work and Public Health was established by a board of private citizens.

REC Students Learn By Doing

Students majoring in Recreational Leadership at RPI are learning by "doing", according to Mrs. Lois Washer, head of the department.

According to Mrs. Washer these students are participating in the recreation of twenty-one different organizations in and around Richmond. Included in the organizations assisted by students are: YMCA, YWCA, William Byrd Community House, Richmond and Hopewell Recreation Departments, Bon Air Girl's school, Jewish Community center, Crippled Childrens Hospital, and Medical College of Virginia.

Each student is responsible for his own program, both in drafting it, and putting it into effect. However, this group meets weekly for joint discussion and planning.

In 1946, RPI became affiliated with The Virginia Polytechnic Institute which established a branch of its engineering division on the RPI campus.

BEACON

SELF-SERVICE LAUNDRY, INC.

FLUFF DRIERS
DRY CLEANING
FINISHED LAUNDRY

DIAL 6-9213

IT'S PLEASANT
TO PLEASE YOU



SHOP At The
PROFESSIONAL
PHARMACY
SODA FOUNTAIN & DRUGS
Dial 5-3289



*Eat
at*

ETON'S

938 W. GRACE

QUICK - DEPENDABLE
**CLEANING
AND
PRESSING**

**BON-TON
CLEANERS**

918 W. BROAD ST. - DIAL 2-7881

BELVIDERE INN

THE  BEST

Delicatessen Sandwiches
Television Entertainment


601 W GRACE STREET

FINER CLEANING

Puritan Cleaners

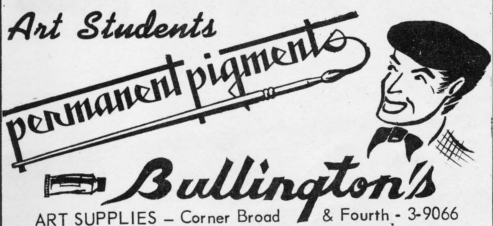
826 W. BROAD ST. DIAL 3-1667

Fancy Cleaners, Tailors & Dyers

GRILLED SANDWICHES

BOOK RPI STORE



Art Students
permanent pigments

Bullington's

ART SUPPLIES - Corner Broad & Fourth - 3-9066



Delicious Food

Julia's
RESTAURANT

801 W BROAD ST.

PHONE 84-1976

FORMAL WEAR TO RENT

Also Accessories

TUXEDO-----
Includes Shirt, Tie
Suspenders, Shirt Studs
and Cufflinks

FULL DRESS-----
Includes White Vest, Shirt,
Tie, Suspenders, Studs
and Cufflinks

FORMAL DRESS SHOES---\$1.50

Famous Make Latest Style

MODERN TAILORS

House of Formals

224 N. 8th St. (opp. King Carter Hotel) Dial 2-0533

Boosters Offer Rides To The RPI-NC Game

Buses and cars will be furnished by the Alumni Booster club this Friday for the transportation of all students who wish to see the RPI-N.C. State soccer game. Eddie Martin, president, said. The game, to be held at McGuire field, will begin at 3:30 p.m. Time of departure of the buses is now posted on bulletin boards.

Tonight from 7:00 to 7:30 p.m. the Booster club will cooperate with the Monogram club in giving a pep rally with a dance to follow on the East lawn that will last until 8:30. (Tonight is opening night for the drama departments production of the "Glass Menagerie" beginning at 8:30 in the Gym).

At the club's last meeting all the house presidents or their representatives were assembled. This was part of the Alumni Booster club's campaign for more active memberships. (All students are automatically members of

the Booster club). Dormitories will compete in this campaign drive. Two prizes are to be given. One to a fifty-student, or-more-dorm, and one to a fifty-student-or-less dorm. The prizes are record albums.

"All who were present at the meeting apparently were enthusiastic over the purpose and the activities that are to be planned", Martin said.

The progress of each dorm is to be posted weekly on bulletin boards. The drive will last through December.

Dormitory representatives and number of students in dorms are: 312 Shafer St., Mary

Lou Crowder and Joan Wraton, no.: 42; 214 Shafer House, Charlotte Holmes, Ginger Abraham, and Pat Mabry, no.:30; 902 Park ave., Lois Cooper and Dean Huff, no.: 48; 828 Park ave., Sarah Phipps and Carolyn Cooksey, no.: 44; 820 Park ave., Ann Duncan, Jo Sarrait and Mindy Chovitz, no.: 76; 827 Franklin st., Jean Mayes and Lyn Griffin, No.:

95.

Also, 821 Franklin st., Pat Payne, Barbara Barton, and Jo Vemon, No.: 43; 819 Franklin, Mary Ann Meade and Jean DeJarrattee, no.: 37; (Men's Dorm) 712 Franklin, Arnold Lucas, no.: 106.

YEARBOOK (from p. 1)

know in advance exactly how much they will have to operate

NORTH AMERICA ASSURANCE SOCIETY OF VA.

HOSPITALIZATION, ACCIDENT, POLIO

"FOR INFORMATION CALL"5-8655

MAIN & BRUNSWICK

the yearbook on.

Informal snapshots of life at RPI are needed for the Wigwam. Anyone interested in supplying pictures should contact Jack Roach, editor-in-chief, or Carolyn Crutchfield, photography editor.

BANNER BUYS IN...
SCHOOL SUPPLIES

RAY'S
FIVE AND DIME
927 W GRACE ST.

Play Opens

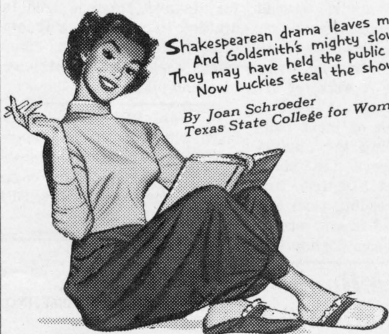
from p. 1

appearance on the RPI stage in the role of "the gentleman caller". A native of Boston, Prodan spent his freshman year at RPI, his sophomore year at Allegheny College, and received his degree from UCLA. His interest in the theater is directed toward playwriting. He has written a three act play, entitled "My Brother's Sister", and a group of one-acts, called "Triplet", which will be produced here on February 22, 23, and 24.

Tickets for "The Glass Menagerie" may be obtained at the SGA office or at the boxoffice. Student rates will prevail again this year.

Shakespearean drama leaves me cold;
And Goldsmith's mighty slow;
They may have held the public then—
Now Luckies steal the show!

By Joan Schroeder
Texas State College for Women



I took a course in Chemistry;
I tried a new reaction;
I lit a Lucky with a match
And got real satisfaction!

By Ronnie Friedman
Columbia University



Be Happy-Go Lucky!

The campus bells ring out the airs
That all the students like,
But the air the campus belles prefer
Is filled with Lucky Strike!

By Morton Greenberg
UCLA



Enjoy your cigarette! Enjoy truly fine tobacco that combines both perfect mildness and rich taste in one great cigarette - Lucky Strike!

Perfect mildness? You bet. Scientific tests, confirmed by three independent consulting laboratories, prove that Lucky Strike is milder than any other principal brand. Rich taste? Yes, the full, rich taste of truly fine tobacco.

Only fine tobacco gives you both real mildness and rich taste. And Lucky Strike means fine tobacco. So enjoy the happy blending that combines perfect mildness with a rich, true tobacco taste. Be Happy—Go Lucky!

**L.S./M.F.T.-Lucky Strike
Means Fine Tobacco**

COPR., THE AMERICAN TOBACCO COMPANY

SAUER'S
PURE
VANILLA
EXTRACT



SPORTS

WAA Revises Present Point System For Varsity And Intramural Awards

The Sports Go'Round

By Jim Fisher

Devils Open Home Stand

The luckless Green Devils go before the homefolk Friday when they meet N.C. State at 3:30. The wolfpack will inaugurate a three game home stand by the Devils. Virginia and Washington and Lee follow the 'pack into the local's camp on November 13 and 22 respectively.

Battered in four starts played in their foe's backyards, the booters will be playing the home team role for the first time this season and will welcome the familiar surroundings of McGuire Field.

The change in setting has not offset the favorite and underdog pickings however. Observers have the North State visitors as five points better than the Green.

Oddsmakers Too Generous

These oddsmakers could be a little too generous. From this corner three points looks like the maximum.

The fact that it takes a Senior or either a vivid memory on the part of a Junior to relate the Devils last triumph is true. They had victory within their grasp several times last season but their grip wasn't firm enough. A couple of weeks ago they should have made a mark in the "won column" against Roanoke. After leading for three quarters, penalty kicks cost them five points and the Maroons' 7-2 win was practically a gift.

Spirit Is High

When a team's record is down and their spirit is up they are hard to beat. The Devil's record is practically buried, but their spirit is at a new high and so contagious that hitherto uninterested students have become avid followers of RPI soccer.

It isn't likely that the Green Devils will uproot the invading 'Pack Friday but its very likely that local students will see a well contested game of soccer.

The proposed revision of the point system for awarding varsity and intramural honors was approved and passed by the Woman's Athletic Association Council on October 26.

Formerly the constitution required a sum of 150 points for each varsity activity to entitle the participant to an award. The revision changes the total number of points for each activity.

To be eligible for a hockey award the player has to obtain 150 points. Because more games are played in basketball, the total number of points will be changed to 200. In tennis 75 points will be required. However, these tennis points may be changed according to the number of games played.

The total sum of 300 points is changed to 200 points in three intramural activities to entitle the player to an intramural award. These points may be carried over from one year to another.

For the first 200 points, the intramural award will be a rain cap with "WAA" on it. For an additional 150 points the player will receive a pin initialed with "RPI". The participant will be awarded an RPI letter with the shield and bar for the next 150 points obtained.

SPORTS CALENDAR

November 9th

Hockey team vs Petersburg Club - Parker Field - 4:00 pm
Monogram Club Meeting - Ad B - 1:30 pm

November 10th

RPI vs NC State - here

November 11th

Hockey team vs Richmond Club - Parker Field

November 13th

Intramurals - Gym - 6:00 pm

November 14th

Intramurals - Gym - 6:00 pm

November 15th

Intramurals - Gym - 6:00 pm

November 16th

Intramurals - Gym - 6:00 pm

ALL SAINTS

Youth League 6 PM Sunday

Holy Communion 9 AM Sunday

Morning Prayer 11 AM Sunday

EPISCOPAL CHURCH

316 W FRANKLIN

Old Dominion Grid Review

By Charlie Decker

The nation's number one team, SMU, went down to its first defeat this past week by a good Texas team 23 to 20. Since Texas now has an inside track to the Cotton bowl, wouldn't it be nice if Oklahoma accepted a bid to play the Longhorns for a second time. Texas' only loss was suffered by Oklahoma 14 to 13. While we are still along this wishful thinking idea, why not SMU re-matched against Ohio State in the Sugar Bowl on New Years Day. The Buckeyes would be ineligible to return to the Rose Bowl.

Army, California and Oklahoma all escaped unscathed, although there were many anxious moments for both California and Oklahoma.

The big game of the week brings together two of the leading candidates for the Big Ten title, Ohio State against Wisconsin. The Buckeyes are considered in many quarters as being the strongest team in the nation. Wisconsin, on the other hand is still in the running for a Rose Bowl bid, along with Illinois.

In the Old Dominion, Virginia, which is conceded to be the strongest team in the state, (many prefer W&L), has its work cut out for them in their next three games. They meet, following W&M, Tulane and then North (minus Choc-Choo) Carolina. If the Cavaliers still have any Bowl aspirations, they must get by these three teams.

(Continued on p. 6)

Green Opens Home Season Against Wolfpack Friday

England Invades Hockey Domain Of Local Team

By Betty Schmitz

"Stand Up! You can't play hockey doubled up like monkeys."

"Run after the ball--your're stubborn as bulls."

Anyone near Hotchkiss field last Thursday could hear a voice, touched with an English accent, ringing with such expressions.

It was the voice of Miss Constance Applebee, giving the RPI and John Marshall hockey teams hints on the correct way of playing hockey.

The RPI team was somewhat consoled when she stopped shouting for a minute and said, "You have lots of talent," and then added, "You lack the guts to be a good hockey team."

Miss Applebee's life--all 72 years of it--has been devoted to hockey. During the fall she spends her time mostly in Virginia helping hockey players improve their skill.

The English hockey whiz originally brought the game to the United States and taught it at one of the eastern colleges. She then proceeded through the country with hockey sticks and balls, introducing the game at different schools and colleges.

Miss Applebee coaches at the Applebee Hockey camp at Mount Pocono, Pennsylvania during the last week in August and the first two weeks in September. After the fall season she returns to England, where she is engaged in welfare work.

The high-spirited but resourceless Green Devils face N.C. State's southern conference Wolfpack in their first home game Friday afternoon at McGuire Field. Game time is 3:30.


Winless in four outings thus far the Devils have an experienced and well-manned opponent in the Tarheel contingent. The 'Pack has won two, lost one, and tied one in the '50 season play. Friday's game will be the second between the two schools. State grabbed a 4 to 1 win last year in Raleigh.

The 'Pack is heavily favored to increase their margin over the injury-riddled Green in the game Friday. Hampered by the loss of Joe Gehris, who was injured in the Carolina game, the Devils have three starters on the doubtful list.

Bill Smith, whose long kicks are a vital part of the local's defense, has a pulled muscle. Bob Kimpleton is nursing a bruised instep and Bill Pritchett's sprained ankle may keep him sidelined. All three were injured in the Virginia game last week. No replacements have been named for the trio as yet and it is probable that they will see limited action against the Wolfpack.

Cavaliers Here Monday

Virginia's Cavaliers, one time winners over the Green already this season, will play a return game at McGuire Field Monday. "The Charlottesville aggregate rapped the Devils 7 to 0 on their home field November 2.



Artist goes mad

FOR JOY, BECAUSE HE BOUGHT . . .

WINSOR NEWTON
WATER COLORS

COLD, HOT AND
ROUGH PRESS
WATER COLOR BOARD
BRUSHES * MATERIAL

at
GLIDDEN CO.
117 W. Broad St.



Schwarzchild Originals Mean So Much More.

So much more beauty, more delicate craftsmanship, more proud enjoyment, more and deeper appreciation. Fine jewels and the house of Schwarzchild go together.

SCHWARZCHILD Brothers
Broad at Second

Compliments of

Richmond Barber School, Inc.

721 W. Broad St.

GRACE ST. LAUNDRAMAT

414 W. Grace St.

HALF HOUR LAUNDRY
SELF SERVICE

• QUICKER

• CLEANER

• CHEAPER

DIAL 7-9484

Open 8 AM to 8:30 PM

Sat. 8 AM to 5 PM

Drying Service Available

Girls Bow 4 to 0 To Bridgewater For Third Loss

The RPI hockey team went to Bridgewater college to be overpowered 4 to 0 last Thursday. This is their third defeat in as many starts.

The Bridgewater team held the RPI girls back allowing them to come close to scoring only twice. The home team scored 2 points in the first half and 2 in the second.

The line up included: Gina Smith as right wing; Patsy Anderson, right inner; Gwen Ginn, center forward; Bet Simpson, left inner; Mary Hut-ton, left wing; Charlotte Wallar

right halfback; Virginia Dare Gardener, center halfback; Joyce Walsh, left halfback; Grace Dorey, right fullback; Jane Hayden, left fullback; and Mary Anne Rogers, goal keeper.

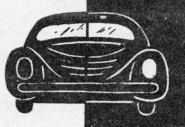
RPI hockey team will play the Richmond club, Saturday at Parkers field.

VARSITY BASKETBALL PRACTICE
EVERY EVENING AT 2:30
CENTRAL YMCA HARDWOOD

LUNDIN'S JEWELERS
WATCHMAKERS
SPECIAL ORDER WORK
DIAMONDS
211 EAST GRACE ST.
DIAL 3-1413

Modern Dancers To Be In Recital

The advanced modern dance class and the folkdance class will dance at a meeting of the Pioneer Woman's group Monday November 13.



ESSO SERVICE STATION

GRACE & LAUREL

OLD DOMINION (from p. 1)
Games, Nov. 11
Virginia to squeeze past W&M
The Cavaliers have a much more impressive record than

the Indians, but with a renewal of such intense rivals as these, it promises to be close. Georgia Tech to smash VMI
Just a matter of too much against too little.

CLASS

RINGS & PINS

CHELF'S DRUG CO.

YOUR CAMPUS DRUGSTORE

"EASIEST TEST IN THE BOOK"

SAYS JOHN E. MITCHELL
PURDUE '51

COMPARE CHESTERFIELD WITH ANY OTHER CIGARETTE!

BEFORE YOU SMOKE THEM

...you can tell Chesterfields will smoke milder, because tobaccos that smell milder smoke milder.

AFTER YOU SMOKE THEM

...you have no unpleasant after-taste.

WHILE YOU SMOKE THEM you get more pleasure than any other cigarette can give you—that's why millions of smokers say: **THEY SATISFY.**

OPEN 'EM

SMELL 'EM

SMOKE 'EM

PHOTOS TAKEN ON CAMPUS

CHESTERFIELD

LEADING SELLER IN AMERICA'S COLLEGES