

## New Accrediting Group Grants Approval To RPI

Word was received recently that RPI has been accredited by the National Commission on Accrediting, according to a statement released last week by Dean Hibbs.

RPI has for many years been on the list of institutions approved by the American Association of Universities, and representatives of the AAU have often visited here for inspection purposes. This association, however, was discontinued last year and has now been replaced by the National Commission on Accrediting.

The new list formulated by the commission accredits RPI as follows: "College of William and Mary, Williamsburg, Virginia, including the Richmond Professional Institute, Richmond, Virginia and the Norfolk Division of the College of William and Mary, Norfolk, Virginia."

There are no records in the dean's office of any student having been refused admission to any school on the basis of attendance at RPI. Dean Hibbs commented that students who apply for transfer to a distant college should stipulate that RPI is a part of the College of William and Mary to avoid difficulty.

As the highest accrediting organization in the United States, the new commission

(Continued on p. 3)

## Music Majors Plan Recital December 3

Dick Mitchell, tenor, and Frances Tiller, soprano, will give a joint recital at the Pine Street Baptist Church, Sunday, December 3, at 3 p.m.

Mr. Mitchell and Miss Tiller, juniors at RPI will be accompanied by Mary Ann Settle, and Brooks Fryer. The public is invited to attend.

On Monday, December 4, at Chester, Virginia, Florace Lockwood, Dick Mitchell, and Frances Tiller, will also give a recital. Lockwood, violists, Mitchell, tenor, and Tiller, soprano, will give this program for the benefit of the Chesterfield Woman's club. They will be accompanied by Maurine Synan.

## Sport Briefs

### HOCKEY SCHOLARSHIP AWARDED TO MISS SIMPSON

The 1950 hockey scholarship to the Applebee Hockey Camp was awarded to Miss Elizabeth Ann Aimpson for her "natural ability" in hockey.

Details on page 5

## Three Seniors To Vie For Title In May Queen Voting Next Week

### "Here We Are" Is Title Of Boosters' Program

"Here We Are" is the unique title of the Booster Club's new radio program. This program, sponsored by the club, will begin this Saturday afternoon over station WXGL. The club will have this regular program every Saturday. The purpose of the program is to introduce to the public representatives, both faculty and students, of different departments. The students who will appear will be chosen on outstanding ability. The program will open with the Glee Club singing the Alma Mater. This will be the theme song for all future programs.

Mr. R. C. Watkins, Jr., of the School of Drama, will be the permanent script writer. He will advise and supervise the productions. An instructor in drama Watkins has had experience in radio and stage production.

The program this Saturday will present faculty members from the recreation and physical education departments. They are: Mrs. Lois Washer, from recreation and Mr. Edward Allen, from the physical education department.

Every week a sports review will be presented. Eddie Martin will be the permanent sports commentator.

Chosen this week for his outstanding achievements in modern dancing is John H. Hurdle. Hurdle appeared in such Broadway productions as "Annie Get Your Gun" and "Call Me Mister." He is a freshman in the School of Drama.

The program will also feature a scene from Shakespeare's "Romeo and Juliet." Drama students will participate in this skit. This will be a regular feature of the program every week. The skits will be arranged and directed by Watkins.

Imogene Cowan and deVeaus will be permanent announcers.

"Here We Are" may be heard every Saturday afternoon over WXGL. The hour of the program will be announced later.

## Yule Job Leaves Granted Students With B Average

RPI students who wish to leave school to work during the Christmas season may get off one week before the official holiday begins if they have maintained a B average. This was announced by Dr. Margaret Johnson, registrar.

School will terminate for Christmas on the 21 of this month. Classes will continue until 5 p.m. of this date.

Students with jobs must get written permission from their advisors and bring the permission slip to Dr. Johnson before they leave school.

The three candidates for the May Queen election, which will be held on December 18 and 19, are Gerry Wensing, Charlotte Holmes, and Mary Ann Heller, it was announced by Senior Class President Carson Overton.

As is customary, the candidate polling the greatest number of votes will reign as May Queen, with the runner-up as Maid of Honor. Only seniors are eligible to run for this title.

The entire student body will vote in the election. Voting will take place in the SGA office, the first floor in the rear entrance of the VPI building, the gallery of the gym, and the first floor foyer of the music building.

The election will follow the usual procedures with the Board of Elections of the SGA handling the rules and details of the voting.

Miss Wensing, hails from Havertown, Pa. and is a sociology major. Miss Holmes, who is the only Virginia representative, is from Bowling Green and is majoring in pre-social work. Miss Heller, who calls Union Mills, N. C. her home, is also majoring in pre-social work.

### FEBRUARY DROPOUTS NOTIFY REGISTRAR

All students who are not returning to school in February are asked to notify the registrar's office as soon as possible.

Students who are uncertain about returning are requested to tell the registrar of this also. When they find out that they are definitely returning, they are asked to notify the registrar.

The first semester is scheduled to end on January 31, 1951.

## School Of Dramatic Art Schedules 'The Madwoman Of Chaillot' Next

"The Madwoman of Chaillot", the school of dramatic art's second major production of the year, will open Wednesday, December 13, and continue through Friday at 8:30 p.m. in the Gymnasium Playhouse.

The timeless fantasy, written by the French playwright Jean Giraudoux, went into rehearsal recently with Jacqueline Farham (Mrs. Raymond Hodges in private life) in the title role. This will be her first appearance in an RPI production, having had professional experience with the Essex Players at Lake Champlain, the Cobweb Players at Factoryville, Pa., and the Green Mountain Playhouse in Middlebury, Vt. Added to this has been local appearances with the Childrens Theatre and

the old Richmond Theatre.

Termed also an allegorical comedy, the play presents, through its satire, sharp comments on modern society. The author has made no pretense of showing true-to-life situations but presents evil, as he sees it, through fantasy and the eyes of the "madwoman". Its timelessness and universal situations and locale brings it close to a classic, according to many critics.

"The Madwoman of Chaillot" was presented for the first time in Paris in 1945 as "La Folle de Chaillot". An English adaptation was brought to Broadway, where it received the New York drama critics' award for the best new play by a foreign author presented in New York during 1948-49.

Other madwomen of Chaillot will be played here by Ann Hudson Goedecke, Imogene Cowan, and Barbara Evans.

Further members of the cast are: Roy Carter, Catherine Marlowe Stampalia, George Harris, James Enderly, Don Hermes, Serene Smith, Patricia Caldwell, John Hurdle, Marilyn Comess, William Snider. Also, Arthur Greene, Charles Cappleman, Donald Melvin, Arnold Hyman, de Shields Fisher, Vivian Trestman, Mary Lewis, and Eleanor MacOnie.

Director Raymond Hodges will return to presentational style staging for this production. Two sets are being designed for the gymnasium stage by Mr. Robert Watkins.

Costumes will be under the (Continued on p. 2)

## Deadline Extended For Payments Of Yearbook Through December 15

Carson Overton, business manager of the 1951 Wigwam, will be in the SGA office every day except Saturday until December 10 for the purpose of collecting all final payments for the annual.

The original deadline of

November 29 has been thus extended for the convenience of those students who have so far been unable to finish paying for this year's edition.

The hours during which Overton will be on duty are posted at the SGA office.

## 7 B Fight Needs Support

Each Christmas season is accompanied by the annual sale of Christmas Seals, source of revenue that is helping to wage a winning fight against tuberculosis, a disease which is killing one person every eleven minutes.

Eventual eradication of the dreaded disease, which accounts for the deaths of 1000 persons a week, 125 a day, is a distinct possibility. But adequate funds are needed to provide the essential services for early diagnosis, prompt medical treatment, physical and economic rehabilitation of tuberculosis patients, and, on the other hand, education of the man on the street in preventive measures, as well as the importance of these essential services.

As citizens, we have the responsibility to see to it that official appropriating bodies give proper consideration to the needs in our communities for adequate hospitals, clinics, public health nurses, case-finding facilities, and rehabilitation. Virginia's General Assembly has provided funds for a 150-bed tuberculosis surgical-diagnostic teaching unit at the Medical College of Virginia in Richmond, but still another unit of the same proportions is direly needed in Virginia to answer the definite requirement.

A communicable disease, tuberculosis, kills more than 40,000 Americans each year. It kills more people between the ages of 15 and 35 than any other known disease. There were 975 deaths from all forms of tuberculosis in Virginia last year; the death toll in Richmond alone was 107.

So when you buy Christmas Seals this year, try to put faces on the figures. Make an "extra" gift.

## The Back Stretch

A semester in college can be described much like a horse racing track. From the start to Thanksgiving is the front stretch with an obstacle in between—mid-term tests. The back stretch is from Thanksgiving to Christmas and the home stretch from Yule until the semester's end.

We've now rounded the Thanksgiving turn on our academic race track and are entering the back stretch. We'll have straight running from here until the Christmas turn, with perhaps one hedge to jump in between. Let us hope our diligent study methods are with us so no one will stumble and fall before we have passed the supreme obstacle in the home stretch. We get there about the last of January.

Sometimes a few students think they can get ahead of the others. They try dodging the obstacles and consequently run onto foul ground. This eliminates them from the running and seldom are they allowed to wait for the next race and start over again. Instead, they are barred from the track.

This is bad for everyone concerned. A better plan is to stay in the straight and narrow. If you can't jump the obstacles then plow right through them. It is better to stay on the track and knock the top off the jump than to go into foul territory where you'll be eliminated. Chances are, though, you can make the jump if you run fast enough and get your pace right. It's not as hard as it may seem.

The important thing is to come in without being declared disqualified half way round. Even if you end the race in last place you'll have the satisfaction of knowing that you stayed on the track and ran to an honorable finish.

## Proscript

Published weekly during the school year EXCEPT DURING HOLIDAYS by students of the Richmond Professional Institute, College of William and Mary Virginia Polytechnic Institute Cooperating.

901 W. Franklin Street, Richmond, Virginia

Entered as second class matter November 12, 1948 at the Post Office at Richmond, Virginia, under the act of Congress of March 3, 1879.

Subscription price \$1 per year

Member: Associated Collegiate Press, First Class Honor Rating  
Virginia Intercollegiate Press Association

EDITOR

Charles H. Stebbins

Managing Editor  
Joyce Rowleson

News Editor  
Edward Brittle

Assistant Managing Editor  
Mindy Chovitz

Assistant News Editor  
Anita Mersel

Society Editor  
Sports Editor  
Advertising Manager  
Assistant Advertising Managers  
Business Manager  
Photographer  
Librarian  
Faculty Advisors

Alice Dooley  
Winston Overton  
Richard Stinnette  
James Dillon and Fred Sloan  
Clarence Goff  
Deane Parrish  
Dorothy Lewis  
Robert Smith and Mrs. D. B. Neely

## Files Set Up To Simplify Exam Worry

The University of Akron is going to make it easy for students to get hold of old tests.

Old tests are exceedingly scarce to obtain around any campus, but the university's math department is setting up a file in their library which will include the examinations of the previous four semesters. This should ease the strain of many students who find that the easiest way to pass a test is to have a copy.

According to the university's newspaper, the head of the math department said that he felt this was a big step toward the creation of better feeling between faculty and student body.

He could have added that this might enhance the relationship between student and parent when the grades come out.

## Parts Open To Students For Opera

Tryouts for the Opera, "Old Maid and the Thief", by Carlo Menotti, are now in progress in the School of Music at RPI.

The opera, to be presented April 27, is sponsored by the Music department and aided by the Drama department. Part-time or full-time students in the school are eligible for parts.

### CLUB CALENDAR

Dec. 7 - O.T. Club, Movie Ad 100, 7:30 p.m.; Booster Club, Gym 21-23, 7:30 p.m.

Dec. 9 - German Club Shipwreck Dance, Gym, 8-11:30 p.m.

Dec. 11 - German Club, Ad 100, 7:30 p.m., Cotillion Club, Ad 200, 7:30 p.m.

Dec. 12 - SGA Executive Committee, Ad 10, 3:00 p.m.; Honor Council, Ad B, 6:30 p.m.; Inter-dorm Council, Cafeteria, 7:30 p.m.

Dec. 13 - Play, Gym, 8:00 p.m.; SGA, Gym 21-23, 7:15 p.m.

### SPANISH CLUB MEETS

The Spanish Club will meet Thursday at 1 p.m. in Ad. 2C, President Bill Bourne announced this week.

Bourne said the club is now conducting a drive to increase membership. Any student interested in Spanish is eligible to join.

## Two New Essay Contests Open To RPI Students

### Warner To Lead Opera Groups Annual Messiah

Mr. Allen E. Warner, of the School of Music at RPI, has been asked to conduct the Richmond Opera Group's annual presentation of the "Messiah".

The concert will be held December 12, at the Mosque. This annual presentation is for the benefit of the people of Richmond. There will be no admission fee.

### Presbyterians Hear Speaker On Criticism

Dr. Binger, pastor of the Grace Covenant Presbyterian Church, spoke to the Westminster Fellowship on November 28, on "Learning How To Take Criticism."

The Fellowship's next meeting will be on December 12 when a Christmas program will be presented. Speaker for the meeting will be Rev. Dave Currie, director of campus life of the Presbyterian church. Mr. Currie is an outstanding speaker and is in great demand at many of the leading colleges and universities throughout the south. His topic at Westminster Fellowship will be: "All I Want For Christmas."

A movie will also be shown at this meeting titled: "When the Littlest Camel Kneels."

### Rec Club Plans Christmas Party At McGuire's

The Recreation club will give a Christmas party for the McGuire patients at McGuire hospital December 11 at 7:30 p.m., Donald Robertson, president announced.

All students interested in making this trip will meet in front of the Ad building at 6:30. Transportation will be furnished by the hospital.

Two new essay contests have been announced and are opened to students at RPI.

The Virginia League for Planned Parenthood, Inc. has announced a contest for students attending Virginia colleges and universities. The subject of this 2000 word essay is "Child Welfare and Planned Parenthood". The contest closes May 15, 1951.

The first award is \$100. The teacher sponsoring the first prize winner will also receive \$25.

The topic covers such a broad field that students may wish to limit their papers to a specific field such as economic or health factors.

Three new writing awards of \$250 each, will be given this spring by the International Circulation Managers' Association. These awards are open to undergraduates regularly enrolled in their junior and senior years of college.

The IMCA will also award one \$750 scholarship for post graduate work in circulation management.

Entrants for the \$250 awards must write a 1000 word thesis on any of the following stories: 1) How Newspaperboy Training Helped Me go To College, 2) Job Opportunities In Newspaper Circulation, 3) How a Newspaper Circulation Department Benefits the Community.

Complete contest rules and bibliographies may be obtained from the Journalism department in Ad M.

"MADWOMAN" (from p. 1) supervision of Miss Phyllis Kendall. Technical director is Mr. Ros Miller, and Vivian Trestant is assistant to Mr. Hodges.

Tickets may be obtained at the SGA office or at the box office. Student rates will be in effect.

### OT's MEET TONIGHT

The OT club will meet December 7 at 7 p.m. in Ad. 100. There will be an Occupational Therapy demonstration by staff members of McGuire Veteran's Hospital.

## Social Light

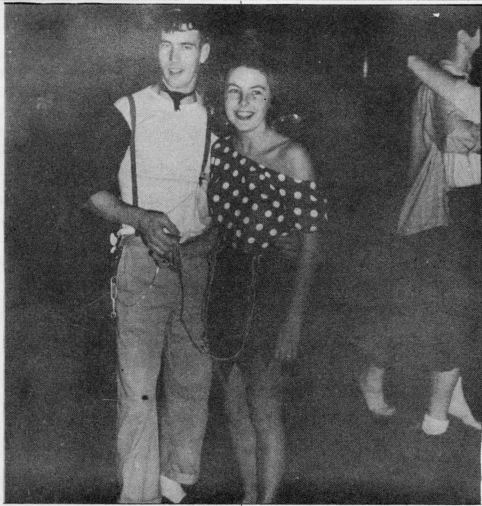
### FINE - LEOPOLD

Miss Frances Diance Fine, daughter of Mr. and Mrs. Henry Fine, was married to Wallace Harvey Leopold, son of Mrs. Dora Leopold, and that late Albert Leopold, of Brooklyn, N.Y., November 19, in Temple Beth-El.

Upon their return from a wedding trip, Mr. and Mrs. Leopold will live in Richmond. Mrs. Leopold will return to RPI to continue her studies in the recreation department.

Social items of interest to RPI students are welcome. It is requested they be given to Miss Alice Dooley, society editor.





Bob Tester and Mana Anderson at the Sadie Hawkins dance in the Gym on November 17.

Intermission entertainment featured at the SGA formal November 18.

— Photos by Deane Parrish

## Smoking Now Permissible During Meals In Cafeteria

**LUNDIN'S JEWELERS**  
WATCHMAKERS  
SPECIAL ORDER WORK  
DIAMONDS  
211 EAST GRACE ST.  
DIAL 3-1413

A motion made to abolish no smoking signs and ordinances in the school cafeteria was approved by a 25 to 1 vote at the Student Government Association meeting on November 29.

This action was brought about as a result of a recommendation passed by the council on November 15 requesting that the authority of the no smoking rules in the cafeteria be investigated.

In explaining this move, SGA president Baxter Duffy stated, "Last year I recall that Student Council engaged in a heated discussion on the controversial matter of whether or not students of RPI could smoke in their cafeteria. The matter was put to a vote and though no written record remains, I remember that on a close vote, no smoking was permitted in the dining hall. However, the council failed to take this matter to the administration and receive an official school administrative approval of this act."

**SHOP At The**  
**PROFESSIONAL PHARMACY**  
SODA FOUNTAIN & DRUGS  
Dial 5-3289

**HIGH**  
IN VALUE  
► KRYLON PLASTIC SPRAY  
► POSTER COLORS  
► EXCELLENT QUALITY PAPER FOR TRACING LAYOUT SKETCHING CHARCOAL PASTEL  
GLIDDEN CO.  
117  
W. BROAD



*Eat at*

**ETON'S**  
938 W. GRACE



**FINER CLEANING**

**Puritan Cleaners**

826 W. BROAD ST. DIAL 3-1667

Fancy Cleaners, Tailors & Dyers

## Senior Fitting Dates Set

The schedule for the fitting of caps and gowns for seniors has been announced by Carson Overton, senior class president. On Tuesdays and Thursdays they may be obtained from 8:00 to 9:00 a.m. and from 1:00 to 2:00 p.m. Fitting hours on Saturday are 8 to 9 and 10 to 12.

Overton announced that these fittings started December 5 and will continue until further notice. Room 34 has been designated as the fitting room and Mrs. Ethel Cottingham is in charge of the project. Assisting her is a committee of which Mary Anne Holler is chairman.

Seniors are requested to pay their \$4 rental fee to the cashier and bring their receipts along with them when they come to be fitted. Veterans should see Mrs. Gladys Tedder, veterans coordinator, before they are fitted. Overton urges that seniors comply with the hours designated.

Junior marshalls who have been elected by the senior class to serve at formal convocations this year are Barbara Cohn, Joan Kroese, Damaris Drake, Drury Lyle, Brooks Traweek and Ronald Feaster.

At a class meeting held November 30 it was voted to reopen the date for payment of class dues. Previously November 15 had been set as the closing date for payment of class dues. The closing date has now been set for February 1. Concerning this Overton stated, "Approximately 50 persons have paid their dues to date. We feel that out of 280 members of the senior class, surely there are more who wish to pay their dues and participate in the activities of the senior class. It should be brought to the attention of all seniors that unless they pay their class dues, they are unable to attend either the junior-senior

prom or the May Day dance. Therefore, we urge all seniors to pay their dues by this deadline, so that they won't feel left out of the activities of their final year of college."

At this meeting it was also decided to hold off the election of class sweetheart and attendant to the May Court until after the May Queen election so that losers in the May Queen election might have a chance to become the sweetheart or attendant. Election of these two girls will be held at a special meeting for that purpose to be held January 11.

A committee has been formed with Phil Pafford as chairman to investigate the situation on a moment to be given the school by the class of 1951. In recommending this, Overton said, "In years gone by the graduating classes of RPI as a whole have contributed little of permanent value to the school. We of the senior class of '51 feel that we would like to leave something in our name to the future classes to remember us by. Therefore, we have instigated a committee to investigate the possibilities of donating to the school a sign of stone or bronze."

## NEW ACCREDITING

(from p. 1)  
takes precedence over regional associations, which have lower requirements for approval. RPI is accredited by the Southern Association of Colleges through the College of William and Mary of which RPI is a part.

The school is further approved by the American Society of Clinical Pathologists for laboratory technology courses in affiliation with the Medical College of Virginia and by the American Medical Association for courses in physical therapy, and laboratory technology.

RPI is also a member of the following professional associations: American Association of Schools of Social Work, American Association of Psychiatric Social Work, American Occupational Therapy Association, American Physical Therapy Association, American Collegiate Retailing Association, and the National Association of Schools of Music.

The first courses in dramatic art to carry college credit in any southern college were offered at RPI in 1920.

**RADIO & TELEVISION**  
**SALES AND SERVICE**

One Day Service  
Free Pick-up and Delivery  
Ph. 84-6258 ----- 310 Laurel



**ESSO SERVICE STATION**  
**GRACE & LAUREL**

*Meet Me For*  
**Lunch**  
at

**GIBRALL'S**  
RESTAURANT

**BELVIDERE INN**



THE BEST

Delicatessen Sandwiches  
Television Entertainment  
601 W GRACE STREET

**ALL SAINTS**

Youth League 6 PM Sunday

Holy Communion 9 AM Sunday

Morning Prayer 11 AM Sunday

**EPISCOPAL CHURCH**

316 W FRANKLIN

**Richmond Dairy Company**

MILK

ICE CREAM

SERVING RICHMOND FOR 60 YEARS

## RPI Student Will Direct MCV Chorus

Raleigh Wells, a junior in the school of music at RPI, has been selected over a number of applicants, to direct the chorus at the Medical College of Virginia.

The chorus consists of about 40 men and women, who are working at the college for various degrees.

Wells, because of his interest in choral work, has been chosen for a number of important positions, one being director of the May Day festival chorus last year.

Before coming to RPI, Wells was enrolled in Smithfield College, and had also attended Augusta Military Academy. Upon entering RPI, he began working for his BME degree.

## Students Swallow Way To Fame With Goldfish

Who said college students have lost their colorful ways? Two residents of the men's dormitory recently sought to emblazon their names beside those of other collegiate greats.

The two heroes, James Hubbard and James Ring, revived lost art when they swallowed between them five live, yes, five living goldfish!

The whole stunt came about when Hubbard read of a Harvard university student of the 1930's who "swallowed" his way to the world's record when he consumed a grand total of 43 goldfish at one sitting. Hubbard became interested, and influenced Jim Ring to join him in a swallowing bout. Hubbard managed to down three of the "living ornaments" and Ring two, to the amazement and enjoyment of their on-lookers.

While Hubbard and Ring did not come close to the record, nor did they attempt to, they enjoy a unique distinction which stands as a challenge

Compliments of

Richmond Barber School, Inc.

721 W. Broad St.

to anyone interested in dethroning The Goldfish Kings of RPI.

## SGA Office Closes Soon For Soliciting

Baxter Duffy, SGA president, has announced that the Student Government office will not be open later in the year for the purpose of soliciting class dues.

According to Duffy, it has been a practice in the past for classes to collect delinquent dues just before May Day week-end and the SGA office has been flooded with students wishing to pay their back dues in order that they might attend the May Day dance.

"In order to avoid confusion this year, the collection of late dues will not be permitted in the SGA office; therefore, I urge all students to pay their dues before the deadline dates set by their classes. It is only in this way that they will be permitted to attend the May Day dance," Duffy stated. He added that an early collection of dues would benefit the classes in planning their financial projects for the year.

## Alumni Form New Chapter In D.C. Area

A second chapter, one composed of former RPI students in the Washington, D.C. area, has been formed as part of the Alumni association, Miss Lola M. Shiflett, executive secretary, said today.

The organizational meeting of the new chapter was held November 14 near Washington. Twenty-two alumni were present Miss Shiflett reported. Previous to the Washington chapter's organization, the Richmond chapter was the only one in existence. It was formed the past June 8 and was active in promoting the first Homecoming in October.

The Washington alumni elected as president for the coming year, Miss Doris Firebaugh. Other officers are Mickey Millins, vice-president; June Chandler, secretary; and David Avery, treasurer.

The group decided to sponsor four social events a year with the first of these scheduled for February, 1951. The chapter hopes to interest any winter graduates from the

area in joining the group, Miss Shiflett said.

Plans have been underway for several months to organize chapters in the Roanoke and Norfolk areas and progress on these groups has been "encouraging," Miss Shiflett said.

The Honor System was established at the College of William and Mary in 1779.

## CHESTERFIELD TEA ROOM

Across from the Administration Building

**WELCOME**

RPI Students

and

Faculty

Breakfast 7:20 - 9

Lunch 12 - 1:30

Dinner 5:15 - 7:30



**RAY'S**

FIVE AND DIME

927 W GRACE ST.

QUICK - DEPENDABLE  
**CLEANING  
AND  
PRESSING**

**BON-TON  
CLEANERS**

918 W. BROAD ST. - DIAL 2-7881



*Art Students*  
**permanent pigments**  
*Bullington's*  
ART SUPPLIES - Corner Broad & Fourth - 3-9066

**CLASS**

**RINGS & PINS**

**CHELF'S DRUG CO.**

YOUR CAMPUS DRUGSTORE

## February Graduates To Meet

The next meeting of the February graduates will be held on Wednesday, December 13, in the rear library at 4 p.m. it was announced by Ralph Nagler, chairman of the February graduates.

Nagler stated that all money for invitations and calling cards must be in by December 8, and all money for the February graduates party must be in by December 20. Money may be turned in to Ralph Nagler or Virginia Eubank.

## Kloss Elected Frosh Leader

The Collegiate party of the Freshman class walked off with the majority of votes in the November 27 elections. One member of the Panda party, Jean Dickerson, was elected to the slate.

The successful candidates are: President, Johnny Kloss; Vice-President, Anna M. Johnson; Treasurer, Bruce Donlon; Secretary, Jean Dickerson, and SGA Representative, Vernon Carpenter.



wonderful, woodsy **Woodhue**

**Faberge's** fragrance

for falling in love

featured in "THREE HUSBANDS"

a United Artists comedy

*Thalhimer's*





# Sports Go 'Round

By Jim Fisher

The curtain goes up on the home half of 1950-51 basketball Friday night when RPI's third court edition entertains the Union Theological Seminary at the YMCA.

Already underway, the current campaign should prove to be the most ambitious undertaking in Green Devil history. Following UTS, Lynchburg, Shenandoah, Wilson Teachers, Newport News, Norfolk Division, MCV, and Bridgewater will all visit The Devils' camp. The Green will play return games with the above schools plus a two game McGuire series with the Richmond Royals and singletons against National Business College, NACA Skyhawks, and the Langley Field Flyers. Its a prodigious schedule for Coach Allen's courtsters and a step ahead for RPI athletics.

That's two ways of looking at the 1950-51 card. A third and the most potent choice is to view the attractiveness it holds for followers of RPI's Green.

## INTRAMURALS

Basketball intramurals which began Monday night are scheduled for Monday, Tuesday, Wednesday and Thursday nights of each week.

Two games will be played each night at 6:15 and 6:45. The remaining games are scheduled as follows:

Dec. 11	827 vs. day
	828 vs. 820
Dec. 12	821 vs. 902
	214 vs. laf.
Dec. 13	827 vs. 820
	828 vs. 902
Dec. 14	819 vs. laf.
	821 vs. 214
Dec. 18	820 vs. 902
	Day vs. Laf.
Dec. 19	828 vs. 214
	819 vs. 821
Dec. 20	827 vs. 902
	820 vs. 214
Jan. 8	day vs. 821
	828 vs. 819
Jan. 9	827 vs. laf.
	902 vs. 214
Jan. 10	820 vs. 819
	day vs. 828
Jan. 11	827 vs. 214
	laf. vs. 821
Jan. 15	902 vs. 819
	820 vs. day
Jan. 16	827 vs. 821
	214 vs. 819
Jan. 17	laf. vs. 828
	902 vs. day



# SPORTS



## Femme Sports Feature

By Jay Howeth

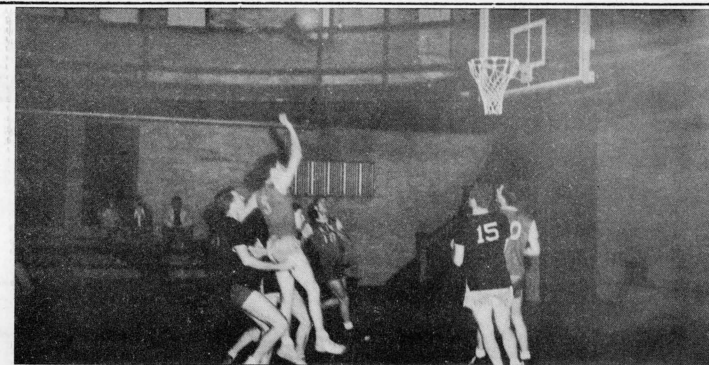
Hockey at RPI was officially ended with the battle of the sexes. The Soccer boys and Hockey girls clashed head on (humm, that must have been interesting,) this past Wednesday. So who is the weaker sex? That remains, as in the past, unanswered for the score was 0-0, in favor of nobody. Pardon my cliché!

Basketball practice has gotten under way and practices are held every Mon., Tues., and Thurs. This year there'll be two teams, the Varsity and Junior Varsity. They are two separate teams and will play separate games. "And never the twain shall meet." Any of you members of the female race are cordially invited to try your skill with the ball and hoop.

**Femme Featurette** — This week we've got the master of them all. Yep, you guessed it, Miss Chapman. Since hockey season is over I thought we'd give a little credit to the person who worked as hard as any girl on the field.

Miss Chapman is the lady with the new car that wouldn't know how to react if it carried a normal load. She always carried a carful of girls with her to the games, radio blaring, and girls yelling.

She, and the femmes, deserve a lot of credit for the work they did towards making their team a fighting one.



Bobby Bedinger (5) throws one thru during a practice game between the Devils and Randolph Macon. Other Devil players are number 18, Leo Allen, number 10, Bobby Tester, Randolph Macon's Cohn is number 15.

## Basketball Card Released By Allen Devil Quint Plays UTS Tomorrow

The Green Devils open the home position of their hardwood slate Friday night at 8 pm on the YMCA floor when they play host to the Union Theological Seminary.

Coach Edward Allen in his first year at the Green Devils' helm is emphasizing speed for his diminutive demons. Thus far in RPI basketball, the Devils' offense has been a slow operation, but Allen in an effort to overcome the height problem has drilled the current five on a fast-striking offense and pressing defense.

The Seminary quintet is expected to furnish a true test for the Green in the home opener. Little has been heard concerning the prowess of the cross town foe but the pregame pattern may berepitiitious of 1948. Regarded as a mild breather in '48 the Seminary paced by lanky Dan Thomas dumped the Devils by 20 points. Thomas and company repeated the feat later in the season and hold a two game lead in the court series between the schools.

Added to their determination for an impressive showing the Devils will be seeking revente for the losses two years ago. Coach Allen failed to nominate any probable starters for the curtain raiser but veterans Bob Tester, Bob Bedinger, and Bob Budlove, are rated as the front running candidates. Leo Allen and Bill Kimba have the edge on the other two starting births, and Coach Allen hinted that the entire squad would see action.

**VARSITY BASKETBALL PRACTICE EVERY EVENING AT 2:30 CENTRAL YMCA HARDWOOD**



BETS SIMPSON — Winner of the 1950 Hockey Scholarship

## Bets Simpson Wins Hockey Scholarship

Elizabeth Ann "Bets" Simpson won the 1950 hockey scholarship to the Applebee Hockey Camp. The scholarship enables her to attend the camp with all expenses paid come next fall.

Bets is a nineteen year old freshman at RPI and hails from Front Royal, Virginia. Before this year she had never played hockey and her "natural ability played the chief role in her winning the scholarship," coach Chapman stated.

Coach Chapman also said, "the selection was made on the basis as to the person who could contribute the most to come and we thought a Fresh-

man could do that. Consideration was also given to the upper classman."

Coach Edward Allen released the following 1950-51 basketball card of 20 games. All home games will be played at the Central YMCA at 8:00 pm.  
Dec. 8, Seminary, YMCA; Dec. 12, National Business College, Roanoke, Va.; Dec. 16, Lynchburg College, YMCA; Jan. 6, Seminary, YMCA; Jan. 8, Shenandoah College, Dayton, Va.; Jan. 10, Wilson Teachers College, Washington, D. C.; Jan. 12, Newport News Apprentice School, Newport News, Va.; Jan. 13, Norfolk Division, Norfolk, Va.; Jan. 16, Medical College of Virginia, YMCA; Jan. 18, Lynchburg College, Lynchburg Va.; Feb. 3, NACA Skyhawks, Hampton, Va.; Feb. 6, Bridgewater College, Bridgewater, Va.; Feb. 8, Richmond Royals, McGuire Gym; Feb. 10, Newport News Apprentice School YMCA; Feb. 12, Wilson Teachers College, YMCA, 3:00 PM; Feb. 13, Medical College of Virginia, YMCA; Feb. 15, Shenandoah College, YMCA; Feb. 17, M.C.V. vs Lynchburg, YMCA, and RPI vs Norfolk Division, 8:30 PM (Double-header); Feb. 28, Langley Field Flyers, Langley Field; Mar. 3, Bridgewater College, YMCA.

Its a temptacious schedule for shafter square's sports minded. With the Boosters Club as a stimulant to the spirit instilled by the soccer squad the outlook is bright and the season should be a ringing success.

## Back Your Team

man could do that. Consideration was also given to the upper classman."

## SPORTS CALENDAR

- December 7th —**  
Basketball Practice (boy's) YMCA 2:00
- December 8th —**  
RPI vs Union Theological Seminary, YMCA, 8:00; Basketball Practice (girl's) Gym, 4:00
- December 11th —**  
Basketball Practice (boy's) YMCA, 2:00; Basketball Practice (girl's) Gym 4:00
- December 12th —**  
RPI vs National Business College, Roanoke, Va. Basketball Practice (girl's) Gym, 4:00
- December 13th —**  
Basketball Practice (boy's) YMCA, 2:00
- December 14th —**  
Basketball Practice (boy's) YMCA, 2:00, RPI Girls vs McGuire Hospital, McGuire's, 4:00

**GIRL'S BASKETBALL PRACTICE MONDAY — TUESDAY THURSDAY RPI GYM — 4:00**

## New Art Gallery Opens For State, City Artists

On Wednesday night, November 29, the new "Linden Gallery" of Contemporary Art had its formal opening. The gallery is located in Linden Row, 114 East Franklin Street across from the Richmond Public Library.

This gallery will function as a cooperative institution in which Virginia artists will have the opportunity to exhibit and sell their work on becoming a member of the organization.

The foundation, to date,

has a membership of fifty, including numerous leading artists of the city and state and a large percentage of students and faculty of the Richmond School of Art of RPI. The gallery is the realization of a great need felt for creative art in Richmond.

BEACON

SELF-SERVICE LAUNDRY, INC.

FLUFF DRIERS

FINISHED LAUNDRY

DRY CLEANING

DIAL 6-9213

## Jingles Win Easy Money For Students

The combination of ads and cigarettes in our modern age can now make college students \$25 happier.

The Lucky Strike campaign calling for "Be Happy-Go Lucky" jingles does not require one to be a Shakespeare. All that's necessary to win \$25 is a simple four line jingle with the words Lucky Strike or the famous LS/MFT included.

The jingle can be about any phase of college life. No hallowed halls or professors' idiosyncrasies are free from mention if it comes to rhyming words of praise about smoking pleasure.

From a college in New Mexico down to prim Harvard, students have let loose in writing verse about Luckies.



Delicious Food

Julia's

RESTAURANT

801 W BROAD ST.

PHONE 84-1976

"EASIEST TEST IN THE BOOK"

WITNESSES: JOHN DWYER BOSTON COLLEGE '52

MAKE THE TOBACCO GROWERS' MILDNESS TEST YOURSELF...

"TOBACCOS THAT SMELL Milder SMOKE Milder"

YES... Compare Chesterfield with the brand you've been smoking... Open a pack... smell that milder Chesterfield aroma. Prove—*tobaccos that smell milder smoke milder.*

Now smoke Chesterfields—they *do* smoke milder, and they leave NO UNPLEASANT AFTER-TASTE.

CHESTERFIELD

LEADING SELLER IN AMERICA'S COLLEGES

OPEN 'EM

SMELL 'EM

SMOKE 'EM

PHOTOGRAPHS TAKEN ON CAMPU

Copyright 1950, Liggett & Myers Tobacco Co.

