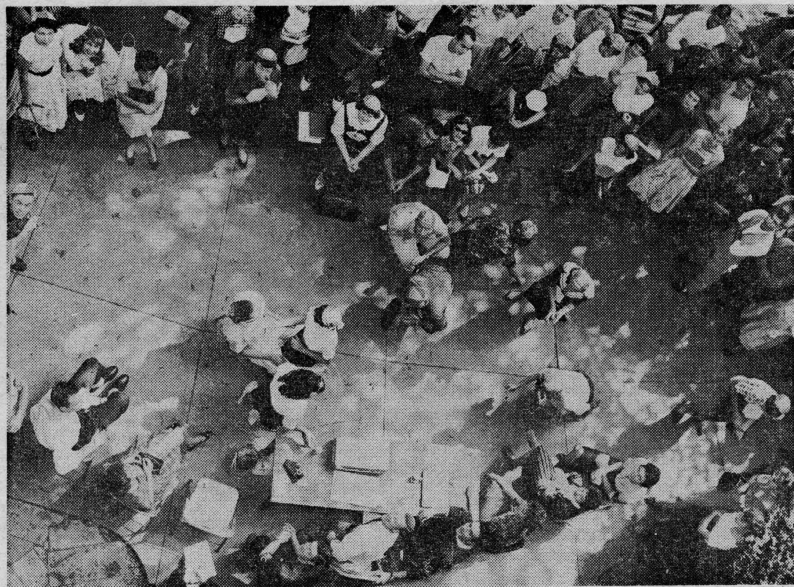


## Enrollment Reaches New High



**RATS AT RAT COURT** in front of the Administration Building. Rat Week ends tomorrow with the frosh turning on the juniors. Mr. and Miss Rat will be crowned at a sock-hop in the gym tomorrow night.

### Day College Figure Drops, Night School Jumps by 269

By Hugh Brown

For the second consecutive year the combined enrollment in day and evening school classes at RPI has reached a record high—4,363. This is 262 more than last year.

Figures received from the registrar's office Tuesday morning showed that 2,108 students had registered in the day school and 2,255 had signed up for courses in the evening college. Approximately 800 of these are freshmen and transfer students.

The day school registration figures represent a decrease of 12 students as compared with the number who had enrolled at this time last year. Although a few more students are expected to register for this week, registration in day school is not expected to exceed that of last fall.

Short tempers, general confusion and long, waiting periods, conditions quite frequently associated with the first days of school, were at least partially by-passed after a new pre-registration system was introduced this year.

Mrs. Ethel B. Riebe, RPI registrar, who was largely responsible for the new plan, indicated that she was well satisfied with the results. However, she said that the registration process was slowed when students come to the Registrar's desk without having filled out their class cards properly, failed to have their advisors' signatures on the schedule cards or neg-

lected to fill out two class cards for night classes.

Mrs. Riebe said that the administration was tentatively planning to register all students in one day next semester. She said it would not be possible to do so without the co-operation of the student body.

Despite many registration day problems, students, faculty members and administrative personnel voiced approval of the new pre-registration system, which allowed students to plan their schedules in advance of the registration period.

Dr. E. Allan Brown, head of the English Department, said that the new registration plan was "certainly an improvement over any previous system."

However, he said that he felt the new system might have been improved further. "For instance, it would have been a great deal of assistance to me if I had known exactly how many students were going into each English section," he said. More than 900 students are enrolled in the first two years of English in the day and evening school.

Bob Buchanan, Student Government Association president, said (Continued on Page 3)

## Rat Week Ends Tomorrow

RPI's traditional indoctrination period for freshmen students, Rat Week, which began Monday was ushered in this year by ranks of enthusiastic upperclassmen.

But as Rat Week ends tomorrow the juniors will become the targets of the joshing and the Rats will mete out punishments.

"I think Rat Week is about the most important week in college," Bob Buchanan, Student Government Association president, said.

Rat Court members, identified by green and yellow armbands marked "RC," have tried errant frosh this week and passed out suitable punishments.

Betsy Holt is chairman of this year's Freshman Advisory Board with Walter Hathaway as vice chairman. Other officers are Sharon Stark, secretary; Margaret Jones, treasurer; and Frank Du-

Priest, SGA representative.

The board, which was organized two years ago, is to guide the Freshman Class through the year, especially through the scholarship drive and the May Dance.

Orientation activities for the nearly 800 freshmen included the annual picnic and a hop, sponsored

last Saturday night by radio station WLLY.

An "Open House" Jazz concert, the Provost reception, tours of the campus, the annual Tea Dance at the Mosque and a record Sock Hop tomorrow night at which time Mr. and Miss Rat will be crowned round out orientation activities.

### Something in Common

## Frosh, Provost Begin Together

Dr. George J. Oliver, who took office as Provost July 1, said this week he feels that he and the new freshman class have something in common.

"I have a special interest in the Freshman class," he said. "I feel we have started together."

"There seem to be many promising people in that group," he continued, "and according to the Admissions Office, their high school records show them to be above the average class."

Dr. Oliver pointed to a new attendance record and added that "all signs point to a continued growth, both in the day school and evening college."

Enrollment figures at the night school have already topped previous marks and expectations. "Nothing has been more gratifying to me than the whole-hearted welcome I have received from everyone," Dr. Oliver continued.

He added that he was impressed by the "attractive and cordial group" at the reception for Freshmen held at the Provost's home on Sunday, September 20.

### Help Needed

Mr. William R. O'Connell, Dean of Men and staff advisor, to the annual is sending out an appeal for volunteers to help in the production of the "Cobblestone."

The Provost, a veteran of 13 years at the College of William and Mary as Co-ordinator of Branch Activities and Director of Extension Service, succeeded Dr. H. H. Hibbs who was associated with the school from its founding in 1917 until his retirement last June.



**PROVOST AND MRS. GEORGE J. OLIVER** in their new residence at 910 W. Franklin st. Dr. Oliver became RPI's top administrator this year when he replaced Dr. H. H. Hibbs who retired last fall after 42 years as provost.

### Assault Case Goes to Grand Jury Monday

A Hastings Court grand jury Monday is scheduled to receive the case of two Richmond youths charged with assaulting five RPI students on the night of Sept. 12.

The pair were charged in connection with the melee at an RPI dormitory at 312 N. Shafer st. shortly after 11 p.m.

Police arrested four of the gang later in nearby Monroe Park. Two were sentenced to 90 days by Juvenile & Domestic Relations Court.

Injured in the unexplained outbreak were Merridith Jones, Sam Bowling, Dave Holcumb, and Donroy Ober and Humie L. Horton.

Dr. George J. Oliver, RPI Provost, Saturday recommended that necessary steps be taken to prevent further incidents. The Provost, however, was not able to prescribe definite action since it appeared that something more than students and the campus was involved.

## Provost Asks \$1.5 Million For Building

State funds totaling more than \$1,500,000 have been asked for reconstruction of the science building and an addition to the Hibbs Building at RPI.

The requests were made by Dr. George Oliver, Provost, during the final hearings for the 1960-62 state budget before Governor Almond and his budget advisers.

Approximately \$965,000 was asked for reconstruction and an addition to the science building at 816 Park ave. Two new wings would be added to the three former residences, which now house offices, laboratories and classrooms.

RPI's new Hibbs Building, opened last February, would get a four-story addition costing about \$565,000 under the proposed expansion. Space for 12 or 14 new classrooms, faculty offices and more space for the bookstore would be included in the addition.

The Provost explained that present plans called for the expansion of Hibbs Building toward Park ave. and removal of the Music Department building and Lee House dormitory.

He said the entire first floor of the addition to Hibbs Building would be devoted to a bookstore. The present bookstore would be converted into a student lounge, making available the entire first floor of the present Hibbs Building for student leisure use.

Other proposed improvements for the campus, Dr. Oliver continued, include work on the vacant lot across Shafer st. from Hibbs Building and renovation of the Shafer Street Theater.

(Continued on Page 4)



# PROSCRIPT

901 W. Franklin Street, Richmond, Virginia

Represented for National Advertising  
by National Advertising Service, Inc.,  
420 Madison Ave., New York, New York.

Member:  
Associated Collegiate Press  
Virginia Intercollegiate Press

Robert Boswell, Editor;  
Shirley Voland, Managing Editor  
Carole Sandy, News Editor  
Bobbie Bennett, Feature Editor  
Hugh Moore, Sports Editor  
Vicki Sharpe, Business Manager

## Enrollment Vs. Facilities

The class of '63, presumably the largest to enter RPI, has come at the beginning of what promises to be a period of outstanding growth here. We bid them welcome.

Although precise figures on freshmen enrollment had not been tabulated early this week in the Registrar's office, an idea of the size of the class was obtained from the Admissions office. It was reported there that about 800 were admitted, an increase of 225 over the Admissions office's comparable figure last fall.

At the end of late registration period Friday, according to the Registrar's office, RPI had an enrollment of 4,363—2,108 day school students and 2,255 in the night side. As nearly as we can determine this is the third largest enrollment in Virginia, exceeding that of the University of Richmond by a small number.

These figures show that RPI's enrollment is increasing. The new buildings on campus show that the school is growing physically. But the expansion of facilities is not keeping pace with the additional enrollment.

The Administration Building, for instance, is extremely crowded, and it is "ancient." The day is near when the patch repair work which has been going on for years will no longer suffice.

The student lounge, only one year old, is already overcrowded. It should be noted, however, that this situation will probably be corrected when and if funds for the extension of the Hibbs Building are appropriated. Plans for the enlargement of the book store are included in plans for the same extension.

However, enrollment jumps have not affected all facilities. The cafeteria is serving slightly fewer meals than they did this same time last year.

The book store is selling close to the same total number of books as it did last year but there is a noticeable demand increase for some courses, especially in the evening college.

Even though the day school enrollment has dropped by 20 from last September's, 1959 marks another total increase in students and the need for expanded facilities.

It's time that the state began appropriating a proportionate share to this college.

## Enthusiastic Start

Tomorrow will mark the end of Rat Week, which ends Freshmen Orientation for 1959. The people who organized it should be proud for it has been described as most successful.

We are using attendance and enthusiasm at the various activities during the orientation period as measures of "success." The figures in the story on Page 1 show that all records have been broken. In addition, the estimated attendance of 200 at the first class meeting, which was not a part of orientation, must not be overlooked.

Widespread enthusiasm for anything at RPI appears to be non-existent, at least among the older students. Enthusiasm by a class was unheard of. For instance, there were 25 present at the first Junior class meeting.

The success of freshmen orientation can be attributed to a number of things. The program has been developed and improved from year to year by student leaders under the guidance of Deans Johnson and O'Connell. The Freshmen Advisory Board, set up two years ago, is one result of their planning.

However, the real work of the board is yet to come. Successful beginnings have been noted before but somewhere along the way student interest has subsequently dissipated. Besides its large number of married students, RPI has many who work part- and even full- time, a large number of older students whose interest doesn't lie in college activities; and hundreds of Richmond residents who take no part in extra-curricular campus life. These and other factors will always prove to be major obstacles.

Bob Buchanan, SGA President, prompted by the success of orientation, threw out this thought during a conversation in The Rotunda one afternoon last week: "It's much easier to continue the new interest the freshmen have than it is to revitalize interest of the older students."

The Advisory Board and the SGA this year will do well to build on that promise.



THE ROTUNDA, opened only last year, is already overcrowded. (See editorial this page). Many students have to stand or seek places elsewhere.

## Provost's Letter To School

TO THE FACULTY AND STUDENTS AT RPI:

May I say first of all that Mrs. Oliver and I are most grateful to everyone connected with the College for the warm welcome which has been accorded us since we have been at RPI. May I extend a similarly warm welcome to faculty and students for whom this is their first session at RPI. We hope that each one of you will find this year one of accomplishment and satisfaction.

To the students who are returning to RPI we would extend an equally warm welcome and all good wishes for a successful year.

I should like to emphasize in this, our first communication through the college paper, the fact that the educational services which RPI can render, its academic standing, and the regard in which the College is held by the state and community which it serves depends upon the recognition of common purposes for all of us who are connected with the College in any capacity, and the effective cooperation of faculty, students and staff alike in accomplishing them.

Sincerely yours,  
George J. Oliver, Provost

## Enrollment

(Continued from Page 1)

that he felt the registration process was a little less painful this year. He said that registration was speeded up after some of the check-out tables were placed outside the gym, allowing the students to complete registration before signing up for some of the clubs.

The parking problem will be reduced slightly for the night school students this year. A change in regulations allows students to park in the spaces reserved for day school instructors after 6 p.m.

Welcome  
R. P. I.  
Students  
Select from a  
Complete Line of  
School Supplies  
and  
Hallmark Cards  
Smith's  
Book Store  
739 W. GRACE ST.

## 14 New Members Added to Faculty

Fourteen new faculty members have been added to the full-time teaching staff this fall.

One new teacher, Mr. John Bosworth-Fling is associate Professor of English. Mr. Bosworth-Fling received his MA in English from the Graduate School of Journalism at Columbia University, his MS degree from Medill School of Journalism at Northwestern University and his AB degree from West Virginia University.

In the Drama department, Miss Agnes G. David will replace Miss Quaid as costume head. Miss David received her BFA at the University of Texas.

Mrs. Jean I. White and Mr. Paul M. Umberger have joined the teaching staff in the Business department. Mrs. White, a former part time instructor here, received her Masters from RPI last February. Mr. Umberger instructed at Virginia Polytechnic Institute before coming to RPI.

New teachers in the Distributive

Education department are: Mr. David C. Dolan, Mr. Barry A. Frazee and Mr. William Graubard. Mr. Dolan received his Masters in Retailing at the University of Pittsburgh. Mr. Frazee is a graduate of V.P.I. He formerly taught in Hopewell Public schools. Mr. Graubard received his BS at the City College of New York and managed his private advertising service in Palo Alto, California before coming to RPI.

Other new teachers in various departments are:

Jean C. Gilliam, Costume and Design department, who studied at Goucher and received her BFA at RPI; Mr. Clinton S. Ferguson, Professor of Economics, who received his Masters at the University of Tennessee and served as Assistant Professor at East Tennessee State.

The departments of Engineering Technology, Music and Commercial Art each received one new teacher. They are: Mr. Leonard G. Hoadley Department of Technology, who received his BS in Engineering at Wisconsin State University; Mr. B. M. Litten, Department of Engineering, who graduated from V.P.I.; Mr. J. L. Robinson, Department of Music, who served as Assistant Professor of Music at Lander College and received his Masters in organ at the University of Michigan; Mr. D. M. Merrick, Commercial Art, who received his Masters at the University of Mexico.

In addition, Dr. Roderick C. Cary, has accepted a position in the Chemistry department. He is also an associate professor. Dr. Cary is a native of Chicago who received his PhD at the University of Illinois and formerly worked with Rohm & Haas Co., Chemists.

## Applications Due

Students who expect to complete degree requirements in January or June, 1960, must have a degree application in the Registrar's office by November 1.

## Campus Calendar

October 1  
Westminster Fellowship Meeting,  
Gym, 6:00—9:00 p.m.  
October 2  
Rat Dance sponsored by the Junior Class, Gym, 8:00—11:00 p.m.  
October 8  
BSU meeting, Hibbs Building,  
5:30—7:00 p.m.

One Stop Service For  
Dry Cleaning and Laundry

At

933 W. GRACE STREET

(around the corner)

ESQUIRE ONE-HOUR CLEANER



# PROSCRIPT SPORTS

By Hugh Moore

The summer of 1959 will easily be remembered as the "Year of the Underdog," "The Year of the Upset," or perhaps more appropriately, "The Year in Which the Unexpected Became the Expected."

Let's examine the record:

Ingemar Johansson arrived in the United States with valet, body-guard (as if he needed one), cook, manager, trainer, attorney, entire family and attractive girlfriend.

Ingo proceeded to make the rounds of New York clubs, bars, shows, to turn up for television interviews, personal appearances and speeches and also he even managed, somehow, to find time to train for his heavyweight title fight with Floyd Patterson.

Come fight night and Johansson was established as a solid 5 to 1 underdog. After 206 left jabs, one straight right and seven knockdowns, Ingo was crowned world's heavyweight champion and Patterson was simply a 24-year-old former champion pounded almost into fistic obscurity.

Only one aspect of the Johansson-Patterson fight keeps it from being a credit to boxing. Thus far Johansson has received nothing for winning the world title. It seems that there were more low, dirty punches outside than inside the ring. A New York senator has described the June Johansson-Patterson bout as, "a disgrace to the state."

Maybe Jack Dempsey, who presided over the return fight arrangements, can straighten out the financial and legal mess.

## THE NEW YORK YANKEES—THIRD

Sharing top honors for upset of the year, we must also note, are the Yankees. The Yankees, with the same team won the pennant the preceding two years and now, even with new talent, they finished 1959 in third place.

The Yankees, always the team to beat, this year simply were outplayed. A great deal of that "outplaying" incidentally, was done by the Boston Red Sox.

While mentioning baseball, it is interesting to note that the American League pennant winners, the Chicago White Sox, won with an assortment of castoff players, old men and the best second baseman in baseball, Nellie Fox. Regardless of who the Sox meet in the World Series, we must pick them to take the series, four games to three.

Another major sports upset came from the squared circle, where Gene Fullmer defeated Carmen Basillio for the welterweight boxing championship.

## THE RICHMOND VIRGINIANS—FOURTH

Another disappointment in the sporting world came when the Richmond Virginians finished fourth in the International League race. Some of the blame for the Richmond finish can be attributed to the parent New York Yankees, but much of it must be kept here at home. As in the case of the Yankees, the Vees also simply were outplayed by three other clubs. And then, to prove that they were a pretty good ball club, the Virginians rose up and smacked down the mighty Bisons in the International League playoffs.

If this is to continue to be "The Year of the Upset," let us hope that the RPI baseball and basketball teams will have winning seasons.



Athletic Director Edward P. Allen begins his ninth year this fall as head of the Physical Education Department. Allen serves as baseball and basketball coach, and he is chairman of The Athletic Committee.

PROSCRIPT—Thursday, October 1, 1959

3

## Top Teams Are Picked

Here are the PROSCRIPT picks as seen by the sports Editor.

### Top 10

1. Louisiana State
2. Wisconsin
3. Auburn
4. Southern Methodist
5. Oklahoma
6. Mississippi
7. Air Force
8. Texas Christian
9. Clemson
10. Iowa

### All-American

- L. E. Curtis Merz—Iowa  
L. T. Don Floyd—TCU  
L. G. Mike McGee—Duke  
C. Jackie Burkett—Auburn  
R. G. Zeke Smith—Auburn  
R. T. Jim Heineke—Wisconsin  
R. E. Jim Houston—Ohio State  
Q. B. Don Meredith—Southern Methodist  
H. B. Dick Bass—College of the Pacific  
H. B. Billy Cannon—Louisiana State  
F. B. Pretice Gautt—Oklahoma  
The PROSCRIPT picks as Coach of the Year—Ara Parseghian of Northwestern.

## Welcome Back To

E

Overall Modern Decor

T

Indirect Mood Lighting

O

200 LP Selection Jazz Jukebox

N

Complete Soda Fountain With Backrest Stools

S

Tasty Short-snaxs Including Pizzas

## Welcome Back Belvidere Inn

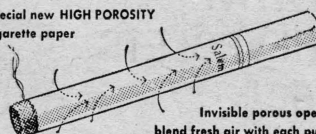
601 W. Grace St.

In addition to our Kosher style sandwiches with which you are now familiar, we would like for you to taste our new

*Bavarian Bratwurst*

## Salem's new cigarette paper discovery "air-softens" every puff!

Special new HIGH POROSITY cigarette paper



Invisible porous openings blend fresh air with each puff for a softer, fresher, more flavorful smoke

Salem research creates a revolutionary new cigarette paper that breathes new refreshing softness and finer flavor into the smoke. Now, more than ever, there's Springtime freshness in every puff of a Salem. Smoke refreshed... smoke Salem.

Created by R. J. Reynolds Tobacco Company



• menthol fresh • rich tobacco taste • modern filter, too

NOW MORE THAN EVER **Salem** refreshes your taste



## For Drama Students

## Jobs Lead to Movie Offers

Movie offers and practical experience capped a successful summer for 18 RPI drama students.

The largest representation was in outdoor theaters.

Robert McQuain and Marilyn Ende, two of the better known performers of the RPI theater, held down the male and female leads in the "Lost Colony"; McQuain played the same role that Andy Griffith played in that production. McQuain, who played the lead in "Bus Stop" here last year, received a movie test from MGM which could result in a contract. Marilyn Ende was graduated last June. McQuain, a freshman, didn't return to school.

June Allison Harding, a senior last year, who won the Hodges Award for her performance of Antigone in the play "Antigone," has been offered a screen test with Columbia Pictures. June also has an off-Broadway understudy role.

The Hodges Award has been given each year, for 10 years, to the outstanding actress and actor chosen by the Alumni Committee. The award was originated by Mr. Raymond Hodges, department head, in memory of his parents.

## Maine Playhouse

Jay Dunn, Walta Chandler and Don Linahan rubbed phrases with some of the greats of their profession.

Dunn worked with Diana Barrymore, Tom Poston, Joan Fontaine, Jane Morgan and others while at the Kennebunkport Playhouse in Maine.

Walta Chandler and Don Linahan played parts with Elizabeth Wilson and David King while at the Barter Theater in Abington, Va.

Marcia Block, a sophomore, worked with German, French and

Dutch students in an English-speaking theater in Frankfurt, Germany.

Marian Kenzie was hired for a dancing part in "Thy Kingdom Come," which was performed by an outdoor theater in Roanoke.

"I couldn't dance a step at the beginning of the season," Marian admits, "but after a few weeks of bluffing I got on pretty well." She was given a speaking part later in the summer.

## Double Role

Stanley Sobie was asked to be in the chorus of "The Confederacy" at Virginia Beach and later he received two speaking roles. He

played a Union colonel and General Lee's aide in the same performance.

Also seen in the "Lost Colony," Manteo, N. C., were Charles Lee Shockley, Barbara Jones and Lisa Milton.

"Unto These Hills," given at Cherokee, N. C., featured Bob Buchanan, Ken West, James Davis, Francis Duddon and Judd Schreiber. Thomas C. Holloway, technical director of the Drama Department at RPI, was an assistant technical director of the drama.

Don Lee Norris, who was graduated last June, appeared in "Horn in the West" at Boone, N. C.

## Waldorf Replaces Grogg in SGA

Judy Waldorf, a senior Distributive Education major from Timonium, Md. has been appointed to replace Betty Jean Grogg as Student Government vice president.

The announcement was made by President Bob Buchanan Wednesday night at the first SGA meeting this year. Betty didn't return to school because of illness. Judy's appointment was approved by the unanimous votes of the Student and Executive Councils. She was Betty's running mate in SGA elections last fall.

In a routine first-of-the-year meeting, the Student Government Association's standing committees were appointed last week. Student Council also received instructions about the handling of social functions and club accounts.

SGA President Bob Buchanan told the group the SGA Scholarship drive will take place November 17-21.

## \$1.5 Million

(Continued from Page 1)

He told the Proscript that "for the time being" he would follow the planned projects laid out by Dr. H. H. Hibbs before his retirement last summer.

Turning to the parking problem, the Provost said, "As rapidly as RPI can acquire spaces for parking, they will be used. We are aware of the problem and as opportunities are afforded we will make use of them."

Regarding the proposed mall through the campus, Dr. Oliver discounted rumors that the area would be paved in concrete.

"I think of it as a lawn area rather than concrete," he said. Plans for the mall call for a grassy lane planted with trees along the alley behind the Administration Building.

FOR THE  
BEST1  
STOPL  
A  
U  
N  
D  
& R  
Y  
C  
L  
E  
A  
N  
I  
N  
GSERVICE  
DELUXE  
SHIRT  
FINISHING  
WASH  
'N'  
DRY  
MEADOW  
AUTOMATIC  
LAUNDRY410-412 N. Harrison  
between  
Grace and Franklin

Where Allen Meets Grace

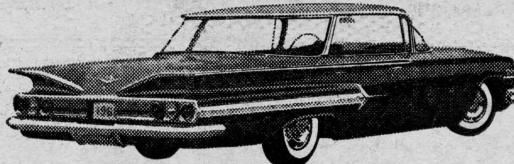
Precision  
Is Our  
Watchword

We fill every prescription with the utmost care to always give you "just what the doctor ordered" for your health...

PROMPT DELIVERIES  
Be it a snack or a meal... you will be delighted with the excellent food served in our Shenandoah room.  
Just Around the Corner from  
Sears and Food Fair

**Foy's**  
PHARMACY EL3-2342  
Grace St. at Allen Ave.

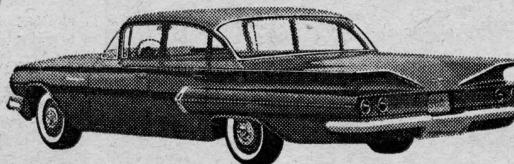
HERE NOW ARE

SIXTY'S  
SIZZLERS16  
SUPERLATIVE  
NEW CHEVROLETS  
FOR 1960!Nearest to perfection a low-priced  
car ever came!

4 IMPALAS—All the car you ever yearned for! Each embodies distinctive treatment inside and out, with triple-unit rear lights, fingertip door releases and safety-reflector armrests. Impala sport sedan above.



4 BEL AIRS—Priced just above Chevy's thriftiest models! Like all Chevs, they give you the famed Hi-Thrift 6 or a new Economy Turbo-Fire V8 as standard equipment. 4-door Bel Air sedan above.



3 BISCAYNES—These (honest to gosh) are the lowest priced of the '60 Chevrolets. They bring you the same basic beauty and relaxing roominess as the other models. 4-door Biscayne sedan above.



5 STATION WAGONS—Styled to carry you away, with the kind of cargo space to carry away most anything you want to take with you! Thrifty 2-door Brookwood above.

Top entertainment—The Dinah Shore Chevy Show—Sunday NBC-TV—Pat Boone Chevy Showroom—Weekly ABC-TV—Red Skelton Chevy Special Friday, October 9, CBS-TV.

See your local authorized Chevrolet dealer