

On RPI's Thanksgiving Menu - STEAK

By Susan Smith

The great cranberry scare won't affect the cafeteria's Thanksgiving plans.

Mr. Edward Bigger, manager, disclosed yesterday that purely by coincidence he already had decided against the traditional menu for Wednesday, last school day before the holiday period. Mr. Bigger will serve steak.

He feels that students get "fed up" (his words) with turkey when they eat it immediately before they go home, at home, then as hash back at school again the following Monday.

America's great cranberry scare came about two weeks ago, when Arthur S. Fleming, Secretary of Health, Education and Welfare, said some berries from Oregon had been sprayed with a weed-killer that produced cancer in rats.

"We get our cranberries from the Eastern growers, so I don't think ours would have had any of the poison spray," said Mr. Bigger. (See editorial comment, Page 2.) However, he disclosed that Slater Food Service, which has operated the cafeteria since 1957, has ordered him to throw out all cranberries—just to be on the safe side.

What do the students think about having steak instead of turkey with cranberries for the dinner which is to be served at noon Wednesday before school closes? Here are three reactions:

Freshman Nina Peoples, who doesn't like cranberries—"Steak is the berries with me."

Freshman George Carey—"If I wanted steak I'd go to Nick's."

Sophomore Charles Clifton—"I think that's what we had last year." He's wrong. The RPI cafeteria served turkey—with cranberries—last Thanksgiving eve.

Green Devils

Start Season

Against Alumni

Page 4

PROSCRIPT

Second-class postage paid at Richmond, Va.

RICHMOND PROFESSIONAL INSTITUTE
Of the College of William and Mary

Published weekly (during the school year) except during holidays and examination periods.

Vol. 40—No. 8

Richmond, Va., Thursday, November 19, 1959

Tel. EL 5-9133

Honor Council

Case Number One

Plagiarism

Guilty

SGA Fund Drive Passes Halfway Point

Cotillion Reinstatement Promised

Reorganization Of Girls' Club Is Authorized

The Cotillion club met under official sanction for the first time Tuesday night and elected officers for 1959-60.

"The club is in. It's official," Linda Menard told eager members. Linda, vice president elect of the Cotillion Club, was speaking of the recent decision by the Administration to reinstate the women's social club this year.

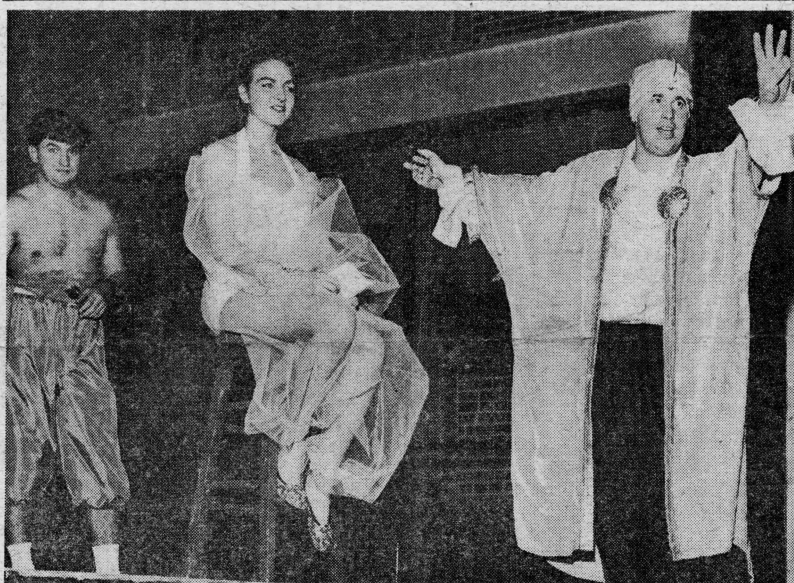
Petition Presented

The administration announced its decision Friday after former club members presented a signed petition for reorganization to Dean O'Connell. The Cotillion club was discontinued last year by Administrative action because of failure to enforce the no drinking rule at its first dance.

Officers Elected

Under formal recognition the members proceeded to elect club officers. The slate is as follows:

The president, Sue Carter, junior Art major was elected to the office in absentia. Other officers were vice president—Linda Menard, junior, occupational therapy; corresponding secretary—Pinky Morris, junior, sociology; recording secretary—Beth Massey, junior, art education; treasurer—Jan Devore, senior, occupational therapy; SGA representative—Eleanor Phifer, freshman, commercial art; and SGA alternate—Carolyn Spangler, freshman.



Ike Photo

Slave Margaret Zeigler is auctioned off at FBLA sale last Tuesday night
Phillip Shaheen (left) was slave driver for auctioneer Tom Soles

Close Rotunda, Says Council

by Anne Fitchett

A proposal recommending the temporary closing of the Rotunda was brought before Student Council last Wednesday night but was tabled for a week.

Under the proposal, the Administration would be asked to close

the Rotunda because students have not co-operated in a campaign to clean up the lounge.

In the liveliest meeting of the year, council members voiced general opposition to the plan and offered several possible solutions to the problem.

Bob Buchanan, Student Government Association president, in presenting the executive council's suggestion, told council that "nothing has done any good so far" in attempting to combat the littered tables in the Rotunda.

According to Buchanan, the closing of the lounge would encourage students to deposit trash in the proper receptacles. He reminded council members, however, that

they are not required to take any action at all, but could, "let it (Rotunda) stay dirty" if they wanted.

Officials Decline Comment

Buchanan said he felt the administration would co-operate although he had no official word on the matter. Administration officials declined to comment, saying they would be glad to consider the matter if and when it is brought before them by Student Council.

William McQuail, German club representative, told council he felt the proposal was no solution because, "if the lounge is closed, students will just leave the mess out."
(Continued on Page 4)

Nitchie to Make Final Report Saturday Night

As of 4 p.m. Tuesday slightly more than \$700 of the \$1,500 scholarship drive goal had been turned over to Bob Nitchie, fund chairman.

Nitchie hastened to add that more had been raised but would not be turned over until financial details of the various groups are completed.

The drive will end Saturday night with the opening Green Devil basketball game against the Alumni. The game will begin at 8 p.m. in the gym.

The results of the drive will be announced at halftime by Nitchie.

Several student government officials and Dean of Men, Carson Barnes, from the College of William and Mary have been invited to the scholarship finale. They are, Ralph Crutchfield, president of the student body and Richard Neely, president of the Inter-Fraternity Council. Also present will be Dean O'Connell and the RPI SGA officers.

Tuesday afternoon Nitchie reported that all was going smoothly and said that the goal should be exceeded if the interest shown did not slacken.

Several groups whose activity has either been completed or is in progress have gone over their goals. A rundown of those groups follows:

FBLA

The Future Business Leaders of America club packed the Shafer Street Playhouse to almost double capacity Monday night for its popular slave sale, but failed to make as much money from the auctioning as they did last year.

Veteran slave auctioneer, Tom Soles, called numbers for 27 coeds from student buyers. However, 25 cents admission was charged for the first time which brought the total FBLA contribution to the drive to \$152.85, the highest ever for that club. Last year \$120 was made on the sale.

Joyce Rodman, a freshman costume design major, sold for the highest amount, \$7. Several groups pooled their funds and purchased on the co-op plan. One of these deals was headed by Louis Paret who collected \$12.75 for three coeds to go to a party sponsored by the district circulation managers for Richmond Newspapers Inc.

Senior Class

"New Forms," presented last Thursday and Friday nights in the Shafer Street Playhouse netted \$164, topping the senior class pledge by \$30.

The stage show, which was pre-
(Continued on Page 2)



Ike Photo

Coeds present Cotillion club petition to Dean O'Connell
They are (left) Sally Nicar and Linda Menard

Turkey Recess Begins Wednesday After Steak

RPI will close at the end of classes Wednesday for the Thanksgiving recess, Dean O'Connell has announced.

Dormitories will be closed at 5 p.m. that day. They will reopen at noon the following Sunday.

Students who plan not to leave for the holiday will be housed in two dormitories. The girls will stay in Founders Hall. A dorm for men has not yet been decided, the Dean said.

Those who plan to remain at school during the recess should consult their dorm hostesses for permission. No deadline has been set. Classes will begin again at 8 a.m., Monday, November 30.

PROSCRIPT

901 W. Franklin Street, Richmond, Virginia

Represented for National Advertising
by National Advertising Service, Inc.,
420 Madison Ave., New York, New York.

Member:
Associated Collegiate Press
Virginia Intercollegiate Press

Robert Boswell, Editor;
Shirley Voland, Managing Editor
Carole Sandy, News Editor
Bobbie Bennett, Feature Editor
Hugh Brown, Copy Editor
Hugh Moore, Sports Editor
Paul Steucke, Art Editor
Don Ikenberry, Photography Editor
Vicki Sharpe, Business Manager

To Eat or Not to Eat

To eat or not to eat,—that is the question:
Whether 'tis safer for the stomach
Not to suffer the slings and arrows
Of contaminated cranberries...

Such is the problem facing many who are planning the 1959 Thanksgiving feast. Food experts claim that much of the 1958-59 berry crop is tainted with chemicals used to induce thyroid cancer in rats; and yet, what's a turkey dinner without cranberries?

The Cranberry Controversy is making headlines across the nation. Indignant cranberry growers are asking compensation for their losses in sales; many grocery stores have removed cranberries from their shelves and food editors suggest saucy substitutes—winter pears, wine jelly, green marmalades or apple sauce.

It appears that it will be a cranberryless Thanksgiving for many, even though there is a faction that intends to ignore the report. Words are fast and furious as the latest news releases are issued. Washington and Oregon and more recently Wisconsin cranberries have been found to contain the chemical. But Massachusetts is planning a cranberry party for the public attempting to promote sales. Vice President Nixon vows he will eat cranberries; Mr. Biggers serves steak in the RPI cafeteria.

However, the more important question should be how infected cranberry shipments got by the Pure Food and Drug Laws. How, with the extensive tests supposedly in operation, were the shipments allowed on the retail market? That is where the issue lies. How many other products equally dangerous are consumed by the public every day? Perhaps the cranberry question will be influential in further investigation of inspection laxity.

—C.M.S.

Stepchild

American television, the red-headed stepchild of an invention by one Willoughby Smith, English engineer, may finally have come of age.

Admittedly, it hasn't been easy to see through the smoke screen laid down by the stalwart Mat Dillon (who really doesn't smoke, by the way) or the dust storm created by the passing of Major Adam's *Wagon Train*; but there does seem to be some hope.

This fall, in addition to the Western (there are 27 to be seen on the three Richmond area channels now), it appears that the three major networks are ready to devote more time to drama of time-proven quality.

Last week an adaptation of Henrik Ibsen's "A Doll's House" emerged from the haze. Friday night, viewers were treated to "Our Town," one of Thornton Wilder's better plays. The preceding week Sir Alec Guinness, the inimitable Britisher recognized by royalty and commoner alike as the most versatile of actors, made an initial appearance on American television in "The Wicked Scheme of Jebel Deeks."

Recent television fare has also been spiced by the return of Ingrid Bergman in an adroitly adapted version of one of the greatest of all mysteries, "The Turn of the Screw."

If these and other recent dramatic efforts via the television medium are any indication of what is to come, then it would seem that television has, at least, reached the beginning of maturity.

—H.B.

Campus Calendar

- Nov. 19—Male Sale, Shafer Street Playhouse, 8:00
- Nov. 19—Accidental Jazz Jump, Gym, 8-11 p.m.
- Nov. 19—Day Students' League meeting, Hibbs Bldg., Rm. 203, 6:00 p.m.
- Nov. 20—Commercial Design Club movie, Hibbs Bldg., 8:00 p.m.
- Nov. 20—Student National Education Association Card Party, Gym, Room C, 8:00 p.m.
- Nov. 21—Basketball Game and Sockhop by Monogram Club, Gym, 8:00 p.m.
- Nov. 24—German Club meeting, AD 100, 6:00 p.m.



Scholarship Drive Ends Saturday Night

(Continued from Page 1)

sent to a near capacity house each night, featured a beatnik theme. All the performers were students as were the directors and technicians.

George Bulger and Karan Harshburger were co-directors with some last minute aid by Bob Buchanan, SGA president. The show consisted of about 20 dancing, musical and comedy numbers.

Fine Art Club

The Fine Art club sale of art prints, has already turned in \$31. The club's goal is \$15. Prints will be on sale through tomorrow afternoon in the gallery on the fourth floor of the gymnasium building.

Distributors Club

The Distributors club took in \$108.65 to exceed its pledge by \$63.65, as they trounced the German club on the basketball court.

Sophomore Class

Approximately 300 students ate at the sophomore class dinner in the cafeteria last Sunday. The class gave \$175.

Male Sale Tonight

A male sale, sponsored by the freshman class, will be held in the Shafer Street Playhouse tonight. More than 20 males will be auctioned by Tom Soles and slave driver Phillip Shaheen.

Results of the junior class Ber-

Theater Group Sponsors Display

Beginning tonight the Theater Associates Club of the drama department will sponsor a display each week in the lobby of the Studio Theater on one drama student from each class.

The display was originated by Mr. Raymond Hodges, department director and drama student Ed Cohen. It will consist of photographs, newspaper articles and summer stock souvenirs.

Marshall Murdaugh, freshman; Sharon Godsey, sophomore; Dianne Hord, junior and Don Hord, senior, will be featured this week.

For the past two weeks, the committee in charge of the display, Mary Sue Breckenridge, Ed Cohen and Stanley Soble, have presented a display of pictures and articles from the department's past activities.

A different display will be set up each Thursday night.

muda Sock Hop given Tuesday night and the German Club wheelchair basketball game against McGuire Hospital paraplegic team were too late for this issue.

Religious Clubs

The Wesley Foundation donated \$10 to the fund from its treasury. The Baptist Student Union sponsored a Shipwreck dance, the opening scholarship activity November 7, and raised \$23. Its pledge was \$20.

Inter-dorm

The Women's Inter-dormitory Council, which is selling lates to coeds (or their dates) at one cent per minute, had turned in \$55 Tuesday with only three dorms reporting and four days remaining. Last year \$111 in lates were sold.

Student Directory To Be Released About December 1

The Student Directory, an annual project of the Future Business Leaders of America club, is expected to go on sale around December 1, according to Bill Greenlaw, who is in charge of the publication.

For the first time the directory will be printed and will contain advertising. It will include about 2,000 names and home and local addresses.

In addition, phone number, high school graduated from, class and major will be listed. There will also be a listing of the phones in the Administration building and dormitories.

The book will sell for 50 cents.

Hord, Chandler Star Tonight In Studio Theater

One act from "Caesar and Cleopatra" by George Bernard Shaw and "Beauty and The Jacobin" by Booth Tarkington will be presented at 7:30 o'clock tonight in the Studio Theater.

"Caesar and Cleopatra" might be termed a satire on modern thoughts and illusions. The lead roles will be played by Don Hord as Caesar and Marie Gable as Cleopatra. Geneva Bell will portray the attendant. The performance will be directed by Charles Shockly.

"Beauty and The Jacobin," directed by Barbara Jones, will feature Walta Chandler, Lewis Stout, Ralph Payne, Richard Askew and Robin Williamson Scola. It is the story of the struggle between the common people and the aristocracy during the French Revolution.

Donations will be sought to aid in the scholarship drive. This is the second effort by the Theater Associates to raise money for the drive. Donations were also collected at one-acts two weeks ago.

Drawings on Display In Art Building

Drawings by the German-Swiss artist Paul Klee are on display in the second floor of the Shafer Street Building. A leader of German 20th century art, Mr. Klee has worked in such Museums as the Virginia Museum, the Metropolitan Museum of Art, the Chicago Art Institute and many others.

We Stock our
store with

R. P. I.

in mind.

RAY'S 5 & 10
STORE

927 W. Grace

R. P. I.
Students

Select from a
Complete Line of
School Supplies
and
Hallmark Cards

Smith's
Book Store
937 W. GRACE ST.

LAUNDRY

and

DRY CLEANING

Cleaning
Wash 'n' Dry

Flatwork Finished
Alterations

SHIRTS FINISHED

"Shirts You'd Love to Wear"

MEADOW AUTOMATIC LAUNDRY

410-412 N. Harrison St.
Between Grace and Franklin

Green Devils Open Saturday Against Alumni

RPI will open its 15th basketball season Saturday against the Alumni squad.

The game, the windup to the scholarship drive, will be played in the gym.

P E Unit Adds Bowling To Schedule

A new sport has been added to the Physical Education department. A bowling class has been meeting each Tuesday since the beginning of the semester under the direction of Miss Nancy Alexander.

During the first month the class was taught the principles and proper techniques of bowling. For the past three weeks, individual scores and averages have been kept.

A mixed league has now been formed from the class consisting of six teams of four players each. The teams were made up after combined averages were determined to keep them as closely matched as possible. Squad captains will be chosen at a later date.

In last week's action, Ann Patram turned in the high score with a 115. Gayle Smith rolled a 109.

Bowling is a one-semester course. The league, however, will continue and will be open to the entire school on a no-credit basis.

Team standings are as follows:

| Team | Won | Lost |
|-------|-----|------|
| Blue | 2 | 1 |
| Green | 2 | 1 |
| Black | 2 | 1 |
| White | 1 | 2 |
| Red | 1 | 2 |
| Gold | 1 | 2 |

The Green Devils, 12 strong, will face former RPI athletes Don Kloske, Kelly Bazemore, Jim Craven and Bill Marshall in what has become the regular opening game. Other athletes who have indicated plans to return include Bobby Lane, Bill Smith, Jim Wood, Bob Budlove and Willis McCauley.

Also expected back is former Green Devil manager Jim Dunn who will direct the 1959 version of the Alumni team. An Alumni spokesman said last week that the team was hard at work in practice and intended to reverse last years' 102 to 45 RPI win.

No Starting Lineup

Coach Edward P. Allen has not released his starting lineup but veterans Bill Nunnally, Steve Peeples and Captain Gene Bourne are expected to see heavy duty along with Tom Davies, a former Randolph-Macon cager who transferred here for his senior year.

Others who are expected to see plenty of action are freshman forward Jessie Martin, junior guard Ernest Wilkenson and forward Bill Woodson.

Coach Allen also has Doug Loughridge, Marshall Vaughn and Robert Terrell ready for opening game action.

The RPI-Alumni game is scheduled to start at 8 p.m. with admission prices set at 50 cents and \$1. All proceeds from the game will go to the scholarship drive.

Meet a Devil!

RPI Guard Peeples Is Allen Mainstay

By Bill Jamerson

Sophomore Steve Peeples, one of four returning lettermen on RPI's basketball squad, is expected to be a mainstay for the Green Devils again this season. The 5 foot-11 inch guard presently resides in Jacksonville, Fla., although he formerly lived in Richmond.

Peeples, who weighs 155 pounds, graduated from Robert E. Lee High School in Jacksonville, where he received letters in basketball and baseball. He is majoring in recreational leadership and would like to join the recreation department of a small town school after he graduates from RPI. He is a brother of former Green Devil star Ed Peeples.

Steve, only 19, could be one of the Devil's more effective scorers this season. He is the possessor of a deadly two-hand set shot, which is fast becoming one of basketball's forgotten weapons in this age of jump shots, hook shots, dump shots and whatnot. A good set shot artist can sometimes bring the opposing team out of a zone defense and allow the taller men on the team more shots under the basket.

He Jumps, Too

Peeples, however, also has one of the more effective jump shots on the team. And he is rated as a good ball handler.

Regarding the team chances for the coming season, Peeples said, "I think that we'll have more hustle and more spirit than we had

last year. We'll also have more teamwork.

He said that he thought the chances were good for a winning season this year, but that next year should really be a banner year for the team.

"Next year we'll have practically everyone back from this year's team, and the freshmen will have gained that much needed experience," he said.

Five Students Receive Credit For TV Class

Five students are getting credit from RPI for getting up at 6:30 a.m. every week day and watching television.

They are enrolled in a modern chemistry course being taught at that hour over a nationwide TV hookup and aired locally by WXEX-TV. The program is called "Continental Classroom."

The students are: John Cayton, electronics engineer at Fort Lee; Thomas Gray, laboratory technician with Halifax Paper Company; Mother Cocur Marie Schuler, mathematics teacher at Mary Mount School; William Suther, engineer for C&P Telephone Co., and William Garnett Jr., Manchester High School senior.



The Green Devils, from left to right, are Tom Davies, Bill Wagner, Jack Pack, Bill Woodson, Bill Nunnally, Captain Gene Bourne, Jessie Martin, Doug Loughridge, Ernie Wilkinson and Steve Peeples. In the center is coach Edward P. Allen. Not present when the picture was taken were Marshall Vaughn and Robert Terrell.

Omar Khayyám writes a new jingle



Old Omar has come up with another corker of a couplet. Freely translated from the Persian:

**It's what's up front that counts
If it hasn't got it there it hasn't got it**

True, the lines don't scan. But what do you expect from a tent-maker—the perfect rhyme of "Winston tastes good like a cigarette should"?

We'll admit that something may have been lost in the translation. But when it comes to Winston, *nothing* is lost in the translation of rich, good tobacco taste. That's because up front of a pure white filter Winston has Filter-Blend—a special selection of mild fla-

vorful tobaccos specially processed for filter smoking. Winston is *designed* to taste good. Or, as Omar puts it:
The Moving Lighter lights;
and having lit,
Flicks off. Then you draw on IT,
And bit by bit smoking pleasure mounts;
With Filter-Blend up front,
Winston's got what counts!

Social Work School Sponsors Institute

An institute for supervisors of students offered by the School of Social Work last week brought supervisors from a wide area ac-

Design Students Hear Authority On Flooring

A floor is more than just something to walk on, says William Gold, international authority on floor covering.

Gold, the creator of the floor in Radio City Music Hall, spoke last week to approximately 75 persons in a gathering sponsored by the interior design department.

"The treatment of floors is important as they provide a foundation for the room's decor and focus attention on important pieces of furniture through color, warmth and texture," Gold told his audience consisting of members of the Virginia chapter of the American Institute of Decorators and RPI's second and third year Interior Design students.

After giving a brief history on the use of floor covering Gold, who has been creating floors for 39 years, explained and displayed the many patterns and materials which can be combined to make a floor attractive as well as durable.

Chorus to Appear On Television

The Choral Group here will make its first television appearance of the year on Thanksgiving day. The singers are to be the guests of "Studio Party," an audience-participation show presented daily over WRVA-TV from 9:30 to 10 a.m.

Under the direction of Mr. L. Wayne Batty, the chorus will sing "The Paper Reeds by the Brooks," from *The Peaceable Kingdom* by Thompson, and "Praise Ye the Lord" by Donato.

RPI Instructor To Give Recital

Mr. Lawrence Robinson, RPI organ instructor, will give a recital at Saint Stephen's Episcopal Church, 6006 Grove ave., at 8:30 p.m. December 1.

The program will consist of seven secular works by such composers as Buxtehude, Bach, Bingham, Langlais, Franck and Mulet. The concert is open to the public.

cording to Dr. George T. Kalif, director of the graduate School of Social Work.

The institute, in its fourth year, is offered annually to social work supervisors through a grant from the National Institute of Health, the Public Health Service of the Department of Health, Education and Welfare. The purpose of the institute is to bring together school supervisors in order to review various phases of supervision and to improve methods of showing social work students how to active the professional attitude necessary to help people.

Under the grant, the school receives funds for institutes, salaries of faculty members, travel expenses, traineeships and social lectures.

The institute was directed this year by Mrs. Helvi Boothe, former director of case work in the Menninger Clinic in Topeka, Kansas.

The School of Social Work is a charter member of the Council on Social Work Education, which is the accrediting association for professional schools of social work.

BSU Members To Attend Meeting

Marion Jones, a senior social science major will be the Richmond area representative to the Virginia-North Carolina International Student Retreat in Williamsburg November 26-29.

The retreat, being conducted under the auspices of the Baptist Student Union, is designed to give American and foreign students an opportunity to become better acquainted.

Lecture periods and informal discussions will be emphasized during the retreat.

Patricia Ramsey, senior in the department of elementary education, will also attend the retreat.

Class Rings on Sale Starting Tomorrow

Class rings will be on sale tomorrow and Monday at the Student Government Association office which is next to the office of the Dean of Students in the Administration Building.

Students have a choice of six stones, cut or smooth, and the boys can get one of two ring weights.

Prices range from \$26.02 to \$40.54. A deposit of \$15 is required, the rest is payable c.o.d. The rings will also be on sale after Thanksgiving.

Council

(Continued from Page 1)

side." He also said such action would impose an undue hardship on night students.

Buchanan countered that they (night students) were the "worst culprits," although he added that a maid is employed to clear tables during the day and such is not the case at night.

Student Habits

Bob Nitchie, SGA Treasurer, told council that the executive council hoped the closing, or threat of closing, the Rotunda would get students in the habit of using trash receptacles instead of cluttering the tables. "This habit will carry over after the threat is removed, we hope," he said.

A suggestion to remove the tables from the Rotunda was rejected because this would eliminate ashtrays, and so cigarette stubs would be added to the trash on the floor.

R.P.I. STUDENTS

*you are invited to try
our delicious real Italian*

Pizza Pies

Spaghetti

and our specialty

THE FAMOUS GREEK SALAD

a treat to your taste

All of our meals are well prepared
and reasonably priced

VILLAGE RESTAURANT

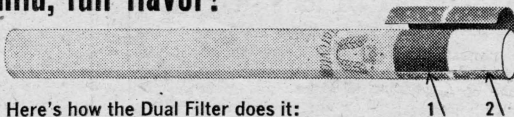
HARRISON & GRACE

6 a.m. - 12 p.m.

DUAL FILTER DOES IT!



**Filters as no single filter can
for mild, full flavor!**



Here's how the Dual Filter does it:

1. It combines a unique inner filter of ACTIVATED CHARCOAL...definitely proved to make the smoke of a cigarette mild and smooth...
2. with an efficient pure white outer filter. Together they bring you the real thing in mildness and fine tobacco taste!

**NEW
DUAL
FILTER** *Tareyton*
Product of The American Tobacco Company "Tobacco is our middle name" (©A. T. Co.)

Rx

Where Allen Meets Grace...

**Precision is ever
our watch-word**

In compounding prescriptions, your registered pharmacist weighs, measures and mixes all the ingredients exactly as ordered by your

doctor. Medicines are placed in proper containers and labeled with directions; recorded in our file.

PROMPT DELIVERY

Be it a snack or a meal... you will be delighted with the excellent food served in our Shenandoah room.

Just Around the Corner from Sears and Food Fair

**Foy's
PHARMACY** EL3-2342

Grace St. at Allen Ave.