

PROSCRIPT

Second-class postage
paid at Richmond, Va.

RICHMOND PROFESSIONAL INSTITUTE
Of the College of William and Mary

Published weekly (during the
school year) except during holi-
days and examination periods.

Vol. 40—No. 13

Richmond, Va., Friday, February 19, 1960

Tel. EL 5-9133

'B' Stands for Beauty

Burroughs, Bishop, Bond, Boxley Are Sweethearts

By Pat Hensley

Class sweethearts and attendants were selected Friday afternoon.

The four sweethearts and eight attendants, chosen at a tea given by Mrs. George Oliver, will be members of the 1960 May Court.

The Sweethearts, chosen from 20 finalists, are: senior—Janet Bond, commercial art major from Selma, N. C.; junior—Brook Burroughs, drama major from

Easton, Penn.; sophomore—Alice Boxley, interior design major from Asheboro, N. C.; and freshman—DeeDee Bishop, fashion illustration major from Marietta, Ga.

Attendants to the sweethearts are: seniors—Lucy Harris, distributive education major from Greenmoor, N. C. and Dixie Kegley, fashion illustration major from Decatur, Ga.; juniors—Frances Graham, fashion illustration major from Dunn, N. C., and Carolyn Owens, commercial art major from Bay Island; sophomores—Walta Chandler, drama major from Clifton Forge and Brenda Whitehurst, commercial art major from Charlotte, N. C., and freshmen—Sue Clotzman, business major from Alexandria and Emmy Lee Mason, Fine Arts major from Halifax.

The committee, composed of Mrs. Oliver, Miss Mary Lou Wellman, associate professor of retailing, and Mr. Maurice Bonds, director of the fine arts department, spent 30 minutes choosing the five finalists from each class from the 10 nominees selected by a preliminary committee of students last week.

The judging began at 3 p.m. with the senior class and ended at 5 with the sophomore class.

First the contestants were introduced to the judges and were served tea in the dining room. May Queen, Betsy Holt; Maid of Honor, Judy Beall, and Marion Kensey, editor of the Cobblestone were hostesses for the tea.

While being served refreshments, the girls were judged on personality and poise. Further judging continued in the provost's

(Continued on Page 4)



Janet Bond
Senior Class Sweetheart

Drama Alumni Form Local Actors Group

Alumni of the Department of Dramatic Art recently formed an acting group, RPI Actors Alumni. Play proceeds will go toward a scholarship fund for a worthy drama student.

Officers elected at the first meeting are Frank Brooks, president; Marion Adams, vice-president; Shelia Weger, recording secretary, and C. Thomas Holloway, corresponding secretary. The group has approximately 20 members from classes 1956 to 1959.

Mr. Holloway, technical director for the drama department, will direct the first production, "The Tender Trap," by Max Shulman and Robert Paul Smith. It will be presented April 13, 14 and 15 in the Shafer Street Playhouse. Tickets will be 75 cents for students and \$1 for others.

Mid-Winters And Snowflakes Are Poor Mixers

Snow and the annual Mid-Winters dance seem to have something in common and they prove a poor mixer. For the second time they have both come on the same day.

Two years ago one of the biggest snows of the winter began on the Saturday afternoon of the day Mid-Winters was scheduled. That time the dance was postponed.

Last Saturday snow came again but didn't seem severe enough to cancel the dance.

Bill Ayers, junior class president, said the dance was not called off this time because it was felt that many boarders lived close enough to the Mosque to have a fairly good turnout. But the desire to avoid postponement complications cut attendance almost in half. Only about 75 couples showed up according to Ayers.

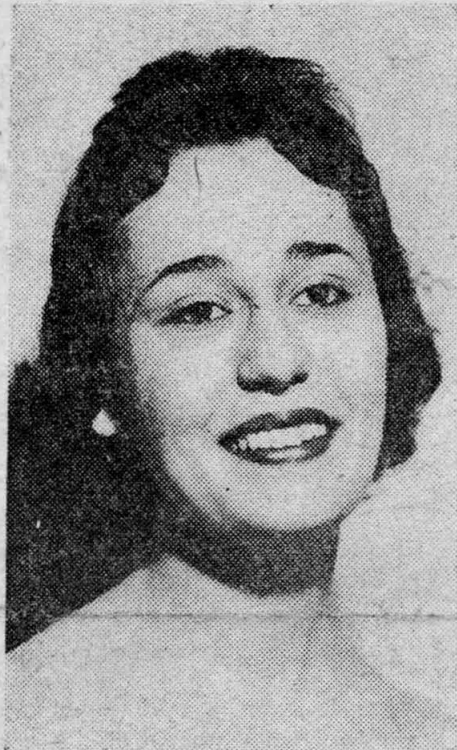
So there was no ring figure, as had been planned, because most of the participants were among the snowed-in day students.

Proscript On Friday

The Proscript will be published on Fridays this semester instead of Thursday.

The paper is now operating on a new production schedule which has a Monday noon deadline.

Although the Proscript is put out primarily by Journalism students work on it is open to anyone.



Brook Burroughs
Junior Class Sweetheart



DeeDee Bishop
Freshman Class Sweetheart



Carpenter Photos
Alice Boxley
Sophomore Class Sweetheart

Musicians Meet Here Tomorrow

Music education majors from 10 Virginia colleges have been invited to meet here at 10 a.m. tomorrow in room 203 of the Hibbs Building.

The first hour of the meeting will be devoted to a series of performances by students from the various colleges. RPI will have three performers on the program.

They are Sheppard Trevvett, who will play a Handel sonata on the violin; Ernest Bullington, who will play Chopin's "Revolutionary Etude" on the piano; and Mary Gentry, who will sing "Non Posso Disperan" by S. DeLuca.

Following the musical program will be an informal panel discussion on "Student Teaching." Each of the participating colleges will send a representative who will explain the student teaching program of his college or department.

Representing RPI will be John Winn. Fred Clements, Accidental club president, will act as moderator.

At 2 p.m. performers and panelists will go to Douglas Freeman High School, Three Chopt rd. at Ridge rd., to observe the All State High School Chorus Clinic under the direction of Mr. Randall Thompson.

SGA Accepts Plan To Hire 'Name' Band

Student Council this week accepted a plan to hire a "name" dance band for the May Dance.

A contract is being negotiated with the Richard Maltby band, best known for its background music for the film, "The Man With the Golden Arm."

The cost of the band will be \$1,500.

An administrative requirement was that each class and the SGA guarantee \$300.

Series of Movies

Council also unanimously approved a plan to show a series of re-runs of well known movies. The movies will be shown on campus on weekends at a 50 cents admission charge.

The movies included in the series selected are, "Caine Mutiny," "From Here to Eternity," and "Picnic." Jerry Bradshaw SGA President told the Proscript that the first movie will be shown within a month. According to Bradshaw there were two primary reasons that prompted the decision to show movies on campus.

Two Reasons

1. To raise money to go towards the SGA's \$300 guarantee for the band.
 2. To bring more students together for activities on weekends.
- Council also approved bids for the dance at an assessment of \$3.00 to paid class members and \$4.00 to non-paid members. Night school and part time students will be allowed to attend at the \$4.00 fee.

This will be the first time in several years that students who

have not paid their class dues will be able to attend a school dance. The extra \$1 will be assessed the non-paid members because they have not contributed to the \$300 guarantee given by each class. The decision to permit this came after a 30-minute debate.

Several representatives contended that students who have not paid their dues should not be allowed to attend. "They should have paid their class dues at the beginning of the year," said Bob

(Continued on Page 4)

Articles Accepted For Supplement

Don't Forget . . .

The Proscript is now accepting short stories, sketches, poems, and art work for its spring Literary Supplement. Deadline is March 14.

Material may be turned in at the Proscript office, third floor of the Administration Building or in the Proscript box in the main lobby of the Administration Building. Art work may also be left at either of those two places or turned in to Paul Steucke, art editor of the paper.

Additional information may be obtained from Carole Sandy, editor of the supplement or from the Proscript office.

Semester Enrollment Drops in Schools

Tentative enrollment this semester in day school is 1,810, a decrease of 250 students from last semester's enrollment of 2,060.

In night school the tentative enrollment is 1,755, a decrease of 500 from last semester's enrollment of 2,272.

Mrs. Ethel B. Riebe, registrar, said the decrease was normal. Mr. Melvin Fuller, night school director, said that a large decrease in night school enrollment was also normal.



Carpenter Photo

SNOW QUEEN—Last Saturday's snow inspired these coeds to create another RPI queen. Left to right, Chris Adams, Joanne Price, Katy Heinz, and Lois Weintrob.

PROSCRIPT

901 W. Franklin Street, Richmond, Virginia

Represented for National Advertising
by National Advertising Service, Inc.,
420 Madison Ave., New York, New York.

Member:
Associated Collegiate Press
Virginia Intercollegiate Press

Robert Boswell, Editor
Bobbie Bennett, Feature Editor
Paul Steucke, Art Editor
Bill Jamerson, Sports Editor
Malcolm Carpenter, Photography Editor
Vicki Sharpe, Business Manager

'Name' Band?

If Student Council's plan to bring a "name" band here for the May Dance materializes, and all indications are that it will, it will be the most welcomed action taken by any RPI student government in a long time.

In addition, the decision to sponsor re-runs of well known movies on campus are commendable. (See story on page 1.)

These two steps seem to be proof that the SGA is finally getting around to doing something other than just holding meetings.

Credit for initiating these two projects goes to Bob Buchanan and Judy Waldorf, who recently resigned as SGA president and vice president, respectively.

The follow-through is now in the hands of President Jerry Bradshaw and newly installed vice president Karan Harshbarger.

Although the success or failure of the dance project will be primarily the responsibility of these two, it is not their's alone.

Unless this immense undertaking (at least it's immense for RPI) is met with enthusiasm not witnessed before on this campus, it will turn into a failure.

A Winning Team

A loud cheer for the Devilettes and their coach Miss Nancy Alexander for producing the best girls basketball record in the history of RPI.

After their surprise victory over William and Mary Tuesday, the Devilettes face Chowan, N. C. tomorrow boasting a fine 9-3 mark.

Miss Alexander, now in her third year as RPI girls athletic director, has done a highly commendable coaching job.

The ability the team showed Tuesday in being able to pull itself together after a miserable four-point first quarter, and the almost flawless pass patterns exercised, are examples of excellent coaching.

Although the girls rightly attribute their success to good team work it would be only fair to point out two additional outstanding reasons for the 9-3 record.

Those reasons are Barbara Wilke and Joan Moody. Barbara, a tall blonde veteran with an almost unguardable jump shot is unquestionably the team's most valuable pointmaker. She went into Tuesday's game with a 21-point average and scored 26.

Joan, a freshman, and a fine ball handler, also has a deadly set shot from just outside the key. She has averaged 13 points in nine games.

Alert playing by forward Myrt Crowe has provided the depth necessary to any winning team.

The tall guards, Kackie Bolger, Suzanne LeGore and Carolyn Hodges have also done their part in making the season a winning one.

The Devilettes close out their schedule tomorrow against Chowan. For those who haven't been fortunate enough to see a winning team in action this year, here's your chance.



Miss Nancy Alexander
Devilettes' Coach

Campus Calendar

February 21—Guitar Concert, Shafer street Playhouse, 8:00 p.m.
February 22—S.S.E., 816 Park, Room 33, 7:30 p.m.
February 23—Fine Arts Auction Sale, Shafer street Playhouse, 7:30.
February 25—Westminster Fellowship, Music bldg., 6:00 p.m.
February 25—B.S.U., Hibbs bldg., 5:30 p.m.



Carpenter Photo

MODERN DANCE CLUB—This group of RPI students is to perform at the Virginia Museum tomorrow. Clockwise, starting foreground is Jim Sellers, Donna Dulles, Barbara Jones, Cole Waddell, Carey King, Bert Clark, Mary Sue Breckenridge and Generva Bell. In the center is Sy Shames.

Choreography Is 'On The Beach'

Modern Dance Club in Festival

By Bobbie Bennett

RPI will be one of 13 colleges to participate in the Modern Dance Festival, which will be held at The Virginia Museum of Fine Arts and Westhampton College tomorrow.

The Modern Dance Club of RPI under the direction of Mrs. Gertrude Godwyn Bunzel plans to offer an original choreography entitled, "On the Beach." The music to be

used for the background of the number was composed by Bernstein and Purcell. The Dance is designed to illustrate how a few survivors of an atomic explosion re-unite and create a new humanity.

Those participating in the presentation are Genevra O. Bell, Mary Sue Breckenridge, Burt Clark,

Donna Dulles, Barbara Jones, Carey King, Jim Sellers, Sy Shames and Cole Waddell. Thomas Hamme is stage manager.

Day-Long Festival

The schedule for the all-day festival includes a master class for all participating colleges, which will be held at Westhampton College at 10 a.m.; a lecture demonstration by Valerie Bettis at 2:15 p.m. in the Virginia Museum Theater and the performances by each college at 3 p.m. at the Virginia Museum Theater.

Valerie Bettis is a well-known modern dance artist whose most famous dance role was the Tiger Woman in "Inside U.S.A." She is appearing at the Museum tonight at 8:30.

Tickets to the lecture, demonstration and the individual performances may be purchased for 75 cents at the Museum box office.

Cellar Dwellers

Students Go Underground For More Room, Less Dough

By Charles Bryant

Many RPI students walk downstairs to get to their apartments.

The cellars, particularly under the larger houses on Park, Grace and Franklin streets, provide maximum room at a minimum cost. Most basement apartments are furnished. If, however, you are a man of vision and wish to start from scratch and you can convince the home-owner that you are sane and sincere in your wish to live in his basement then the furnishing and decorating can be done by you.

Most cellar dwellers are delighted with their havens. One roomer (who wishes to remain nameless) says he wouldn't live anywhere else.

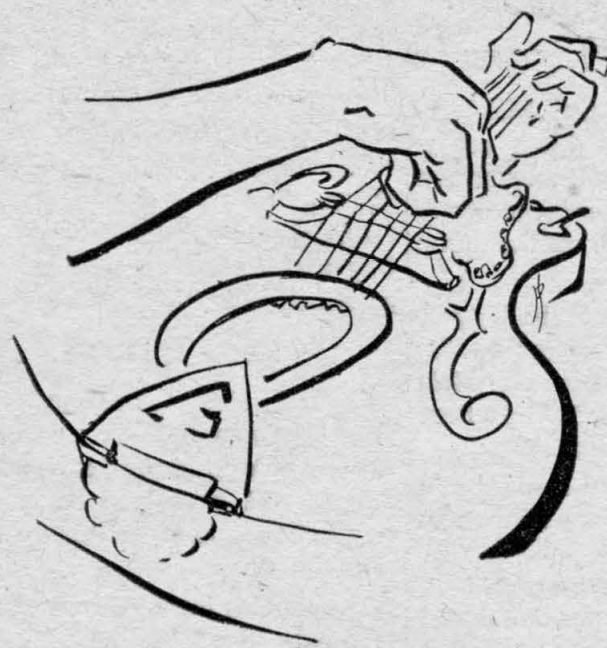
"There is a minimum of noise down here, and I have my own entrance so that I can go or come as I please—besides the rent is cheaper," said Nameless.

His basement is under a large edifice on Park ave. and contains a kitchen, sleeping, and living room area, all separated by split bamboo shades. "This," my host said as he opened the door concealing a combination bathroom and coal bin "is the reason for the name of my place." His apartment is called The Coal Mine.

In the interest of truth it must be stated here that some cellars do have drawbacks. You can't keep anything clean because coal dust and mold, that grows in abundance in damp cellars, covers everything. If it rains you may find yourself sloshing about in a foot of water. Mice, rats, moles, and bugs of assorted kinds might be your roommates.

In winter, basements are cold, damp and malodorous. Only with

the use of several good heaters can things be made bearable. I am told by leaving open the door joining the basement with the upper stories a little extra heat can be acquired. But for summer school students, basement quarters should be ideal.



a
guitar concert
by

Julian
Cox

sunday, february 21, 8:00pm
shafer street playhouse

Film Tonight

A surrealist film, "8 x 8," will be presented by the Commercial Design Club tonight at 7 o'clock, room 303 and at 8:15, room 403, Hibbs building. Admission for non-members is 75¢.

Season-Enders

Devils Play Pembroke Here

RPI closes out its basketball season with games tonight and tomorrow night here against Pembroke State Teachers College, of Pembroke, N. C. Pembroke won the annual New Bedford Seafood Tourney this year in which RPI participated.

Last week RPI found the going rough at the Franklin street gym, losing decisions to two of the Little Eight's top two teams—Bridgewater and Norfolk William and Mary.

Not only did the Green Devils have to face two of the top teams, they also had to face the state's two leading scorers—Jim Reedy of Bridgewater and Leo Anthony of Norfolk William and Mary.

The Green Devils jumped off to an early lead against Norfolk William and Mary but were overcome in the closing stages of the first

half as Leo Anthony and Bobby Hoffman led the Braves to a 35-31 advantage.

The Braves, with Anthony throwing in 17 points, rang up a 17-point spread in the second half. This was later cut to the final 82-71 margin as Captain Gene Bourne threw in 13 points in the second half to help cut the final deficit.

Bourne led the Devil scoring at-

tack with 19. Bill Nunnally chipped in with 12, and Doug Loughrige and Steve Peebles each added 11.

Anthony and Hoffman led the Braves attack with 28 and 19 points, respectively.

Jim Reedy, the state's leading scorer, pitched in 43 points here Saturday night to lead Bridgewater to a 88-66 triumph over the Green Devils.

The Green Devils held a 41-38 half time lead over the Eagles as they controlled both backboards.

This lead was short lived however, as Reedy hit five straight buckets and 12 out of 13 for 29 points in the second half.

Three Devils were in double figures—Bill Nunnally and Bill Parker had 13 and Tom Davies tallied 11.

The win gave Bridgewater a 14-3 over-all record and left the Green Devils with a 6-13 mark.

Girls Upset W&M, 50-30; Wilke Gets 26

RPI's Devilettes, again paced by their top scorer, Barbara Wilke, who got 26 points, rolled to an easy 50-30 upset over William and Mary here Wednesday afternoon.

A crowd of about 75 students watched the Devilettes, trailing 9-4 at the end of the first period, forge ahead by 32-19 at the close of the third quarter.



Barbara Wilke
Top Scorer



Joan Moody
Deadly Set Shot

Devilettes' Last Game Set Tomorrow

RPI's Devilettes will wind up their 1960 basketball season tomorrow afternoon when they entertain Chowan Junior College from Murfreesboro, N. C.

Two of RPI's forwards will be winding up their first full season for Coach Alexander's sextet. Forwards Joan Moody and Barbara

Undefeated All Stars Lead League

Steve Peebles' undefeated All Stars and the Monogram Club scored important wins in the intramural basketball league last week.

The All Stars, with a 3-0 record, now lead the league by one half game over the 712 Franklin st. Dorm and the Day Students, which are deadlocked for second place with 3-1 marks.

Last Monday, the 712 Dorm soundly trounced the Engineers, 61-42, in the first game. Bill Thompson and Dennis Lee paced 712 with 22 and 17 points, while Bill Gohen also tallied 17 for the Engineers.

In the Monday nightcap, the Monogram Club avenged an early season loss by downing the Day Students, 71-36.

Don Kloske's 20 point effort was the night's high; Jimmy Craven pitched in 19.

On Tuesday, February 9, Tom Weedon's 26 points led the Journalism team to its first win, at the expense of the Lafayette Dorm, 48-28.

Wednesday night, the All Stars

(Continued on Page 4)

Wilke, both newcomers, have contributed heavily to the Devilettes' season success.

Joan, a graduate of Midlothian High School, is regarded by Coach Alexander as one of the best basketball prospects here in several years.

Barbara, a seven-year veteran of AAU basketball, is described by Coach Alexander as "the greatest thing I've ever seen around here."

Both Joan and Barbara exercise good ball-handling, and their high-scoring average has paced the RPI six to a 9 to 3 season record.

Barbara has averaged 21 points per contest while Joan, who stands a tiny 5'4", has compiled a 13 point average per game during the past year.

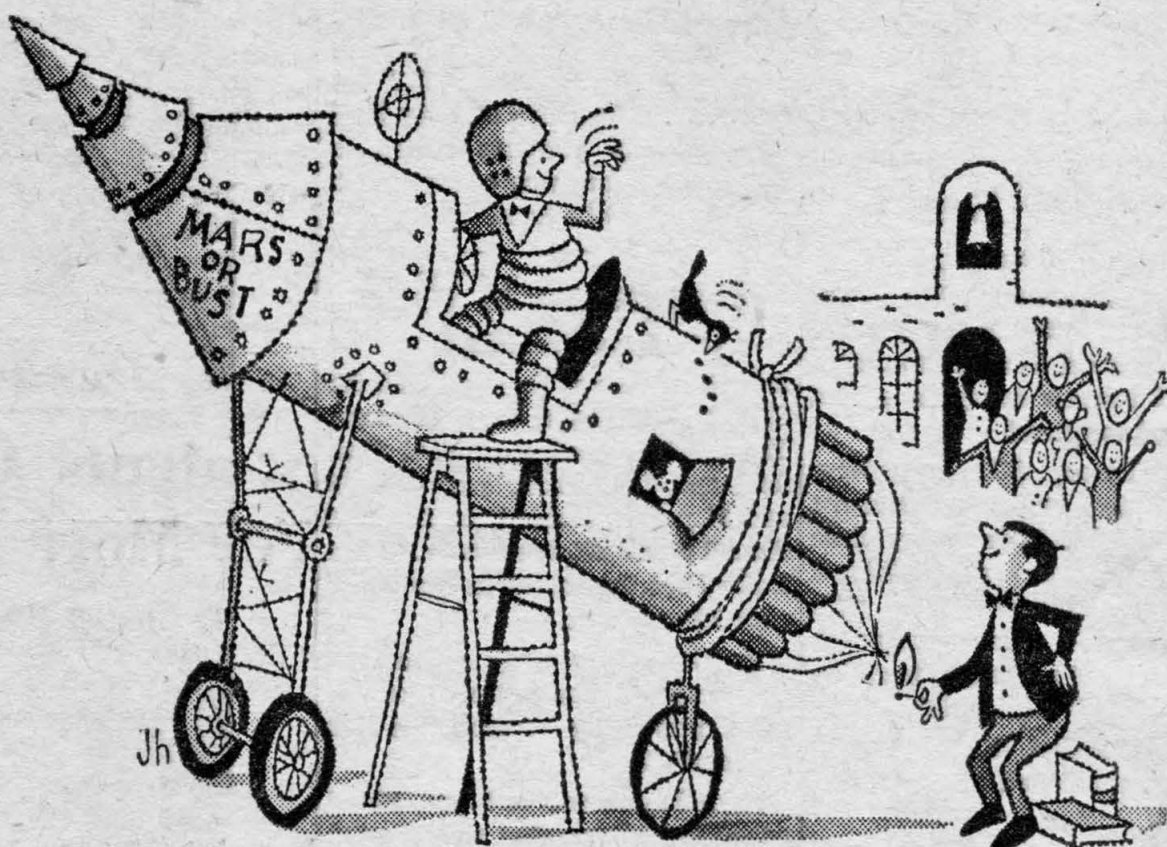
In their latest outing, RPI dropped a 60-to-34 decision to the Bridgewater Eagles. Down 28 to 12 at the half, RPI was never in the contest. Barbara paced the sagging offense while guard Carolyn Hodges led the Devilettes' defense. The loss was the third of the season against nine RPI wins.

The Devilettes traveled to Lynchburg February 10 to play Lynchburg College and won, 51 to 32.

Joan was high scorer with 23 points, while Barbara had 22 points.

Randy Wells Elected By Sports Car Club

The Collegiate Sports Car Club of RPI elected Randy Wells president and Chris Wink vice-president last week. Second vice-presidents are Harry Liles and Jim Gannon. Carol Owens and Mary Carter were selected secretary-treasurer and corresponding secretary, respectively.

Do You Think for Yourself?
(TEST YOUR WITS ON THESE QUESTIONS*)

The statement "Experience is the best teacher" is (A) the faculty's confession of failure; (B) a dogmatic way of saying you can learn by doing; (C) an excuse for trying anything once.

A ☐ B ☐ C ☐



If someone called you a beatnik, would you (A) insult him right back? (B) ask him if he knows what a beatnik really is? (C) thank him for the compliment?

A ☐ B ☐ C ☐



If you saw a dinosaur roaming around the campus, would you say, (A) "Big, ain't he?" or (B) "Where's the movie playing?" or (C) "This place is sure out of date!"

A ☐ B ☐ C ☐



Do you base your choice of a cigarette mostly on (A) what your friends say they like? (B) what your own judgment tells you is best? (C) what the makers say about their product?

A ☐ B ☐ C ☐

It's a wise smoker who depends on his own judgment, not opinions of others, in his choice of cigarettes. That is why men and women who think for themselves usually smoke Viceroy. They know only

Viceroy has a *thinking man's filter*—the best filter of its kind ever developed . . . the filter that changed America's smoking habits. And only Viceroy has a *smoking man's taste*.

*If you checked (B) on three out of four of these questions, you're a high-test character—you think for yourself.



Familiar pack or crush-proof box.

The Man Who Thinks for Himself Knows—
ONLY VICEROY HAS A THINKING MAN'S FILTER...A SMOKING MAN'S TASTE!

© 1959, Brown & Williamson Tobacco Corp.

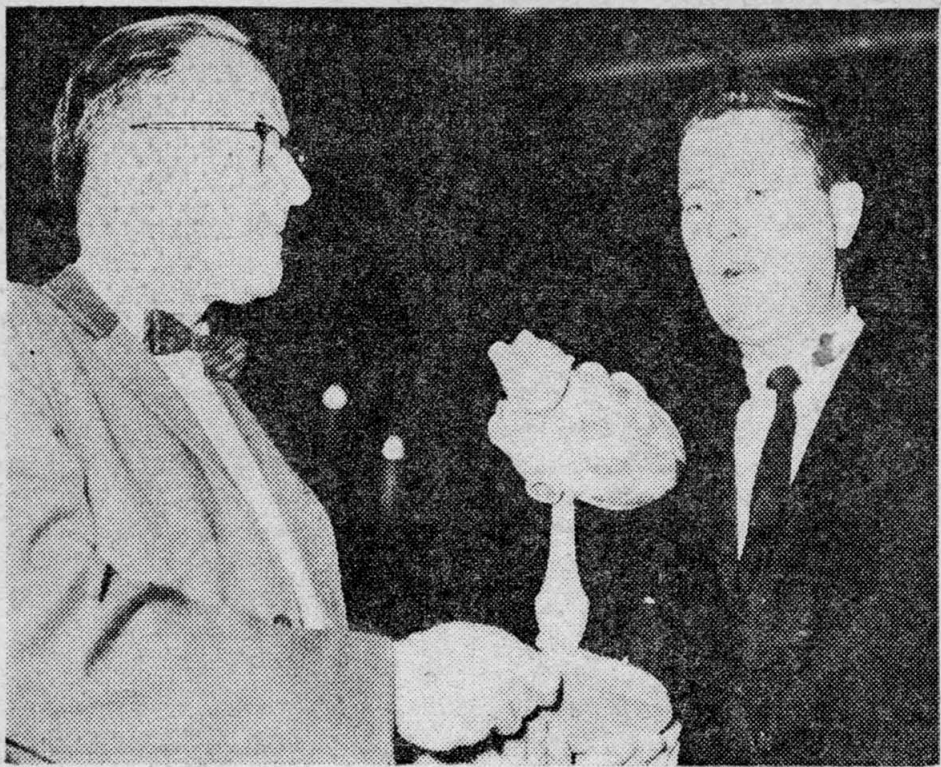
Close out SALE

Records	Were	Now
45 rpm	98c	19c
Long Play	\$2.00	\$1.00
Stereo	\$2.98	\$1.95

ALL NEW Records

Smith's Book Store

937 W. Grace St.



Model of Heart Presented by J. B. Springer
Dr. Wade O. Stalnaker (right), Accepts It

Wise Photo

Plastic Model of Human Heart Given to RPI Department

The Virginia Heart Association has presented the Graduate School of Rehabilitation Counseling with a plastic model of the human heart. The heart, which can be disassembled for study, is to be used in medical information classes.

Dr. Wade O. Stalnaker, director of the Graduate School of Rehabilitation Counseling, accepted the model from Jennings B. Springer,

director of rehabilitation for the association.

Said Mr. Springer, "When one disease is responsible for more than half of all deaths in the nation, it certainly deserves the attention of every man and woman. The national death rate from heart disease and circulation is 54 per cent. In Virginia, it is 53.3 per cent. . . . Much has already been done to help cardiacs return to their accustomed way of life; much more needs to be done."

'Name' Band

(Continued from Page 1)

Nitchie, SGA treasurer. But others argued that, on an undertaking of this importance, in order to obtain the most success everyone should be allowed to attend.

Ysella Perea, SGA secretary, said that these students should not be asked at this time to pay class dues and then pay an additional \$3.00 to attend the dance. "We want as large a turn-out as possible. We should change tradition this one time," she added.

In other action, Karen Harshbarger was installed as SGA vice-president.

Near the end of the meeting, Bradshaw, who took office two weeks ago, unveiled a stinging attack on the laxity of the representatives to inform their organizations of what the SGA is doing.

"If you're not doing your job you might as well leave," he said. "I don't think anything we do in here should be kept secret from the students—we are the students. Preach some 'hellfire and damnation' to your club members," he asserted.

"There's been a lack of interest in Student Government and it's our fault." Bradshaw also called for closer observance of parliamentary procedure during meetings.



We Stock our
store with
R. P. I.
in mind.
**RAY'S 5&10
STORE**
927 W. Grace

Sweethearts Chosen

(Continued from Page 1)

living room where the girls walked in front of the judges individually and answered the question, "Where is your home town?" Final decisions were made as the girls paraded as a group.

Mr. William O'Connell, dean of students, said the judging procedure, supervised by the Cobblestone, was a marked improvement over past methods. He said the two judging panels student and faculty, were in a better position to appraise the girls than someone who is not connected with the school. He cited an incident several years ago when pictures of class sweetheart contestants were sent to Dave Garroway who lost them.

The contestants themselves were pleased with the tea party competition. Most said they preferred this informal judging to the preliminary one.

"Where Allen Meets Grace"



Your Health Always Comes First with Us

see us for
top quality
every time

Your prescriptions will have our personal and expert attention. You can always depend on us for the best of everything in first aid and sickroom supplies.

PROMPT DELIVERIES
Enjoy the finest meals served by experienced chefs daily in our beautiful Shenandoah Room.
JUST AROUND THE CORNER FROM
SEARS AND FOOD FAIR

FOY'S PHARMACY

Grace and Allen Sts. EL 3-2342

Rx

Have a real cigarette—have a CAMEL



Jack and Mary Lambie

WEST COAST SAILPLANE ENTHUSIASTS

The best tobacco makes the best smoke!

R. J. Reynolds Tobacco Co., Winston-Salem, N. C.

Come on, let's take a break
and go to . . .



Ricks

Collegiate
Inn

834 W. Grace St.