



VCU

Virginia Commonwealth University
VCU Scholars Compass

Undergraduate Research Posters

Undergraduate Research Opportunities
Program

2022

Spanish Translation and Psychometric Validation of a Measure of Acculturative Stress among Latinx Immigrants in the USA

Ria Grover
Virginia Commonwealth University

Kritzia Merced

Chimdindu Ohayagha

See next page for additional authors

Follow this and additional works at: <https://scholarscompass.vcu.edu/uressposters>



Part of the [Social Justice Commons](#), and the [Social Psychology Commons](#)

© The Author(s)

Downloaded from

Grover, Ria; Merced, Kritzia; Ohayagha, Chimdindu; Garcia-Rodriguez,, Isis; Moreno, Oswaldo; and Perrin, Paul B., "Spanish Translation and Psychometric Validation of a Measure of Acculturative Stress among Latinx Immigrants in the USA" (2022). *Undergraduate Research Posters*. Poster 399.
<https://scholarscompass.vcu.edu/uressposters/399>

This Book is brought to you for free and open access by the Undergraduate Research Opportunities Program at VCU Scholars Compass. It has been accepted for inclusion in Undergraduate Research Posters by an authorized administrator of VCU Scholars Compass. For more information, please contact libcompass@vcu.edu.

Authors

Ria Grover; Kritzia Merced; Chimdindu Ohayagha; Isis Garcia-Rodriguez;; Oswaldo Moreno; and Paul B. Perrin

Spanish Translation and Psychometric Validation of a Measure of Acculturative Stress among Latinx Immigrants in the USA



Kritzia Merced, Chimdindu Ohayagha, Ria Grover, Isis Garcia-Rodriguez, Oswaldo Moreno, and Paul B. Perrin

Introduction

- The Latinx community is the largest racial/ethnic minoritized and immigrant group in the U.S (Gonzalez-Guarda et. al, 2021).
- Various acculturative stressors after immigrating have been documented (i.e., including xenophobia, racism, and discrimination) (Pinedo et. al, 2021).
- Although several scales measure acculturative stress in Spanish-speaking immigrants, many are too extensive for community administration, lack nuanced subscales, or have not been validated in a diverse sample.
- Therefore, the purpose of this study was to translate and psychometrically validate the Riverside Acculturative Stress Inventory (RASI) for Spanish-speaking immigrants in the U.S.

Methodology

Participants

- The sample of 202 Latinx Immigrant participants was recruited through convenience sampling within various community organizations.

Measures

- RASI is a 15-item scale that measures 5 domains of acculturative stress (intercultural relations, language skills, discrimination, work challenges, and cultural/ethnic makeup of the community).
- Generalized Anxiety Disorder Scale (GAD-7) is a 7-item self-report scale that measures anxiety symptoms.
- Patient Health Questionnaire (PHQ-9) is a 9-item self-report scale that measures depression symptoms

Analysis

- A confirmatory factor analysis was conducted followed by an exploratory factor analysis.

Results

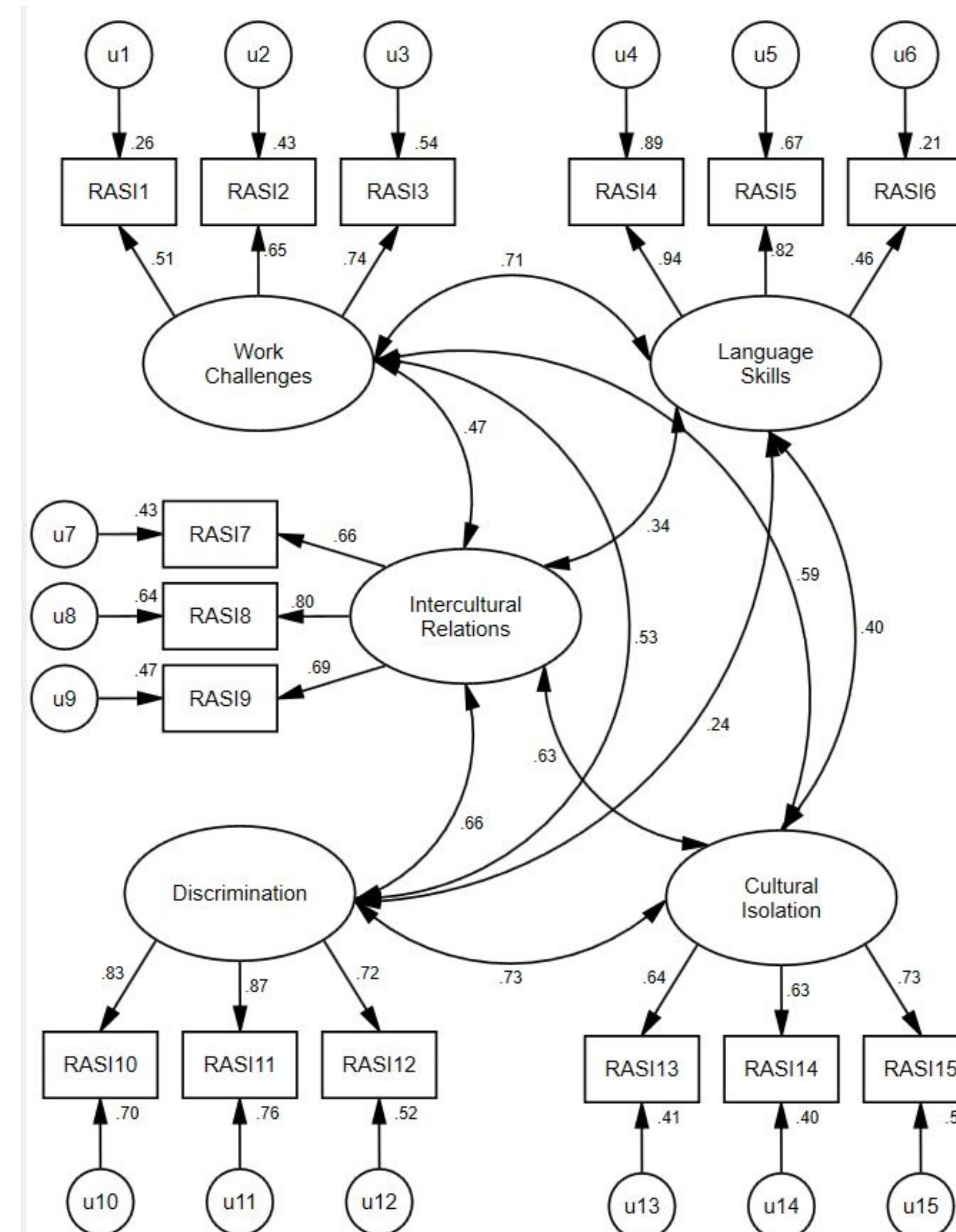


Table 3. EFA item loadings for 15-item the Riverside Acculturation Stress Inventory.

Item	Factor			
	1	2	3	4
RASI4 ^{WL}	0.96	-0.13	0.06	-0.08
RASI5 ^{WL}	0.79	-0.12	0.03	0.01
RASI3 ^{WL}	0.62	0.26	-0.09	-0.02
RASI2 ^r	0.45	0.41	-0.06	-0.10 ^r
RASI1 ^r	0.37	0.30	-0.15	0.03 ^r
RASI11 ^D	-0.03	0.91	0.02	-0.06
RASI10 ^D	0.00	0.64	0.18	0.02
RASI12 ^D	-0.01	0.50	0.13	0.24
RASI7 ^{IR}	-0.12	0.05	0.72	-0.03
RASI8 ^{IR}	0.00	0.13	0.71	-0.05
RASI9 ^{IR}	0.07	0.04	0.69	-0.05
RASI6 ^r	0.29	-0.17	0.37	0.24 ^r
RASI13 ^{CI}	-0.10	-0.05	-0.07	0.88
RASI15 ^{CI}	-0.03	0.27	0.04	0.50
RASI14 ^{CI}	0.31	0.04	-0.02	0.47

Note: Extraction Method: Principal axis factoring. Rotation Method: Promax with Kaiser normalization. Bolded values reflect items achieving simple structure loading on the respective factor. ^r reflects items that were removed because they did not achieve simple structure. ^{WL} = Work and Language Challenges; ^D = Discrimination; ^{IR} = Intercultural Relations; and ^{CI} = Cultural Isolation.

Table 4. Convergent validity.

Variable	1	2	3	4	5	6
1. RASI Short Form Total	-					
2. RASI Work and Language Challenges	-					
3. RASI Discrimination	-	0.292 **				
4. RASI Intercultural Relations	-	0.292 **	0.559 **			
5. RASI Cultural Isolation	-	0.383 **	0.584 **	0.455 **		
6. Depression	0.161 *	0.015	0.118	0.191 *	0.176 *	
7. Anxiety	0.184 *	0.083	0.135	0.220 **	0.117	0.638 **

Results/Discussion

- Results indicate that the RASI Spanish short form had similar psychometric properties to the original version validated with Chinese immigrants. The original scale was modified in order to increase its utility in Spanish and with Latinx immigrants.
- An initial confirmatory factor analysis suggested that the overall subscale factor structure was not an ideal fit for the data.
- An exploratory factor analysis suggested the retention of four subscales, each with three items, forming a 12-item Spanish RASI short form.
- As indices of convergent validity, the RASI total score was positively associated with depression and anxiety.
- The findings from the study contribute to the literature a brief and valid assessment of acculturative stress in Spanish-speaking immigrants. The RASI Spanish short form holds promise to stimulate research on the unique adversities experienced by Latinx immigrants.

References

- Gonzalez-Guarda, R.M.; Stafford, A.M.; Nagy, G.A.; Befus, D.R.; Conklin, J.L. A systematic review of physical health consequences and acculturation stress among Latinx individuals in the United States. *Biol. Res. Nurs.* 2021, 23, 362–374.
- Pinedo, M.; Beltrán-Girón, J.; Correa, Z.; Valdez, C. A qualitative view of migration-related stressors on the mental health of Latinx Americans in the current sociopolitical climate of hostility towards migrants. *J. Immigr. Minority Health* 2021, 23, 1053–1064.
- Benet-Martínez, V.; Haritatos, J. Bicultural identity integration (BII): Components and psychological antecedents. *J. Personal.* 2005, 73, 1015–1050.