

Lettermen

Return

See Page 3

PROSCRIPT

Second-class postage
paid at Richmond, Va.

RICHMOND PROFESSIONAL INSTITUTE
Of the Colleges of William and Mary

Published weekly (during the
school year) except during holi-
days and examination periods.

Vol. 41—No. 4

Richmond, Va., Friday, October 14, 1960

Tel. EL 5-9133

Review of

One-Acts

See Page 2

Mock Vote Scheduled By Paper

All RPI Students
To Cast Ballots

By Patti Jo Absher

A mock presidential election will be conducted for RPI students next week end. Ballots will be printed in the next issue of the PROSCRIPT, which is sponsoring the balloting.

Students (age will not make any difference) are asked to indicate their preference for the Conservative, Democratic or Republican candidates.

Ballot boxes will be placed in the lobby of the Hibbs building and the cafeteria from Friday through Monday, October 21.

It is believed that most students will have arrived at a choice by the date of the straw vote. The actual general election (in which persons over 21 may vote everywhere except in Georgia, where 18 is the minimum age) is November 8.

Jack R. Hunter, Journalism department director, explained that the Conservative party will be included on the mock election ballot because it was organized in Virginia and, as evidenced in letters to newspapers, has a certain amount of support in this state. Mr. Hunter noted that in conducting the mock election, the Journal-

(Continued on Page 4)



Wise Photo

OPENINGS—About 200 RPI students turned out for the first formal dance of the year held at the Mosque ballroom last Saturday night. Sponsored by the Student Government Association, Openings' decorations and refreshments were provided by the Sophomore class.

Political Year 1960

Night Course Draws Politicians, Analyst

Two political figures and a news analyst from a major news service will address a new evening class on the coming presidential election.

They are J. Calvitt Clarke Jr. of Richmond, head of the Republican Speakers Bureau; Paul Saunier, administrative assistant to Rep. J. Vaughan Gary (D-Va.); and Daniel Barnett of Washington, news analyst for the North American Newspaper Alliance.

The trio will address a new five-week, non-credit adult information course entitled "Political Year 1960." The opening session of the class will start Monday at 7 p.m. in Hibbs Building.

Mr. Saunier will discuss the Democratic Party at the first meeting Monday and again on October 31.

Mr. Clarke will present the views of the Republican Party on October 24 and again on November 7, even of the national elections.

Mr. Barnett will summarize the elections, give his views of the reasons for victory by the winning candidates and forecast the outlook for the next four years on November 14, the week following the elections.

Registration for the course may be made at the Evening College Office in the Administration Building or at the first class session. The fee is \$7.50.

Melvin Fuller, director of the Evening College, said the class was not designed to influence students in deciding which way to vote on November 8.

He said it was intended, instead, to help political fence-sitters make up their minds.

Wesley Foundation Conducts Conference

The Wesley Foundation is conducting a fall All-State Conference at VPI, tomorrow and Sunday. There will be eight representatives from VPI.

The featured speaker at the conference will be Jameson Jones, editor of *Motive*, a publication for Methodist college students.

Scheduled are recreation periods, speakers, discussion groups and Bible study sessions.

Men's Dorms Elect Officers For '60-'61

Officers of the 312 N. Shafer Street Dormitory were re-elected last Monday night after a petition signed by 31 of the 56 dorm students protested the slate of candidates presented them by a nominating committee.

The petition was circulated after the dorm members had voted on the nominees presented by the committee. The petition stated that the choice of the committee was not necessarily that of the members of the dorm.

Only one of the officers elected from the slate was put into office by the re-election.

President is Bill Buskell, a freshman commercial art student from Bristol, Tenn. Vice president is Jim Shaw, a sophomore commercial art student from Cranford, N. J. Don Huges, a freshman commercial art student from Orange, is secretary and Tom Mistr, a sophomore accounting student from Tappahannock, treasurer.

Members of 712 West Franklin Dormitory elected Donald M. Ashburn, a junior business major from Weems, president. Vice-president is Donald Blankenship, a sophomore Fashion Illustration major from Newport News. Secretary is Hilton Heflin, a freshman Business major from Stafford. Treasurer is Allen Butts, a freshman architecture student.

Plaque Is Given Business School

The Wall Street Journal has given the School of Business a plaque with the college name engraved, on which to place the name of the outstanding graduating Business student each year.

For several years the award has been a subscription to the Wall Street Journal and a silver medalion encased in plastic.

The plaque was given so that a permanent record of the annual outstanding student could be kept on display. It is presently located in the School of Business office in the Arts and Science building.

Eight Fail SGA Tests On First Try

Men's Dormitories
Seek Representation

Eight of the 33 Student Government Association representatives and their alternates who took the SGA test last week failed, it was announced today.

Besides giving the test on the SGA constitution and rules, Council announced that it is looking for a "loop-hole" in the SGA constitution to allow the two men's dormitories representation in Council.

A breakdown of the activities fee was explained, and proposals were made that: (1) flag be placed on the Shafer Street Mall flag pole and (2) the section of the SGA constitution stating that all clubs must submit a copy of their constitutions at the beginning of each school year be amended.

The eight students who failed the test and those who did not take it last week were given a retest last Wednesday night. Failure of this second test results in dismissal from SGA, said Jerry Bradshaw, Council president. All members of the SGA are required to take the test. It includes questions on rules in the Student Government handbook, and the Council's constitution, by-laws and regulations.

"My biggest gripe after grading the tests," said Bradshaw, "was that very few people knew where the Honor Code originated."

The code was established at the College of William and Mary in 1779 and has been in effect at RPI since 1925.

Upon proposal by Executive Council last week, Billy Ayers, Senior class representative, was placed in charge of looking for a "loop-hole" in the SGA constitution that would give the men's dormitories an SGA representative.

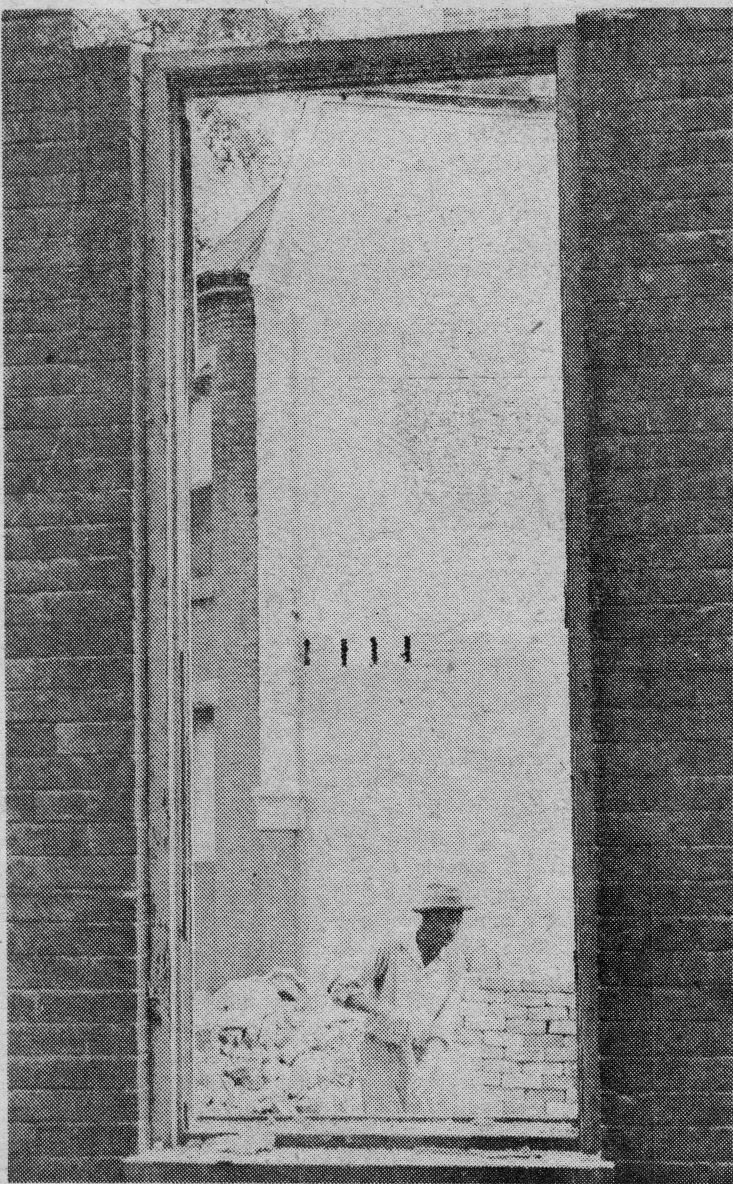
At present, the constitution reads that only organizations governed by constitutions may have representation in Council.

Zeb Conley and Cole Harrison, dormitory managers of 712 W. Franklin st. and 312 Shafer st. respectively, are investigating the possibility of forming a men's interdormitory association or a social club that would allow for an SGA representative.

A breakdown of the activities fee receipts, which total \$6,544, was presented by Dick Whitehead, SGA treasurer. The fee has been allotted as follows: class dues, \$613.50; Cobbleston, \$2,863; Drama department, \$818; dances, \$818; basketball team, \$613.50, and literary magazine, \$818.

Action on a proposal by Margaret "Dee Dee" Bishop, Sophomore class representative, to place a flag on the Shafer Court flag pole was deferred until a later date.

Further study was recommended on a proposal that would change the SGA constitution by allowing clubs whose constitutions have not changed from year to year not to have to submit a new copy to Council each year. The proposal was made by Stanley Soble, who is the Theater Associates representative.



Staff Photo

DESTRUCTION FOR CONSTRUCTION—The demolition of three buildings in the 300 block of North Harrison st. makes room for a parking lot for RPI students. Two of the buildings were acquired in 1959 and the other last summer for \$41,000.

PROSCRIPT

Represented for National Advertising by National Advertising Service, Inc., 420 Madison Ave., New York, New York. Member: Associated Collegiate Press, Virginia Intercollegiate Press, 901 W. Franklin Street, Richmond, Virginia

Susan Smith, Editor
Dave Burton, News Editor
Barbara Corbett, Features Editor
William Jamerson, Sports Editor
Nick Wise, Photo Editor
Jack Csaky, Business Manager

Parking Lot

The construction of a new student parking lot is rated among the more notable current projects at RPI.

The new lot, which will replace three old residences in the 300 block of North Harrison st., will accommodate about 30 cars, and is expected to be opened next month.

Its opening couldn't come at a better time, for numerous complaints about the lack of parking facilities have been voiced by students this year.

The parking problem itself is not new; it has been one of RPI's most acute problems over the years, particularly for the students who live in or near Richmond and have to drive to school every day.

But this year, with the construction of the \$19,000 Shafer Court across from the Hibbs Building, the situation reached its peak. This area had provided about 20 parking places last year, and upon its loss some replacement was needed.

Three old dwellings are being demolished on Harrison st. to make room for the new lot.

However, if the parking problem has been apparent for years, it is also obvious that the new lot will not alleviate the condition. More facilities are needed.

At a recent Student Council meeting, it was suggested that the Grove ave. Baptist Church might be asked to let students use its lots, as they once did.

Council President Jerry Bradshaw said that the church had barred its lot to RPI because of schedule conflicts between the school and the church. It was added that students in night classes were the chief offenders.

If an agreement could be made with the church, even one that stipulates certain hours for student parking, it would help one of RPI's oldest and most perplexing problems.

Campus Calendar

Oct. 16—Wesley Foundation meeting, Pace Memorial Methodist Church, 5:45 p.m.

Westminster Fellowship meeting Grace Covenant Presbyterian Church, 6:00 p.m.

Oct. 18—Band Concert, Shafer Street Mall, 4:00 p.m.

Oct. 20—Cotillion Club meeting, Hibbs 203, 6:00 p.m.

Jim Davis Heads Theater Associates

Jim Davis, who was elected vice president of Theater Associates last spring, is now president of the club.

Davis, a sophomore drama major, moved up when the president, Walta Chandler, failed to return to RPI this fall.

Marcy Block, a junior drama major, was elected to fill the vice presidency at a T. A. meeting last week. The other officers elected last spring for the 1960-61 season are Julia Field, secretary; Diane Hord, treasurer; and Stanley Soble, Student Government Association representative.

Top-Knot(ch) Styles Are Demonstrated

Last night the Fashion Club opened its year's activities with a visit to Chesson's Beauty Salon, where owner E. M. Chesson reviewed the fall's newest fluffs and styled several club members' hair in the latest fashion.

Mr. Chesson and his assistants demonstrated methods of shampooing, trimming and cutting to approximately 50 girls.

Club President Betsy Smith said that similar demonstration programs such as visits of a representative of the Wool Industry, a furrier, and a milliner have been planned for the semester.

German Club Sets First Dance For October 22

Pledge pins will be presented to new members at the German Club's first dance of the year, Saturday, October 22.

The dance will climax the club's annual "pledge week," during which new members will be recognized on campus. The new members, will be required to wear coats and ties, name tags and to carry bricks with the letters "GC." inscribed on them.

Club membership cards will be required for admittance to the semiformal dance, which will be held from 9 p.m. to 12:30 a.m. at the Elks' Home, 1801 West Grace st.

RPI Music Majors To Give Performance

Dorcas Campbell and Ruth Anne Christy will give musical performances for the Rockville Ruritan Club on October 27.

Sophomore Dorcas Campbell has had a wide background in singing, both professional and otherwise. She is from Fairfield.

The other half of the RPI two-some, Ruth Anne, is a Music Education major with piano as her emphasis. Also a sophomore, Ruth Anne is from Falmouth.



I Can't Help It, He Still Reminds Me of Santa Claus.

'Archy and Mehitabel' Called a Success

By Charles Bryant

"Archy and Mehitabel," the first in a series of weekly one-acts, was a delightful comedy, and it well received by a capacity-plus audience in the Studio Theater.

Archy was a cockroach who climbed on the late humorist Don

Marquis' typewriter and communicated with him by jumping on the keys. He was not heavy enough to work the shift key, and so he never used capital letters.

Richard Cadieux put over the idea of Archy in fine style despite occasional lapses in memory (a failing common to roaches). He covered himself nicely, however, and little was lost from his overall performance.

The love of Archy's life was a vampish alley cat named Mehitabel. Sharon Godsey lit into the part with claws bared. She was "toujours gai" with the special brand of loose-limbed comedy that she does so well.

All the rest: three kittens, Paulita Dillon, Merle Lynn Alley and Helen Milburn; Big Bill, Herbert Scott; and a lightning bug, Gail Miller were delightful denizens of Shinbone Alley.

John Wilson narrated this animated cartoon. Marilyn Ende directed and shaped the production to suit her own fine comic sensibilities, and in short kept things toujours gai.

Career Week

DE Students Help Promote Retailing

RPI Distributive Education students have been busy this week taking part in "Careers in Retailing Week," and there's still more to come.

"Careers in Retailing Week" is sponsored by the National Retail Merchants Association and is a contest in which different cities compete for the best series of promotions of distributive education. Richmond was the winner last year.

The usual week-long program has been extended through October to get better promotions and publicity.

One of the first events is displaying distributive education material. Three leading department stores have contributed two windows each for these displays. Most of the material was collected by RPI students.

On October 24, there will be an "action window" display in the

'Cathedral' Production New for RPI

"Murder in the Cathedral" is a new and ambitious experience for members of the RPI Department of Dramatic Art and Speech. At this time it is assured at least financial success in that tickets are sold out for October 28 and 29. Seats are still available on Saturday, November 5, however.

T. S. Eliot's spiritual melodrama about Thomas a Becket will take place in St. Luke's Church at 8 p.m. St. Luke's will be the ideal setting for the play, because Eliot wrote the play for production in a church (Canterbury Cathedral). No sets will be needed and there will be no curtains or intermissions. Candles will be used as house-lights.

Wilbur Keys, a senior and experienced dramatist plays Becket.

The choir of St. Luke's, directed by Vernon Perdue-Davis will sing 12th century music. Perdue-Davis will be assisted by John Loving, choirmaster of the church. The chorus of women of Canterbury, who carry the plot, are divided into three sections according to voice types to eliminate the sing-song affect that would result if they read as a group.

"This and original plays are the kind students of drama should do, because they are more challenging than Broadway copies," said Raymond Hodges, head of the Drama department, and director of the play.

And what does Eliot say of the tragic Becket? "... it is no tragedy for a man to become a saint. Think of it. Fifty-five years or so on earth, and then straight to heaven! That's pretty good going."

Business Club To Be Organized

Students interested in forming a student chapter of the Society for the Advancement of Management, should contact Mr. W. O. Edwards in his office, Gym F.

The society is open to all students and is new in the Richmond area, said Mr. Edwards, instructor in the School of Business.

The Society for Advancement of Management is a national professional organization of management in industry, commerce, government and education.

Career Week

DE Students Help Promote Retailing

corner window of Thalhimers, Sixth and Broad sts. Seniors will speak on distributive education from this window at noon hours and at night. At other times a tape will be played.

"Executive Day" is October 26. Selected students will work with the executives of the major department stores. Sixteen Richmond stores are taking part in this project. The students will work directly with presidents, vice-presidents, controllers, etc.

In addition to these events, two radio shows, the Dick Gillis Show and Richmond Roundtable, are part of the program. Walter Rudd of Sears Roebuck and Co. will lead the discussion on these shows.

During the past week several RPI Distributive Education graduates talked to RPI students on what their education has meant to them and their success in the professional world.

WAA Club Plans Near Completion

Plans for the reorganization of the Women's Athletic Association (WAA) are near completion, the Department of Physical Education announced this week.

Every RPI coed is eligible for membership in the WAA. Interested students may sign up on the gym bulletin board before November 1. Officers and dorm representatives to the WAA will be chosen soon afterward.

The WAA, disbanded since 1956, will incorporate an accumulative point system for rewarding members this year. For example, an RPI blazer will be the highest award given to a 1,000-point member.

Participation in any sport, varsity or intramural, will result in points for the member. Under this system, additional points may be gained by being a member of a winning team, a team captain or the winner of a single sport, such as badminton.

"The big advantage of the WAA," points out J. S. Timberlake, intramurals director, "is that mediocre players can pile up points by consistently participating in sports. It is not necessary to be an outstanding player in order to accumulate points in the WAA."

Badminton Event To Start Monday

The intramural program will be initiated next week, when a single elimination badminton tourney gets under way Monday.

This week was set aside for practice as Intramural Director, J. S. Timberlake said, "We thought not many people knew how to play or knew the rules."

Men's intramurals will be held on Mondays and Wednesdays from 4 to 7 p.m. Women's activities will take place on Tuesdays and Thursdays from 4:30 to 6:30.

Pairings will be placed this afternoon on the bulletin board in the lobby of the Gym.

Monogram Club Installs Officers

Monogram Club officers for the coming year were installed last week at the club's first meeting.

The president of the club is Gene Bourne. Club treasurer is Tommy Wright. Marvin Russell was elected as the SGA representative. Alternate Representative to the SGA is Doug Loughridge. A secretary has not been elected.

Religious Programs Set

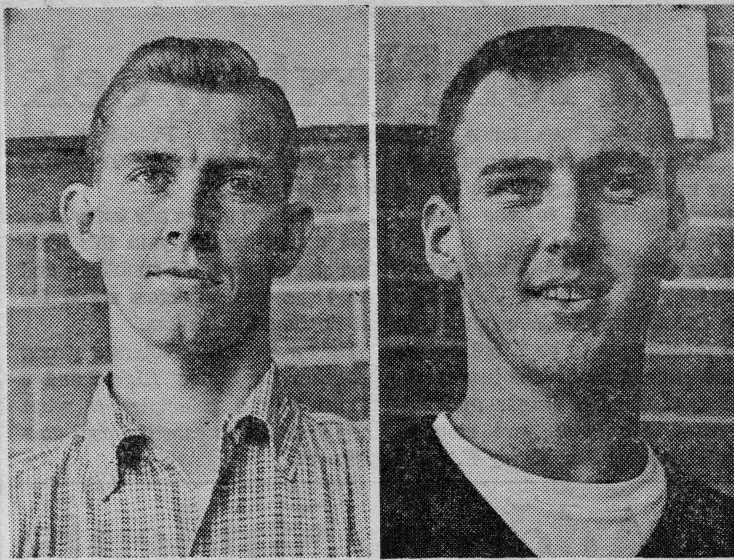
November 14-17 has been set aside as Religious Emphasis Week, to stress the religious phase of the student's education.

Monday night the program will be a panel discussion. The moderator will be Rev. Richard R. Baker II. Other members of the panel are Father Ernest Unterkoefer, Rabbi Raymond Krinsky and Dr. Charles Kraemer.

Tuesday night a lecture on "Science and Religion" will be given by Dr. Raymond Seegar, deputy assistant director for mathematical, physical, and engineering sciences of the National Science Foundation.

Wednesday the program will again be a panel discussion, moderated by Dr. William Rodenhizer. Other members of the panel are Rabbi Abraham Shusterman, Father Richard Burke and Dr. Harry Backhus.

A program of special music will be presented on Thursday night.



Gene Bourne, left and Ernie Wilkinson, right. The two are returning basketball players.

Jamerson Photo

PROSCRIPT SPORTS

The general consensus around the campus is that the 1960-61 basketball team will be improved over the outfit that compiled a 7-14 record last year. We must agree with this opinion, if only because the seven returnees from last year have improved due to the game experience they received last season.

The Green Devils came on strong during the last part of the season as they gave two of the top little Eight teams (Norfolk William & Mary and Bridgewater) close games before finally bowing.

Coach Allen stated that inexperience cost the Green Devils several games during the early part of last season and that the team should be better this year.

The team should be strengthened this year by the addition of several promising freshmen and transfers. The newcomers include George Shaheen, former Benedictine High great, Bobby Muse, who led the Group I Central District scoring race when he played for Thomas Jefferson High in 1958, and George Stone, who played for Highland Springs High School two years ago.

Basketball practice is slated to start Monday afternoon. Anyone interested in trying out for the team met yesterday in Gym 6. Coach Allen emphasized that it is still not too late for anyone who wants to try out for the team. The coach also stated that 12 positions on the team were open.

Badminton Tourney

Intramural director J. S. Timberlake announced this week that both men's and Women's intramural badminton would start next week. The tourney which was slated to start last Monday was postponed in order to give the participants more time to practice and to learn more about the game.

As of last Monday the list of people signed up for badminton, especially for the men's tourney, was very slim.

Coach Timberlake has worked hard to make the intramural program a success, but if students fail to participate, failure is imminent. This program is being installed for the students' welfare. An intramural program is organized with the belief that it is just as necessary to build up students' muscles and competitive spirit as it is to improve their minds.

We hope that students of RPI will assent to this belief by participating fully in the intramural program.

Pigskin Predictions

VMI over Virginia.....VMI speed and quarterback Dyer win again
VPI over William & Mary....Could be close though
Pitt over West Virginia.....No problem here
Tennessee over Alabama.....Volunteers have tough defense
Citadel over Richmond.....Spiders bench shy
Mississippi over Tulane.....Rebels roll again
Syracuse over Penn State....Syracuse number one team
Ohio State over Purdue.....Ohio State undefeated
Navy over Air Force.....Middies have Joe Bellino
Arkansas over Texas.....Arkansas rebounds from Baylor loss
Baylor over Texas Tech.....Baylor tough team
Washington over UCLA.....Another close one

Lettermen Bourne, Wilkinson Are Back

By Bill Jamerson
Sports Editor

Gene Bourne, Green Devil captain last year, and Ernie Wilkinson are returning lettermen from last year's basketball squad.

Both players have been working out in the gym, preparing for the 1960-61 basketball season.

Bourne, who was voted last year's most valuable player, is a 6 feet 3 inch forward whose favorite shot is the jump. The 23 year old senior Physical Education major is married and has an 18-month-old daughter. He played his high school ball at St. Christopher's here in Richmond and was the captain of the prep team during his senior year. Gene also played two years of baseball in high school.

Monogram Executive

Gene, who was recently elected president of the Monogram Club, says hunting and fishing are his hobbies.

Asked what he thought of the Green Devils' chances for the coming season, he replied, "It's hard to say because practice doesn't start until October 17. However, from what I've seen of the freshmen and transfers, we've got some good prospects."

Star Guard

Ernie Wilkinson, 6 foot 1 guard from Richmond, played three years of varsity basketball at Thomas Dale High School. Ernie, a Business major, is 22. His favorite shot is an over-head jump. His best game last year was against Hampden-Sydney, when he tallied 19 points.

Ernie, who lists girls and sports events as his favorite hobbies,

Radio Program Set

The radio program, College Time, will resume broadcasting in mid-November on station WMBG in Richmond and on stations in Williamsburg, Fredericksburg, and elsewhere. The broadcasts discontinued through the summer months, feature musical and dramatic presentations by students from RPI, the University of Richmond, and other Virginia colleges.

coached the German Club intramural basketball team last year.

He agrees with Bourne that it is hard to tell what kind of a team the Green Devils will be this year, but he expects improvement.



This is the B-52. Advanced as it may be, this airplane has one thing in common with the first war-galleys of ancient Egypt...and with the air and space vehicles of the future. Someone must chart its course. Someone must *navigate* it.

For certain young men this presents a career of real executive opportunity. Here, perhaps *you* will have the chance to master a profession full of meaning, excitement and rewards...as a Navigator in the U. S. Air Force.

To qualify for Navigator training as an Aviation Cadet you must be an American citizen between 19 and 26½—single, healthy and intelligent. A high school diploma is required, but some college is highly desirable. Successful completion of the training program leads to a commission as a Second Lieutenant...and your Navigator wings.

If you think you have what it takes to measure up to the Aviation Cadet Program for Navigator training, see your local Air Force Recruiter. Or clip and mail this coupon.

There's a place for tomorrow's leaders on the Aerospace Team.

U.S. Air Force

MAIL THIS COUPON TODAY
AVIATION CADET INFORMATION
DEPT. SCL010
BOX 7608, WASHINGTON 4, D. C.

I am between 19 and 26½, a citizen of the U. S. and a high school graduate with _____ years of college. Please send me detailed information on the Aviation Cadet program.

NAME _____

STREET _____

CITY _____

COUNTY _____ STATE _____

Student Charge

Accounts Invited

Easy to open—

Convenient to use

Meadow Laundry

410-412 N. Harrison



Hair Cuts
Vacuum Cleaned

We specialize
in FLAT TOPS

HALL'S BARBER SHOP

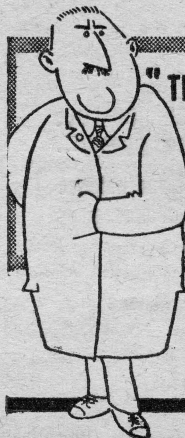
1017 W. Broad St.

WESTHAMPTON THEATRE

5706 GROVE AVENUE — AT 8-9007

★ NOW PLAYING! ★

THE FUNNIEST LABOR-MANAGEMENT SATIRE
EVER SEEN!



"THE BRIGHTEST
COMEDY THIS
YEAR!"
—N. Y. TIMES

Starring
PETER SELLERS · IAN CARMICHAEL
TERRY-THOMAS · A BOULTING BROTHERS PRODUCTION
A COLUMBIA PICTURES RELEASE

'I'M ALL RIGHT JACK

Mock Vote Is Scheduled for Next Week

(Continued from Page 1)

ism department in no way expresses any preference for any candidate or party.

Most reports indicate that, at this time, presidential candidates John F. Kennedy of the Democratic party and Richard M. Nixon of the Republicans are running neck and neck. Both candidates are of approximately the same age and years of political experience. Certain differences in their philosophies and party platforms are apparent, however.

Senator Kennedy is vigorously outspoken in support of federal aid for education and more pay for teachers, medical care for the aged, minimum wage increase, civil rights and a stronger federal role in government, generally.

In an opening campaign speech the Democratic candidate emphasized that with "a healthy rate of growth," the United States can have full employment, "pay for all the defenses this Administration says we can't afford," and have better school facilities with "the best-paid and best-trained teachers."

He believes civil rights to be more of a presidential responsibility than a congressional one. "The next President must exert the great moral and educational force of his office to help bring equal access to public facilities. Kennedy's running mate is Sen. Lyndon Johnson of Texas.

Nixon stated strongly when he accepted the GOP nomination that the military security of the U. S. "must be put before all other considerations."

He, too, believes that the country should have a maximum rate of economic growth but he would encourage it by "increasing the opportunities for private investment."

Medical care for the aged and educational improvements also oc-

cupy a place of importance in the Republican platform. Nixon's running mate is Henry Cabot Lodge, former delegate to the United Nations.

The Conservative Party, sponsored by the Virginia Committee for Constitutional Government, is the third party to be listed on the presidential ballot. The two candidates, C. Benton Coiner and Edward J. Silverman, are stand-in candidates for Sen. Harry F. Byrd

of Virginia for President and Thomas J. Anderson of Tennessee for vice-president.

The conservatives say there is no real opposition party in this election since both the Republican and the Democratic parties stand for international socialism.

They are offering voters a strong program for States' Rights and a return to the principles of what they describe as constitutional government.

Republicans Address Students

Two prominent Republican workers addressed the RPI Young Republicans Club Monday night. Ted R. Mann, chairman of the Third Republican Congressional district, and Mr. J. Calvitt Clarke, head of the Republican Speakers Bureau, outlined the GOP platform to the audience of 26.

Mr. Mann deplored government intervention and defined a Republican as one who "believes in and supports the government within the framework of the Constitution, and believes in government from the bottom up."

He urged his listeners to "vote if you are old enough, and if you are not old enough to vote, you can talk politics and study politics and learn what is going on in the world."

Mr. Clarke, the principal speaker attempted to clarify the overriding issues of the campaign. He said foreign policy was the most

important thing to consider in electing a person to be president.

"The Democrats were in power at the end of World War II in 1945 . . . Bargains made by Roosevelt and Truman lost all of eastern Europe and China behind the Iron Curtain," said Clarke. "But not one square mile of the world's geography has gone behind the Iron Curtain since the Republicans took over the administration."

Mr. Clarke went on to say that Sen. John F. Kennedy's attitude toward the U-2 incident "is the same sort of fuzzy thinking that has permeated Democratic leadership." He cited what he described as the courage exhibited by vice president Nixon during South American rioting, his attendance at cabinet meetings and the diplomatic services that the vice-president has performed. There, he said, are a part of the GOP presidential candidate's good back-

ground for dealing with foreign affairs.

Concerning education, Mr. Clarke said the Republican platform is opposed to government aid to teachers salaries, but favors assistance in construction of buildings in the states.

As an over-all statement of the Republican ticket Mr. Clarke said emphatically that Nixon and vice presidential candidate Lodge "stand for much, much less government interference in every field."

Concert Films

To Be Shown Here

L. Wayne Batty, head of the Music department, has announced that two films taken during Leonard Bernstein's most recent tour of Europe will be shown here October 19 and 26.

Filters for flavor
—finest flavor by far!

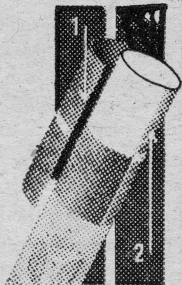
CLASS A CIGARETTES

Tareyton

DUAL FILTER

THE TAREYTON RING MARKS THE REAL THING!

Tareyton has the taste—
Dual Filter
does it!



HERE'S HOW THE DUAL FILTER DOES IT:

1. It combines a unique inner filter of ACTIVATED CHARCOAL . . . definitely proved to make the taste of a cigarette mild and smooth . . .
2. with a pure white outer filter. Together they select and balance the flavor elements in the smoke. Tareyton's flavor-balance gives you the best taste of the best tobaccos.

NEW DUAL FILTER Tareyton

Product of The American Tobacco Company—"Tobacco is our middle name" © A. T. Co.

FOR THE
BEST

1
STOP

LAUNDRY
& CLEANING

SERVICE
DELUXE
SHIRT
FINISHING

WASH, DRY
'N'
FOLD

MEADOW
AUTOMATIC
LAUNDRY

410-412 N. Harrison
between
Grace and Franklin