

Scholarship Goal Set at \$1,700

6-Year Plan Of Building Proposed

Cost Estimated
At \$9,070,995

A six-year program proposed this week by the Colleges of William and Mary includes a nine million dollar appropriation for expansion at Richmond Professional Institute.

The expenditures were proposed last Tuesday to the state Capital Outlay Commission.

The over-all funds asked by the William and Mary system were 52.7 millions, to be spread over the six years. This compares with eight millions granted the colleges from 1952-62.

Under terms of the proposed allocation to the William and Mary system, RPI would get \$9,070,995, to be spread over the six-year period as proposed for the entire amount.

Allocations Sought

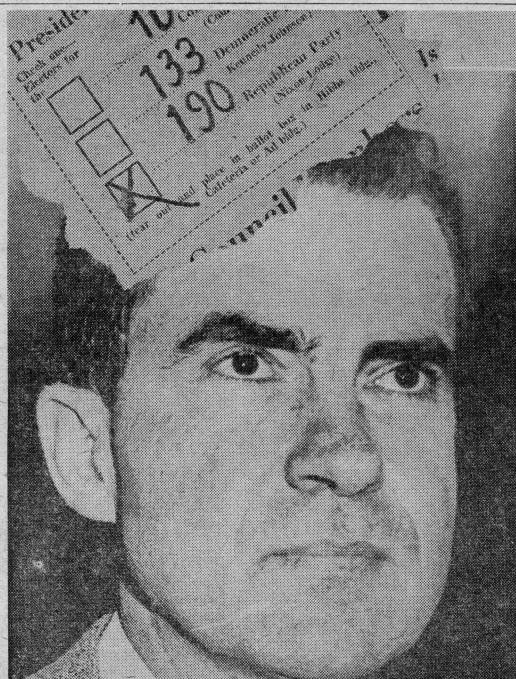
Use of the funds proposed for RPI is as follows:

- (1) Extensive land purchases for building sites.
- (2) A \$112,000 women's dormitory and infirmary.
- (3) An \$800,000 library.
- (4) A \$500,000 men's dormitory at 710 West Franklin st.
- (5) Another \$500,000 women's dormitory at 839 West Grace st.
- (6) A \$500,000 men's dormitory at 801-15 West Grace st.
- (7) A new classroom building at 313-327 North Harrison st.

Officials emphasized that the funds had only been requested and that the commission had not acted. The state commission must study these requests and those of other institutions and, next summer, make its recommendations to the Governor. He, in turn, will make the final budget recommendations to the General Assembly.

The proposed expansion program for units of William and Mary system were approved last Saturday by the Board of Visitors of the colleges.

(Continued on Page 6)



Vice-President Richard M. Nixon
RPI Students Heavily Favored GOP Candidate

Nixon Tops Kennedy In Poll, 190 to 133

RPI students picked Vice President Richard M. Nixon and Henry Cabot Lodge in a mock presidential election last week.

The GOP ticket swamped Democrats John F. Kennedy and Lyndon B. Johnson, 190 to 133.

A surprise in the balloting open to all day school students was the poor showing of the Conservative party, which also was listed on the ballot printed in the PROSCRIPT. Conservative candidates Benton Coiner and Ed Silverman, self-designated stand-ins for Sen. Harry F. Byrd of Virginia and Thomas J. Anderson of Tennessee, ran a weak third. They received 10 votes.

Outcome of the election confirms

what political observers have suspected—that the Democratic ticket of Senators Kennedy and Johnson will have a tough time winning the real vote in Virginia. In supporting Nixon, it also reiterates a verdict of several other Virginia college student polls this month.

On the other hand, the extent of the GOP support—with Nixon-Lodge winning nearly half again as many votes as Kennedy-Johnson—was something of a surprise. Recent analyses on the state political level have had Kennedy gaining strength and running Nixon a close race.

The straw ballot conducted by

(Continued on Page 6)

Drive Gets Under Way On Campus November 7

By Dave Burton

A \$1700 goal has been set for the 1960 Student Government Association Scholarship Drive, which will be held November 7-18.

This is the highest goal ever set for the annual drive. It is a \$200 increase over last year's goal but it is about \$125 less than drive pledges totaled last year.

Student Council Treasurer Dick Whitehead, who will head the drive as chairman of the SGA Finance committee, was confident that the goal would be exceeded. Several new activities are scheduled this year, he noted.

Only 11 of the 27 organizations represented in Student Council had submitted their project plans when the goal was announced Tuesday night. And none of the organizations had submitted their pledges, which must be given to Whitehead today.

All 27 of the organizations have been asked to make pledges to the drive, and all have been asked to increase their pledges over last year.

Several scheduling conflicts, resulting from organizations wanting the same time for their projects, have arisen. These conflicts will cause the deadline for drive activities, originally set for November 12, to be extended to November 18.

Whitehead asked that any inquiries about the drive's schedule be filed with him in the SGA office immediately.

In addition to announcing the goal Tuesday night, Whitehead said he is currently considering several proposals to arouse student interest.

One proposal suggests awarding prizes to the best organized club and to the club contributing the most money to the drive. No action has been taken on the proposal.

Whitehead said signs and charts on campus will inform students how much money has been pledged during the drive.

The scholarship drive project started in 1956 with a modest \$500 goal. It has expanded each year, and it is now one of the SGA's top projects, along with the three dances it sponsors.

When all pledges have been col-

(Continued on Page 6)

SGA Seeks Parking Lot Privilege

Student Council last week unanimously voted to ask the administration to negotiate with Grove Avenue Baptist Church for RPI use of the church parking lot.

At the same time, Council gave the final Student Government Association test to six representatives and alternates; appointed a committee to post a weekly school calendar in the Rotunda; announced that a flag has been placed on the Shafer Court flag pole; and discussed ticket reservations to major drama productions for activities fee subscribers.

The proposal to ask the administration to negotiate with Grove Avenue Baptist Church for student use of the church parking area was submitted to Council by Bill Greenlaw, representative for the Freshman Advisory Board. Jerry Bradshaw, Council president, presented the SGA request this week to Dr. George J. Oliver, President of RPI.

Greenlaw also suggested that church members should be allowed to use the new RPI parking lot on North Harrison st. on Sundays if they would allow RPI students to use their lot on week days. The RPI lot is expected to be completed by Tuesday.

"The church would go along with our request more quickly if we gave them something in return," Greenlaw said.

Greenlaw was appointed by Bradshaw two weeks ago to write a letter to the church's board of deacons requesting permission to use their parking area.

(Continued on Page 6)



Cobblestone Staff Gets Together
Charlie Mills, Shirley Williams (back), Bud Minor and Lee Inman

Williams to Edit 'Cobblestone' This Year

Shirley Voland Williams, a senior Journalism major, is editor of the "Cobblestone" this year, Dean O'Connell announced Monday.

Other staff members are Howard Minor, a junior Accounting major, business manager; Charles Mills, a Commercial Art major, art director; and Lee Inman, subscription manager.

Roy Collins, Edwin Pernell and Jim Davis have also volunteered their services to the "Cobblestone". Dean O'Connell said there is still a need for clerical workers.

A native of Richmond, Shirley graduated from Manchester High School. She was managing editor of the Proscript last year and features editor in her sophomore

year. She is a member of the Day Students League.

Howard Minor of Richmond graduated from Thomas Jefferson High School in 1954. He was in the U. S. Air Force before coming to RPI. He is a member of the Phi Beta Lambda.

Charles Mills, a native of Greensboro, N. C. edited his high school annual, the "Whirligig", and was cartoonist for his high school newspaper. He was president of the Baptist Student Union last year.

Lee Inman of Richmond graduated from Thomas Jefferson High School in 1959. He is a member of the Sports Car Club and his hobby is collecting and listening to phonograph records.

Smith Photo

PROSCRIPT

Represented for National Advertising
by National Advertising Service, Inc.,
420 Madison Ave., New York, New York.
Associated Collegiate Press
Virginia Intercollegiate Press
901 W. Franklin Street, Richmond, Virginia

Susan Smith, Editor
Dave Burton, News Editor
Barbara Corbett, Features Editor
William Jamerson, Sports Editor
Nick Wise, Photo Editor
Jack Csaky, Business Manager

Nonvoters

A local newspaper recently said that America is the only place where a man will go three thousand miles to fight for democracy but will not walk across the street to vote for it. If the mock presidential election held here over the week end is any indication of the future America's interest in exercising this vital privilege of a free society, then the "voice of the people" will never really be heard in this land.

Out of approximately 2,000 full time students, only 333 thought their opinion on who should direct our government important enough that they bother to vote. Although every effort was made to simplify the ballot, still only 15% of the student body of the day school turned out.

How many times have we walked over the campus and heard students say "If I only could vote"? The same students who sit in the Rotunda and complain because the voting age has not been reduced from 21 to 18 are the ones who will not vote when they have a chance.

Is it possible that the blame does not rest entirely upon the student nonvoters?

We have heard comments blaming the Student Government and student clubs sponsoring campus political activities for students' indifference to the nation's future. These people contend, for instance, that not enough was said in advance about the debates on the presidential elections; in other words, they blamed others for their lack of interest and the resultant cancellation of the campus debates.

It is possible that these activities were not properly publicized. The fault may rest with the clubs, the SGA, and the PROSCRIPT; but when, year after year, school spirit and interest decrease to the point where only one-sixth of the day school student body participates in a straw ballot concerning the national election, we must realize that the students themselves—the nonvoters—are to blame.

Quiet, Please!

"The most inexcusable and disgraceful of all noises is the cracking of whips," said Schopenhauer in 1890. Consider now the multitudinous noises of today.

I would, without a moment's hesitation, trade the blare of an auto horn (the most inexcusable and disgraceful of today's noises) for the comparative quiet of a whip snap. Schopenhauer missed the brave new noises of steam drills, factory whistles, and freshmen riding atop mailboxes screaming, "I am the bringer of noise. I will drive every constructive thought from your head."

I suggest that there would be more good work of a creative sort produced in this college if there were opportunity for undisturbed concentration.

Fines should be imposed for the unnecessary blowing of car horns (as is the case on military posts). As for street repairs, they could wait at least until I have had my second cup of coffee in the morning.

Campus Calendar

- Oct. 28—Day Student League dance, Gym, 8:30 to 11:00 p.m.
Accidental Club party, Music Building, 8:00 p.m.
- Oct. 30—Wesley Foundation meeting, Pace Memorial Methodist Church, 5:45 p.m.
Westminster Fellowship meeting, Grace Covenant Presbyterian Church, 6:00 p.m.
Canterbury Club meeting, St. James Episcopal Church, 5:30 p.m.
- Nov. 1—Hillel Foundation meeting, 824 Park Ave., 7:00 p.m.
- Nov. 2—Westminster Seminar meeting, Music Building, 5:00 to 6:00 p.m.



"HEY FRANK, DO WE HAVE ANY WARM BAT'S MILK?"

Legislators, City Council Invited to Homecoming

Members of the Richmond City Council and of the General Assembly have been invited to RPI's 10th homecoming November 5 sponsored by the RPI Alumni Association.

A schedule of planned events follows:

At 8 a.m. there will be a breakfast for alumni of the Business department. Registration for all alumni will follow in the Rotunda of the Hibbs building from 9 to 10 a.m., after which Dr. and Mrs. George J. Oliver will host a "coffee" at 10 a.m.

The business meeting will be held at noon in the Shafer st. Playhouse. From 1 until 2:30 p.m., luncheon will be served in the Shafer Street Court.

A matinee including excerpts from recent major productions and an original one-act play will be presented by the Drama department in the Playhouse at 2:45 p.m. The matinee's mistress of ceremonies will be Marilyn Ende, opening the show with "The Hostess with the Mostest" from "Call Me Madame." Marilyn is a graduate drama student, of RPI.

The cast will present three production numbers from "The Boy-friend," and a scene each from "The Kids," "Twelfth Night" and "Reclining Figure." The one-act play is "Hope," by Frank Fuller, a junior from Henderson, N. C.

The homecoming dance will be held at 9:30 p.m. Saturday evening at the Hotel John Marshall

Roof Garden. Music will be provided by an alumnus of the school, Hunter C. Purdie, and his orchestra.

E. V. Woodall Is New RPI Business Manager

Mr. Ernest V. Woodall took over the duties of business manager at RPI this fall. His office is responsible for maintenance of the school and supervision of school finances.

Mr. Woodall who was born in Richmond and has lived here all his life, succeeded Mr. Robert T. English Jr. Mr. English left here to take a similar position with the College of William and



Bishop Photo
Ernest V. Woodall
Business Manager

Fine Art Senior Gives Solo Exhibit

A senior solo exhibit of the work of Fine Art major Nancy Woltz is now on display in the Franklin Street Gallery of the Gymnasium Building.

Her work will be on exhibit through next Friday.

Nancy is presently practicing teaching at Patrick Henry and Maury Elementary Schools.

She began her college career at Stratford Junior College, and has studied at Hollins College, as well as at RPI. Mrs. Woltz has traveled extensively in Europe, and has exhibited her work in Danville, at Hollins College, the Meadow Laundry, the Valentine Museum, the Virginia Museum, and at the Reynolds Metals Company.

RPI Students Will Attend BSU Convention

Three members of the RPI Baptist Student Union will represent their club at the group's annual state convention at Lynchburg today through Sunday.

They are Jim Cluff, junior Business major; Sally Shearer, senior Occupational Therapy major; and Miss Marie Claypool, student director for BSU clubs in downtown Richmond colleges and advisor to the RPI club.

Sally, who is president of the RPI organization and who was a missionary in Hawaii last summer, will report her missionary activities tomorrow night. Other Baptist student missionaries sponsored by the convention also will speak.

Walter Pendleton, a sophomore Music major and a member of BSU, is a candidate for the state BSU music chairmanship in the election of officers tomorrow. Pendleton is not attending the convention.

Psi Chi Charters Psychology Club

The Psychology Club has been accepted as a chapter of Psi Chi, the national honorary psychology fraternity. The acceptance becomes official next month.

Ray Naar will be installed as the chapter's first president next February. Other officers will be Richard MacDougal, vice president and Barbara Neece, secretary.

Requirements for membership in Psi Chi are a "B" average and six hours in psychology.

Mary at Williamsburg.

Mr. Woodall was educated at Ginter Park school and John Marshall High School, and he received diplomas in banking and accounting and business administration from Virginia Mechanics Institute. He studied advanced accounting at the University of Richmond evening school of business administration and attended coaching classes for the state examination for certified public accountants at both schools.

For years he was a member of the YMCA, where he was chosen to be a senior leader to train the younger men. Mr. Woodall instructed a class of drafted men awaiting army assignment in wireless telegraphy and other signal systems for the school board in co-operation with the federal government. He instructed classes in bookkeeping during the school years of 1927 and 1930 at John Marshall night school.

Mr. Woodall has worked as an accountant and auditor for various establishments in Richmond. He was last associated with Berry-Burk & Co., Inc., retail clothiers and furnisheers where he started as auditor and accountant and was, when he resigned to come to RPI, treasurer and general manager.

Trick or Treat?

A couple of Cornell University students, after watching with some envy the Halloween activities of the neighborhood youngsters, decided to join in the fun.

Arming themselves with suitable containers, they approached a nearby home and rang a bell. When the door opened they announced "Trick or Treat" and held out martini glasses. Their glasses were promptly and properly filled.—(From page 32 of the October 1960, Readers Digest)

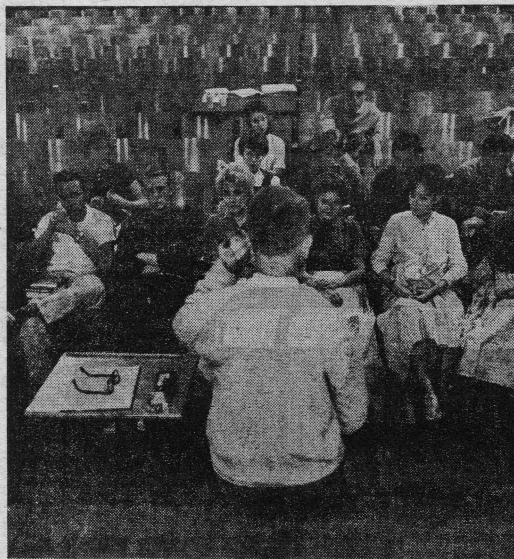
'Murder' in the Making



Wilbur Keys Portrays Thomas a Becket
Rehearsal Was Held in Shafer Playhouse



Thomas a Becket (Wilbur Keys) Lies at the Feet of His Killers
They Are (from left) Jim Davis, Marshall Murdaugh, John Wilson



Director Hodges Analyzes Scene for the Cast
Most Rehearsing Was in Shafer Playhouse

Photographs by
Malcolm Carpenter

Story by Charles Bryant

Murder in the Cathedral is what rehearsals of T. S. Eliot's play, by the same name, seem to be.

Mr. Raymond Hodges, the play's director, and his group of willing workers have been haunting St. Luke's Church for four weeks now with strange Eliot poetry. From 7 to 11, five nights a week, they rehearse and re-rehearse in preparation for opening night.

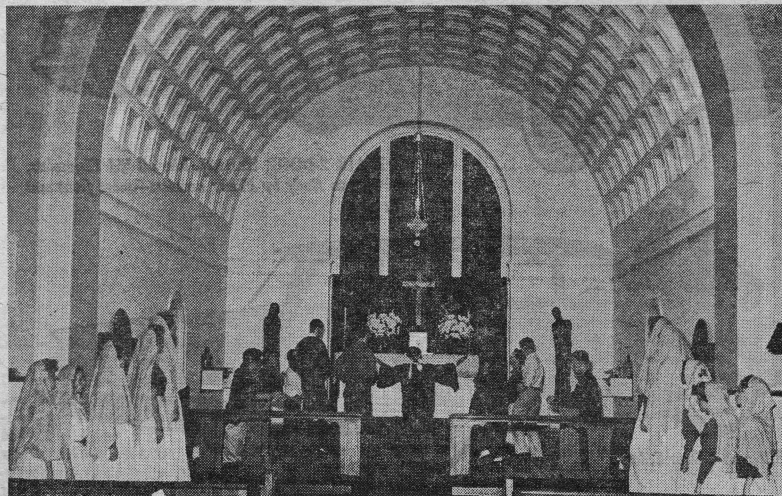
Mr. Hodges sits on the edge of a pew in the back

row of the church and directs the action with the ease and interest of a Bernstein preparing for Carnegie Hall. Sometimes he seems to attempt a verbal, gestural pulling of lines from the chorus, or stops the action to rearrange or advise an erring actor.

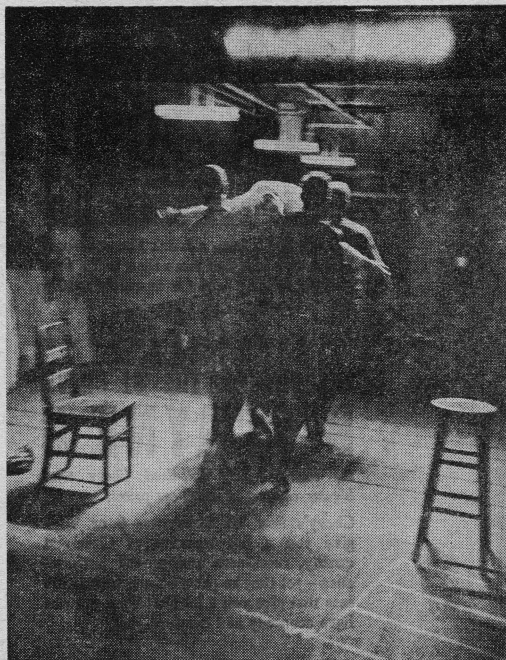
Some of the players forget their lines at first, and the whole thing looks

rough and unconnected. But, finally, it all fits together, and the actors, director, backstage men, set and prop designers, and costume director will present it to a sold-out audience for the first time tonight at 9 o'clock in St. Luke's Church.

Tickets will be on sale to RPI students only on Saturday, November 5.



Finally, After Many Rehearsals, Cast Moved to Local Church
Production Actually Will Be Staged in Sanctuary of St. Luke's



The Martyr Becket Is Borne Off
'Murder in the Cathedral' Ends on This Note

'Retailing Week'

15 Students in Show Window

As part of Careers in Retailing Week, 14 seniors and one graduate student from the Retailing Department spoke in three local stores' display windows this week.

The value of a retailing education was emphasized by Edward Beany, Gerald Bradshaw, Miles King, Margaret Klugman, Sue Lassiter, Sharon Macfarlane, John Martin, Floyd Miles, Lynne Rhudy, Susan Rich, Melvil Sandlin, Jimmy Seacore, William Smith, Judith Teaford, and Mary Turner in the corner windows of Miller and Rhoads, Sears Roebuck & Co. and Thalhimers.

In conjunction with RPI, the Retail Merchant's Association is participating in a national con-

test to inform the public on the value of retailing courses.

Recently Ed Benny, Jim Lester, and Nancy Vanderslice have talked to local civic organizations on their work and educational experience.

Wednesday 10 seniors became executives for a day in leading department stores.

Eight seniors worked in personnel offices. Gay Alford, Donald Harris, Barry Ingram and Mary Mutchler worked at Miller and Rhoads; Cynthia Burkett, Doloras Campbell, Becky Hawkins and Robert Maurer at Thalhimers.

Other activities included Mayor Woodward's ribbon cutting, launching the week; two radio programs, Farn Wilson's Richmond Round

Table and the Dick Gillis Show; playing of taped speeches from store windows; discussion program, "What's My Line," with former RPI Retailing majors as panel members.

To conclude activities, seven Retailing majors who represented RPI will discuss their experience at the November 2 Distributor's Club meeting.

Three panel members have been selected, George Carey, speaking on his experience; Ed Benny, speaking on Civic League speeches; and Jimmy Lester speaking on his recent visit to Roanoke for the World Travel meeting. Kenny Potts will moderate the discussion.



Dodson Photo

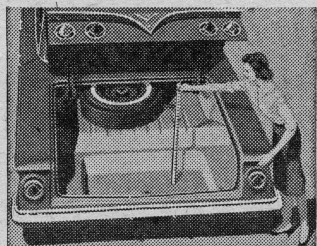
This Display Appeared in Thalhimers' Window This Week. Bob Meier (left), Jim Moskovitz and Jerry Bradshaw View It

HERE! THE GREATEST SIXTY-ONEDERFUL CHEVROLET

Here's the car that reads you loud and clear—the new-size, you-size '61 Chevrolet. We started out by trimming the outside size a bit (to give you extra inches of clearance for parking and maneuvering) but inside we left you a full measure of Chevy comfort. Door openings are as much as 6 inches wider to give feet, knees, and elbows the undisputed right of way. And the new easy-chair seats are as much as 14% higher—just right for seeing, just right for sitting.

Once you've settled inside you'll have high and wide praises for Chevrolet's spacious new dimensions (in the Sport Coupes, for example, head room has been upped as much as 2 inches, and there's more leg room, too—front and rear). Chevy's new trunk is something else that will please you hugely—what with its deep-well shape and bumper-level loading it holds things you've never been able to get in a trunk before.

Yet, generously endowed as this car is with spaciousness and clean-etched elegance, it holds steadfastly to all the thrifty, dependable virtues Chevrolet buyers have come to take for granted. Your dealer's the man to see for all the details.



There's never been a trunk like it before! The floor's recessed more than half a foot and the loading height is as much as 10½ inches lower.

★★★★★★★★★★★★

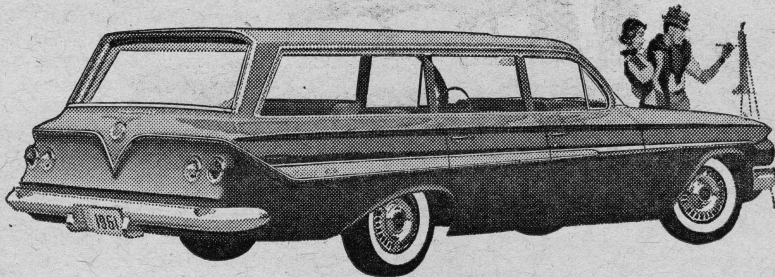
INTRODUCING THE '61 CHEVY BISCAYNE 6

the lowest priced full-sized Chevy with big-car comfort at small-car prices!

Chevy's new '61 Biscaynes—6 or V8—give you a full measure of Chevrolet quality, roominess and proved performance—yet they're priced down with many cars that give you a lot less! Now you can have economy and comfort, too!



IMPALA 4-DOOR SPORT SEDAN—one of five Impalas that bring you a new measure of elegance from the most elegant Chevrolets of all.



NOMAD 9-PASSENGER STATION WAGON. You have a choice of six Chevrolet wagons, each with a cave-sized cargo opening nearly 5 feet across.



BEL AIR 2-DOOR SEDAN, like all '61 Chevrolets; brings you Body by Fisher newness—more front seat leg room.



Biscayne 4-Door Sedan

See the new Chevrolet cars, Chevy Corvairs and the new Corvette at your local authorized Chevrolet dealer's

'Roaring Twenties' Theme for Dance November 12

The Roaring Twenties will be revived when the men's dormitories do their part for the Scholarship Drive next week.

A Costume dance will be held in the 712 West Franklin st. Dormitory November 12, from 8 to 11:30 p.m. and a prize will be given for the best costume.

Profits from the admission charge will go to the Scholarship Drive.

The dormitory will be decorated in the style of the twenties.

A band composed of musicians from the dormitories will play for the dance. Members of the band include Ed Divers, guitar; Jeff Harkey, piano or guitar; Tony Redman, guitar; Charles Arnold, drums; Tommy Fudala, accordion, and Arthur Shipp, accordion and guitar.

Ceramics Displayed At Museum

Three ceramic pieces by assistant professor of Arts and Crafts Allen Eastman are presently on exhibition at the Virginia Museum of Fine Arts in conjunction with the Virginia Art Education Convention which will meet in Richmond next Friday.

The state-wide showing will continue through November 14.

Proverbs for Fall

Just about the time I thought I had my budget balanced, I had to buy books.

Life is just one long process of getting tired.

Keeping late hours at night doesn't bother the average college student in the least, until it is time to get up in the morning.

(The Bulletin, Kansas State Teachers College, Emporia, Kan.)

IF YOU WANT A BOOK—ANY BOOK

RICHMOND BOOK SHOP

119 E. MAIN ST.

WE BUY, SELL AND EXCHANGE

Dover

Barnes & Noble

Evergreen

HOURS 9-5:30

Reference

Back Number Magazines

Pocket Novels

PHONE MI 4-9970

PROSCRIPT—Friday, October 28, 1960

5

Interested In Paperbacks?

We have the largest selection of quality paperbacks in the South. 4,000 titles in philosophy, literature, psychology, social sciences, religion, etc., to choose from. Orders taken for any title not in stock.

Grace Card Shoppe

509 E. Grace St.

Milton 8-2931

WE ALSO CARRY

Richmond's LARGEST selection of greeting cards and Barton's Chocolates exclusively.

SHOW ON WORTH!

NEW '61 CHEVY CORVAIR

More space . . .
more spunk
and wagons, too!



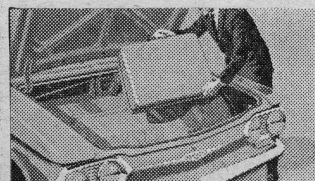
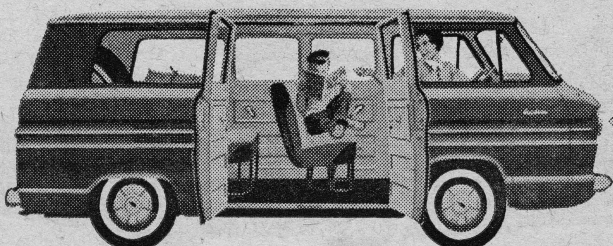
The newest car in America: the CORVAIR 700 LAKE-WOOD 4-DOOR STATION WAGON.



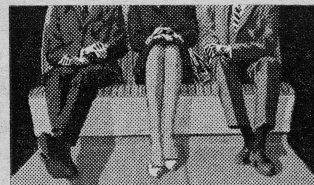
CORVAIR 700 CLUB COUPE. Like all coupes and sedans, it has a longer range fuel tank.



CORVAIR 700 4-DOOR SEDAN. Provisions for heating ducts are built right into its Body by Fisher.



Spare tire is in the rear in coupes and sedans—leaving more luggage space up front.



Even middle-seat passengers sit pretty, thanks to Corvair's practically flat floor.

Now in production—the GREENBRIER SPORTS WAGON with up to twice as much room as ordinary wagons (third seat optional at extra cost).

See the new Chevrolet cars, Chevy Corvairs and the new Corvette at your local authorized Chevrolet dealer's

Alumnus Returns

Whitehead Joins Faculty

By Malcolm Carpenter

Mr. Timothy Whitehead, a new member of the art department faculty, has returned to RPI after 12 years absence. He was graduated from RPI in 1949 with an M.A. in sculpture. Now he is an assistant professor of commercial art.

Since his graduation he has been teaching art in grades from one through the senior college level. He has exhibited his work in 16 states and Canada. Last year he had an exhibit here in the Franklin Street Gallery.

Whitehead works with construction of found natural objects such as driftwood and stones. He tends to reject conventional media because he says they over determine the result.

Although he works with the media of oil and drawing he feels that oil painting is a field in which

one is much burdened by memory of what has been done.

When he began working in construction of natural objects five years ago, he found his audience severely reduced—and it remains so today.

Two years before returning to RPI, Mr. Whitehead was a case worker for the Social Service in Richmond.

A student of Zen Buddhism for 10



Carpenter Photo

Timothy Whitehead
Paints Zen Symbol

years, he feels that it is a strong culture force in the United States, though its main areas of strength lie in New York and the West Coast.

"Zen," he said, "attempts to achieve a clear mind, and this carries over a simplicity to one's work."

"When we have the knowledge

that there is no separate ego," declared Whitehead, "we are able to identify with found natural objects, such as stones."

He paused for a moment to reflect on what he had said. He raised his head and with regret said, "Since Zen is essentially a practice to rid the mind of conceptualization, an attempt at definition is a contradiction of intentions. Each person must find out for himself."

Zen is for persons who have assimilated the ordinary rules of correct behavior. One cannot transcend a culture without first having adjusted to it. "Beat" subculture is mere middle class mendacity in reverse, he says.

For this reason Mr. Whitehead does not wish to be associated with the beats, for he says they use Zen as justification of rebellion against culture.

Busy Music Major Plan Organ Recital

Sally Shealy, a Music Education major from Alexandria, will present her senior organ recital November 13. The 21-year-old concert enthusiast will perform in St. Stephen's Episcopal Church.

Although she practices four hours a day, she still finds time for dancing, teaching kindergarten, and going to concerts. Sally leads an active life as a member of the Madrigalists, organist at Memorial Methodist Church, and official accompanist for the RPI Choral Group.

As preparation for her recital, Sally lists two main hurdles: learning to know the organ which she will use, and interpreting the composers. She explained, "Getting accustomed to the organ you will use is a challenge, for each organ is like meeting a new person. It's important, too, to get a good background in interpreting each composer, to play the music as

they would want it to be played."

She is studying to be a church minister of music, and to teach music in elementary schools. "My greatest desire," she added, "is to go to Europe and play on some of the great organs. I'd love to see Westminster Abbey."

Her opening piece will include a Buxtehude composition and two by Bach. The second portion of the program will give major emphasis to Haydn. Sally has chosen the six movements of his "The Musical Clocks." This will be followed by Mozart's "Fantasy in F Minor." The last group includes chorale preludes by Brahms and a closing number by Gigout.

Art Projects Exhibited

Thesis projects from the Commercial Art classes of Leon Bellin are on exhibit on the second floor of the commercial art building through next Friday.

Building Plan Is Proposed For Campus

(Continued from Page 1)

Besides the nine million dollars suggested for RPI, William and Mary at Williamsburg would get about 27.5 millions. The balance of the 52.7 million dollars sought for the entire system would be divided among Southside Junior College at Petersburg, the new junior college at Newport News and Norfolk William and Mary.

Tax commissioner C. H. Morrisett, chairman of the study group, said of the W&M request: "This program is going to require careful study. We shall see what we shall have to see."

"But it is pretty obvious," he continued, "that the emphasis on capital outlays in the next six-year program is going to be on higher education, just as the old program emphasized mental hospital needs."

Alvin Duke Chandler, chancellor of the Colleges of William and Mary in Virginia, warned the commission that "the gap between what we can do and what we need to do is growing wider each year."

"We can permit this condition to continue only at our peril," he said.

Nixon-Kennedy

(Continued from Page 1)

the Journalism department in the PROSCRIPT drew only about 15 per cent of the students' votes, however. Day school full-time enrollment totals about 2,000 and the total number of ballots cast was 333, or about 15 per cent.

Concert Band Presents Program

The RPI Concert Band had a crisp clear day Tuesday for its performance in Shafer Street Court. The audience of approximately 150 clustered in windows overlooking the court and lined the sidewalk. A few even sat in the chairs provided for them.

The band offered the "Folk Song Suite," Act IV of the Symphony from "The Fairy Queen," "Belle of the Ball, Waltz," Wagner's "Elsa's Procession to the Cathedral from 'Lohengrin,'" Frederick Lowe's "My Fair Lady," and the "National Emblem March" by E. E. Bagley.

SNEA Meeting

The meeting of the SNEA is next Tuesday, November 8. Meetings will be held on the second Tuesday of each month instead of the first as published in last week's Proscript.

Scholarship Drive Plan Announced

(Continued from Page 1)

lected, they will be deposited in the SGA Scholarship fund, which is used for student loan scholarships. Scholarships of \$100 or less are awarded to students who qualify after careful screening by the Executive Council. The scholarships are awarded on a basis of need, and winners must have a "C" average.

Whitehead said that if the goal is reached more than \$2,250 will be in the fund. This would make it possible for more student than ever to receive the scholarships. Only two students now enrolled are

receiving the scholarships.

Plans for several new projects have been submitted to Whitehead. Two of these are Men's Dormitory Association's "Roaring Twenties" party and the Cotillion Club's Hawaiian dance. No date has been set for the dance.

Several projects which were successful last year have been rescheduled. Three of these are the Phi eta Lambda slave sale, the Fine Art club auction and the Senior class variety show.

Slave Sale Repeats

The slave sale, which last year netted over \$150, will again be held in the Shafer St. Playhouse. However, no time has been announced for the sale. Coeds are auctioned to the highest bidding males at the sale.

Some of the organizations have set up week-long activities to raise funds for the drive. Primarily the religious clubs have used this method.

The Junior class is planning to hold a dance in the gym as its

part in the drive. Bob Nitchie, class president, is negotiating with several combos to provide music for the dance.

Here is the schedule of definite dates for the drive as released by Whitehead Tuesday.

November 7-9 — Canterbury club candy sale in the women's dormitories.

November 7-12 — Unitarian sketch booth in the Rotunda.

November 7-12 — Occupational Therapy club sandwich sales in the women's dormitories.

November 7-12 — Hillel Foundation doughnut sale in the women's dormitories.

November 11 (Friday) — Freshman class record hop in the gym.

November 12 (Saturday) — Roaring Twenties party at the 712 West Franklin st. Dormitory, sponsored by the Men's Dormitory Association.

November 18 (Saturday) — Monogram basketball game. Monogram club vs. alumni in gym.

SGA Seeks Permission To Use Parking Lot

(Continued from Page 1)

However, "after talking to Dean O'Connell and several teachers," Greenlaw said, "we decided not to send the letter."

If the administration handles negotiations for the parking lot, the proposal will have to be approved by Dean O'Connell, Dr. Oliver, and Mr. Ernest V. Woodall, business manager. One of these would then approach the church.

Six SGA representatives and al-

ternates took the final test on rules in the student handbook and on Council's constitution, by-laws and regulations. Result of this test are not yet available.

Larry Prentice, Day Students League representative, was appointed by Bradshaw as chairman of a bulletin board committee responsible for issuing a weekly school calendar. Beginning today the calendar of all school functions will be posted in the Hibbs building across from the book store.

A flag was placed on the Shafer Court flag pole last Thursday. It will be raised daily at 8:30 a.m. and lowered at 4 p.m. The proposal for a flag was made three weeks ago by Margaret "Dee Dee" Bishop, sophomore class representative.

Students holding activities fee cards should reserve tickets to major drama productions, present their activities fee cards at the box office, and get tickets in return, Bradshaw said.

The activities fee guarantee of four major productions does not include "Murder in the Cathedral."

Dr. Riese to Lecture In Psychology Dept.

Dr. Walther Riese, a retired faculty member of the Medical College of Virginia (MCV) has been appointed as a visiting professor for the Psychology department.

Dr. Riese is now teaching physiological psychology. He will begin teaching a class in aphasia next February.

Dr. Riese has worked under the Rockefeller grant for research in comparative brain anatomy and also has been chairman of the department of the history of medicine at MCV.

Sales Drive Is Launched

Lee Inman, subscription manager for the "Cobblestone," has been directing an active campaign this week. Inman has been selling annuals from a table in the lobby of Hibbs Building. He has spoken at several club meetings, and made numerous individual contacts.

Inman is enthusiastic and ambitious for the "Cobblestone" this year. "If we can sell 1,000 yearbooks, we can put everyone's picture in the annual," he said. "It would then be a school annual and not just a 'dorm student's annual.'"

The "Cobblestone" will be sold in Hibbs Building until next Friday. The price of the yearbook is eight dollars.

People who have paid for the "Cobblestone" through the activities fee should contact Inman to arrange appointments to have their portraits made. Inman will make appointments daily from 9 a.m. to 5 p.m. until November 11.

Colonial Studios will make the portraits in room 2 of the Administration Building.

Council May Admit Second New Group

A new campus organization has recently been admitted to Student Council, and a second group is expected to be admitted next Wednesday.

The organizations are a Unitarian Student Group, which was admitted to Council two weeks ago, and the Men's Dormitory Association, which is expected to be admitted next week after club members ratify the association's constitution.

The Unitarian group, a religious club, has not yet decided upon a formal name. President of the club is Tommy Hudgins, a senior advertising major from Richmond, and its Student Council representative is Lynne Leizure, a sophomore Interior Design Major.

A social club in the planning stages since last spring, the Dormitory Association will be composed of members of RPI's two dormitories for men. The dormitories are located at 312 North Shafer st. and at 712 West Franklin st.

Under its constitution, the association has set up an eight-member administrative committee which will plan social functions for the organization. The committee is made up of the members of the two dormitories

house councils, which are composed of the officers of each dormitory.

Chairman of the administrative committee is Bill Buskell, a freshman Commercial Art major from Bristol, Tennessee, and president of the Shafer st. Dormitory. Vice chairman is Donald Ashburn, a junior Business major from Weems and president of the Franklin st. Dormitory. Representing the organization in Council will be Don Blankenship, a sophomore Fashion Illustration major from Newport News.

The dormitories first sought representation to Council last spring when they held organizational meetings. This fall, the dormitories vigorously renewed their efforts for representation.

To gain representation, an organization must submit its constitutions and their slate of officers to Council. After the constitutions are submitted, they are read by Billy Ayers, Council parliamentarian, to see that they in no way conflict with Council's constitution.

Ayers approves the constitutions if they do not conflict and refers them to Executive Council, whose approval officially admits the organization to Council.

Basketball Team Sets 21-Game Schedule

RPI's basketball team is now hard at work in preparation for the coming basketball season. Coach J. S. Timberlake, who is in charge of the team's conditioning program, is currently having the players doing push-ups, sit-ups, wind sprints and various other calisthenics. The Green Devils may lose some games this year, but these won't be because of lack of conditioning.

Coach Ed Allen made the first cut of the squad last Friday. He now has a working squad of 16 candidates, vying for the 12 available positions.

Pigskin Predictions

Last week the Proscript got six correct predictions out of eight games, bringing the season's picks to 28 right and eight wrong.

Air Force over George Washington.

Georgia Tech over Duke.
Iowa over Kansas.
Maryland over South Carolina.
VMI over Memphis State.
Ohio State over Michigan State.
Mississippi over LSU.
Navy over Notre Dame.
Missouri over Nebraska.
Illinois over Purdue.
VPI over Richmond.
Syracuse over Pitt.
Tennessee over North Carolina.
Tulane over William & Mary.
Clemson over Vanderbilt.
Virginia over Wake Forest.
Michigan over Wisconsin.
Yale over Dartmouth.
Washington & Lee over Hampden-Sydney.

John Hopkins over Randolph-Macon.

Sidewalk Art Sale Set For Sunday

Sculpture, drawings, prints, paintings, ceramics and jewelry will fill the Shafer Street Court when the Fine Art Club holds its annual sale Sunday November 6 from noon to 5 p.m.

The majority of the art work will come from members of the Fine Art Club but anyone else may exhibit by paying an entrance fee of \$1.00.

The Club will also hold an auction during the Scholarship drive next week. In the past the auctions have netted \$600 to \$800 for the drive. The Fine Art Club was the first on campus to give a scholarship.

Planned for this spring is an awards day which will give students a chance to compete for recognition for outstanding work over the past nine months.

One of the first projects for the club was the painting of the Meadow Gallery on Harrison st. The Gallery which is in the Meadow Laundry has been the exhibition place for RPI students for over five years.

Cheerleading Practice

Cheerleading practice will be held from 4:30 to 5:30 p.m. Monday through Friday in the gymnasium for day and dorm girls who wish to audition for the cheerleading squad. Cheerleading tryouts will be held in the gymnasium on the following Monday.

Lose yourself
in a MAZE of
top products

**WAYS 5&10
STORES**

927 W. Grace

Alumni	Home	November 19
MCV	Home	November 29
Roanoke	Home	December 3
Newport News	Away	December 7
Bridgewater	Home	December 13
Bridgewater Christmas Invitational Tourney		Dec. 19, 20, 21
Randolph-Macon	Home	January 5
Bridgewater	Away	January 7
Hampden-Sydney	Away	January 11
Roanoke	Away	January 12
Newport News	Home	January 16
Lynchburg	Away	January 18
Norfolk, William & Mary	Home	February 4
Southeastern	Away	February 8
MCV	Away	February 10
Randolph-Macon	Home	February 14
Southeastern	Away	February 16
Hampden-Sydney	Home	February 17
Pembroke	Home	February 21
Pembroke	Away	February 24
Pembroke	Away	February 25

R.P.I. Students

Search no more for quality school supplies, cards or books; SanDor's can fulfill your needs. An array of new and outstanding art supplies just arrived, including brushes, poster paints and sketch pads.

SHOP

SanDor's Book Store

937 W. Grace

OPEN EVERY DAY—'TIL 9 P.M.

Volleyball Tournament

Intramural director, J. S. Timberlake announced today that intramural volleyball will start immediately after the completion of the intramural badminton tournament.

The badminton tourney, which started last Monday, is expected to last three weeks. Coach Timberlake said that anyone who wants to sign up for the volleyball program should contact him immediately. The competition will be open to all students and faculty members.

**Student Charge
Accounts Invited
Easy to open—
Convenient to use
Have bills sent home**

**Meadow Laundry
410-412 N. Harrison**

Lose the Washpot Blues

Save Time
and
Money

FLY
to
the



Coin Operated

LAUNDERAMA

935 W. Grace St.

Filters for flavor

—finest flavor by far!



THE TAREYTON RING MARKS THE REAL THING!

Tareyton has the *taste*—

**Dual Filter
does it!**



HERE'S HOW THE DUAL FILTER DOES IT:

1. It combines a unique inner filter of ACTIVATED CHARCOAL... definitely proved to make the taste of a cigarette mild and smooth...
2. with a pure white outer filter. Together they select and balance the flavor elements in the smoke. Tareyton's flavor-balance gives you the best taste of the best tobaccos.

NEW DUAL FILTER

Tareyton

Product of The American Tobacco Company—"Tobacco is our middle name" © A. T. Co.

E.A. Mirr Is Director Of Band

By Sandra Turner

Mr. Edward A. Mirr began his duties as band director at RPI this fall. He also teaches music appreciation, sight singing, ear training and orchestration.

Mr. Mirr has studied music for 22 years and has played professionally for 17 of them.

"When I was a junior in high school I was studying with a trumpeter in the New York Philharmonic Orchestra," said the new director. "He told me of an opening with the Indianapolis Symphony Orchestra. I tried out for the job and was accepted. The question arose as to whether I should quit school or not, but I decided to take the job and finish the school year at the end of the playing season.

As a professional musician, Mr. Mirr has played with the Indianapolis Symphony Orchestra, the Baltimore Symphony Orchestra and the Louisville Philharmonic Symphony Orchestra. He played in the Broadway show "Lute Song," with Mary Martin and Yul Brynner, and with the Metropolitan Opera Company. He toured the country with the Ballet Russe de Monte Carlo, and at present, is playing with the Richmond Symphony Orchestra.

Mr. Mirr plays all brass instruments and has a working knowledge of woodwinds and strings. His specialty is the trumpet.

Mr. Mirr has tentative plans for a band concert the third week in October.

"I am interested in making the band good, doubling the enrollment and getting a good concert schedule," he said.

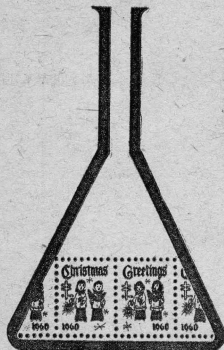
Variety Show Auditions To Begin Monday

Auditions for the Senior class variety show, Flagwaving Frolics, will be held Monday, from 4:00 to 6:00 p.m., at the Shafer Street Playhouse.

Students who sing, dance, or present skits may attend.

HELP SCIENCE FIGHT TB

ANSWER YOUR CHRISTMAS
SEAL LETTER TODAY



Edward A. Mirr, Band Director
He conducts a recent rehearsal.

Wise Photo

Teachers' Exams To Be Given

The National Teacher Examinations, which demonstrate the students' mastery of the subject matter to be taught, will be given at RPI, Saturday, February 11.

Information about registration procedures and applications may be obtained from Dr. Kenneth

Zimmer, director of the School of Business.

Notice

Monthly Certification of Training, Form VB 7-6553, are available in the Veterans Administration office now through October 31.

HAIRCUTS FOR BOTH HIM and HER

at

HALL'S BARBER SHOP

1017 W. Broad St.

We Specialize
in FLAT TOPS

All Haircuts
Vacuum Cleaned

F. B. HALL—Owner



It's what's up front that counts

Up front is **FILTER-BLEND** and only Winston has it! Rich, golden tobaccos specially selected and specially processed for full flavor in filter smoking.

R. J. Reynolds Tobacco Company, Winston-Salem, N.C.

WINSTON TASTES GOOD like a cigarette should!



**MEADOW LAUNDRY
AND DRY CLEANERS**
"ONE DAY SERVICE"

412 N. HARRISON
BETWEEN GRACE AND FRANKLIN