

sale, which was also held in Shafer Court, and the Cotilclub's Luau dance, which  
(Continued on Page 4)

of complexities, beauty and sadness. He possesses a gamut of personalities, and a startling insight into life as it is, or as it appears to him. Eugene is in essence, Thomas Wolfe, famous novelist.

Jim Davis will have the role of W. O. Gant, father and hopeless alcoholic, crushed beneath the domineering boot of his wife, Eliza, played by Maryln Ende. Eliza is a tight-fisted, pathetic

(Continued on Page 4)



## PROSCRIPT

Represented for National Advertising  
by National Advertising Service, Inc.,  
420 Madison Ave., New York, New York.  
Member:  
Associated Collegiate Press  
Virginia-Intercollegiate Press  
901 W. Franklin Street, Richmond, Virginia

Susan Smith, Editor  
Dave Burton, News Editor  
Barbara Corbett, Features Editor  
William Jamerson, Sports Editor  
Nick Wise, Photo Editor  
Jack Csaky, Business Manager

### An Admonition

The announcement last week that the editor of the Richmond News Leader will appear on a nationally televised debate November 26 with a Southern Negro leader should interest Virginians.

The editor, Mr. James J. Kilpatrick, will debate the "sit-in strike issue" with Dr. Martin Luther King Jr. Although he usually sides with the South in his editorials concerning integration, Mr. Kilpatrick could hardly be branded the typical conservative Southern editor. He is sometimes radical.

Since he succeeded the late Douglas Southall Freeman as editor several years ago, Mr. Kilpatrick has taken some controversial stands. For instance, he recently advocated reduction of the drinking age in the state from 21 to 18.

He says what he thinks, a trait which has won—and lost—many friends for him.

Because this sometimes makes him appear too aggressive we respectfully offer this bit of advice.

We hope Mr. Kilpatrick will recall the two presidential nominating conventions last summer and the poor impression the "rebel-rousing" Southern delegates made on the rest of the country. Although these delegates thought they were helping the South's reputation with their fiery speeches, they did just the opposite.

Similarly, aggressive tactics in a televised debate with the clever Dr. King—a man who has seized every opportunity to exaggerate the Negro's role of the underdog—can not fail to do the Southern cause further harm.

### 'Rotunda' or 'Slop Shop'

What ever happened to the clean up campaign? It would seem, from the appearance of the Rotunda, that it has faded into the far distance of Student Government's business.

Last year's Council considered it a matter of utmost importance. Councilmen informed the student body that if something were not done about the "Slops in the Shop" the Administration would be asked to close the Rotunda.

Well, Council, nothing has been done about the Slops, and nothing has been said about the appearance of the Rotunda. Is this satisfactory? We don't think so.

This is not the fault of the maids. Anyone with eyes can see they spend all of their time shoveling trash into the cans. They cannot possibly keep up with the litter.

So what about it Council, are we going to hear anything about this matter from you this year? Or shall we take the Rotunda plaque down and again hang up the old name, Slop Shop.

### Good Neighbors

A major problem of today's city is the depreciating residential fringe around its business center. As the downtown business area seeks room to expand, established residents vacate homes to avoid the commercialism such expansion brings.

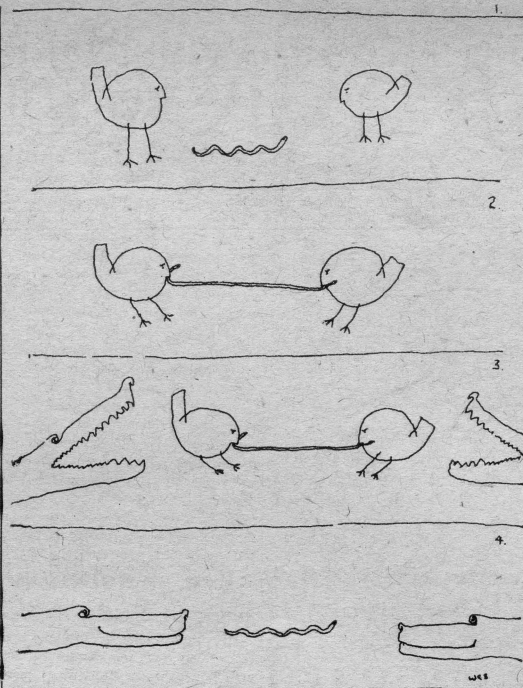
In Richmond's Fan District opening out from Monroe Park at Main st. and extending to Franklin st., such decadence seemed too far advanced to warrant resistance.

But RPI, along with members of the Fan District Association, disagreed.

The association, some 300 householders strong, has undertaken an extensive program of renovation and local improvement.

And RPI deserves acclamation, also. Its initial purchase of older homes for conversion to classrooms and dormitories in the Park ave. and Franklin st. areas has spared these buildings from becoming sub-standard dwellings.

These moves, plus recent purchases and demolition for parking space and future construction, are making way for a Fan District comeback.



### Actor Leaves

## Schreibfeder Tours With Barter Group

By Virginia Gibson

Judd Schreibfeder, a junior Drama major, left RPI Sunday to join Barter Theater's touring company.

The 20-year-old native of Martinsville will play Pete, a gangster, in "The Golden Fleecing" and a page in "Rumplestiltskin." The tour, which lasts until the end of December, is to cover Virginia, West Virginia and North Carolina.

Schreibfeder is best remembered at RPI for his roles last year as the ludicrous and delightful Sir Toby Belch in "Twelfth Night" and as Denesca, the crooked art dealer, in "The Reclining Figure." He also played the fourth tempter in this season's first major production, "Murder in the Cathedral."

When Schreibfeder met the Barter company several weeks ago, he remarked, "I would join you right now if I could."

A telephone call last Monday from Walta Chandler, a former RPI Drama major now with Barter, brought him an offer from the theater business manager to join the tour as soon as possible.

"I've never been so excited as when I got that phone call," he said. "I was flying so high in the sky that I was floating."

After talking to his parents, Dean O'Connell and Mr. Raymond Hodges, head of the Drama department, Schreibfeder accepted.

### Seminar Accepting Study Applications

The Scandinavian Seminar is accepting applications for the 1961-62 nine-month study program in either Denmark, Finland, Norway or Sweden.

Persons eligible include preachers, college graduates and college undergraduates interested in a junior-year-abroad program.

Cost for tuition, room and board, language material and transportation from New York to Copenhagen is \$1,480. A limited number of scholarships and loans is awarded each year to qualified applicants.

Applications can be sent to the Scandinavian Seminar Headquarters, 127B East 73 st., New York 21, N. Y.

This will not be Schreibfeder's first attempt at acting outside the RPI department. He worked the summer of 1959 in "Unto These Hills," an outdoor drama at Cherokee, N.C. He played a prospector—"a loud boisterous part that I had a lot of fun with"—a square dance caller and two soldiers.

For the persons who ask what he will do when the tour ends, Schreibfeder replies, "What am I going to do when I graduate? New York department stores are full of actors with degrees. Every actor should do stock and tour. Although I'm going to miss everyone around school, this opportunity was too great to turn down."

### Library Has Unique Start, Was Former Carriage House

RPI's library, serving over 4,000 students enrolled in fourteen professional schools, arose from a unique beginning.

The building, one-story originally, served as a carriage house and servants quarters for the Ginter Mansion (Now the Administration Building).

Colonel A. A. Anderson, artist, philanthropist and apron of the Richmond School of Art, donated money needed to convert it into a

## Letter to the Editor

To: Proscript Editor

Subject: Past Mock Elections

There has been much said recently about the failure of students in this and other colleges throughout the nation to express their feelings in this coming presidential election through their mock elections.

I sincerely question the belief that the students who did not participate in the mock elections are not interested in the future leader of the United States.

I do question, however, the methods of executing these elections. Here at RPI the only notice I received about our own mock election was in the Proscript which I found floating around the school on the Wednesday after the election was held.

If there was any publicity concerning the election, I did not hear or see it.

Before everyone blames the students for lack of interest, let's look behind the facts and find the reason for our low voting rate. I do not know, but I would like to see the facts presented in the Proscript.

Very truly yours  
John A. Martin/signed

Editor's Note: A story announcing the mock vote was carried on page 1 the week preceding the poll. Both the ballot and another story concerning it were printed on page 1 the week end of the poll. The papers were distributed early Friday.

### Religious Clubs Announce Meetings

This Sunday at 5:45 p.m. Canterbury Club will have a follow-up discussion of the elections and how the results of it were connected with the talk of Mr. Eddie Peeples, a RPI graduate, who spoke last week on "Religion and Political Revolution."

The Wesley Foundation at 5:45 p.m. this Sunday will meet at Pace Memorial Church and continue its series on marriage, with Mrs. Donald Stanton, wife to the Methodist's group advisor, who will speak on the topic "A Wife Looks at Marriage".



WHICH ONE WILL I BUY?—At the Fine Art Sale Sunday, these people could purchase works of fellow students. The \$850 in proceeds went to the exhibitors who plan another sale in the spring.

Carpenter Photo





**CHEERLEADERS**—This year's cheerleader's squad is composed of (back row, left to right) returnees Jane Waddell, Beetle Baily, and Marie Gable, and Carol Heyler (left, middle row), Helen Mitchen (right, middle row), Susan Woolf (left front row), and Jean Caseino (right, front row), all newcomers.

Carpenter Photo

## PROSCRIPT SPORTS

By Bill Jamerson

Coach J. S. Timberlake announced today that the varsity golf team would begin practice after the first semester. Coach Timberlake, who is a fine golfer, urged students who wish to try out for the team to sign up as soon as possible. Since this is the first time RPI has attempted to field a varsity golf team, prospects for a winning team are not great.

### Basketball Bounces

RPI's basketball squad seems to improve with each practice session. The team members are finally beginning to work as a team. The Green Devils, blessed with good ball handlers and great speed, will concentrate on a fast-breaking style of offense. Lacking height, the Devils will have to make the most of their shots to defeat their taller opponents.

The team has the strongest bench of any Green Devil team in recent years. The 12 players are of almost equal ability. No one is really sure of the current starting five, but as of the moment, the first team appears to be made up of Billy Woodson, and George Shaheen, forwards; Jimmy Jones and Doug Loughridge, guards, and Marshall Vaughan in the pivot position. Bobby Muse, Mike Price, Gene Bourne, Steve Peeples, George Stone, Vince Mazza and Mike McDounough have all been playing well enough to come off the bench without slowing the team.

### Intramurals

Basketball intramurals will start on Monday, December 5. Teams will be able to practice starting this Monday from 4 to 6 p.m. The men will practice on Mondays and Wednesdays, and women may practice on Tuesdays and Thursdays.

Due to popular demand, the basketball program will be held before the volleyball program.

### Pigskin Predictions

The Proscript had another bad week in football prognosticating, as we scored only five out of nine correct predictions. This brings the season's record to 44 right and 21 wrong.

VMI over Citadel.....Keydet speed wins again  
Furman over Richmond.....Spider bench weak  
VPI over George Washington.....Gobblers rebound from Davidson game  
Iowa over Ohio State.....Iowa speed decisive  
Colorado over Kansas.....Thin vote for Colorado defense  
Navy over Virginia.....Navy mad after Duke game  
Minnesota over Purdue.....Gophers powerhouse  
Pittsburgh over Army.....Could go either way  
Duke over Wake Forest.....Duke nationally ranked  
Yale over Princeton.....Eli undefeated  
Clemson over South Carolina.....Tigers due to win  
LSU over Mississippi State.....LSU defense tough  
Oregon over West Virginia.....Easy one for Oregon  
Missouri over Oklahoma.....Sooners weak this year

# Timberlake Orders Reinstatement Of Men's Basketball Intramurals

By Tom Weedon

The men's intramural basketball league will be reinstated this year, Coach J. S. Timberlake announced Tuesday.

The league was suspended last March because students littered the gym during games and because of a general lack of organization. The new season will start on Monday, December 5.

Coach Timberlake said there will be no entrance fee, or any restriction on the number of teams entering the league this year. Last year a \$12 entrance fee was required and there were 10 teams in the league.

League games will be held in the afternoons this year. Timberlake said that this should encourage day students to participate.

They were in the minority last year because games were played at night, he said. The games will be played on Mondays and Wednesdays from 4 to 7 p.m.

Teams rosters must be completed and submitted to Coach Timberlake by December 1. Coach Timberlake emphasized that players will not be allowed to change teams this year. This also plagued the loosely organized league last winter.

### Code Planned

A definite code of conduct for both league participants and spectators will be set up according to Timberlake. Although it is not yet complete, the code will prohibit smoking, eating and drinking soft drinks in the gym.

Doug Loughridge, Jimmy Jones and Gene Berg have been named to referee the games this year. Timberlake said that three referees were selected so there will always be enough officials. Timberlake said he is trying to find a fourth official.

These officials will be paid out of the school athletic fund. Last year, the referees were paid with the league entrance fees.

Other league plans released by Timberlake this week include awarding trophies to the top two

(Advertisement)

## Stores Adopt Plan For Easy Shopping

In many stores today you can just say "charge it" and get the things you need simply, quickly, and without waiting for payday.

Grocery stores have charge accounts, department stores have them, even dime stores have them.

Businesses have rapidly established charge accounts for the convenience of their customer. They know the good will of the customer is their most important asset.

Now even your laundry and cleaning can be taken care of in this easy manner. Just say "charge it" and get your suit or dress out in time for the weekend when you open a charge account with Meadow Laundry, 410-412 N. Harrison.

## Allen, Timberlake Win in Badminton

The two top-seeded players advanced to the semi-finals in the men's intramural badminton tournament last week.

The two top seeds, Coaches Ed Allen and J. S. Timberlake, won their matches over Steve Peeples and George Shaheen. Allen is top seeded in the upper bracket, while Timberlake is top seeded in the lower bracket.

In the other men's matches, Muse defeated Hayes; Jones defeated Hall; Bourne defeated Loughridge; Bergh defeated Bailie; Woodson defeated Peeples; and Stone defeated Gimball.

In the women's tourney, Thomas defeated Alexander; Sloone defeated Hodges; Tattenblatt defeated Welch; Gomez defeated Harris; Moody defeated Menard; Stevens defeated Stencen; Toam defeated Page; and Salisbury defeated Prosi.

Jupiter's gravity is so much greater than the earth's that a spaceman trying to walk on the planet would be crushed by his own weight.

Africa has spawned 20 independent nations since 1951. By 1961 it will have 26, compared with only four 10 years ago.



## Don't let washday worries get you...

No struggling, no scrubbing, no hand-wrecking soaps to worry about. No more waiting until payday to have the laundry done. Just come in to Meadow Laundry and say charge it.

## Meadow Laundry & Cleaners

410-412 N. Harrison St.

teams and selecting an all-star team at the end of the season.

Members of the all-star team will receive awards, and they will play a game against the faculty.

The league was organized largely through student interest last year.

Despite its lack of organization the league competition was regarded as the best ever. Both Coach Ed Allen and Miss Alexander, head of women's athletics here, said last year's competition was excellent.



These are the silver wings of a U. S. Air Force Navigator. As a flying officer on the Aerospace team, he has chosen a career of leadership, a career that has meaning, rewards and executive opportunity.

The Aviation Cadet Program is the gateway to this career. To qualify for this rigorous and professional training, a high school diploma is required; however, two or more years of college are highly desirable. Upon completion of the program the Air Force encourages the new officer to earn his degree so he can better handle the responsibilities of his position. This includes full pay and allowances while taking off-duty courses under the Bootstrap education program. The Air Force will pay a substantial part of all tuition costs. After having attained enough credits so that he can complete course work and residence requirements for a college degree in 6 months or less, he is eligible to apply for temporary duty at the school of his choice.

If you think you have what it takes to earn the silver wings of an Air Force Navigator, see your local Air Force Recruiter. Ask him about Aviation Cadet Navigator training and the benefits which are available to a flying officer in the Air Force. Or fill in and mail this coupon.

There's a place for tomorrow's leaders on the Aerospace Team.

# U.S. Air Force

MAIL THIS COUPON TODAY  
AVIATION CADET INFORMATION  
Dept. SCL011  
BOX 7608, WASHINGTON 4, D. C.  
I am between 19 and 26½, a citizen of the U. S. and a high school graduate with \_\_\_\_\_ years of college. Please send me detailed information on the Air Force Aviation Cadet program.

NAME \_\_\_\_\_  
STREET \_\_\_\_\_  
CITY \_\_\_\_\_  
COUNTY \_\_\_\_\_ STATE \_\_\_\_\_



• Rangers Bob and Joe, on snow patrol in a new area, have taken a short cut in their race to camp before an approaching blizzard...

RIGHT ACROSS OUR PATH! THE ONE GULLY WE DIDN'T KNOW ABOUT!

IT'LL TAKE HOURS TO GO AROUND THE BOTTOM-AND UP ABOVE, THAT SNOW LEDGE WOULD AVALANCHE AT A LOUD NOISE!



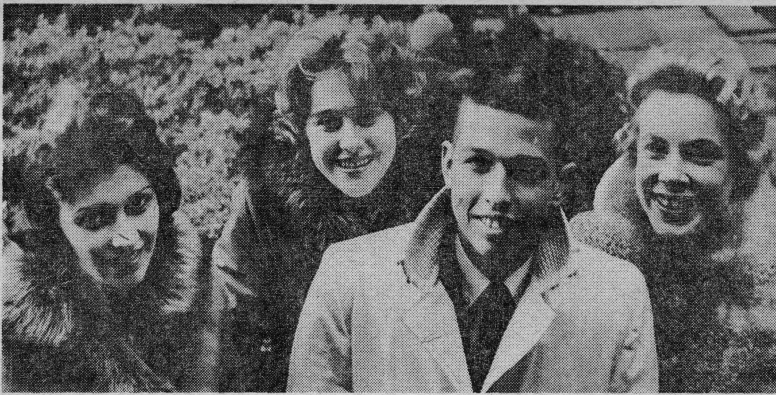
THE RIGHT TASTE BECAUSE

Viceroy's got it... at both ends



© 1960, BROWN & WILLIAMSON TOBACCO CORP.





**FRESHMAN CLASS OFFICERS**—Left to right, Nancy Gordon, vice-president, Mary Huss, treasurer and Dee Dee Knox, secretary, rally around Harvey Hennis, president. Not pictured is Joe Pellicane, SGA representative.

Carpenter Photo

## Psi Chi Grants Charter To Psychology Department

The National Council of Psi Chi Clubs has granted a charter to the Department of Psychology at RPI. This national honorary society has recognition of outstanding achievement by psychology majors as its purpose.

Graduate student Ray Narr is the president of this new group. Richard MacDougall, assistant dean of men, is vice-president, and Barbara Neese, a senior, is secretary-treasurer. Installation of these officers will be held late in November.

Prospective members must have a "B" average in psychology courses, and a "C" plus average in all other courses. Membership is open to undergraduates, graduates and workers in the profession who had made these grades while they were in school. Charter members are those who applied last semester for acceptance. After initiation, applicants

who meet qualifications will be accepted as regular members. There are 25 charter members, 17 graduates and 8 undergraduates.

The new Psi Chi Chapter plans to recognize achievement in psychology and foster interest in psychology in general. Jerry Hudson, graduate assistant and president of the Psychology club stated, "It's a feather in RPI's cap to have the psychology department awarded a charter." Advisor to the chapter will be Dr. Alfred Brophy, head of the department.

## Drama Department To Present 'Angel' December 7-10

(Continued from Page 1)

woman, who rules the Gant brood with never ending tyranny.

Jay Dunn will portray Ben, Eugene's older brother and only ally in the Gant family. Woody Eney will be Luke Gant, and Genevera Bell will be Helen.

Others in the cast will be Patricia Story, Carey Lee King, Richard White, Marshall Muraugh, Lillian Hutchison, Jean Biddle, Julia Field, Robert Roane, Priscilla Turner, Helen Milburn, Stanley Soble, Herbert Scott and Christina Fayle.

## SGA Asks For Student Cooperation

(Continued from Page 1)

ion Club representative, will discuss the proposal with their respective clubs.

The proposal allowing for an annual parent's week-end to be held in the spring was deferred for further study by the SGA activities committee. The proposal was made by Penny Weitzler, junior class representative.

The suggestion that the city be asked to clean streets in the area after the Evening College session in stead of in the mornings was made two weeks ago by Bill Greenlaw. This would leave the Franklin st. each side of which is closed one morning every week—open to day students.

Greenlaw, Freshman Advisory Board representative, said J. Garrett of the Richmond Department of Public Works would "take the proposal up with proper authorities to see if the street cleaning can be done at a more suitable hour."

## Accidental Club

The Accidental club of RPI, in co-operation with the Richmond Symphony women's committee, will sell tickets for the concert of George London, November 21.

Tickets will be on sale in the Rotunda next week from 7-9 p.m. The concert will be the following Monday at the Mosque at 8:30 p.m.

## Scholarship Drive

(Continued from Page 1)

was held Monday night in the Gym.

Student government leaders were enthusiastic about the drive. They expect it to be the best and most productive ever, according to Whitehead.



**Subscribe Now at Half Price\***

You can read this world-famous daily newspaper for the next six months for \$5, just half the regular subscription rate.

Get top news coverage. Enjoy special features. Clip for reference work.

Send your order today. Enclose check or money order. Use coupon below.

The Christian Science Monitor P-CH  
One Norway St., Boston 15, Mass.

Send your newspaper for the time checked.  
☐ 6 months \$5 ☐ 1 year \$10  
☐ College Student ☐ Faculty Member

Name \_\_\_\_\_  
Address \_\_\_\_\_  
City \_\_\_\_\_ Zone \_\_\_\_\_ State \_\_\_\_\_

\*This special offer available ONLY to college students, faculty members, and college libraries.

## Batty to Attend Chicago Meeting

RPI will be represented at the 36th annual meeting of the National Association of Schools of Music by L. Wayne Batty, director of the School of Music. He will attend the various sessions held at the Palmer House in Chicago November 25 and 26. In addition to being the official representative of the school Mr. Batty has been a member of the NASM since 1950.

Some 250 schools will be represented by the heads of the departments of music and by administrative heads of conservatories. The entire group will attend a Chicago Symphony Orchestra performance on Friday afternoon, and a luncheon on Saturday.

## One-Acts Thursday

Two one-act plays, "A Game of Chess" and "Breaking of Bread," will be presented in Studio Theatre, Thursday at 7:30 p.m.

"A Game of Chess," directed by Richard Askew, will feature Robert Drewery, Frank Fuller, and Wilbert Keys. The other play will star Jim Davis and Ed Putze and will be directed by David Wilburn.

**BE SHARP  
SHOP SMART**

**RAY 5 & 10c STORES**

927 W. Grace

**We handle clothing  
and a variety  
of student needs**



**It's what's up front that counts**

Up front is **FILTER-BLEND** and only Winston has it! Rich, golden tobaccos specially selected and specially processed for full flavor in filter smoking.



R. J. Reynolds Tobacco Company, Winston-Salem, N. C.

**WINSTON TASTES GOOD like a cigarette should!**