

YOU MAY INCREASE YOUR KNOWLEDGE  
OF FRATERNITIES AND SORORITIES ON  
THE RPI CAMPUS BY LOOKING FOR:

COCHURES LETTERS TO THE EDITOR  
BOARDS PETITIONS POSTERS DISPLAY  
OPEN DEBATES ORGANIZATION TALKS



**EDUCATIONAL SIGN**—This sign is one of several on campus which urges students to learn about fraternities and sororities and to campaign actively before the SGA-sponsored March 5-9 referendum.

## 1962 Class Sweethearts Named for May Court

Linda Messersmith, Alice King, Joy Bennett and Pat Bowman were chosen Tuesday as 1961-62 Class Sweethearts.

A selection committee picked a sweetheart and two attendants from each class. They will be members of the May Court at the May Dance this spring.

The Senior class sweetheart is Linda Messersmith, a Retailing major from Woodlawn. Her attendants are Sandy Kellam, an Occupational Therapy major from Nassavadox, and Ellen Hevener, a Distribution major from Swoope.

Alice King is the Junior class sweetheart. She is an Interior Design major from Portsmouth. Her attendants are Barbara Masengill, a Fine Arts student from Sanford, N. C., and Pam Murray, Distribution student from War, W. Va.

Joy Bennett was named as the Sophomore class sweetheart. She is majoring in Interior Design and comes from Burnsville, N. C. Attending her will be Sue Clotzman, an Applied Science major from Alexandria, and Shirley Critzer, a

Business major from Waynesboro. Sweetheart of the Freshman class is Pat Bowman, who is majoring in Commercial Art and is from Arlington. Her attendants will be Leigh French, a Retailing major from Newport News, and Phyllis Hilton, a Richmond Applied Social Science major.

Ten candidates from each class were interviewed by the selection committee during a tea at the home of Dr. Oliver. Members of the committee were Dean Pendleton; Dr. Raymond Hodges, head of the Drama Department; Mrs. Dorothy K. Fierst, associate professor in Retailing; Mrs. Oliver; John Davison, Freshman class president; Steve Yearick, Sophomore class president; Margaret Ziegler, Junior class president; and Dean Dowdy, the Senior class president.

The tea began at 1:00 p.m. Each class was allowed 45 minutes.

Serving at tea were Doris French, May Queen; Brenda Whitehurst, Maid of Honor to the May Queen; and Barbara Jenks, RPI's Apple Blossom Festival representative.

## Mid-Winters Features Covington's Orchestra

### Dance Tonight Will Kick Off Big Week End

By Sandra Turner

The Warren Covington orchestra will play for a concert and dance here tomorrow, highlighting the annual three-activity Mid-Winters week end.

Shout Party II, sponsored by the Sophomore class, will be held from 8-to-12 tonight in the gymnasium to kick off the week end. Music for the dance will be provided by the "Specks," a local combo. An admission charge of 50 cents per person will be in effect, and refreshments will be sold.

The Covington Band, which was contracted by the SGA for \$2,500, will play for the concert from 4:30 to 6:30 p.m. tomorrow in the gymnasium. Admission to the concert will be \$1 per person.

#### Dance Is Climax

Climax of the week end will be the annual Mid-Winters formal dance from 9 p.m. to midnight tomorrow in the Mosque Ballroom. A Latin-American theme, "La Fiesta del Invierno" or "The Festival of Winter," has been selected for the dance. There will be a ring figure.

Prices for the dance have been reduced by \$1. Admission to the formal dance will be \$3.50 per person and \$7 per couple. Guest bids may be obtained from a SGA representative in the Rotunda. Dormitory residents will be allowed free 1:30 a.m. lates for Mid-Winters.

#### One-Man Band

Covington, who formerly led the Tommy Dorsey band began his career when he played the trombone in his high school band in Pennsylvania. Since then, he has become almost a one-man band. He plays the trombone and the bongo drums, sings, arranges

(Continued on Page 4)

### Mid-Winters Plans

#### Tonight

8-11 p.m.—Shout Party II, sponsored by the Sophomore class, in the gymnasium.

#### Tomorrow

4:30-6:30 p.m.—Warren Covington Concert in Gymnasium.

9 p.m.-Midnight.—Mid-Winters Dance, featuring Covington band, in the Mosque Ballroom.



**Warren Covington Will Play for Mid-Winters**  
His Recordings Have Sold More Than 8 Million Copies

## Governor Is Expected To Endorse W&M Bill

Legislation separating RPI from the William and Mary College system has passed both houses of the General Assembly and was expected to be signed into law late this week.

Action by Governor Albertis S. Harrison Jr. on the bill, which also severs the Norfolk division of the William and Mary system and establishes separate governing boards for both institutions, must take place by tomorrow.

The amended measure was passed in the Senate by a 32-3 vote last Friday and cleared the House of Delegates Monday with an overwhelming vote of 93-0. Under a state constitutional provision, the governor has five days in which to act on legislation passed by the Assembly. Governor Harrison had already voiced approval of the proposed separation.

The original legislation was amended to provide for a 13-member board of visitors for each of the two separated schools instead of a seven-member unit as originally proposed, and to eliminate certain passages termed "offensive" to the present William and Mary board of visitors.

Eliminated by the legislation will be the present office of chancellor, held by Alvin Duke Chandler. In its place will be created the position of co-ordinator, which will have under its control the junior colleges of Richard Bland in Petersburg and Christopher Newport at Newport News.

Del. Russell M. Carneal of Wil-

liamsburg introduced the original W&M bill January 18, with the support of 70 members of the House. The board of visitors at Williamsburg opposed it by a 10-5 margin.

Should the bill be signed this week, as expected, the new RPI governing board members are to be named by the governor by July 1.

### Social Group Debate Set For Monday

A debate concerning the recognition of fraternities and sororities on campus is planned for Monday night.

The number of panelists and the time and place for the debate will be arranged by SGA President Pat Scott and Emmett Powell, president of the recently organized Students for Fraternities and Sororities club (SFFS).

The debate will be part of a four-hour educational program to inform students about these social organizations before the March referendum.

During February, representatives for fraternities and sororities may speak in the dormitories, subject to approval of the dormitory presidents. However, both sides of the argument must be represented, Scott said.

The SFFS will seek a seat on  
(Continued on Page 2)

### New System Is Smooth

## Enrollment Apparently Drops

By Alberta Lindsay

Spring semester registration figures released this week indicate that enrollment has decreased almost 500 students since the first semester.

Mrs. Ethel B. Riebe, registrar, reported that 4,082 students have registered for this semester, as compared with 4,627 for the fall session. Although students are still signing up for private music lessons, these persons are not expected to make up the 545-student decrease.

These music students will be added to the 272 part-time day students already enrolled. There are 1,892 full-time day students.

Mrs. Riebe said she was pleased with the spring registration. "It moved faster and smoother than

any registration since I have been here," she noted.

In commenting on the possibility of the one-day spring registration period recommended by the PROSCRIPT, Mrs. Riebe said, "Nothing would make me happier, but it would put a terrific work load on my office."

#### Sees Students Twice

Since the registrar must see each student twice—once when the student receives his card and registration information and again when the student checks out—it would be a lot for one day, she explained.

"I do plan to talk with Dr. Oliver and the department heads to see if, in the spring semester of 1963, we can register in one day," said Mrs. Riebe. "But it will always take two days in the fall because of the many new and transfer students."

"I would like to stress the importance of students pre-registering," she said. "It saves us time and trouble."

Students can also help by reading instructions and being ready to complete registration when they come to the check-out station, Mrs. Riebe noted.

The Evening College enrollment stands at 1,918, compared with 1,643 for the 1961 spring semester.

According to Melvin D. Fuller, director of the Evening College, this figure is the largest spring semester enrollment his school has ever had.

Mr. Fuller noted this is also the college's largest year from a standpoint of total yearly enrollment. Evening enrollment for both semesters totals 4,147. He said the previous high was 4,020, set in 1959-60.

# PROSCRIPT

901 W. Franklin Street, Richmond, Virginia



Pat Hensley, Managing Editor  
Sandra Turner, Associate Editor  
Virginia Gibson, Associate Editor  
Larry Prentice, News Editor  
Alberta Lindsay, Features Editor  
Tom Weedon, Sports Editor  
Nolan Kegley, Photo Editor  
Murray Hollis, Business Manager  
Represented for National Advertising  
by National Advertising Service, Inc.,  
420 Madison Ave., New York, N. Y.

Member:  
Associated Collegiate Press  
Virginia Intercollegiate Press

## A Time of Opportunity

With legislative action completed and Governor Albertis S. Harrison Jr.'s signature expected on the bill to separate RPI from the William and Mary college system, RPI faces a period of opportunity unequalled in its short history.

Under the law, the governor will appoint RPI's 13-member board of visitors by July 1. We feel that the effectiveness of the board during the school's early stages of independence will go a long way toward deciding the future of the school, which has advanced from a one-building school of social work in 1917 to a complex institution with an enrollment of more than 4,000 students today.

This board, it seems to us, will inherit numerous problems which must be dealt with effectively if RPI is to prosper in its independence and meet its additional obligations as a so-called "community" college.

Among these problems, not necessarily in order of their importance, are:

(1) A woefully understaffed faculty. At present, RPI is relying on a faculty made up of full-time educators and part-time professional men. While the value of experience and the qualifications of professional men to teach in fields in which they make their livings is not doubted, the large proportion of part-time instructors employed should decrease eventually. If RPI is to grow and command more respect in educational circles, the school must engage more full-time instructors who will be able to give their undivided attention to the instruction and development of their students.

(2) An overcrowded campus with many outdated facilities. There is little if any wasted space on campus. Some classes are so crowded that students get seats on a "first-come, first-serve" basis. And some of the school's facilities—such as the Administration Building—are "creaking and groaning" with age. In fact, on the third floor of this building, crowded conditions have forced some instructors to move their offices to rooms which should be used for storage purposes. Also, some instructors are being forced to share offices that are barely large enough for one person. Another important fact that should be mentioned here is that the General Assembly and former governors have consistently denied the school's capital outlay requests for additional dormitory facilities, apparently underlining the role RPI is expected to play as a community college.

(3) The need for an expanded liberal arts program. Only six credit English courses and four history courses are being offered in the day school this semester. These figures, taken from the school catalogue, show the limited scope of RPI's liberal arts program. If RPI is to fulfill its predicted role as a community college as well as a professional institute, a broad four-year liberal arts program will be necessary to replace the current two-year "transfer" program. In addition, in some cases, instructors who teach these courses are overloaded in both the number of students and hours they handle.

(4) The need for a more influential alumni association. The RPI alumni group, which has been in existence for slightly more than a decade, has quite understandably been able to do little in that short period to help the college. The newly elected president of this group, Brooks Traweck, says his association is now ready to assume a more active voice in school affairs. Let's hope so, for an active alumni association could and should help improve the school.

In summary, these are some of the problems with which the RPI board of visitor will be faced. The board will have to find adequate solutions to these and other problems if RPI is to make the most of its independence.

# Jenks Named Apple Princess

## Berryville Coed Will Participate In Annual Festival

By Jim Lawler

Barbara Jenks, a 20-year-old Commercial Art junior, will represent RPI at the 35th annual Apple Blossom Festival in Winchester May 2-5.

Barbara, a green-eyed brunette from Berryville, will participate as a princess in the in the court of Queen Shenandoah XXXV.

She was selected by a board of faculty members after the Student Government Association had consulted candidates.

Participation in the Apple Blossom Festival is by no means new to Barbara, as this will be her fourth appearance.

In 1958, she appeared as Miss Clark County; in 1960, as Miss Winchester; and in 1961, as Miss Honorary Out-of-Town Fire Chief. The Miss Winchester title also included an entry in the Miss Virginia Pageant and a one-week vacation for Barbara and her mother at Melbourne Beach, Fla.

### Former Class Sweetheart

Barbara was Sophomore Class Sweetheart of 1961 and is presently serving as Junior class SGA representative.



Barbara Jenks Will Be Apple Blossom Princess  
Berryville Coed Is a Sophomore in Commercial Art

Her hobby is horse-back riding, and for the past few years, she has been able to supplement her income by teaching horse-back riding on her father's farm, where her family rears horses.

She has also been active in the

4-H club work and is presently serving as an adult leader.

On being selected to represent the school at the festival, Barbara said, "Since I am familiar with the greatness of the festival, I am deeply honored to represent RPI."

## 'Hamlet'

## Davis Chosen for Lead In Shakespearian Play

By Charles Bryant

Jim Davis has been selected to play the leading role in William Shakespeare's "Hamlet," which will be presented as the Drama Department's third major production March 21-24.

Supporting Davis, who will play Prince Hamlet of Denmark, will be Bob Culver as Claudius; John Wilson, Horatio; David Wilburn, Laertes; Susan Herring, Ophelia; Helen Milburn, Gertrude; and Woody Eney, Polonius.

Others in the cast are Marshall Murdaugh, as the Ghost; Don Hayes, as Rosencrantz; Richard Askew, as Guildenstern; Frank Fuller, as Francisco and Fortinbras and John Jones as Osric.

Richard Foltz will play Bernardo and Fortinbras' soldier. Al Biddle is the Gravedigger; Bill O'Brian is Marcellus and Fortinbras' Soldier; Carey Lee King is the player king and the first lord and Jean Biddle is the player queen.

### Others in Cast

Richard White will play the first player and a messenger. Bill Reed is the poisoner and the first priest. Priscilla Turner is the first female attendant; Pat Earle is the second female attendant and a musician and Iris Berket, is the third female attendant and a mute.

Mary Johnson is a musician; Gaylena Murt is cast as a mute, and Bill Cassis is an attendant to the court. Lynn Sams and Frank Prien are Swiss guards.

Jim Davis had had important roles in "Five Finger Exercise" and "The Menachmi" this year. In addition, he has appeared in "Call Me Madame," "The Kids," "Twelfth Night" and "The Reclining Figure."

### Previous Roles

Bob Culver was seen earlier this year as the father in "Five Finger Exercise." John Wilson was last seen here in "The Boy Friend." David Wilburn played Eugene Gant in "Look Homeward, Angel," and Woody Eney has been seen in "The Reclining Figure" and "The Boy Friend."

Susan Herring had a lead role in

"The Defender" last year. Helen Milburn played in "Look Homeward, Angel" and "Plain and Fancy."

"Hamlet," which is generally considered one of Shakespeare's best known tragedies, is a story of revenge, revolving around Hamlet's plan to avenge the death of his father.

The production will be directed by Thomas R. Long, assistant director of Drama. Mr. Richard Higgins will stage sets for the play, and Miss Agnes David will do the costuming.

These persons have performed similar tasks for other Drama department major productions this year.

## Planned for Monday Social Group Debate

(Continued from Page 1)

Student Council soon, Powell said.

In order to gain a seat on Council, an organization must express interest, have a name and submit its constitution to the SGA president. The club is given a temporary seat on Council and the SGA Rules Committee reviews its constitution.

The rules committee suggests changes in the constitution, which is then returned to the club. After revisions, the constitution is again submitted. If the Rules Committee approves it, the Executive council votes. If it approves the constitution, the Student Council votes on it.

## P.B.L. Meets Tuesday

The Phi Beta Lambda (PBL) will meet at 5:45 Tuesday in room 203 of the Hibbs Building. Bud Minor, PBL president, said Monday that the organization will not sponsor a male sale this year.

## Letter to the Editor

## Fraternity Campaign Creates Student Interest, Reader Says

Dear Editor:

You have now witnessed two weeks of campaigning by interested individuals for the privilege of having fraternal organizations on the campus of Richmond Professional Institute. The atmosphere created by the brochures, bill boards, posters, and personal contact is to be regarded as unusual. Interest, which has been dormant for so long, has been inspired to a degree that has not equal previously, not even during the largest campaign of the year, the Student Government elections. Never before has the individual been so enveloped by a campaign organization at RPI, which is exactly what the Student's for Fraternities and Sororities has become. Part of the cause of the current situation is a small group who has presented its ideas based upon a sociological approach with a thorough analysis of each idea and its result. The personal contact idea developed from such meetings. A goal of two thousand students that must be informed is set with petitions used as an "excuse" to meet and discuss the question at hand.

The first two meetings held as open discussions to all students were basically question-and-answer sessions; the following open meetings will be informal information seminars.

What is the purpose of campaigning for the required 1,500 votes in the referendum? Why should a group of students work for an increase of interest among their fellow students? Why bother to study both sides of the question?

The reason for the campaign, as viewed after the previous two-week period with two more weeks to follow, is easily defined: when the first question, "What is a fraternity?" was asked; when the first curious student asked, "How will fraternities and sororities benefit me?" and when approximately seventy students attended the open meetings. This was when we knew that surely something had sparked their interest.

Let us see if their interest to vote in the referendum March 5th through the 9th is as great.

Respectfully submitted,  
CAROLYN OWENS



**INTRAMURAL CHAMPS**—Members of the pennant-winning Rebels of the men's intramural basketball league are shown after they clinched the regular season championship. Pictured (l-r) Tommy Wright, Tommy Walsh, Bob Terrell, Kenny Sullivan, Jimmy Jett and Robbie Showalter.

## Rebels Top 712 Dorm To Cop Intramural Title

**BULLETIN:** The undefeated Rebels clinched the intramural championship Tuesday as they rolled over 712 W. Franklin st. dormitory, 37-27, for their tenth straight win. The Rebels, with two games left to play, have a three-game lead over the second-place Hastings' Hasbeens.

**By Bill Jamerson**

The undefeated Rebels scored their ninth straight win and assured themselves at a tie for the intramural championship by defeating the second place Hastings' Hasbeens, 30-29, last week.

The Rebel's win placed them three games ahead of the Hasbeens with only three games left to play.

**In Hot Water**

The Rebels found themselves in hot water early in the game as the Hasbeens, led by 6'7" center Cliff Brown, scored the first seven points of the contest. That seven points turned out to be the biggest margin of the entire contest, as the Rebels pulled within four points of the Hasbeens at half. Rebel coach Jimmie Jett charged in the Rebel defense to hold Brown to six points in the second half. Don "Flea" Lee, a newcomer to the Rebel squad, led the team down to stretch as he came off the bench to tally seven points. Marty Robertson put the game on ice for the Rebs as he tallied two

foul shots in the closing seconds of play. Brown led all scorers with 17 points.

Also on Wednesday, the 712 W. Franklin St. Dormitory brought its record to 6-3 by beating the New Vets, 52-30. Frank Williams of 712 led all scorers with 22 points.

**Ohio State Loses**

Last Thursday, the Lafayette Dormitory team brought its record to 6-4 as it trounced Ohio State, 45-26. Ed Coffman and Charles Leith of Lafayette led the scoring with 17 and 13 points, respectively.

Monday, the New Vets registered their first win of the season as they nipped Ohio State, 41-40. Leon Haynes of Ohio State led all scoring with 22 points. Jack Pack led the New Vets with 20 points.

In the late game Monday, the Hasbeens brought their record to 7-3 by defeating the S.O.T.S., 44-36. Lee May and Glenwood Howland the S.O.T.S.'s potent one-two punch, scored 14 and 12 points. Fred Kahway led the Hasbeens balanced attack with 12 points.

The loss reduced the S.O.T.S.'s record to 5-5 and hurt their chances of making the playoffs although they were only one game behind the fourth place Lafayette team.

The season will end next week, after which a post-season tournament will be held.

## On the Road Tonight

# RPI Will Play Southeastern

**By Tom Weedon**

RPI's basketball team will try to get back on the winning path tonight when the Green Devils travel to Fort Myers in Arlington to play Southeastern University.

The Green Devils and the Hawks have played once this season and the Devils won here by 65-57.

The Green Devils will be trying to snap a two-game losing streak and at the same time attempt to win their first game on the road. The Green Devils are 6-5 at home and are 0-7 on the road. The Green Devils over-all record stands at 6-12 and 2-8 in the Little Eight.

After tonight's encounter, the Green Devils will have only three remaining games. The Devils will play Hampden-Sydney on Tuesday and then return home for a two-game series with Pembroke next Friday and Saturday. This series will windup the season.

**Three Routs**

The last three games the Green Devils have played have all been routs. The Devils trounced Lynchburg last Thursday and then were routed themselves in games by Randolph-Macon and Roanoke.

The RPI-Lynchburg game was strictly no contest from the opening minutes. The Green Devils took an early lead, and by half-time the Devils were leading 40-21. The final score was 88-59, as all 10 players on the Green Devils squad contributed to the scoring column. The Devils had three men in double figures. Bobby Muse had 37, Sonny Taylor, 12; and Jimmy Jones, 11.

**Devils Hot**

The Green Devils shot 66 per cent from the floor, and the score would have been much larger if the Devils had not missed 21 of 47 free throws.

On Saturday night, the Green Devils were defeated by Randolph-Macon, 87-61.

The Yellow-Jackets got off to a fast start with Frank Kamaniski and Al Roberts working effectively both inside and out.

At halftime, the Yellow-Jackets found themselves comfortable ahead, 44-23. The Green Devils' offense picked up considerably in the second half; however, by this time, it was too late to overcome the first-half deficit.

**Muse Scores Big**

Bobby Muse continued his great scoring for the Green Devils as he tossed in 32 points. Steve Peeples was the only other Green Devil to score in double figures. He added 12.

The Green Devils' Monday night game with Roanoke was probably RPI team's poorest outing this

year.

The Devils could score only 10 points in the first 12 minutes of play and only 19 in the first half. The defense was even worse than the offense, as the Maroons scored 52 points in the first half and 47 in the second half.

The Maroons hit 45 per cent of their shots while the Green Devils hit 31 per cent. Not only was the Maroons shooting percentage much better than the Devils, but they

were outshooting the Green Devils as the Maroons got 95 shots to the Green Devils 57. Final score, 99-50.

Bobby Muse once again led the Devils' scoring attack as he scored 21 points. Muse has scored at a 30.4 clip over the last six games. During this span he has scored 184 points. He has a seasonal average of more than 23 points a game, which is second best in the state.

## Career Cues:

**"Whatever your major, make sure to include a course in 'people'!"**

*W. Emlen Roosevelt, President  
National State Bank, Elizabeth, N.J.*

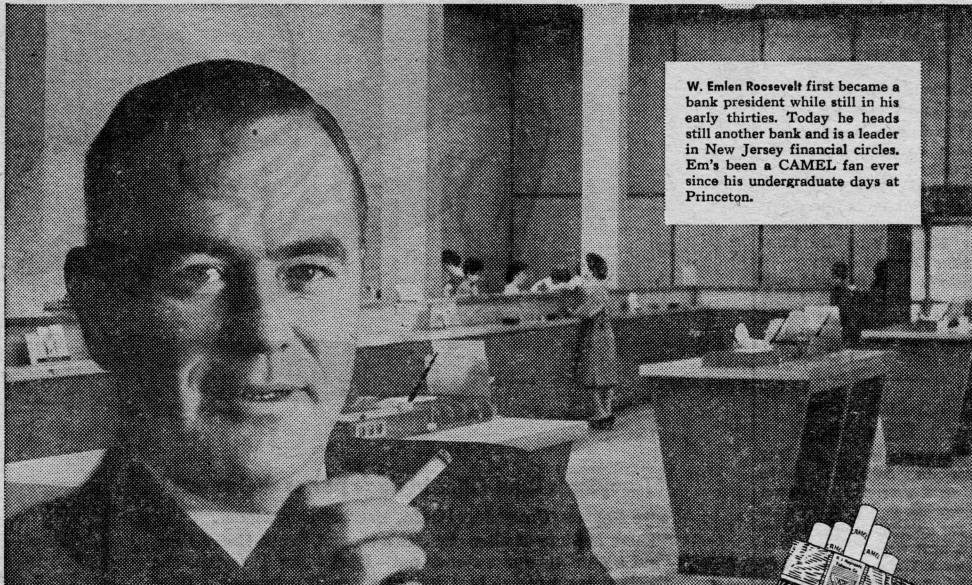
"If my college adviser had prophesied that studying psychology would some day help promote my career in banking, I'd have scoffed. Yet that is exactly what has happened. And when I think about it now the reason seems obvious. The facts and figures of banking, or of any other field, are mechanical devices. They take on real meaning

only when related to people.

"Good psychology is also the basis of all teamwork. And, since most of today's business and scientific problems are too complicated for 'one man' solutions, teamwork is essential. If you want to be a valuable team player, and a likely candidate for captain, be the person who understands people. Learn what it takes for people to work together in harmony. Learn how to win trust and confidence. Learn basic human psychology.

"Bear this in mind, too. World tension, community tension, business tension, even family tension are the facts of everyday life. The more you know of human behavior, the better prepared you will be to deal with these problems.

"So, if you have the chance, take a course devoted to 'people.' Your class adviser can probably help you fit a psychology elective into your schedule. I don't think you'll regret it... I know I didn't."



W. Emlen Roosevelt first became a bank president while still in his early thirties. Today he heads still another bank and is a leader in New Jersey financial circles. Em's been a CAMEL fan ever since his undergraduate days at Princeton.

If flavor is your major satisfaction in smoking...

# Have a real cigarette-Camel

THE BEST TOBACCO MAKES THE BEST SMOKE



R. J. Reynolds  
Tobacco Company  
Winston-Salem  
North Carolina

**\$775 Turned In****Scholarship Drive Proceeds Lagging**

Scholarship drive contributions totaling approximately \$775 had been turned in Monday, SGA Treasurer Pat Story reported.

These contributions represent a little more than one-third of the \$2,000 goal set for the drive.

Pat noted that 14 organizations have not reported the proceeds of their activities. She said she expects final contributions to be made in about two weeks.

The highest contribution to the drive was made by the Senior class. It met its \$200 pledge by sponsoring a Speak-Easy project in the Cafeteria November 19.

**Roaring '20's Theme**

For this activity, the class enacted a Roaring '20's theme, complete with two musical groups. Other phases of the activity included a Charleston dance routine, a Barbershop Quartet and a magician's act.

The second highest contribution was made by the Sophomore class, which led Shout Party I in the gym to reach its \$100 pledge.

Other high contributions were received from the Freshman class (\$80) and the Grace Hospital (\$48).

The only donation made thus far is \$15 by the Psi Chi, honorary psychology fraternity. This group was not required to contribute to the drive because it was not seated on Student Council when the drive started. The organization has since gained representation.

**Proceeds Stolen**

The Baptist Student Union contributed only \$20 of its \$30 pledge. It reported that \$15 of the proceeds from its doughnut sales in the dormitories November 13-16 was stolen.

The \$2,000 goal set for the drive was the highest in its short history. This figure represented a \$300 increase over the previous year's goal.

Activities for the 1961 drive were extended over a two-month period. Student government leaders originally expressed hope that the extended drive would result in increased participation.

**Covington to Play For Mid-Winters***(Continued from Page 1)*

the orchestra's selections and dances the cha-cha. He often gives a cha-cha demonstration at his performances.

Covington has played with Mitch Ayres and the Les Brown and Gene Krupa bands. He led the Tommy Dorsey band for three years after Dorsey's death.

Covington's band has sold over 8 million records on the Decca label. He received a gold record for more than one million sales of "Tea For Two Cha-Cha."

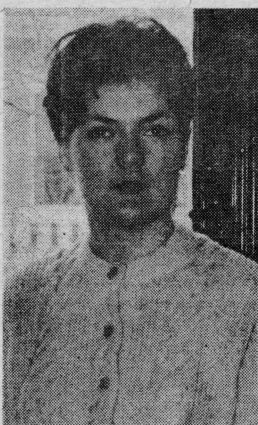
**Teaching Interviews Planned Next Week**

Seniors interested in teaching positions in Arlington public schools next year should contact Miss Stephens in the Admissions Office for an appointment for interviews next week.

Charles J. Walsh of the Arlington Public Schools System will be here Tuesday to interview at 10 a.m.

Stuart M. Beville of the Prince William County School will also interview on Tuesday beginning at 9:30 a.m.

Grady Ballard, of Anne Arundel County School in Maryland will interview on Friday from 9 a.m. to noon.



SGA Treasurer Pat Story  
Contributions Lag

**Two Delegates Plan to Attend Mock Meeting**

Two members of RPI's Wesley Foundation will attend a Model United Nations General Assembly at the Norfolk Division of the Colleges of William and Mary this week end.

Dorothy Cobb, a junior Fashion Illustration major, and Linda Murphy, a sophomore in Journalism, are the local delegates to the state-wide conference, which is being sponsored by the Methodist Student Movement.

The mock assembly is an annual attempt to promote understanding of the UN organization, its problems and the attitudes of member nations. Each college represents a country.

Delegates meet in committees, where they introduce bills. If these bills are passed by the committees, they are submitted to the General Assembly (the entire UN membership), subjected to open debate and then voted upon.

RPI will represent Denmark.

**RPI Professors Show In Exhibit at Museum**

William Bevilaqua and Charles Renick, both faculty members of the Commercial Art department, and Marilyn Bevilaqua, a former faculty member, have art works in the current exhibition at the Virginia Museum of Fine Arts.

The Virginia Artists Rotating Exhibition is scheduled to run through March 29 at the museum.

William Bevilaqua, assistant professor of Commercial Art received his degree from RPI and his MFA from the University of North Carolina. He has also exhibited in the Library of Congress and in Abingdon Square Gallery in New York.

Charles Renick, associate professor of Commercial art, received his BFA and MFA degrees from RPI and has been teaching sculpture here for eight years. His

work is on exhibit at St. Matthew's church and at the Jewish Community Center.

Mrs. Marilyn Bevilaqua received her BFA from RPI and then taught here and at Westhampton College. She is now teaching art history at the Medical College of Virginia and conducts studio courses at the Virginia Museum.

**Instrument Is Missing From Music Building**

A French horn has been reported missing from the instrument room in the basement of the Music Building on February 6.

The instrument is a Conn Single French Horn in F with factory serial number 877566 and model number 04D10.

**STUDENTS! RENT**  
A Fully Equipped — 1962  
CORVAIR FALCON RAMBLER  
**BUDGET RENT-A-CAR**  
OF VIRGINIA  
5 Dollars Per 24 Hour day 309 E. Grace St.  
5 Cents Per Mile 643-6683

**HONESTLY**  
*We do the BEST CLEANING in Town!*  
**Meadow Laundry & Cleaners**  
410 N. HARRISON  
Just say charge it



**"Tareyton's Dual Filter in duas partes divisa est!"**

says Sextus (Crazy Legs) Cato, Bacchus Cup winner.

"There are lots of filter cigarettes around," says Crazy Legs, "but e pluribus unum stands out—Dual Filter Tareyton. For the best taste of the best tobaccos, try Tareyton—one filter cigarette that really delivers de gustibus!"



**DUAL FILTER**  
**Tareyton**

Product of The American Tobacco Company—Tobacco is our middle name © A.T.C.