

Registration Tops 6,370; Enrollment Largest Ever

This fall's tentative enrollment figure of 6,370 has passed last year's total enrollment figure, and is still climbing.

The latest available count of 3,270 shows total daytime enrollment as of Tuesday, September 22.

Mrs. Sophia Hodges, acting registrar, said that she expects final fall enrollment to show an increase of 400-500 over last year's total.

In addition to these day-time students, evening college reported 2,726 students registered during the first week of registration. About 400 more are expected to take advantage of late registration before the final deadline, according to John A. Mapp, director of the evening college.

About 1,320 new students were expected at RPI this fall. This figure was based on the number of accepted applicants by the end

of the week preceding registration. Of this number 471 were expected to be boarding students and the other 849 day students. A more up-to-date revision of these figures is not available at this time.

Last year's total enrollment of new students was 1,035.

Departmental figures have not been estimated at this time.

Classroom space problems have been partly alleviated by division of three classrooms in Hibbs building and by acquiring the use of seven classrooms in the Mosque, said Mr. Mapp.

Mr. Mapp said of the increasing enrollment in the evening college "It is gratifying and I think it is a real tribute to both the faculty and the students at RPI because it is only when we have satisfied customers that we have this steady basic growth that RPI has had in recent years."



Student Identification Cards Are Distributed
Freshmen Received Theirs Friday, Others Thursday

PROSCRIPT

Second-class postage
paid at Richmond, Va.

RICHMOND PROFESSIONAL INSTITUTE

Published weekly (during the
school year) except during holi-
day and examination periods.

Vol. 45—No. 1

Richmond, Va., Friday, September 25, 1964

Tel. 353-2711

Alpha Delta Rho Gets \$800 For Books

Alpha Delta Rho, an organization of Distribution students, sold almost \$800 worth of used books during the first five hours of operation of its student book exchange Monday.

Landon Woolridge, Sophomore Distribution major from Yorktown, student Book Exchange manager, said almost every book in the store was sold by Monday afternoon.

Profits from the book exchange are being added to the Alpha Delta Rho Scholarship.

Campus Grows at Rapid Rate

By Jeff Hudson

RPI is growing.

Buildings are being purchased and renovated.

Former apartment buildings are being converted into dormitories. And old buildings, in use but due to fall to the demolition crews, will make way for more modern ones.

Off-campus space is being rented for use as classrooms and offices. In the already congested building,

shifting is going on to make every inch of space count.

A 68-year-old Victorian mansion at 916 West Franklin st. is to serve as the first Student Activities Building in RPI's history.

The building was the headquarters for the Catholic Woman's Club and, earlier was one of the city's more fashionable residences. It was purchased from the woman's club this summer.

Ornate Interior Noted

The building has parquet floors, marble mantelpieces, ornate woodwork and paneling, stained glass windows and a handcarved staircase. The Student Activities Building will be decorated so that it will have club-like atmosphere.

According to Richard MacDougall, dean of men, ping pong tables, the school yearbook and creative magazine, the Student Book Exchange, and some clubs eventually will occupy the upper two floors. An automatic laundry is planned for the basement.

"Work on the building is slow because of fire regulation and other such formalities," said Russell Johnston, dean of students.

"But things are beginning to speed up. There will be no extensive renovation done to the building. It will be cleaned and painted. The furniture for the first floor

lounge will arrive soon, and the Slater Food System will begin there after the first of October. It will be run by the Student Government Association."

Monroe Terrace Acquired

Monroe Terrace, a 12-story apartment building on the western edge of Monroe Park, was purchased from E. Claiborne Robins of Richmond. The purchase was made by the Board of Visitors and the RPI Foundation, an independent group formed to help RPI.

The structure, built in 1913, is to

be used as a girls' dormitory late in 1965 after all the tenants have been moved out. Currently, about 150 coeds are living at Monroe Terrace. More will be moved there from the dormitory at 923 Park ave. later in the year, and the latter dormitory will be occupied by men students.

This summer, Richmond's City Council authorized RPI to use 7,036 square feet in the north wing of the Mosque for an annual rental of \$1.25 per square foot.

The Council was later asked by
(Continued on Page 4)

Dean Johnston Returns After Doctorate Work

Dean of Students Russell A. Johnston, who has returned to RPI after a year of working on his doctorate degree at the University of Kentucky, said the most challenging part of his job here was "the functions related to student activities."

Dean Johnston came to RPI in 1953 as a student in the School of Business from Fluvanna County. He became a graduate assistant in the School of Business after receiving a bachelor's degree in 1956.

He got his master's degree here in 1958 and taught business classes from 1956 through 1962.

While at the University of Kentucky between August, 1963, and August, 1964, Dean Johnston's duties here were taken care of by Richard E. MacDougall, dean of men.

Dean Johnston, who deals with situations arising in connection with the honor system, loans, scholarships and student activities, summarized his job as having the responsibility for the "total students' personnel functions."

"Shares" Responsibility

"But," he said, "there are many people with whom the responsibility is shared."

As dean of students, Mr. Johnston is faculty advisor to the Honor Court and the Student Government Association. He also is a loan and scholarship officer and, in this, works with a student board."

He said since the student body includes a large member of com-

muting students, it is especially hard to get all students interested in college community life.

Dean Johnston feels that participation in the activities within the college community is an important part of a student's college life.

Since returning to Richmond, Dean Johnston says that he has had little time for outside hobbies and interests. At the present he is writing a dissertation on the "study of instructional practice in college schools of business."

Dean Johnston now holds the rank of associate professor in the School of Business and teaches a class in Reading and Cases in Personnel Administration.



Russell A. Johnston
Dean of Students

Psi Chi Wins Commendation

The Southeastern Psychological Association has awarded \$300 and a letter of commendation to the RPI chapter of Psi Chi, national honorary psychology fraternity.

Dr. Edwin R. Thomas, head of the psychology department, said the award was made because the RPI chapter did more than any other chapter in the southeast.

Last year Psi Chi took field trips to Lynchburg Training School and Central State Institute in Petersburg.

The chapter also made a financial contribution to the Virginia Psychological Association legislative fund and set up a special room for counselling services here.

Rat Week Starts Monday For Freshmen Rodents

By Ken Boettcher

There will be no "hole" on the RPI campus big enough to offer safety to the possible 1,300 freshmen who will take part in Rat Week which begins officially on Monday at 8 a.m.

During the first four days of the week, Monday through Thursday, members of the Junior class, who may be required to first show their class membership cards, may ask the "rats" to perform "small favors" or tasks.

All Freshmen participants will be required to wear Rat Hats from 8 a.m. to 6 p.m. These hats may be purchased for \$1.25 in front of the Administration building. However, participation is not compulsory.

Rats must wear signs which give their name, local address and telephone number, major, home town and state, age, height and weight in inches and ounces, and their availability. They must carry name brand cigarettes (filter and non-filter), matches, chewing gum, a rat trap, a baby bottle, and a tooth brush.

Respect a "Must"

The new underclassmen must be respectful to upperclassmen, especially juniors, addressing them as "sir" or "ma'am" and tipping their "rat hats."

Rats must commit to memory the definition of a rat, and the purpose of the honor code and be able to recite either when requested by a junior.

(Continued On Page 2)

Openings Features Morrow Orchestra

Buddy Morrow and his orchestra, who recorded "Night Train" and "One Mint Julep," have been contracted to play at Openings dance in the Mosque ballroom on November 7.

Openings dance, also known as the Harvest Ball, is sponsored by the sophomore class in co-operation with the Student Government Association Dance club.

Dance club cards are on sale today at the ticket booth in the Rotunda and will be on sale at all dormitories next week, according to SGA Dance club Chairman Tony Woolford.

Openings will last from 9 p.m. until midnight with free 1:30 a.m. lates for all women dormitory students.

Wands and Wonders

The student stared blankly at his schedule card, scratched his head, and wondered how an entire department could have vanished.

A passerby might automatically classify him as a new student. No, the thoroughly-confused student is an upper-classman. He is a victim of expansion.

During the summer the fairy godmother of progress touched the campus with a magic wand of growth. She left behind badly-needed dormitory space, classrooms and puzzled students.

Approximately 1200 new students joined more than 2000 returning day school students in muttering, "Now where is that class; it must be here somewhere."

Meanwhile whole departments have vacated their former quarters and moved to new locations. The switchboard operator is kept busy revealing the whereabouts of the missing instructors and classes. Students wander up and down halls seeking their classes. The sounds of construction from the new Science Building wing provides the melody for the song of progress.

Now the lull of routine begins to penetrate the confusion as students settle down to another year of classes and college activities.

Let us take a glance at what that magic wand started here.

For the first time in its 47-year history, the campus has a student center. The building at 916 West Franklin st. is intended as a gathering place for students.

The campus grows larger and taller with the addition of the 12-story Monroe Terrace which houses 142 women students.

January is the tentative date for beginning the extension of the Hibbs building. Lee House dormitory will be torn down to make way for the expansion and girls living there will be moved to Monroe Terrace. The new extension will include a cafeteria and classrooms.

The north wing of the Mosque is now occupied by faculty offices and classrooms. This space was acquired only two weeks ago.

The new Science building wing with classrooms and laboratories for the Schools of Applied Science and Engineering Technology and a 200-seat lecture room is scheduled for completion in March.

RPI's physical growth is necessary to accommodate the record enrollment of approximately 6,370 day and evening students.

Forty-seven new full-time and part-time faculty members have been added to handle additional class loads.

Registration by IBM marked another new phase of growth.

New courses and new programs within the school are another example of the capacities of the college.

That the fairy godmother worked overtime this summer is seen everywhere, and she will not pause for a rest. Her wand will flash many times in the coming years. She alone knows the future of the campus and we understand that she orders her wands by the gross.

The Prize

In the world's broad field of battle,
In the bivouac of Life,
Be not like dumb, driven cattle!
Be a hero in the strife!

Lives of great men all remind us
We can make our lives sublime,
And, departing, leave behind us
Footprints on the sands of time.

—Longfellow

Doors opened this week. Freshmen saw the thresholds of a new world; upperclassmen again have stepped into a place of academic air where knowledge is keen stuff.

The doors lead to a long hallway. A corridor with anterooms, large chambers and endless darkness with one exit.

Walk briskly through the door. Go into the unknown, explore the niches and untouched, enter into the passage of life and take what is rightfully yours by paying the price of intellectual pursuit.

Don't stop. Heed no warnings but those of your heart. Blur out your mind, inquire of the sages, never default to King Complacency.

Be protected from no random gusts. Let the gales of worldly congnition riddle the tireless mind. Churn no thoughts of remorse of semi-gladness.

Step over those who fall beside . . . for the prize is yours for the taking.

C.R.H.

PROSCRIPT

901 W. Franklin street, Richmond Virginia



Sandra Carolyn Beale, Editor
C. Richard Harrison, Managing Editor
E. C. Jones, Jr., Business Manager
Kenneth Wayne Boettcher, News Editor
Samuel Cary Shield, Sports Editor
Jeffress Frances Hudson, Features Editor
P. A. Gormus, Jr., Photo Editor
David A. Harvey, Photo Editor
Represented for National Advertising
by National Advertising Service, Inc.
420 Madison Ave., New York, N. Y.
Member:
Associated Collegiate Press
Virginia Intercollegiate Press

Letter to the Editor

'Inconsistency' Cited By Correspondent

Editor, the Proscript

During the registration period for both freshmen and upperclassmen last week, every student took the Honor Pledge before he was registered. Each student willingly took this oath, understanding "that his matriculation in the college presupposes his voluntary observance of the honor system of self-government," as is stated in the 1964-65 Bulletin — Richmond Professional Institute.

However, when these same students attempted to purchase textbooks at the college bookstore several days later, they were forced to surrender to an attendant whatever articles they carried. Only after these articles were deposited in a paper bag and the bag placed

near the bookstore entrance were the students allowed to enter the store.

Another obvious inconsistency is the sign one sees when entering or leaving the library:

"When leaving the library please, show all books and have brief cases checked."

This library procedure, in addition to that of the bookstore, suggests that someone apparently lacks confidence in our Honor System. In the classroom, the student is permitted to take on the full responsibility of the Honor System, but elsewhere that's another story.

Respectfully,
B. W. LAWTON

Ratting Starts Monday For About 1,300 Frosh

(Continued From Page 1)

Last in the long list of rules, he will yell "Hi Y'all!" before entering the cafeteria and he must await on junior's permission to enter.

Rat Court, composed of the Junior class officers and other selected members of the class, will convene each day at noon in Shafer Court. Disobedient rats may be summoned to the court at the request of a junior.

The 10 members of the court are Paulette McCall, Art, Roanoke; Gordon Comer, Distribution, Roanoke; Cathy Canady, Commercial Art, Alexandria; Howard Koch, Distribution, Richmond; Kathy Holdsworth, Art Education, Alexandria; Ray Walker, English, Falls Church; Alois Alford, Art, Richmond; John Welch, Technology, Charlottesville; Judi Chatham, Costume Design, Dalton, Georgia and

Sam Shield, Journalism, Newport News.

For those rats who survive the ratting by the juniors Monday through Thursday, Friday will be designated as Turnabout Day, and rats may gain vengeance by asking favors of the then subservant juniors.

At a Thursday evening rally in Shafer Court, a Freshman Rat Court will be chosen from those who have co-operated most throughout the week. From this court, a new Rat King and Queen will be chosen at the Rat Dance to be held the following Saturday night in the gymnasium. Music for the dance will be provided by the Mustangs, a local rock and roll combo.

Activities Building Called Milestone

Russell A. Johnston, dean of students, told the Student Government Association Senate Monday night the new student activities building "is a milestone in the history of RPI."

Dean Johnston said it was the first time in the history of the college that such a project has been successfully undertaken.

"What goes on in the building from now on is going to be the responsibility of the SGA," he said.

Tony Woolford, SGA president, told the Senate that plans for the activities building were almost complete. He said the first floor will be used for student lounges and the second floor for conference rooms.

Woolford said at the present time visiting architects have put limits on the number of students allowed in any room at one time for safety purposes.

In other Senate action, Mary Lou Deal, sophomore class senator, and Howard Koch, junior class senator, were appointed as members of the joint SGA publicity committee.

Yearbook PhotoHours Are Listed

Full-time students who have not made appointments to have pictures taken for the 1965 edition of the Cobblestone may do so this afternoon in the lobby of the Hibbs Building. Dennis Cruse, Junior, Advertising from Gastonia, N. C., editor of the annual, announced that appointments may be made next week at the Student Activity Building.

Cruse also stated that ideas and rough sketches for the Cobblestone cover are being requested by the staff. They should be left in the Cobblestone mail box on the first floor of the Administration Building by September 29.

Although staff members have made an effort to see that all students obtain appointments, Cruse said a sizeable number of students have not indicated their intentions.

"There will be no charge," he asserted, "Since all costs are to be satisfied via the Student Activity Fund, into which goes \$5 per student for each semester from the initial tuition payment."

Annual pictures of underclassmen will be taken September 28 thru October 9, 9-12 p.m. and 1-3:30 p.m.

Hours Listed

Seniors and graduate students are scheduled October 12-16 and will observe the same hours, Cruse said.

Freshmen, sophomore and junior men are asked to wear a white shirt and dark coat and tie. Women will wear a white or pastel blouse with round collar.

For graduate and senior men, a tuxedo coat and tie will be provided. Drapes will be furnished for senior and graduate women.

Appointment cards will be mailed reminding students of date, time, place and dress for their pictures.

Organization pictures will be taken beginning October 5.

The 1964-64 annual will include pictures of Virginia's Governor Albert S. Harrison, Jr. and the RPI Board of Visitors, Cruse stated.

More photography and less editorializing is the aim of this year's staff.

Inter-Collegiate Press of Kansas City, Kansas are the publishers. Heritage Studio, 8800 block Three Chopt road, will take the portraits.

Law Course of Study Is Inaugurated at RPI

This week marks the first official year of RPI's law enforcement program.

There are two faculty members. The students are expected to number up to 75.

More than a dozen law enforcement agencies from throughout the state are represented in the class.

New Faculty

The two new faculty members are Carroll R. Hormachea, a sociology instructor, and Lear B. Reed, a former member of the Federal Bureau of Investigation and a retired army colonel.

Mr. Hormachea, who has been named director of the program, holds a bachelor's degree and a master's from Trinity University. He is working on a doctorate.

Reed will instruct courses in police science, organization and administration. He is a lawyer by profession, and nationally known for his work in police organization.

He also has 14 years' service with the FBI and is a veteran of World Wars I and II.

The curriculum requirements for the first year are five liberal arts courses and one law enforcement course. In the second year more emphasis will be placed on law enforcement courses. Eventually, the program may be extended to four years, a spokesman said.

Lockers Available

Lockers for the use of day students are available in the basement of the Administration building and in the Gymnasium, according to the Auditor's office.

There is no charge for use of the lockers, but it is requested that students keep them locked and clear them out at the end of the Spring semester.

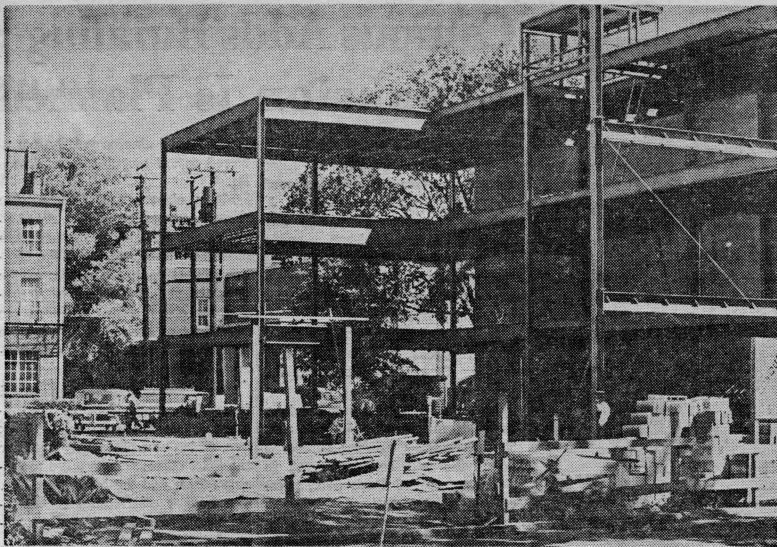
Students may obtain a locker by placing their own lock on any vacant locker.

Campus Calendar

September 27—Alpha Sigma Sigma picnic, Forest Hills Park, 4-9 p.m.

September 28—Rat Week begins.

September 29—Phi Beta Lambda meets, 4:45 p.m., Hibbs 303.



—Gomus Photo

Another Change in RPI's Face

Framework of Science Building addition goes up on Park ave. It is but one of many major new projects about the Cobblestone Campus. (See story on Page 1, other pictures on Page 4.)

Things Are Different

Six Lettermen Have Returned Pleased Coach Allen Reports

By Sam Shield

"Every year is a rebuilding year."

That's what basketball Coach Ed Allen said last year.

And for the past four years Coach Allen has found himself in the process of grouping a new basketball unit at the beginning of each season.

This year, the Rams have only one player missing from the preceding squad — George Shaheen. Shaheen, who in his four years here scored a record 1,322 points, had been the previous year's only returning letterman. He also was a member of the Little Eight Conference All-Star team for three years and averaged over 20 points a game.

"He'll be extremely hard to replace," Coach Allen said.

Returning lettermen this year are Sophomores C. G. Winston, a Richmond business major; Johnny Magill, Richmond, Applied Social Science major; Bill Parker, Sandston, Applied Social Science major; Bill Bourne, Falmouth, Business

major, a Junior, Jerry Harding, Physical Education major from Richmond and Senior, Bubba Crone, Richmond Physical Education major.

All-Star Last Year

Winston made the Little Eight Conference All-Star team when he was a freshman. He ranked fourth in state college scoring, with a 22.3 average, set a team record of 47 points in one game (40 in one half), and scored 512 points during the season.

"Winston will be the nucleus of this year's team," Coach Allen commented.

The Rams' first practice session will begin October 12. The gym will be open every afternoon for practice for those students who intend to try out for the team.

RPI this year is a member of the National Association of Inter-Collegiate Athletics (NAIA) for the first time.

"Even though we're members, we have to sit out one year on probation," Allen said. All teams entering the NAIA for the first time must sit out their first year of membership.

Only State Member

"The NAIA will improve the caliber of the teams we play," Coach Allen said. RPI is the only

team in Virginia to belong to the association.

The Rams will open this year's ledger at Southeastern College, Washington, on either December 3 or 5. RPI downed Southeastern in a home game opener last year but dropped its next seven games. The Rams were 3-9 in the conference.

"We gambled against Randolph-Macon College and Roanoke to suffer our first defeats, and following those games nothing seemed to go right," said Coach Allen.

The Rams did manage to take third place in the North-South Holiday Season Seaford Fiesta at New Bedford, Mass. during Christmas vacation. The basketball team will be returning to the tournament, which begins December 26, again this year.

Picnic To Be Held By Alpha Sigma

A picnic will be given Sunday at Forest Hills Park at 4:30 p.m. It is sponsored by Alpha Sigma Sigma, the Social Science organization.

Food and refreshments will be furnished. Students desiring transportation to the park area should meet in Shafer Court at 3:30 p.m. The price for guests is \$.50.

Hatcher Leads Array Of Lettermen Wrestlers

The RPI wrestling team will make its 1964-65 debut as host to East Carolina College in mid-December, at a date to be designated.

The wrestling Rams, last year in their first season of competition, finished with 1-9 record.

"It was a rough season," said Coach Dave Magill, "but the team really progressed toward the end of the season."

The entire wrestling squad will return this season, with the exception of Ronnie Reynolds, who has graduated. Reynolds, along with Willie Hatcher, a parttime student from Richmond, had been the only members of the squad with any previous experience.

"The rest of the boys never even wrestling in high school," said Coach Magill.

Hatcher leads the array of returning lettermen. He compiled a 9-0 record last season in the 137-

lb. class.

Coach Magill stated that four or five freshman and transfer students will bolster the team. Practice will begin at the end of October.

Matches lined up so far include Newport News Apprentice School, Old Dominion College, Hampden-Sydney College, Washington and Lee University, Pembroke State College and William and Mary College.

Organ Purchased By Music Department

An organ—the first of its kind to be released outside of the Philadelphia area—with the latest in electronic devices has been purchased by the School of Music, according to Lawrence Robinson, assistant professor of organ.

The instrument was made by the Rodgers company of Philadelphia and has a wider range of pitch than any other instrument, Mr. Robinson said.

Mrs. Carolyn Payne, instructor of organ, will assist Mr. Robinson in teaching organ fundamentals.

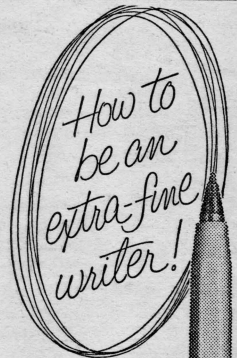
Book Store Has Large Stock

More than 19,000 books with 400 different titles were in stock at the Book Store at the beginning of the week, according to Mr. Emmanuel Van Horn, manager.

Mr. Van Horn said that sometimes as many as 50 students waited in line to enter the book store on Monday. He said he didn't think the book store would run out of books, but he explained that he would soon have to get in new orders.

Lambda Meets

Phi Beta Lambda, RPI business club, will hold its first meeting of the year at 5:45 p.m. Tuesday in Hibbs 303. Any student interested in joining is invited to attend the meeting.



GET THE NEW
BIC "FINE POINT"
—ONLY 25¢!

This is really fine writing. Until today, only a spider could spin such a fine line. Now BIC invents a new "Fine Point" pen that writes sharper, clearer, thinner lines.

BIC "Fine Point" with "Dynamite" Ball Point is guaranteed* to write first time every time because it's tooled of the hardest metal made by man.

BIC is the world's finest writing instrument: BIC never skips, BIC never clogs, BIC never smears. What a pair of pen pals: thin-writing BIC "Fine Point" with orange barrel, only 25¢; standard line BIC Medium Point "Crystal," just 19¢. Both available with blue, black, green or red ink. Made in the U.S.A. *For replacement send pen to:

WATERMAN-BIC PEN CORP.
MILFORD, CONN.



Members Sought

Alpha Delta Rho, the social organization of the School of Distribution, will hold a membership drive Monday, September 28 through Wednesday September 30, 9 a.m.-4 p.m.

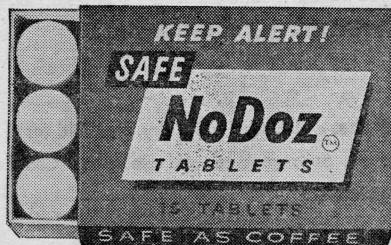
There will be a booth in the Rotunda to receive memberships.

Alpha Delta Rho is now sponsoring the Student Book Exchange, at 916 West Franklin. Proceeds from this project are used for one or more scholarship members of Alpha Delta Rho, Christmas aid for a needy family and a newsletter to be published monthly dealing with topics of interest to distribution students.

Art
Supplies

325 W. Broad St.

WELSH - ANDERSON



THE SAFE WAY to stay alert without harmful stimulants

NoDoz keeps you mentally alert with the same safe refresher found in coffee and tea. Yet NoDoz is faster, handier, more reliable. Absolutely not habit-forming.

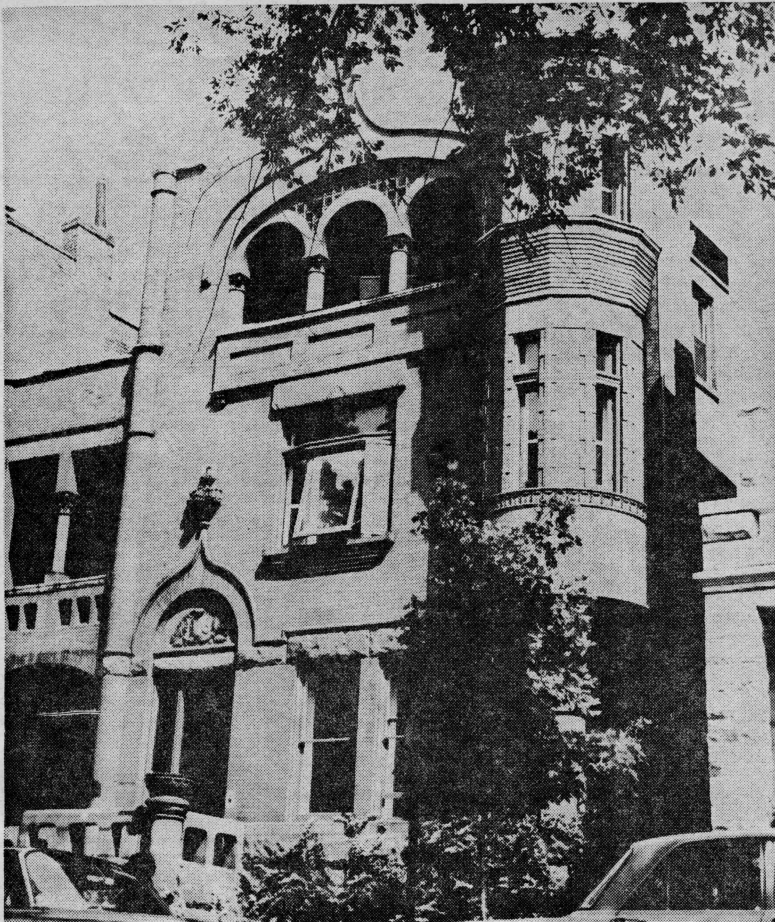
Next time monotony makes you feel drowsy while driving, working or studying, do as millions do... perk up with safe, effective NoDoz tablets.

Another fine product of Grove Laboratories.

Welcome Back R.P.I. Students



Dutch's "The Student Meeting Place" is open daily except TUESDAY from 6 a.m.-12 p.m.—Sunday from 7 a.m.-12 p.m. Student checks cashed (with proper identification).



Newest Major Acquisition Will Be RPI's First Student Activities Building Located at 916 West Franklin, Stone Structure Once Was Sumptuous Residence

Gormus Photo

IBM Registration Given Trial

Although RPI went IBM this year, students are not reduced to a mere "alphameric" number, Mrs. Sophia U. Hodges, acting registrar, assured the student body this week.

The electronic equipment from International Business Machine Co. was installed during the summer and was given its first real test here during registration last week.

"Although it was a new procedure, there was splendid co-operation among faculty and students which enabled a smooth flow of registration," Mrs. Hodges said. "There were no obviously long lines for extended periods of time," she added.

Refinements and adjustments will be made for next semester's registration period by using this semester as an example.

The equipment is a mechanical element to provide alphabetical class rosters and to enable rapid production of class roles and mid-semester and semester grade reports.

At registration, each student obtained a course card for each class in which he wished to enroll. The cards carried coded information on the course, department and student. Holes punched into the cards relayed the information through the electronic process. Numbers were used to identify each student.

A Data Processing Department in Ad. 9 contains six pieces of IBM equipment. The equipment includes machines to punch the cards, sort them, reproduce them and tabulate the information they contain.

Accuracy Need Cited

"The key to IBM procedure is accuracy," Mrs. Hodges stated. "The class schedule must be correct in every detail. The registration card which reflects schedule listings must be correct in every detail. Course cards must match registration cards in every detail. These details are department

designation, course number and section number," Mrs. Hodges explained. "The number of credits and whether the course is audit or credit is another point to be considered," the acting registrar added.

Mrs. Hodges and her assistants spent Saturday and Sunday "ironing out discrepancies" in the system.

"The advantages of a course card system are invaluable in controlling class size and in having the instructor know on the first day who is in his class," Mrs. Hodges said.

"We hope to force registration processes into standardized procedures, but will continue to consult with students personally in adjusting class problems."

Drop-Add Period

Next week marks the end of the two-week Drop-Add Period. This process is handled by the department heads and the Registrar's Office.

No student will be permitted to add a class after October 2, Mrs. Hodges said. A class dropped during the same period will not become a part of the student's permanent record. If a class is dropped during the period ending October 16, it is placed on permanent record and is given the notation "W" (withdrawn). Because the student dropped the class while in good standing, it would not count against him.

Classes dropped between October 19 and December 18 will be listed as "WP" or "WF" (withdrawn, passing and withdrawn, failing). A failure is recorded on a permanent record and counts against the student. Withdrawal while passing is not included in courses attempted. No class may be dropped after December 18.

"A student cannot use a withdrawal to escape a failure; it merely releases him from continuing to attend class," Mrs. Hodges

said.

"If a student signs for a course and does not attend class, he compels the instructor to give him a failure," she added.

Campus Adds Buildings; Expansion Is Planned

(Continued From Page 1)

RPI officials, including H. Hiter Harris, Jr., vice-rector of the board of visitors, and Dr. George J. Oliver, President, to forego any profit in renting the Mosque space to the school. The officials said RPI would pay all costs of maintenance and operation of space used.

Profit Cited

As it stands the city will make a 35-cent profit per square foot leased. Council is to consider the proposal.

Also added to the campus is a boys' dormitory at 906 Park ave. The three-story building houses 26 boys who will be transferred in February to 928 Park ave., presently a girls' dormitory.

Later, the Hibbs building is to be extended. It is to include a cafeteria and classrooms when this is begun, the Music building at 900 Park ave., the adjacent Lee House dormitory at 902 and 904 Park and the 906 dormitory will be demolished, according to Dean Roach.

Some Music classes will be transferred to 917 and 919 West Franklin.

Many classes and offices have moved to new locations. All Psychology and Sociology classes have moved to the Mosque. In the English department, the offices of the department head and several faculty members, with records, were moved from the third floor of the Administrative building to second-floor offices.

The School of Distribution moved from the second floor of the Administration building to 930 Park ave. which was previously used for the SGA office, the creative magazine office, and the book exchange. The former distribution school office was turned over to William Edwards, director of development.

Image Requests Contributions

Artistic or literary contributions to the Image, the school's journal of "creative ideas," are now being accepted by the Image staff.

Literary manuscripts for submission should be placed in the Image box in the lobby of the Administration Building and art work should be deposited with the switchboard operator.

The deadline for submissions to the fall issue is October 16, and the tentative publication date is December 7.

Since no literary materials submitted can be returned, it is requested that students keep a copy of their work.

Students interested in working on the magazine should leave their names in the Image mail box on the first floor of the Administration Building. They will be contacted by Ruth Meyer, managing editor of the publication.



A U.S. co-ed serves ice cream in Europe

PAYING JOBS IN EUROPE

Grand Duchy of Luxembourg, Sept. 9—Students are urged to apply early for summer jobs in Europe. Thousands of jobs (office, resort, factory, farm, etc.) are available. Wages range to \$400 monthly and the American Student Information Service awards travel grants to registered students. Those interested should send \$2 to Dept. T, ASIS, 22 Ave. de la Liberté, Luxembourg City, Grand Duchy of Luxembourg and request the ASIS 86-page booklet listing and describing every available job, and a travel grant and job application.

WELCOME RPI STUDENTS

Whether you are an entering Freshman or a returning Upper-Classman you'll find Meadow Laundry's one-stop cleaning services **FAST, CONVENIENT, and ECONOMICAL.**

9 lbs. of Laundry wash, dry, and fold for only **70c.** Deluxe Shirt Service . . . Suits pressed and cleaned. Complete cleaning service for all garments.

MEADOW LAUNDRY & CLEANERS

1001 W. GRACE STREET

Complete One Stop Laundry & Cleaning Service