



VCU

Virginia Commonwealth University
VCU Scholars Compass

Theses and Dissertations

Graduate School

2024

Reflection: Cultivating Creativity and Healing Through Art Therapy

Caroline Ciccone
Virginia Commonwealth University

Follow this and additional works at: <https://scholarscompass.vcu.edu/etd>

© The Author

Downloaded from

<https://scholarscompass.vcu.edu/etd/7719>

This Thesis is brought to you for free and open access by the Graduate School at VCU Scholars Compass. It has been accepted for inclusion in Theses and Dissertations by an authorized administrator of VCU Scholars Compass. For more information, please contact libcompass@vcu.edu.



REFLECTION

CAROLINE CICCONE
MFA 2024

CULTIVATING CREATIVITY + HEALING
ART THERAPY FOR ELEMENTARY-AGED CHILDREN
CAROLINE CICCONE
MFA IN INTERIOR ENVIRONMENTS
2024

TABLE OF CONTENTS

01 PHILOSOPHY

- 2 DECLARATION
- 4 DESIGN ETHOS
- 6 WHY ART THERAPY?

02 RESEARCH

- 10 ABSTRACT
- 12 RESEARCH WRITING
- 18 PRECEDENTS
- 24 NEIGHBORHOOD + BUILDING HISTORIES
- 26 SUN + SITE STUDIES
- 28 PHOTOGRAPHIC STUDIES

03 CONCEPT

- 32 CONCEPT STATEMENT
- 34 CONCEPT DEVELOPMENT

04 SCHEMATIC DESIGN

- 40 BUILDING CODE
- 42 PROGRAM + SPACE REQUIREMENTS
- 44 BUBBLE DIAGRAM
- 45 ADJACENCY MATRIX
- 46 SPACE PLANNING
- 47 PARTI DIAGRAM
- 48 DESIGN PROCESS

05 DESIGN SOLUTION

- 52 FURNITURE PLANS
- 54 BUILDING SECTIONS
- 56 PERSPECTIVES
- 64 DETAILS

06 SPECIFICATIONS

- 76 FURNITURE
- 80 FIXTURES
- 82 EQUIPMENT
- 84 FINISHES

07 RESOURCES

- 94 BIBLIOGRAPHY
- 97 IMAGE SOURCES
- 98 FINAL DELIVERABLES
- 100 ACKNOWLEDGMENTS

SECTION 01

PHILOSOPHY

DECLARATION

My design ethos as an interior designer is rooted in inclusivity, empathy, nature, sustainability, and authenticity. **Inclusivity** drives me to create spaces that prioritize the needs and experiences of the humans who will inhabit them. I believe in using human-centered and universal design principles to ensure that every user feels welcomed and valued.

Empathy is at the core of my design process, as I strive to understand users' perspectives through conceptual storytelling and create meaningful connections within spaces. **Nature** is also an inspirational driver. I strive to integrate natural elements thoughtfully to harmonize with the environment and enhance user well-being.

Sustainability is also paramount, guiding me to practice reuse, reclamation, and recycling in all aspects of design to minimize negative environmental impacts. I prioritize **authenticity**, choosing not to imitate others and instead focusing on genuine, honest design choices that reflect the unique character of each space and its inhabitants.



Water Reflection by Pamela Gilliland, 2017

DESIGN ETHOS

Inclusivity

Human-centered design and universal design are two main ideals that are particularly important to me, as it is important to create spaces with the users at the forefront of the thought process. If spaces are not welcoming and open to the users that are occupying them, it is our goal as designers to make them inviting.

Empathy

Designing with empathy involves understanding the world from the user's perspective. As designers we can guide the user on a journey. It is crucial for fostering user engagement and bringing light to important moments to guide the user on a journey throughout the space.

Nature + Design

Designing with a careful regard to ecology and natural character of the landscape is a priority. Incorporating natural elements and designing sustainably is a key way to better serve the people and the earth.

Reuse - Reclaim - Recycle

It is critical to practice sustainable methods when designing. The design industry contributes to large volumes of waste, so when possible, using recycled materials, thrifting FF+E, and adaptive reuse of buildings are great ways to reduce our environmental footprint.

Authenticity

In an industry where so many ideas are considered each day, it can sometimes be hard to remain authentic and not take after others' ideas. Authenticity prioritizes thoughtful and honest design choices that reflect the true character and personality of the space and its inhabitants.



Infinite Mirror, Portland, Andrea B. Stone

WHY ART THERAPY?

This project is centered around the design of an art therapy center for children who may not receive the necessary resources at their schools. Art therapy is a form of **psychotherapy** involving the encouragement of free **self-expression** through painting, drawing, or modeling, used as an aid.

Art therapy is an effective method to deal with mental disorders, family/personal conflicts, and enable clients to experience their own difficulties, conflicts, and fears in a less painful way, and it can be especially **impactful in urban settings**.

Over the summer in 2018, I had the opportunity to go work in Jamaica at an orphanage with children who have a wide range of disabilities. Some of these children were mute or unable to communicate with us, but **art was a form of communication** that brought us all together. This experience is what first introduced me to the **healing** powers of art.

Within the Richmond City Public Schools, 31.7% of students are economically challenged and 13.1% of students are disabled. Giving more **resources** to students who may need them outside of their school environments is the goal for this project. Art can be a form of communication as well as a way to help understand others better.



personal photo from trip to Jamaica

SECTION
02

RESEARCH

ABSTRACT

Relevance

I was first introduced to the healing powers of art after working in an orphanage in Jamaica with children who had a wide range of disabilities. Some children were mute or unable to communicate, but art was a form of communication that brought us all together. Within the City of Richmond public school system, 31.7% of students are economically challenged and 13.1% of students are disabled (Education, 2022). Giving more resources in the arts and mental health support to students outside of their school environments is the goal. Art therapy helps reduce the dropout rate and improve mental health (10 arts education fast facts, 2020). Art can be a form of communication and a way to help understand others better, and many countries are now adapting art therapy practices to better serve their communities (International, 2018).

Issue/Problem

When conducting research, there was a lack of information on art therapy centers around the globe that are carefully crafted to best support their practices. How can designers create environments to help support art therapy practices and the mental health and well-being of children?

Context

Art therapy is an effective method to deal with mental disorders, family/personal conflicts, and enables clients to experience their difficulties, conflicts, and fears in a less painful way. It is especially impactful in urban settings (Kay, 2020). The CLEAR model, (Culture, Learning, Equitable, Achievement and Responsive) a trauma informed approach to art therapy, focuses on physical safety, emotional safety, predictability, and consistency which are key elements when designing a space to conduct therapy in (Kay, 2020). Kay furthers her research, touching on the good design strategies which can be included in trauma informed spaces, such as creating a space that is psychologically and emotionally safe and private for clients with proper sound insulation, making children feel empowered and make their own decisions, promote well-being in a physical and mental capacity, include private spaces for both clients and art therapists to get away from tense environments, clear and concise messaging for easy wayfinding, and being considerate of light, color, and sound.

Methods

In order to learn more about the client, program, and industry, interviews with licensed art therapists and visits to current facilities such as Healing Sounds, LLC will occur. This will help with learning more about what is currently working or not working in the facilities. The president of the Virginia Art Therapy Association is also supporting the research with program development and design strategies for this project. Relevant books and articles about current methods and programs, such as, "Development of a Creative Arts Therapies Center for People With Developmental Disabilities" and "The Introductory Guide to Art Therapy", and precedent studies of adjacent facilities such as therapy clinics, art education facilities, music therapy clinics, and sensory spaces will also be observed. These will guide the design and help better understand how certain design principles and sensory elements can either be positive or negative experiences for developing children.

Outcomes

Different environments support positive experiences for children who suffer from trauma or mental health crises. Students who attend underfunded schools are not receiving the same care and resources as those in more economically flourishing areas. Research suggests, by creating an environment where these students can receive therapy resources, their mental and physical health will improve.

Engagement

Creating an art therapy center in a neighborhood that needs mental health services as well as art therapy programs for developmentally challenged children is the goal for this project to help support the betterment of the community. Providing art therapy services outside of the normal class curriculum can help stimulate young minds and help the mental health and well-being of developing children.

RESEARCH WRITING

I. Introduction

According to McDonald, **“Children who engage with art therapy are viewed as happier, more settled, calmer, having fewer behavioral outbursts, more confident, and engaging better with schoolwork”** (McDonald, 2022). Art therapy is a powerful form of psychotherapy that harnesses the expressive potential of artistic mediums to promote mental health and well-being. This form of therapy empowers individuals to communicate and process their emotions and experiences in a safe and creative environment. This approach has proven to be particularly effective in addressing a wide range of mental disorders and provide valuable tools to navigate complex family and personal conflicts, enabling clients to confront and understand their own difficulties, conflicts, and fears in a manner that is less distressing.

Art therapy is a valuable resource, especially in urban settings. In environments such as Richmond, Virginia, diverse challenges can be present and the need for these therapeutic interventions becomes more necessary. The local public school system in Richmond faces socioeconomic disparities, with 31.7% of students facing economic challenges, and 13.1% of students living with disabilities. Recognizing the significance of offering more comprehensive support to these students beyond the limitations of their school environments is an important element in bettering the mental health and wellbeing of the children in our community. The primary objective of this project is to outline the value of art therapy, the requirements that it entails, as well as how this can benefit the interior designers as they design these types of spaces. There is a significant lack of precedent studies that address the impact of

designing spaces of this nature. The scarcity of comprehensive research impedes the understanding of how these types of spaces can be influenced, shaped, and ultimately optimized through interior design strategies. This absence of precedents emphasizes the need for further investigation and exploration to reveal the correlations between design strategies and art therapy practices.



II. Students who practice art therapy perform better in school and are less likely to drop out.

Students who engage in the practice of art therapy not only excel academically but also exhibit a reduced likelihood of dropping out of school. Students who are considered “at risk” oftentimes face academic challenges and may not perform as well in school. The term, “at risk” refers to students who do not perform well in typical educational settings, making them more susceptible to failure. These students may also be those who live in poverty, students who are placed in special

education, or those who have experienced trauma. In *Therapeutic Approaches in Art Education*, Kay states, **“The more time I spent in urban schools, the more troubled I became about the impact of trauma on students”** (Kay, 2020). This study focuses on students who are a part of “at risk” populations within Kay’s school district. Kay continues on by discussing the well-being of urban students who have experienced trauma. These students may seem disconnected from what is happening around them and what they are feeling. Their psychological and behavioral reactions to trauma are also dependent on their developmental levels and age. These children may present different responses to traumatic situations and each may benefit in a different manner from art therapy practices. Art therapy may also be beneficial for students who feel the pressure to achieve, need to fit in, feel stress of social media, or lack of safety in school (Kay, 2020). Students can find peace and self-expression through art therapy, offering a therapeutic outlet to navigate the complex pressures and stresses they encounter in the everyday educational environment.

The critical theoretical model emphasizes the role of research and defines art as a method for identifying and communicating problems with current social situations, values, and norms (Benic, 2016). In “Findings of Visual Arts Research in Early Childhood and Primary Education,” Benic introduces the case studies of Cuthbertson and Rolling schools which exhibited their findings in a quantitative manner. In 2007, a comprehensive case study was conducted at Cuthbertson located in Phoenix, AZ. The results of this study were that teamwork, creativity, and working with new media improved among the students who were

involved in the study. In 2008 in Rolling, NYC, another comprehensive study was conducted, the outcomes of which were that visual arts helped students develop their identity and communication skills (Benic, 2016). Both of these studies were able to conclude that the



arts have a strong impact on the student’s cognitive development and emotional well-being. Harpazi, et al, state that, there is a strong association between a student’s emotional state and academic achievements (Harpazi, Reger, Snir, Raubach-Kapsy, 2020). The school climate and environment are also known factors to impact the emergence of emotional, personal, and behavioral problems. With an improved classroom behavior there is a reduction in resistance and anxiety among children. “Children who engage with art therapy are viewed as happier, more settled, calmer, having fewer behavioral outbursts, more confident, and engaging better with schoolwork” (McDonald, 2022).



materials symbolically in order to represent, communicate, or express thoughts, feelings, and experiences is a matter of crucial importance in both psychoanalysis and art therapy," Edwards writes, (2004). The main goal of art therapy is to create images and objects with the explicit aim of exploring and sharing the means for them (Edwards, 2004). In Edward's research, the use of metaphor and the process of symbol formation played an important role in their practice. In this example, Edward talked about his experience working with clients. Edward explains that lines may be 'nervous' or 'agitated,' a shape is 'bold,' color can be 'shocking.' The use of metaphors connects individuals to universal themes (Gussak & Rosal, 2016). This can also make the work stand for something beyond itself, and they acquire their meaning based on the context where they are created and promote the exploration of the ambiguity of the meaning behind them.

Art therapy can have a variety of different meanings (Gussak & Rosal, 2016). No two clients are the same, nor can they be treated with the same methodology. Each individual has their own unique circumstances that have led them to the art therapy practice in which they hope to cope and work through. The creative process needs not be judged and art therapists are trained to meet people where they are while creating a personal narrative for each client. The displacement into art allows emotional safety to process difficult content. Problem-solving through art supports mastery and cognitive development while allowing for non-verbal expression when words may otherwise fail.

IV. The interior environment shapes and influences human behavior

The interior environment shapes and influences human behavior, and it can be especially



impactful in therapy settings. The design of the therapy room influences the patient's comfort level and participation (Norouzi & Garza, 2021). In, "Architecture for Children With Autism Spectrum Disorder and Their Therapists," the authors introduce the environmental behavior theory, which is a conceptual model recognizing the impact of the environment on a person's behavior. Ensuring that the environment is attuned to the requirements and preferences of the individuals is of the utmost importance. In particular, the sensory environment is a substantial and influential factor in this regard. It significantly contributes to the overall well-being of the user and their experience within the space. The careful and thought out design of the sensory environment, paying particular attention to lighting, acoustics, textures, and colors, invites the potential to create a more harmonious environment that meets the diverse needs and sensitivities of the clients. This in turn also influences the inclusivity and accessibility of the space for the users.

In Studio art therapy: Cultivating the artist identity in the art therapist, Moon talks about the challenge of creating art therapy environments that are responsive to the needs

of the clients that we serve (Moon, 2002). **"A sense of "place" is created not only of the physical space and material resources but also of our ability to make use of chance and circumstances as necessary environmental ingredients"** (Moon, 2002).

As designers, it is fundamental to consider the work environment as a work of art. In this instance in particular, the architecture and the art being made within the space go hand-in-hand. Moon also talks about the emphasis on the relationship to the surroundings, most importantly the connection to history, the neighborhood, and surrounding social issues. Within the local context of Richmond, the city has a strong tie to many significant historical and social issues that have unfolded over the course of time. Tying in these notable events into the art therapy practices, may benefit children in the local environment to cope with thoughts and feelings they may not be able to otherwise express through words. Hence why the chosen site for this project holds great potential for a profound impact on the community, being located close to the Virginia Museum of Fine Arts, Monument Avenue, and the unique makeup of the historic Carytown neighborhood. Moon also stresses the importance to consider and articulate the intention of the space. As designers, in order to evoke a sense of welcome and make individuals experience a space as "for" them, we can create accessible and inviting spaces for all. These spaces may be seen as "safe spaces" for clients, or use intentional materials in order to create a calming environment. "Safe spaces" may include spaces that feel more welcoming, have a lower lighting level, or have substantial acoustic qualities that reduce the noise levels within them. A successful art therapy space is one that invites art making and is physically and emotionally safe. In order to do so, Moon suggests creating easy, unobstructed pathways, using non-toxic materials, and considering the placement and

III. The therapeutic approach of art therapy promotes self-expression and emotional healing. It can be both a remedial tool and a diagnostic aid.

The therapeutic approach of art therapy promotes self-expression and facilitates emotional healing that serves the dual purpose of both a remedial tool and a diagnostic aid. This multifaceted approach encourages individuals to articulate and explore their inner emotions through creative expression and provides valuable insights to the emotional and mental well-being of the patients. The implementation of this approach can be executed through a variety of create mediums, such as painting, drawing, and sculpting, thereby providing individuals with a wide range of options for self expression. However, these materials are not limited to fine art materials. When speaking with local licensed professionals, they stated that clients enjoy using recycled materials or using whatever they can find within the space to express themselves. Some professionals prefer to perform their therapeutic practice outside using primarily natural materials in a practice called, "eco art therapy." "The means by which an individual is able to use objects and

accessibility of art materials. Making a space emotionally safe can be evoked by the quality and character of the space. By providing users safe spaces where they can step away from the tense environment, or connect them with the natural environment, clients are more likely to feel safe within the space. These spaces are also most successful when they demonstrate adaptability and flexibility tailored to the unique needs and preferences of each client. Using folding screens, modular furniture, cabinets and storage on wheels, floor pillows, or draped fabric are all good design features to consider.

The primary objectives for the space revolve around the prioritization and optimization of safety and security. This can be achieved by implementing doors which require access codes and sound machines when necessary. This maximizes awareness and orientation, supports functional abilities and foster creativity, supports the provision of privacy and opportunities for personal control, and regulates stimulation. It is also important to consider the sensory environment including colors, textures, patterns, lights, shapes, spatial qualities. Sensory awareness is information communicated through the central nervous system (Kay, 2020). This is especially important when designing this space for children. Color and cognitive development go hand-in-hand (Sullivan, 2011). According to Sullivan's research, blue promotes relaxation, children ages 1-2 benefit from the color orange (psychometer stimulator), children ages 2-3 benefit from green (evoke nature). However, this does not always hold true among different cultures and countries, it is essential to look at the research based on the geographic location in which the art therapy space is situated. Although, the use of color is always impactful no matter where the building is located. The research discussed in, "Design strategies for enhancing cooperative behavior in children in



Daycare Facilities" stated that using soothing, faded hues in companion with bright hues is the best choice for encouraging cooperative behavior, as well as the use of vivid values with light values (Abbasi, Pearson, Gaines, 2020). Norouzi, & Garza also cover the usage of color in an architectural viewpoint. When considering the best type of room for different therapeutic practices, there are three methods they touch on: min stimuli, mod stimuli, and max stimuli. Min stimuli suggests the usage of 2 or less colors on the walls, 2-3 pieces of furniture, no windows, and no competing sounds. Mod stimuli suggests 3-4 colors on the walls, 4-6 pieces of furniture, one window, and external sounds allowed within conversation level. Lastly, max stimuli suggests 5 or more colors, 7 or more pieces of furniture, 2 windows, and external sounds allowed above conversation level or conducting therapeutic practices with the door open. Based on other research methods and interactions with licensed professionals, the appropriate room layout suggestion would be min stimuli, with the exception of adding additional access to more natural lighting methods.

Key design elements may include, but are not limited to, access to views and nature, barrier-

free environments, and easily modifiable room layouts. Light and sound are also two key factors when designing a successful art therapy space. Abbasi, Pearson, and Gaines suggest using lighting to create interpersonal relationships and aesthetics. Reduction in brightness creates a calmer environment and promotes children to be more involved in activities. Alana Chandler, MS, LPC, ATR, at Glacier Health and Development Center advised that they rarely ever use overhead lighting within their facility. She stated that they mainly use warmer toned lighting in the form of table lamps in order to make their clients feel calmer and safer within the space. Learning can be difficult in full spectrum fluorescent lighting, and classes with no windows created disturbances in cortisol levels, circadian rhythms, and concentration (Abbasi, Pearson, Gaines, 2020). Balancing the natural light with task lighting is important when it comes to designing art spaces. On the other hand, noise control is another large factor in the design of art therapy spaces. Soundproofing is one of the most pivotal elements with the space to instill confidentiality as well as manage the noise between a different age range of clients (Hayes, 2023). When interviewing Alyssa Hayes, MS, LPC, ATR-BC, Clinical Director of Healing



Sounds, LLC and President of the VA Art Therapy Association, she stated, "adult clients who are receiving therapy treatment don't want to hear the screaming child next door." This is also an important consideration to get the most out of each therapy session and maximize the confidentiality of the spaces. At Glacier Health and Development Center, they implemented the use of noise machines positioned outside each therapy room to effectively manage ambient noise levels and optimize the privacy within these high-intensity environments. The importance of the interior environment on the client's comfort level, participation, and overall experience is one of the key factors when designing the space.

V. Conclusion

It is evident that art therapy is a highly effective therapeutic practice for enhancing the mental health and overall well-being of individuals. The use of artistic mediums allows clients to navigate and confront their personal difficulties, conflicts, and fears in a manner that is notably less painful, making it a particularly valuable approach in urban settings. The primary aim of designing and implementing an art therapy center in the urban setting of Richmond, Virginia is to propose the suggested actions to design a nurturing and conducive space for young children, that empowers self-expression and emotional healing. The benefits may be but are not limited to lowering the dropout rates among young children, which in turn improves their overall educational experience. Simultaneously, the presence of an art therapy center outside the school environment is known to play a pivotal role in addressing the mental health needs of children, thus enhancing their overall quality of life.

PRECEDENT 01

A Warm Clinic

Designer: RIGI Design

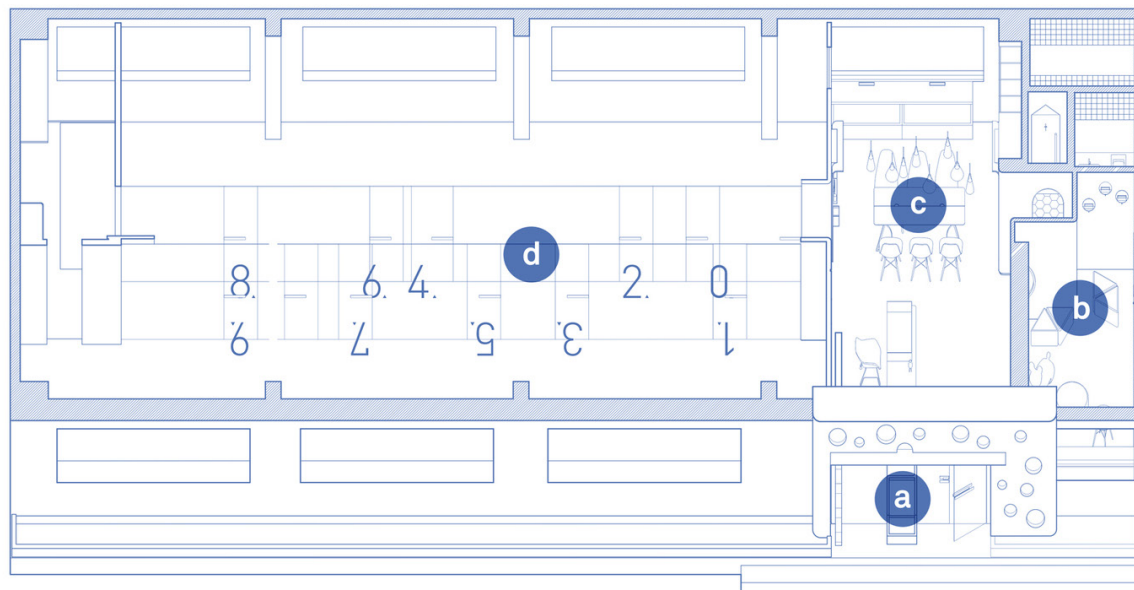
Location: Tianjin, China

Year Built: 2016

The clinic's interior design incorporates natural materials, warm colors, and ample natural light to create a soothing environment for patients. The design firm's approach to the clinic's layout focuses on maximizing functionality and efficiency while maintaining a sense of comfort for the children they are designing for. The reception area is highlighted as a key space, featuring a combination of wood and soft lighting to promote a calming ambiance. The article underscores the importance of thoughtful design in healthcare spaces, especially those intended for children, while emphasizing creating environments that contribute positively to patients' well-being.

In addition to the physical design elements, the article exhibits the use of artwork, color, and greenery within the clinic, contributing to a holistic healing environment. The integration of these elements aims to reduce the clinical feel often associated with medical facilities, fostering a sense of tranquility for both young patients and the staff. Overall, the reason I chose to highlight this article is due to the successful execution of a warm and inviting clinic, showcasing how thoughtful design choices can positively impact the medical care experience of children.

- a ENTRANCE
- b KIDS AREA
- c WAITING AREA
- d CLINIC
- 1-9 OFFICES



Furniture Plan



PRECEDENT 02

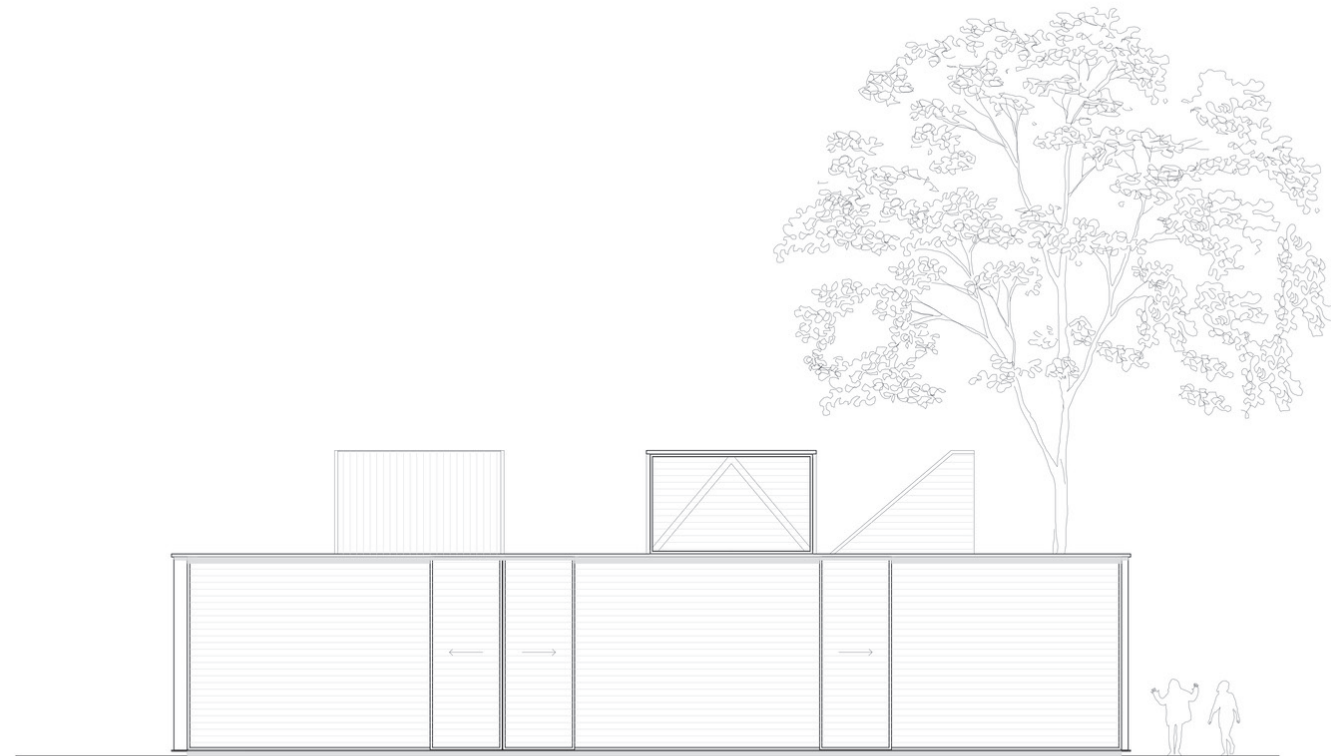
Pinheiros Club School

Designer: Firma Arquitetura / Oficina Aberta

Location: São Paulo, Brazil

Year Built: 2017

The annex, is an extension of an existing kindergarten for extracurricular activities in São Paulo, Brazil, which presents a unique design approach that integrates interior and exterior spaces. The project centers around three "activity gardens," which aim to enhance free spaces while reorganizing access points. The annex creates subtle boundaries between the gardens, fostering a connection between the indoors and outdoors through large sliding doors. The use of steel frames allows for fast, cost-effective, and environmentally conscious construction, respecting the local landscape and minimizing waste. The emphasis on modular dimensions and industrialized materials contributes to easy transport, manual assembly, and recyclability.



Exterior elevation of annex



Relationship between annexes and main building



View inside annexes



View inside annexes

PRECEDENT 03

Caboolture GP Super Clinic

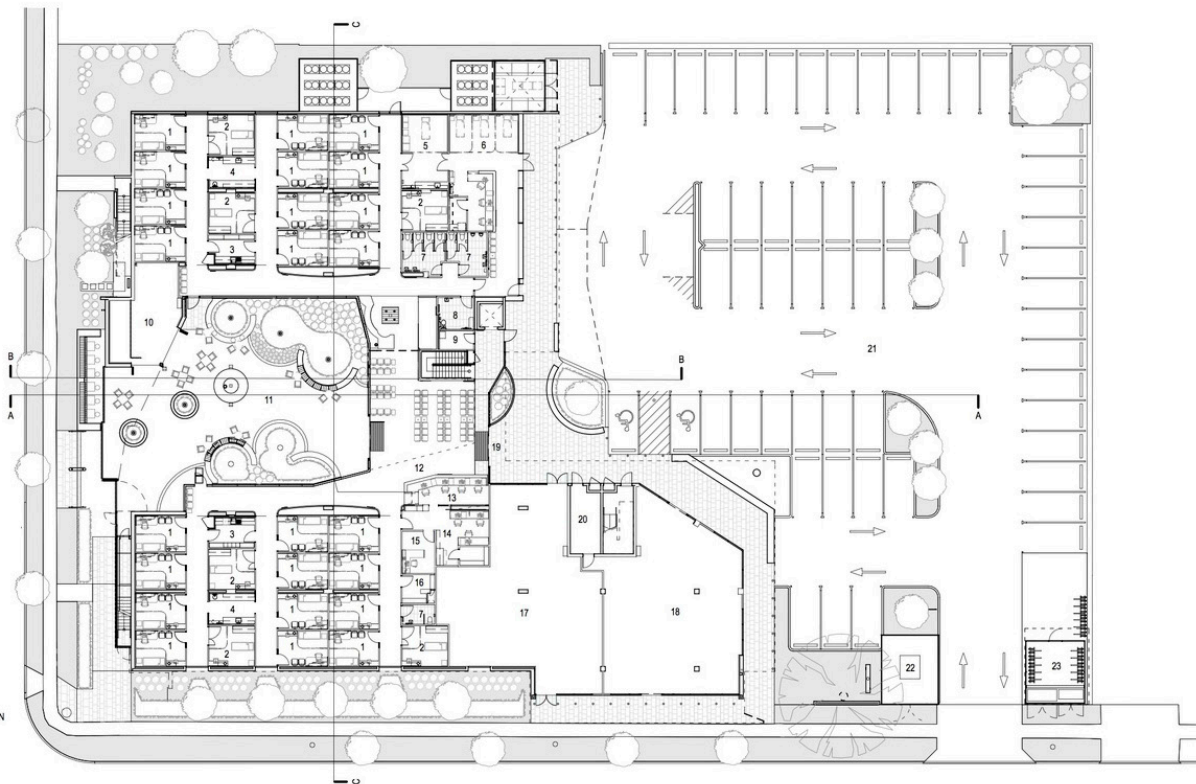
Designer: Wilson Architects

Location: Caboolture, Australia

Year Built: 2015

This new Super Clinic in Australia defies conventional clinic aesthetics. The design focuses on fostering a healing environment through innovative features such as vertical gardens, fish ponds, and an atrium. These elements contribute to a sense of respite and tranquility, deviating from the typical institutional atmosphere associated with healthcare spaces.

The connection to the community and nature is a crucial aspect of the design, with the clinic being perceived as a community-oriented space, fostering a sense of ownership and integration among the locals. The Caboolture GP Super Clinic, operating under the Super Clinics Health Care (SCHC) as part of the Federal Government's GP Superclinic Program, exemplifies a holistic and patient-centric approach to healthcare architecture.



Ground Level Plan 0 1 2 3 4 5 10m



Main area kids cubbies



Main area kids cubbies



Cafeteria with live plants

NEIGHBORHOOD + BUILDING HISTORIES

Neighborhood

Carytown was first established in 1938 with the construction of Cary Court shopping center, Richmond's first strip mall. It began as 9 blocks on W. Cary Street but has multiplied greatly since then. Some major characteristics of Carytown include events and festivals that are held throughout the year such as the Watermelon Festival, an annual end-of-summer event that has been held for over 30 years, the French Film Festival at the Byrd Theatre, and the Carytown Farmers Market, every Sunday. Carytown also has an eclectic character to it with 230+ shops, restaurants, and boutiques with colorful building facades and murals.

Landmarks include the Byrd Theatre, built in 1928 as one of the Nation's Grand Movie Palaces. Named after William Byrd II, one of the founders of Richmond, this Italian Renaissance Revival style was added to the National Register of Historic Places in the 1970s. Another landmark in the neighborhood is Richmond's first strip mall, Cary Court Shopping. Built in 1938, this strip mall helped found the area of Carytown.

Edges of Carytown include W Cary Street and Main Street, Arthur Ashe Boulevard, Byrd Park, and Interstate 195. The major pathway in and out of the neighborhood is W Cary Street, which only runs in one direction. Nodes of Carytown are Byrd Park, including Fountain Lake, Boat Lake, Tennis Courts, as well as the intersection where Carytown ends and 195 cuts through that portion of the city.



Carytown Court - 1955



Historic Byrd Theater

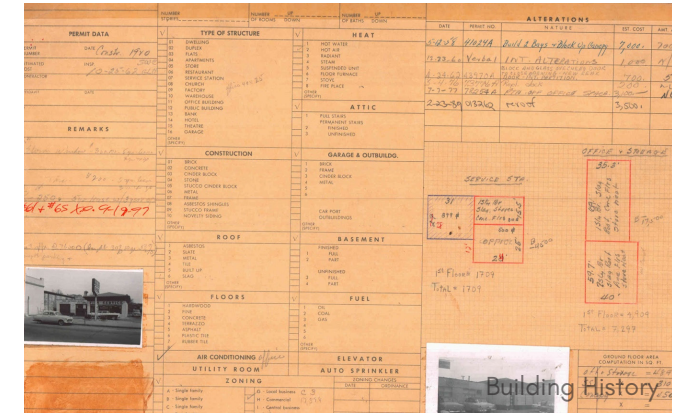


Present day Carytown

Building

2810 W Cary Street was originally constructed for the Richmond Window Corporation. Their company occupied the building and ran their business at this location until 2016, when Area 10 Church purchased it. Under new ownership, the building was under renovation and major changes were made including a second-story mezzanine addition. The original character of the building remained intact, and today the large wood trusses are exposed and serve as the main focal point. The primary materials of the building include painted brick, wood trusses, and glass.

The small annex building on the left side of the site used to be a gas station, and many large vehicles would occupy the lot. There are garage doors on the back side of the building, which is where the trucks would load and unload their materials. This is also why there is a change in elevation among the longitudinal section of the building. Some important architectural features include a pediment on the facade, large glass windows, wooden trusses, gable roof, and brick details.



Building History



During renovation



Original Building Facade for Richmond Window Corp.

SUN + SITE STUDIES

Key

- Direction of traffic
- Major surrounding roadways
- Adjacent buildings
- Site
- Sun path
- Surrounding green space

Site Observations:

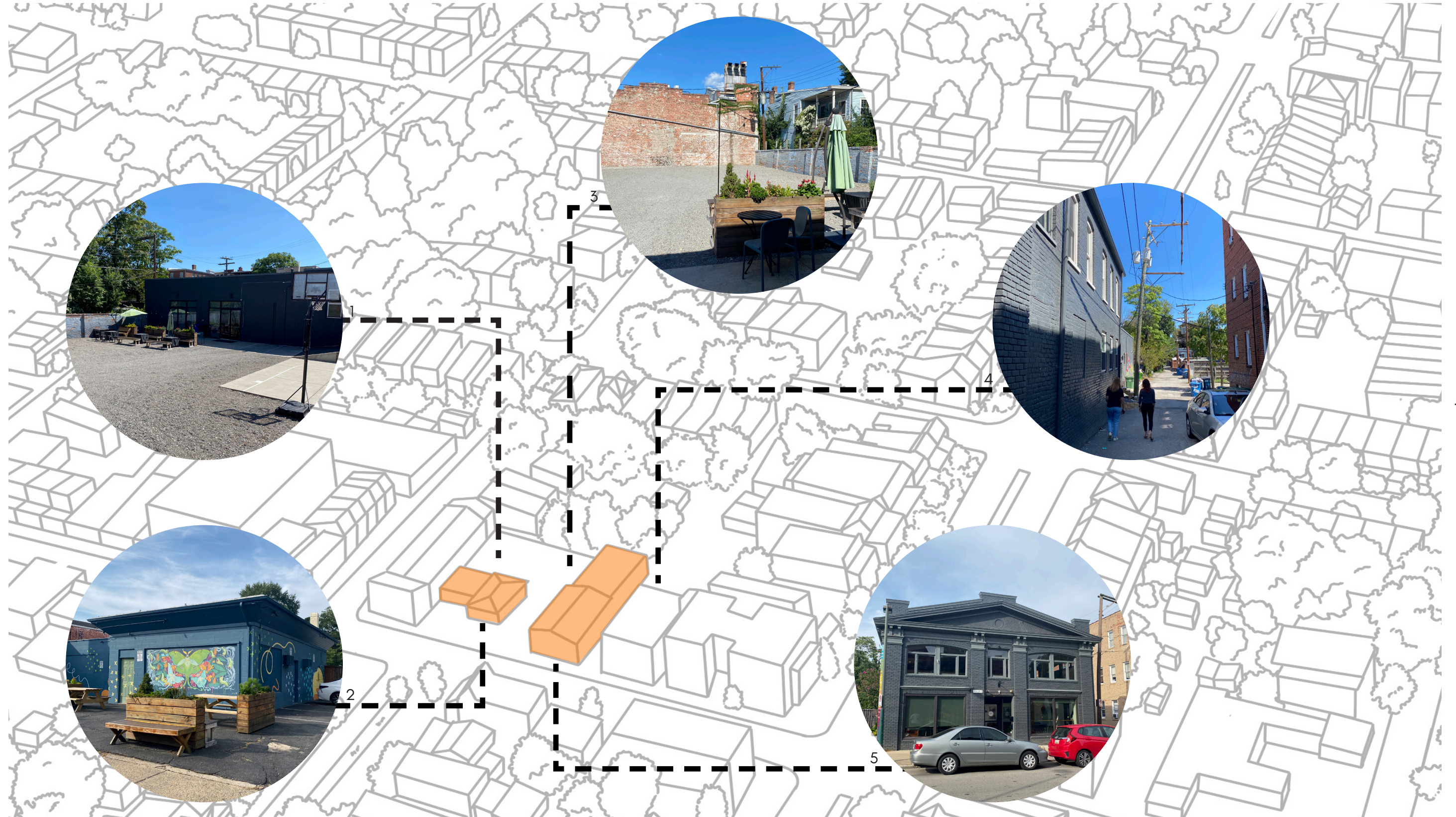
- The sun rises directly down W Cary St in the mornings, causing direct sun glare from the east
- W Cary Street is a one way street heading west to east, and W Main St runs parallel from east to west in the opposite direction
- W Cary Street is full of retail, restaurants, and entertainment whereas neighboring streets are primarily residential
- Museums and historic landmarks, such as the Virginia Museum of Fine Arts (VMFA), Virginia Museum of History and Culture (VMHC), and the Byrd Theater surround the neighborhood



PHOTOGRAPHIC SITE STUDIES

1, 3 courtyard
2 front of annex

4 adjacent alley
5 front facade



SECTION 03

CONCEPT

CONCEPT STATEMENT

Reflection, a pivotal aspect of the therapeutic journey. Patients explore their experiences and emotions to gain insight and healing. The building's history as a window factory serves as a **metaphorical backdrop**, symbolizing the opportunity for patients to **look inward** and contemplate their personal narratives. This concept seeks to honor the journey of **self discovery** and **healing**, empowering children to navigate their emotions through art.

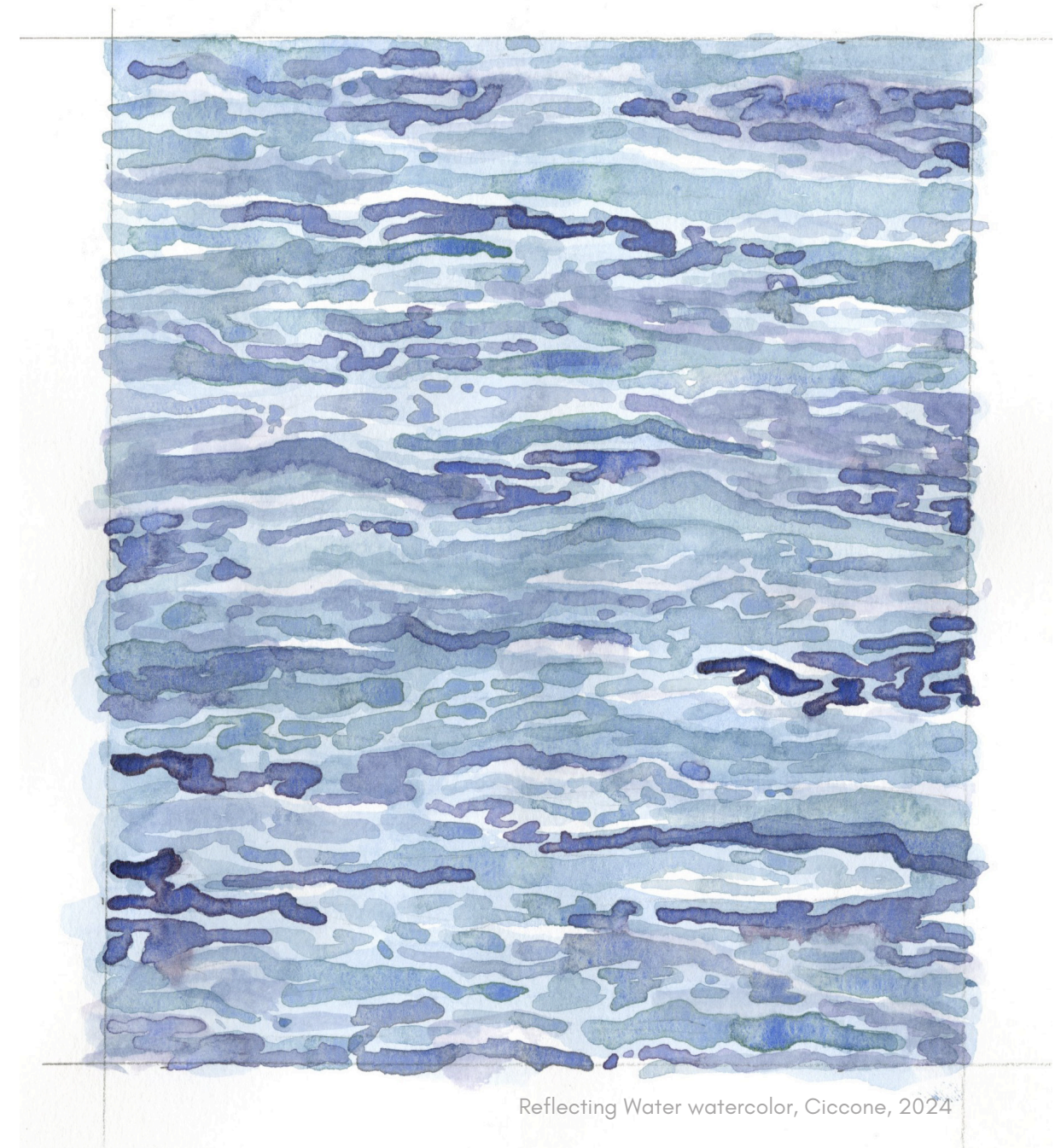
Reflection

*I look up and I see
Reflections of my life and how they have impacted me
Paths I've traveled, rough and smooth,
The lessons that I have learned and what I have to lose.*

*Therapy's gentle guiding hand,
Helps me understand,
How each reflection of me is bright
Guiding me through the dark night.*

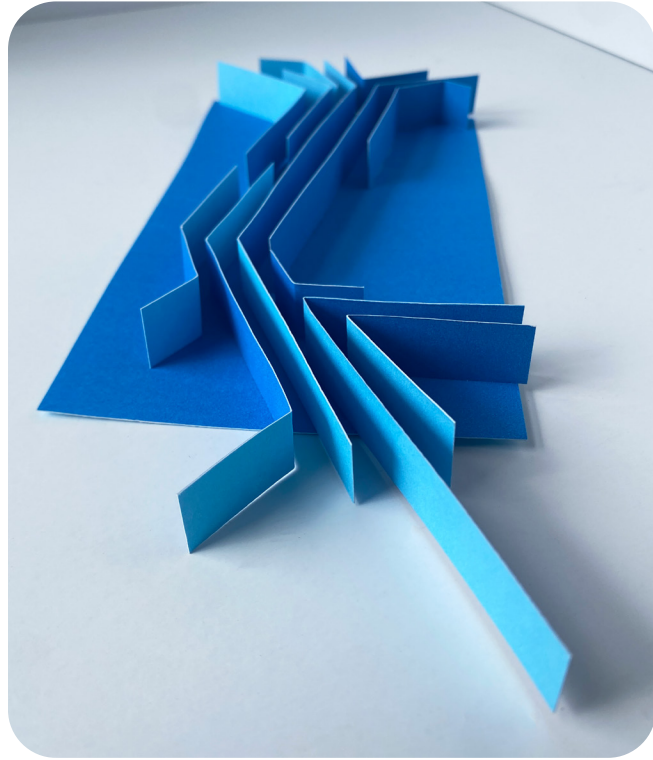
*Through introspection's tender art,
Helping me find the strength to mend my mind and heart,
To face the future, bold and strong,
With this newfound wisdom I have to right the wrong.*

- Ciccone, 2024

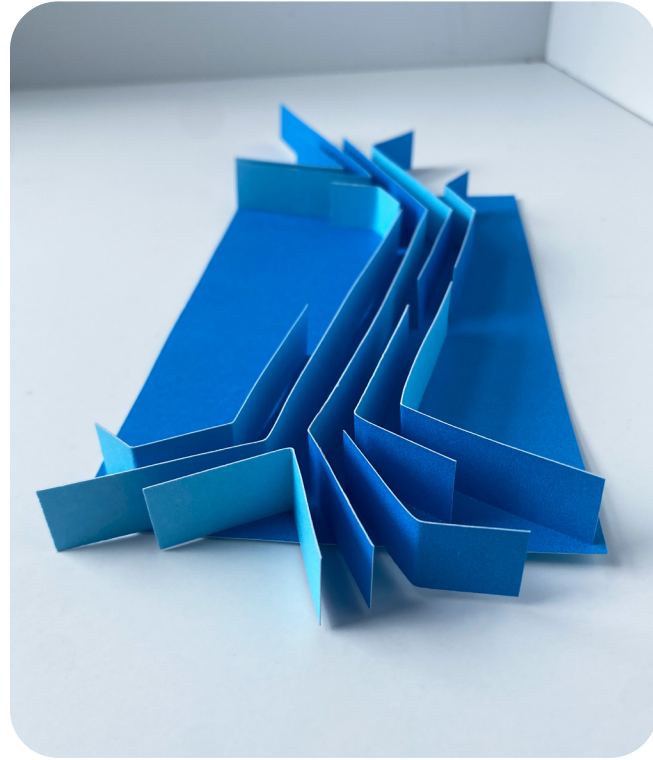


Reflecting Water watercolor, Ciccone, 2024

CONCEPT DEVELOPMENT



reflection concept model



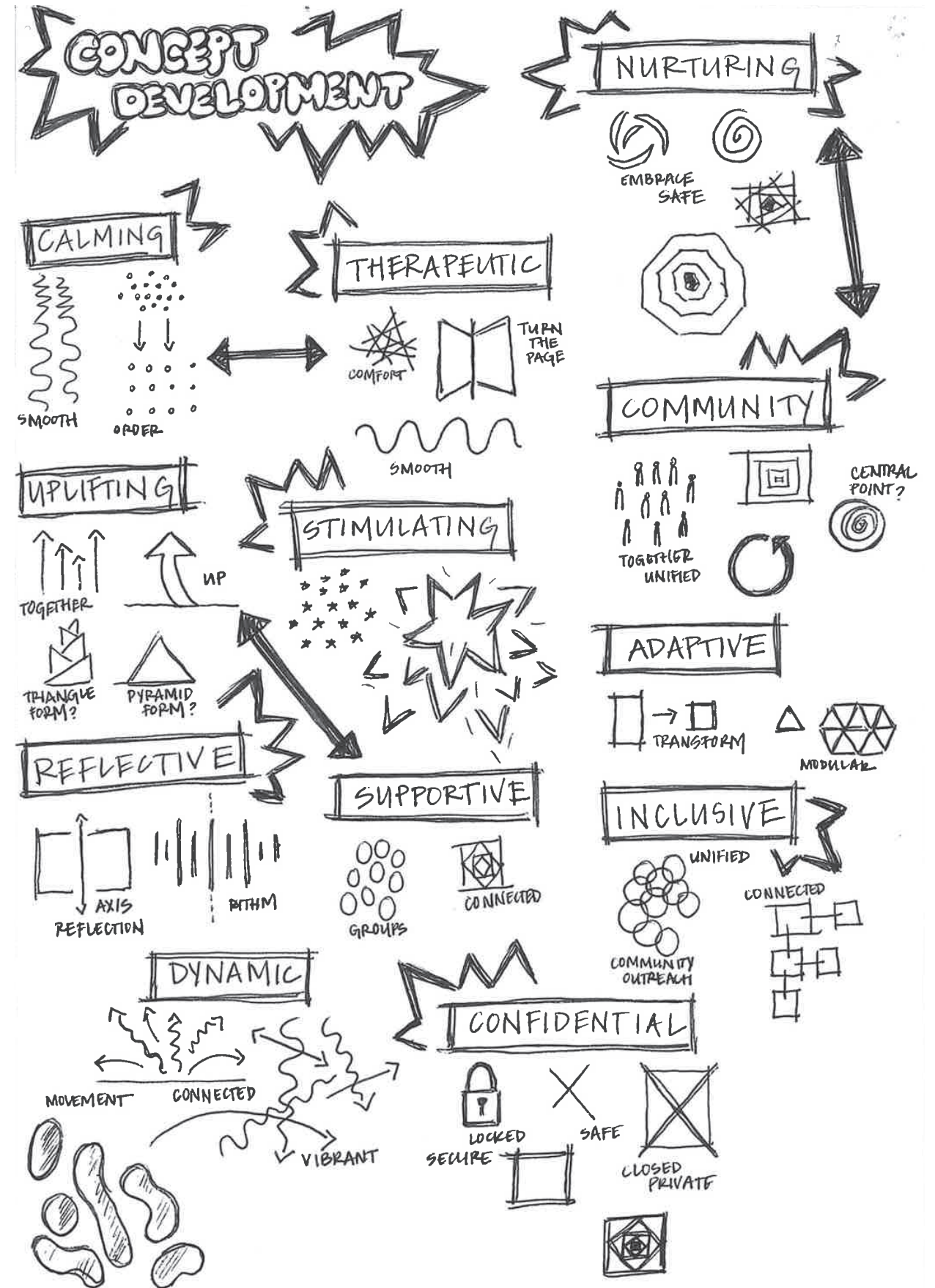
reflection concept model



as-built model



reflective material exploration



CONCEPT DEVELOPMENT

- REFLECT UPON YOUR PAST & GROW INTO THE FUTURE THROUGH ART THERAPY PRACTICE.
- WHAT MATERIALS REFLECT?
- BUILDING USED TO BE A WINDOW MANUFACTURING BUSINESS.
 - LARGE REFLECTING WINDOWS ON THE FACADE



WHAT ARE THE SIMILARITIES & DIFFERENCES BETWEEN THE REFLECTIONS OFF THE WINDOWS VS. OFF THE WATER?

HOW DO OBJECTS CHANGE IN THE REFLECTIONS?

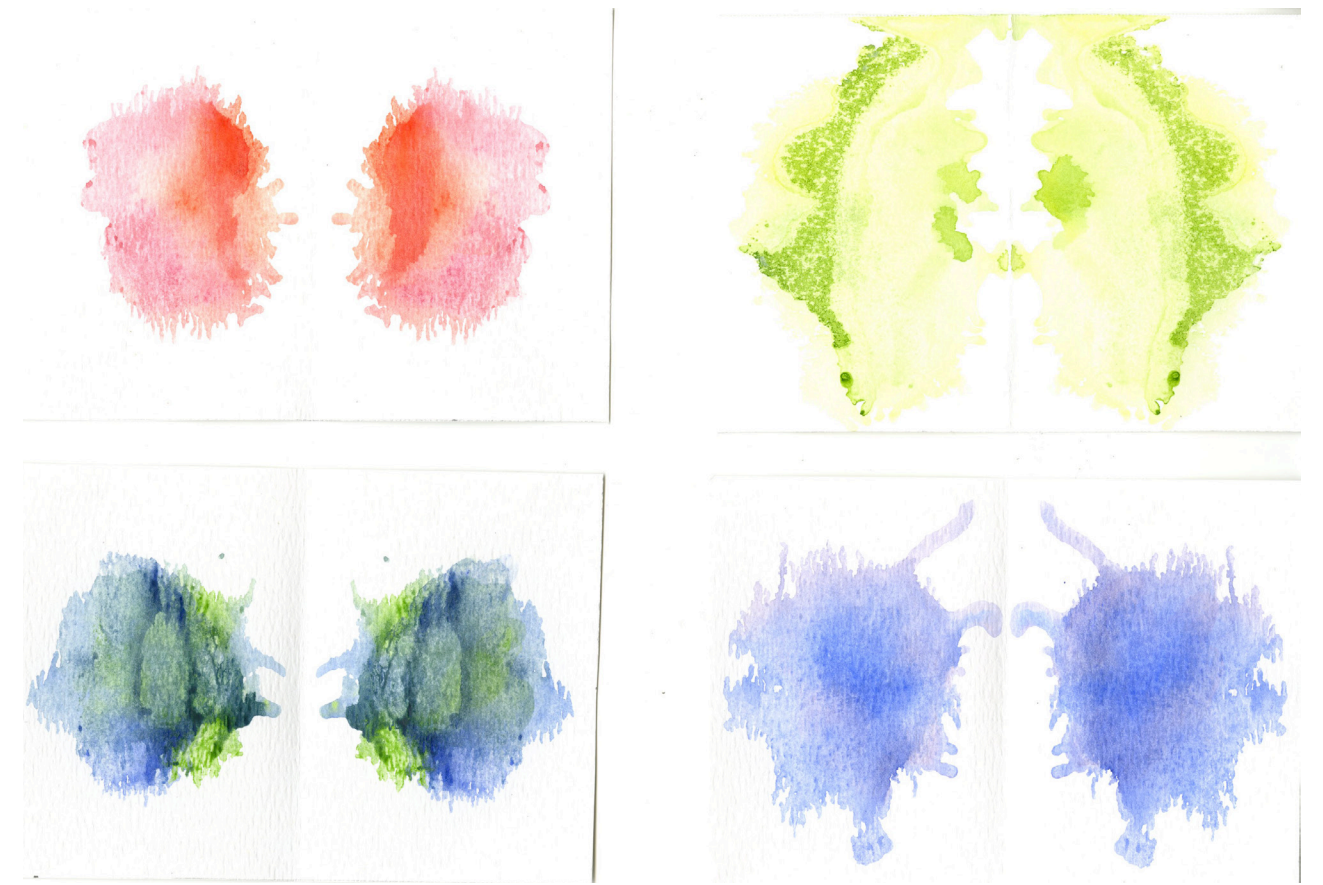
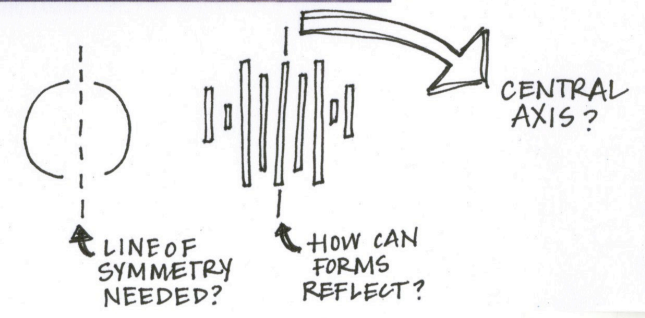
WHAT OBJECTS ARE REFLECTED IN THE IMAGE:

- TREES
- SKY
- BUILDING MATERIALS
- SCULPTURES
- PLANTS/NATURAL MATERIALS

WHAT ARE THE NEEDS/ IMPACTS OF THE RIPPLES?

WHAT ARE THE "RIPPLES" IN LIFE?

- SYNONYMS:
- MIRROR
 - ECHO
 - MIMIC
 - PORTRAY
 - CONSIDERATION
 - THOUGHT
 - EXPRESS



watercolor studies

To get to the concept of reflection, I worked through a series of diagrams and concept models. These diagrams were explorations of the different forms of reflections, whether they occur in water, on glass, or are a more perfect reflection, in a mirror. Different mediums, such as watercolor and photography were also used to help work through the exploration process.

SECTION 04

SCHEMATIC DESIGN

PROGRAM + BUILDING CODE

PLAYFUL LOBBY

200 SF
Assembly Group: A-3

The playful lobby invites children to enjoy playing with the toys and sensory elements available for them.

QUIET LOBBY

200 SF
Assembly Group: A-3

Reflection and mediating are welcome in this space. Sound machines, safe space niches in the walls, and comfortable seating were designed to make the client feel comfortable before entering their therapy session.

ADMINISTRATIVE SUITE

250 SF
Assembly Group: Business Group B

Supports the everyday functions of the staff and their needs to help the center run. This includes the copy room, desks for the administrative staff, and a paper shredder to keep confidential files secure.

EMPLOYEE BREAK ROOM

120 SF
Assembly Group: Business Group B

Staff lounge and relaxation space away from their offices. Includes a kitchenette, refrigerator, and microwave.

MEETING ROOM

250 SF
Assembly Group: Business Group B

Staff space for meetings, gatherings, or meals together, including a large conference table for learning events.

ART THERAPY OFFICES

250 - 350 SF
Assembly Group: A-3

The functional support space for all therapeutic practices including talk and art therapy. These colorful and vibrant spaces support both the art therapist in their daily tasks as well as clients on their therapeutic journey.

FILING ROOM

65 SF
Assembly Group: Business Group B

Facility space for the paperwork and records for each client. All paperwork must be held on record for five years after the client has been seen.

SAFE SPACES

12 SF each
Assembly Group: A-3

Niches cut out of the walls either in the hallway on level two, or inside of the therapy offices on level one. These spaces invite clients to reflect if they need a moment to step away from the therapeutic practices.

ECO-ART THERAPY SPACE

5230 SF
Assembly Group: A-3

A place for reflection, therapeutic practices, and connection to nature. This space features design elements to help facilitate art therapy outdoors. Features include a reflection fountain, a garden, and a playground.

GROUP THERAPY

780 SF
Assembly Group: A-3

Larger therapeutic practices take place in this space. The vivid colors and tactile design features invite children to feel welcome into the space.

GROUP THERAPY LOBBY

580 sf
Assembly Group: A-3

Waiting area before or after group therapy sessions. This space also features an outdoor area that includes tables, chalkboards, and a playground to entertain clients before they begin their sessions.

CODE INFORMATION:

Total Gross Area: 9,360 SF
Total Program Net Area: 7,900 SF
Primary Occupancy: A
Total Number of Occupants: 65
Number of Water Closets: 5
Number of Lavatories: 5
Number of Water Fountains: 1
Number of Service Sinks: 1

PROGRAM + SPACE REQUIREMENTS



ECO-ART THERAPY SPACE
5320 SF



GROUP THERAPY LOBBY
580 SF



ADMINISTRATIVE
250 SF



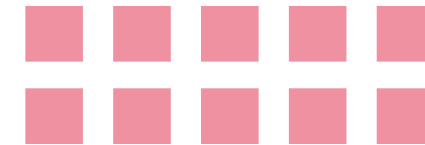
MEETING ROOM
250 SF



PLAYFUL LOBBY
200 SF



SAFE SPACES
12 SF EACH



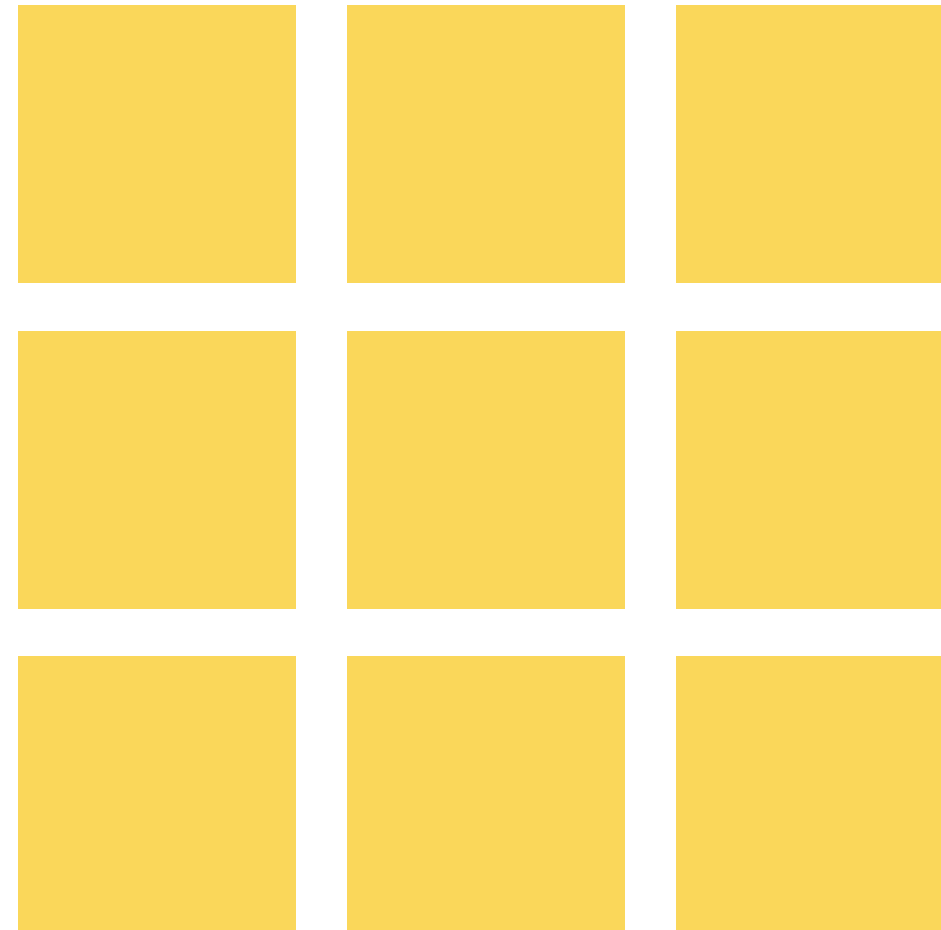
QUIET LOBBY
200 SF



**EMPLOYEE
BREAK ROOM**
122 SF



INDIVIDUAL ART THERAPY OFFICES
200 - 300 SF EACH



STORAGE
50-100 SF EACH



JANITORIAL
90 SF



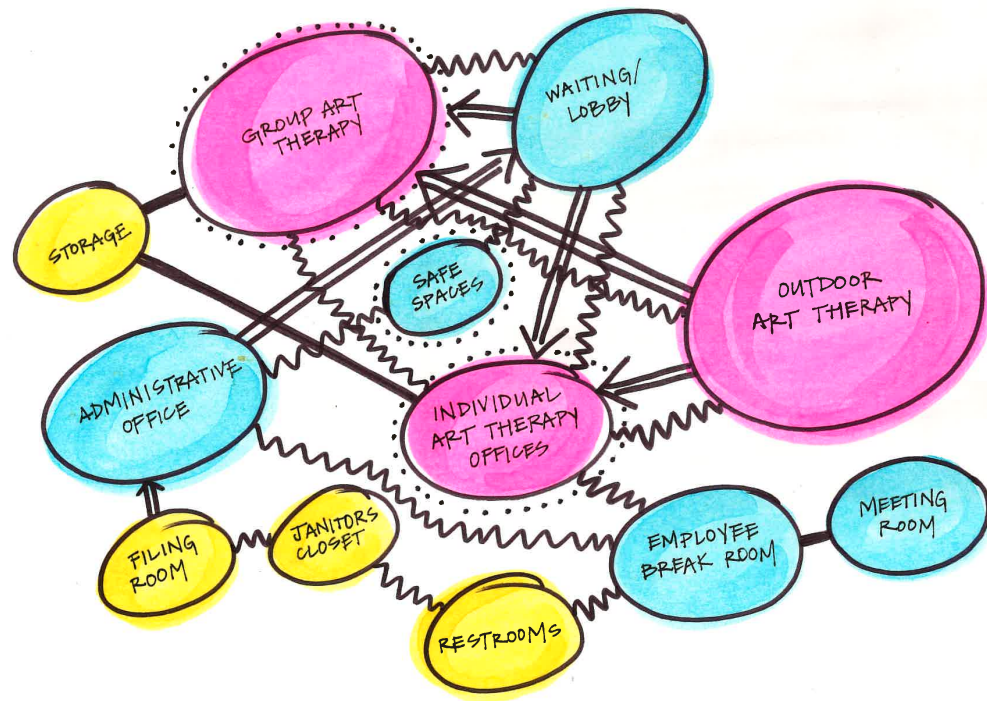
RESTROOMS
64 SF EACH



GROUP ART THERAPY
784 SF



BUBBLE DIAGRAM



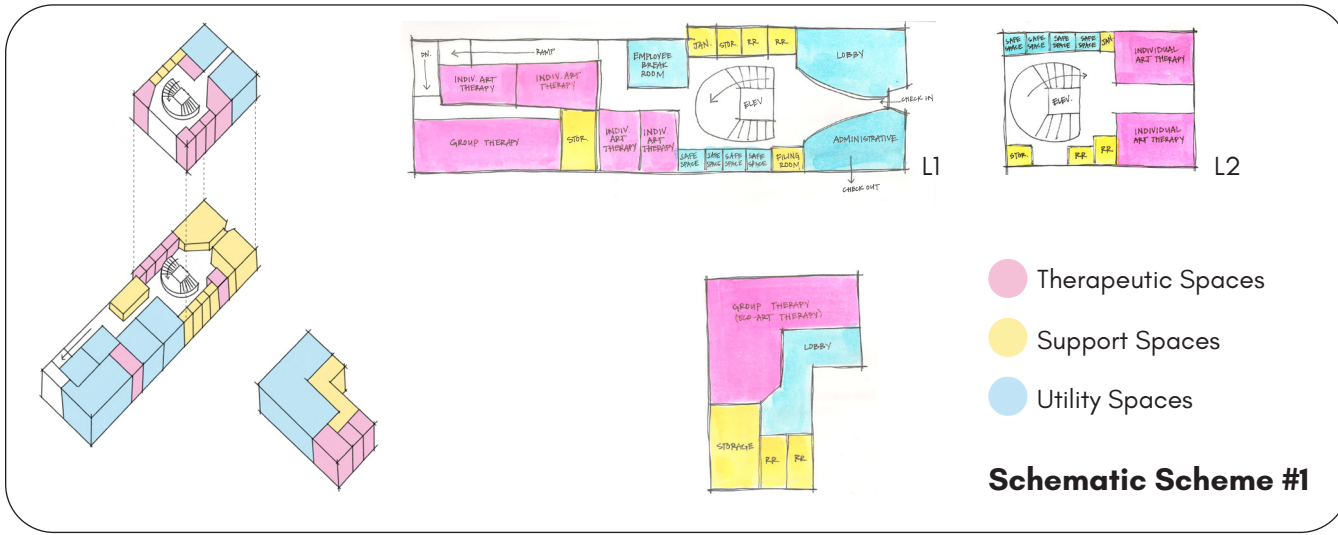
- LEGEND**
- THERAPEUTIC SPACES
 - SUPPORT SPACES
 - UTILITY
 - DIRECTLY ADJACENT
 - ~ SECONDARY ADJACENT
 - ACOUSTICALLY SOUND
 - ← SUPPORT SPACE TO:

ADJACENCY MATRIX

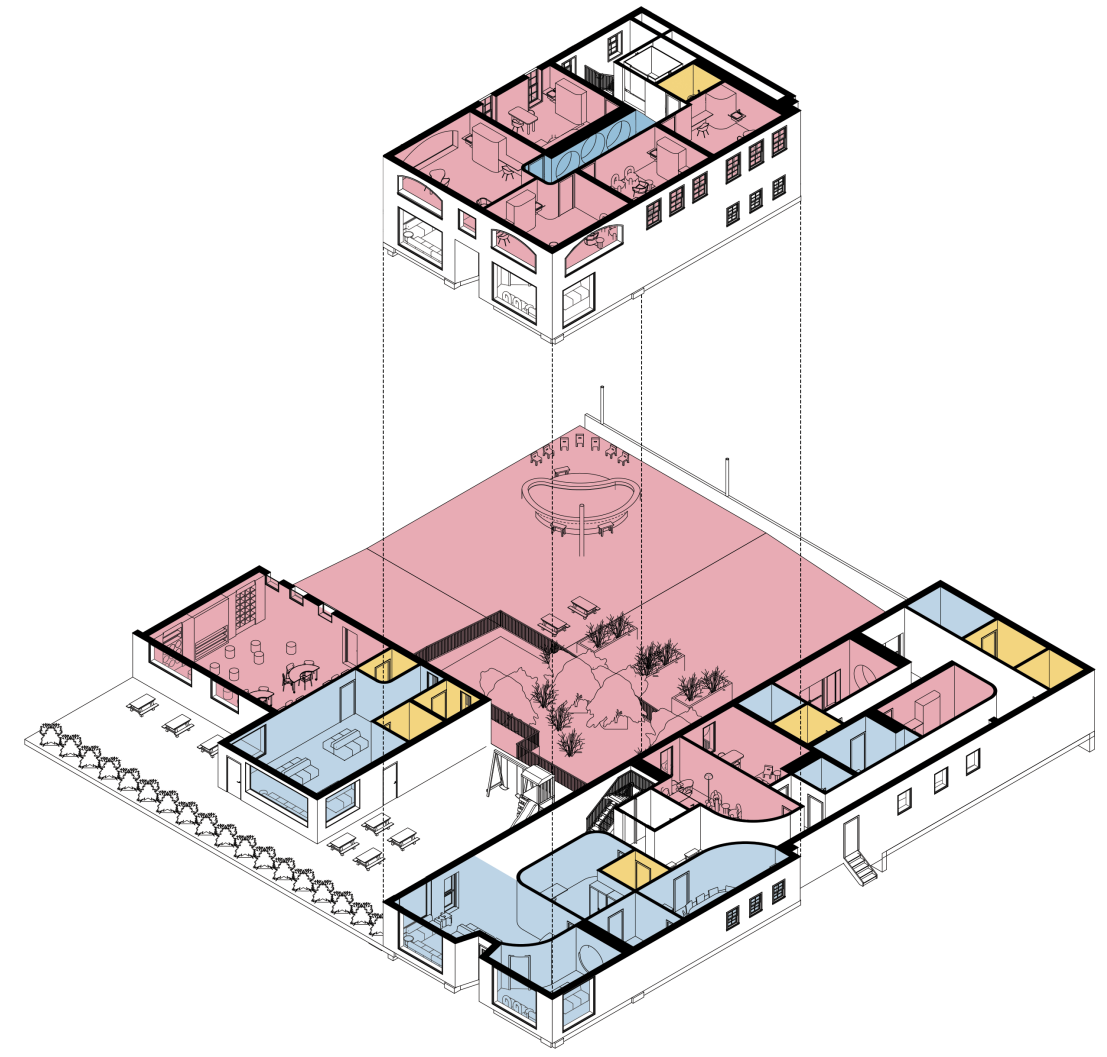
ADJACENCY MATRIX	AREA (SF)	ACOUSTIC PRIVACY	VISUAL PRIVACY	ACCESSIBILITY	DAYLIGHTING	FF + E NOTES
WAITING ROOM / LOBBY	1180	●	●	Y	Y	soft seating, lounge chairs, dim lighting
GROUP THERAPY ROOM	580	●	●	Y	Y	modular seating, soft seating, tables
INDIVIDUAL THERAPY / OFFICES	2280	●	●	Y	Y	desks, modular storage, easels, soft seating
SAFE SPACES	96	●	●	Y	N	soft/enclosed seating, acoustic materials
OUTDOOR THERAPY SPACE	5320	●	●	Y	Y	modular furniture that can be stored inside
RESTROOMS	300	●	●	Y	N	toilets, sinks, stalls, trashcans
EMPLOYEE BREAK ROOM	120	●	●	Y	Y	kitchenette, tables, chairs, soft seating
STORAGE	400	●	●	Y	N	storage racks, cabinets, hooks
JANITORS CLOSET	90	●	●	Y	N	mop sink, storage racks, cleaning supplies
ADMINISTRATIVE OFFICE	260	●	●	Y	Y	desks, filing cabinets, storage units, printer

- LEGEND**
- HIGH
 - MEDIUM
 - LOW
 - Y YES
 - N NO

SPACE PLANNING



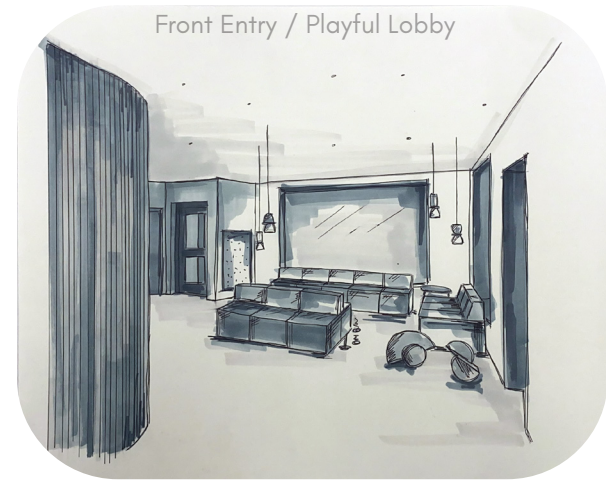
PARTI DIAGRAM



Legend

- Therapeutic Spaces**
Art Therapy Offices, Group Therapy, Eco-Art Therapy
- Therapeutic Support Spaces**
Waiting Areas, Administrative Office, Staff Spaces, Storage Rooms
- Utility Spaces**
Restrooms, Filing Room, Janitors Closet

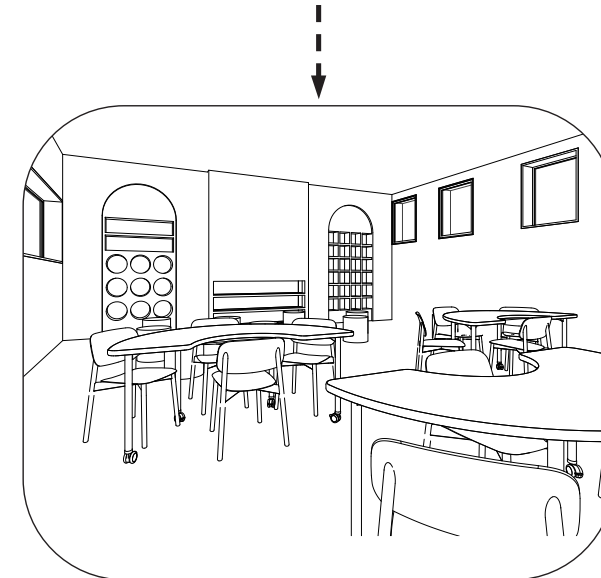
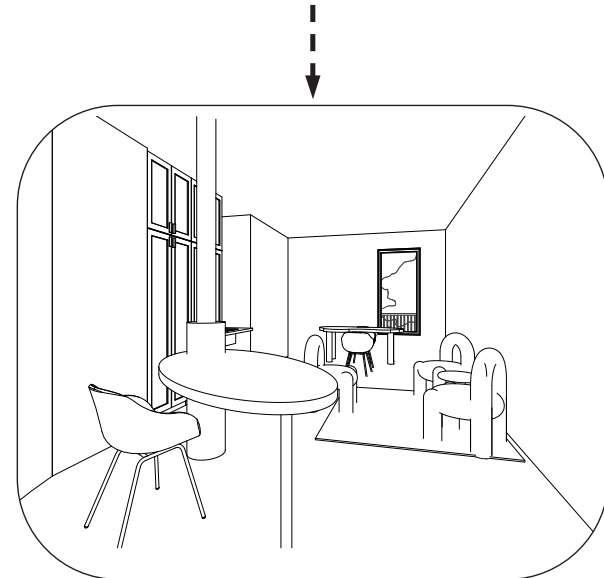
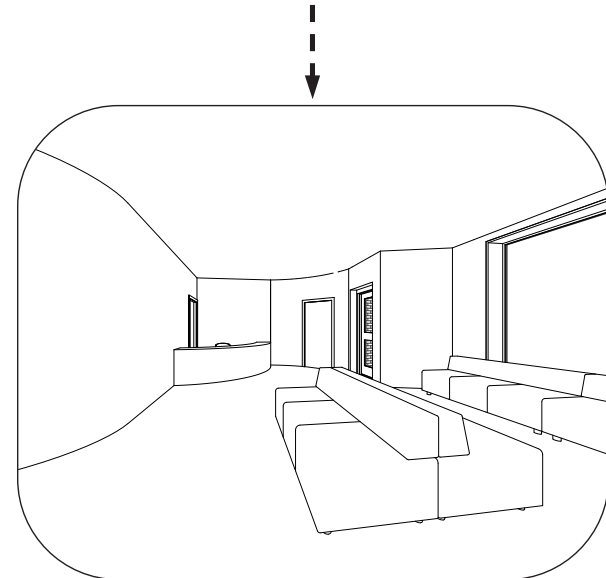
DESIGN PROCESS



Phase 1

During this phase of design development I worked through a series of hand sketched perspective renders to envision what each space could become.

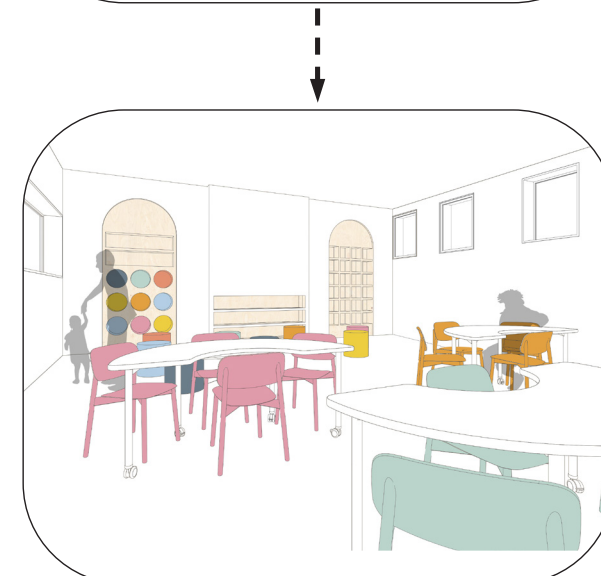
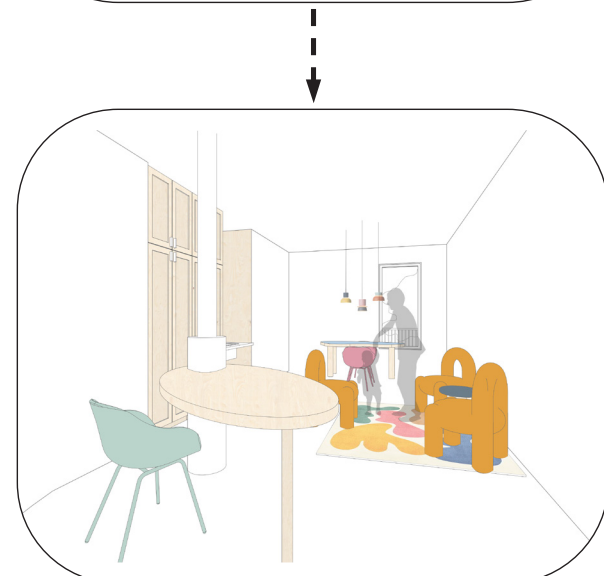
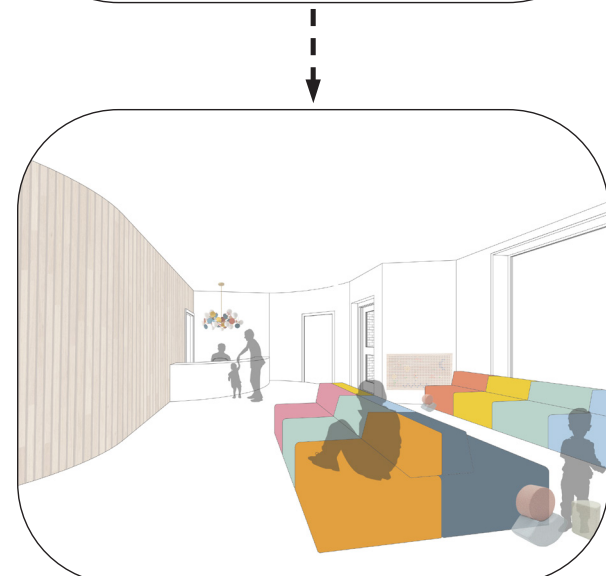
Medium: micron pen, markers



Phase 2

Phase 2 consisted of building the project in Revit and starting to lay out the design with the actual FF+E pieces that would be used for better space planning.

Medium: Revit (wire frame)



Phase 3

This phase built upon the Revit model I constructed in phase 2, and added color and scale figures to better understand the space. The areas of focus are highlighted in a diagrammatic way.

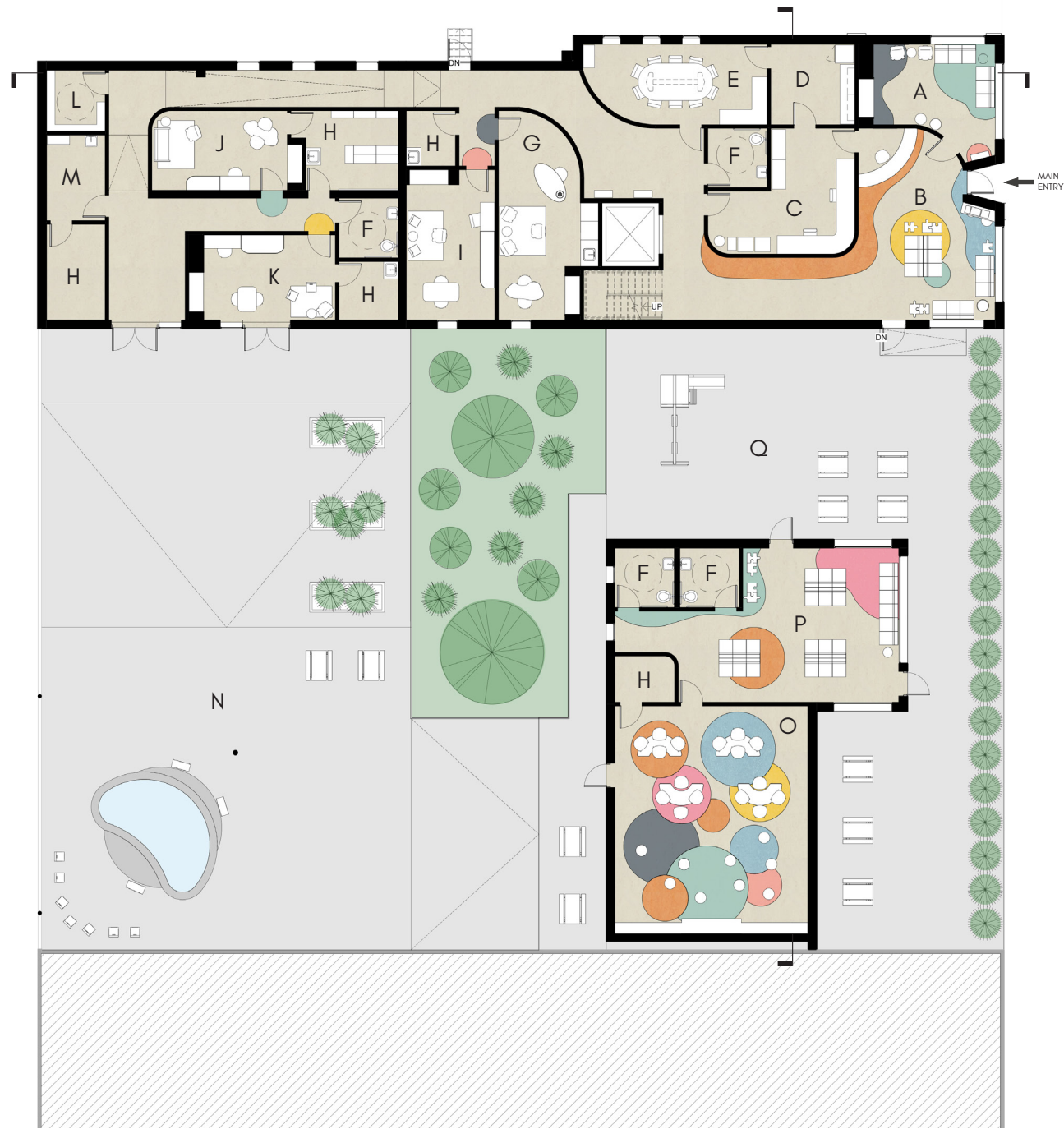
Medium: Revit, Photoshop



SECTION 5

DESIGN SOLUTION

FURNITURE PLANS



⌚ First Floor Level



⌚ Second Floor Level

Legend

- A Quiet Lobby
- B Front Entry / Playful Lobby
- C Administrative Office
- D Employee Break Room
- E Meeting Room
- F Restrooms
- G Midnight Masterpieces - Art Therapy Office
- H Storage
- I Coral Cove - Art Therapy Office
- J Botanical Bliss - Art Therapy Office
- K Sunset Studio - Art Therapy Office
- L Filing Room
- M Janitorial Closet
- N Eco-Art Therapy Space
- O Group Therapy
- P Group Therapy Lobby
- Q Outdoor Waiting Area
- R Navy Nights - Art Therapy Office
- S Baby Blue Haven - Art Therapy Office
- T Pink Poppy - Art Therapy Office
- U Clementine - Art Therapy Office
- V Sunshine Room - Art Therapy Office

W Cary Street

BUILDING SECTIONS



Transverse section perspective through annex and lobbies | NTS



Longitudinal section perspective through the ramp to the lower level | NTS

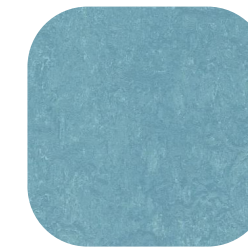


FRONT ENTRY / PLAYFUL LOBBY

The first stop in the client's therapeutic journey. The administrative staff help support the needs of the clients and encourage them to wait for their appointment in the playful lobby, or guide them beyond the door for a more reflective practice to the quiet lobby. The playful lobby invites children to enjoy playing with the toys and sensory elements available for them.



1



2



3



4

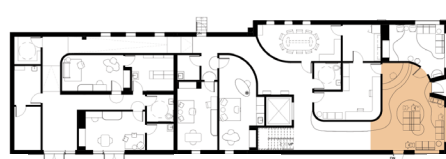


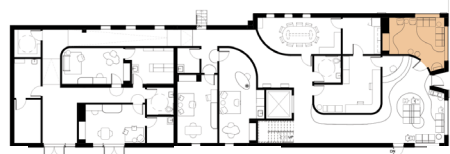
5



6

1. Natural Oak Acoustic Slat Wood Wall Panels, The Wood Veneer Hub - walls
2. Forbo, Marmoleum, Laguna - accent flooring
3. Forbo, Marmoleum, Mandarin - accent flooring
4. Forbo, Marmoleum, Lemon Zest - accent flooring
5. Cubit, Modular Sofa - lobby seating
6. Sixinch, Puzzle Pieces - lobby accent seating





QUIET LOBBY

Reflection and meditation are welcome in this space. Sound machines, safe space niches in the walls, and comfortable seating were designed to make the client feel comfortable before entering their therapy session.



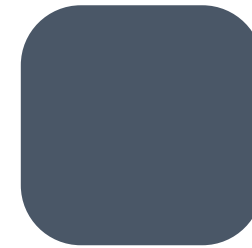
1



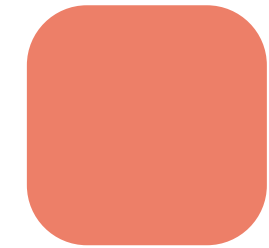
2



3



4



5



6

1. Natural Oak Acoustic Slat Wood Wall Panels, The Wood Veneer Hub - walls
2. Forbo, Marmoleum, color varies - flooring
3. Cubit, Modular Sofa - lobby seating
4. Benjamin Moore, Newburyport Blue - nice and accent wall paint
5. Benjamin Moore, Tuscon Coral - accent wall paint
6. 4. Dooq Details, Marlon Chair - lounge chairs

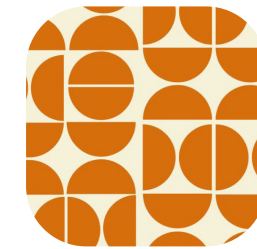


ART THERAPY OFFICES

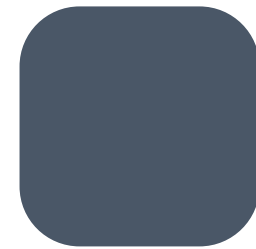
The functional support space for all therapeutic practices including talk and art therapy. These colorful and vibrant spaces support both the art therapist in their daily tasks as well as clients on their therapeutic journey.



1



2



3



4

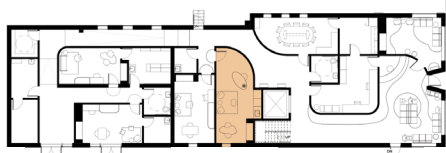


5



6

1. Forbo, Marmoleum, Stone - flooring throughout
2. Wallism, 70s Ornament - accent wallpaper
3. Benjamin Moore, Newburyport Blue - wall paint
4. Dooq Details, Marlon Chair - lounge chairs
5. Wiggleroom, Wiggleroom Table - art therapy work desk
6. LavLamp, Carpet - area rug





SAFE SPACES

Niches are cut out of the walls either in the hallway on level two, or inside of the therapy offices on level one. These spaces invite clients to reflect if they need a moment to step away from the therapeutic practices.



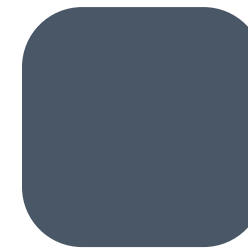
1



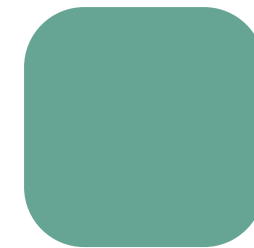
2



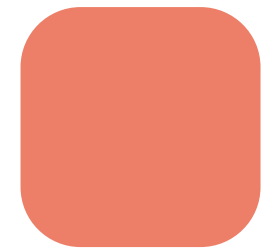
3



4



5



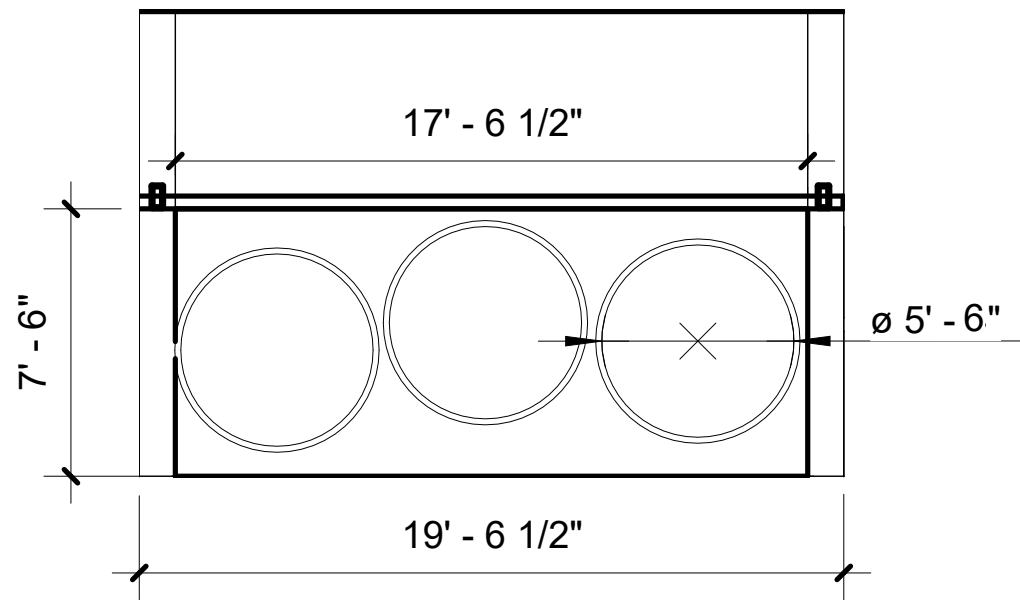
6

1. Forbo, Marmoleum, Stone - flooring throughout
2. Natural Oak Acoustic Slat Wood Wall Panels, The Wood Veneer Hub - walls
3. Benjamin Moore, Calm - wall paint
4. Benjamin Moore, Newburyport Blue - niche paint
5. Benjamin Moore, Summer Basket Green - niche paint
6. Benjamin Moore, Tuscon Coral - nice paint

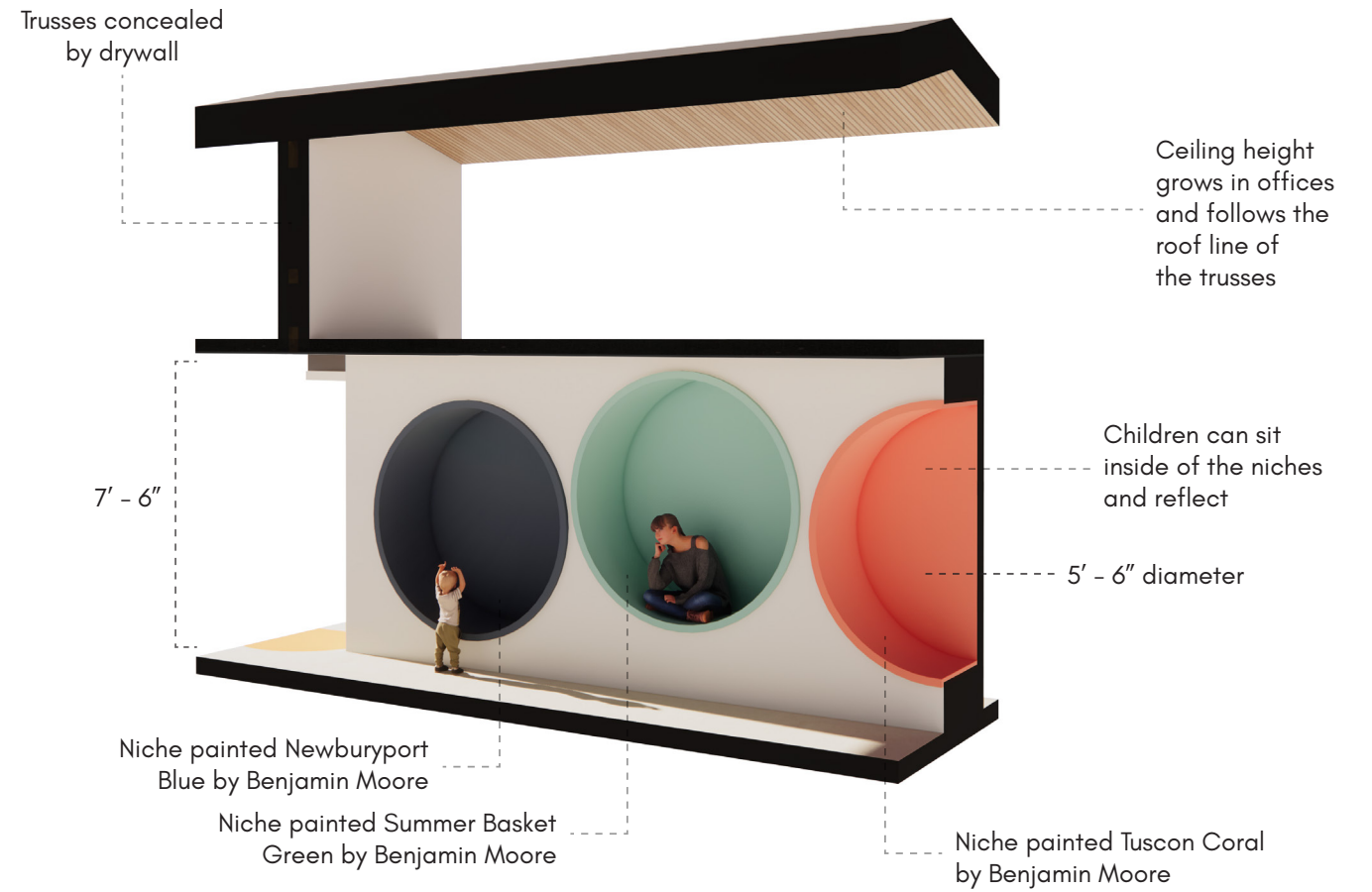
SAFE SPACES DETAIL

These niche cutouts in the wall are designed for children when they need to step away from tense therapeutic practices. When conducting my research, I learned it was valuable to have a separate space when things can get overwhelming for the client. Their design was centered around creating a comfortable space where children can feel safe.

On the first floor level, each art therapy office has a safe space niche inside, whereas on the second floor level, the safe spaces are located just outside of the offices in the shared corridor. This provides easy sightlines for the art therapists to be able to observe their clients, while they also can feel a sense of solidarity in their own environment.



3/16" = 1' - 0"





GROUP THERAPY

Larger therapeutic practices take place in this space. The vivid colors and tactile design features invite children to feel welcome and comfortable.



1



2



3



4

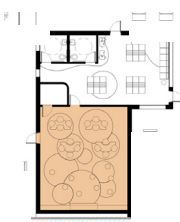


5



6

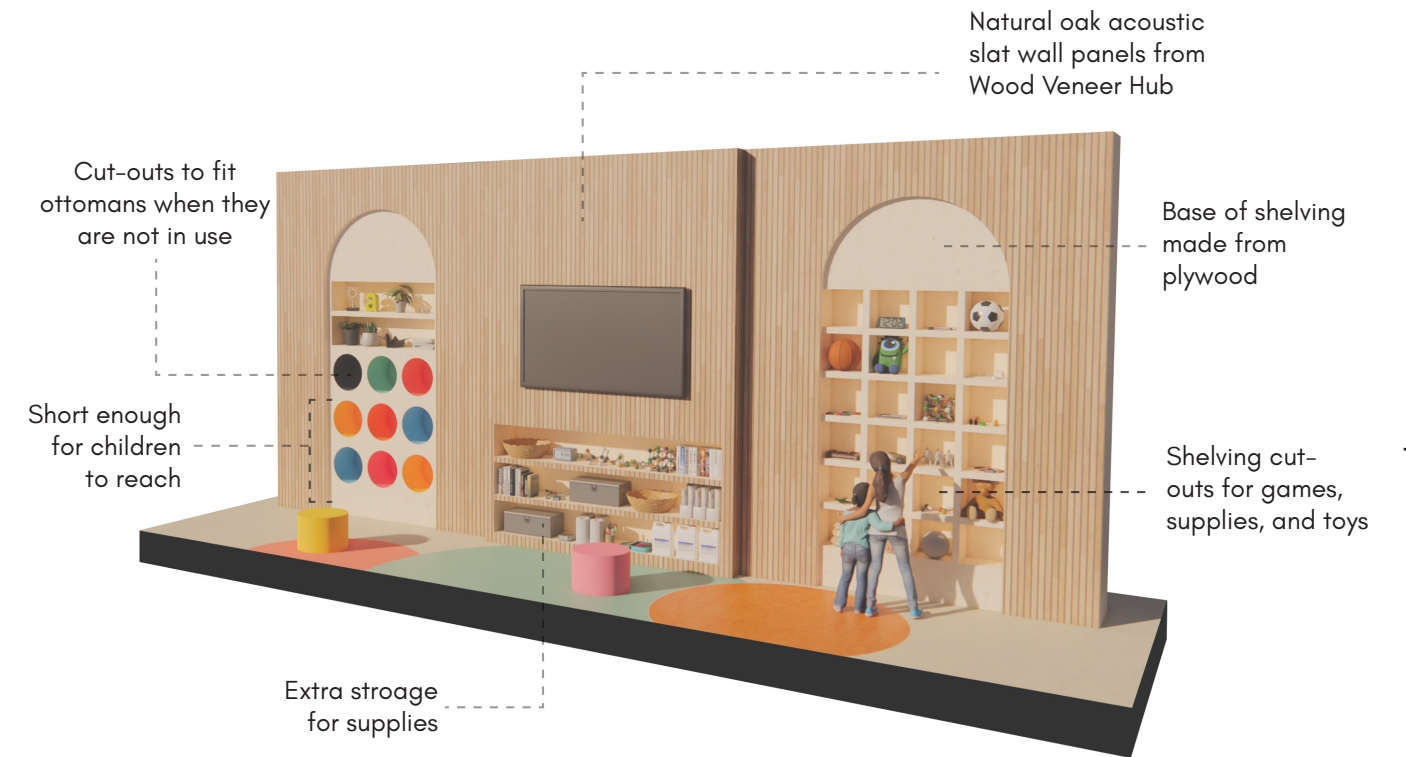
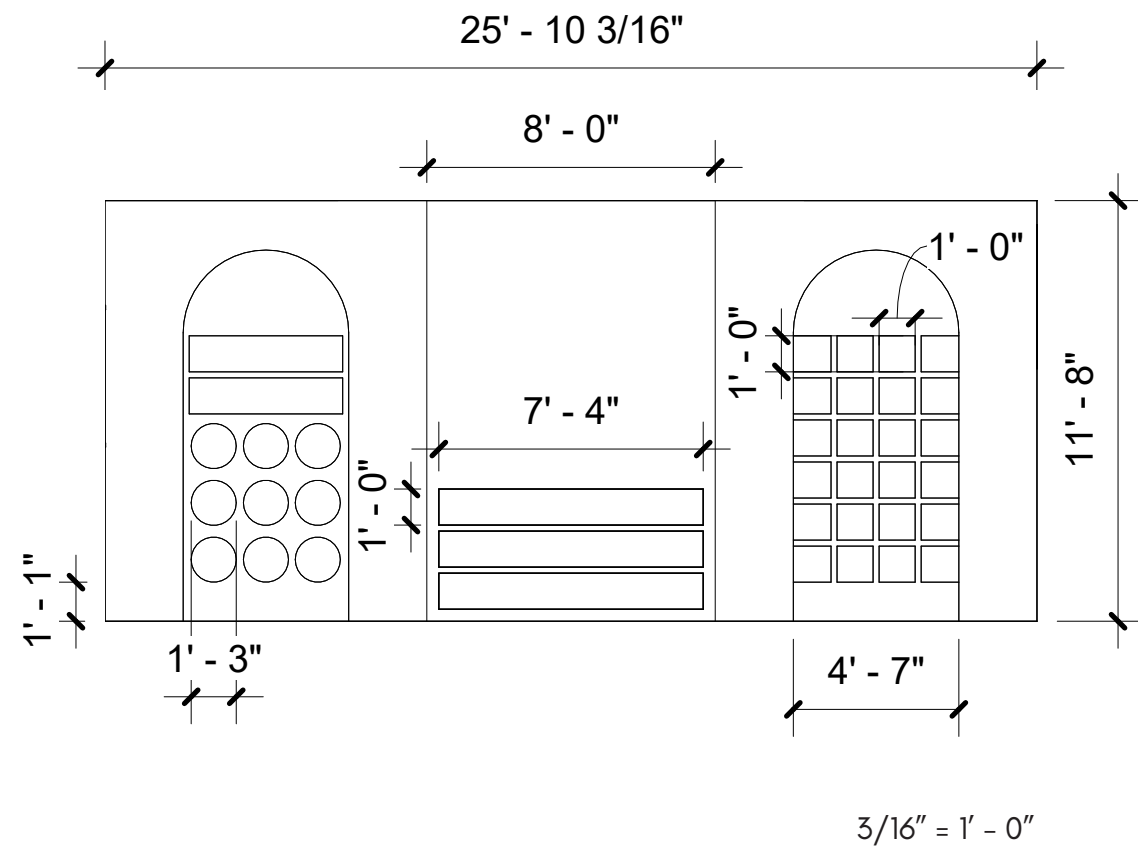
1. Natural Oak Acoustic Slat Wood Wall Panels, The Wood Veneer Hub - accent wall
2. Forbo, Marmoleum, color varies - flooring
3. Kirei, 12mm PET Felt, color varies - acoustic ceiling clouds
4. Steelcase, Half Moon Table - furniture
5. KlipKlap, KK Half Circle - ottoman
6. Swedish Ninja, Candy Circle - wall sconce



GROUP THERAPY MILLWORK DETAIL

This feature wall supports the main functions for group therapy and the majority of the storage for the space. On the left hand side of the millwork there are 9 cut-outs in the wall that were designed to perfectly fit the ottomans. When the group therapy session is more art focused that day and the tables are being used, children can easily store the ottomans in the wall. Each cubby is also color coordinated to the ottomans, so it is a sensory interaction for the children.

On the right hand side of the millwork there are 1' x 1' cubes for game and toy storage. There is also additional storage in the middle underneath the large TV screen. The millwork finish is an oak acoustic slat wall, which helps control the acoustics in the larger gathering space.





ECO-ART THERAPY

A place for reflection, therapeutic practices, and connection to nature. This space features design elements to help facilitate art therapy outdoors. Features include a reflection fountain, a garden, and a playground.



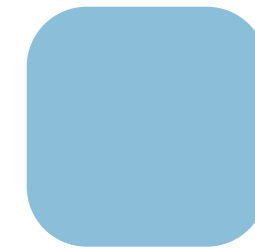
1



2



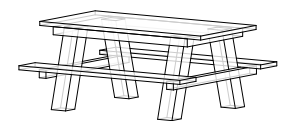
3



4

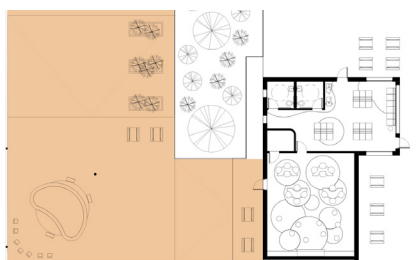


5



6

1. Buckingham Slate, Slate Tiles - exterior flooring
2. ecobirdy, Charlie Chair - outdoor furniture
3. ecoBirdy, Louisa Table - outdoor furniture
4. Custom awning in light blue
5. Custom awning in orange
6. Custom picnic table scaled to children



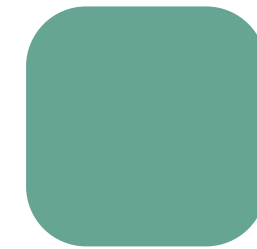


OUTDOOR WAITING AREA

A place for clients to wait and play before their group therapy session begins. This space features a playground and games to play with.



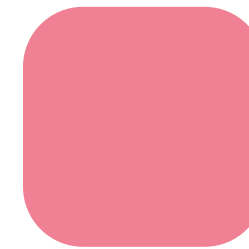
1



2



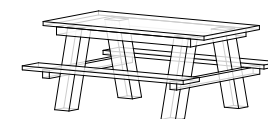
3



4

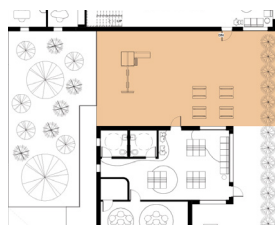


5



6

1. Existing brick to be repainted with a fresh coat of paint
2. Awning fabric to match Summer Basket Green paint
3. Awning fabric to match Lemon Sparkling Sunshine paint
4. Awning fabric to match Pink Popsicle paint
5. Existing concrete slab
6. Custom picnic table scaled to children



SECTION 06

SPECIFICATIONS

FURNITURE



PRODUCT Marlon Chair
MANUFACTURER Dooq Details
LOCATION Playful Lobby, Quiet Lobby, Group Therapy Lobby, Art Therapy Offices
DIMENSIONS 29.13"W x 27.56"D x 31.5"H
FINISH Upholstery
SUSTAINABILITY Sourced from Charish, a vintage/second-hand site that has ready to ship pieces
RATIONALE Low to the ground, comfortable seat height for children



PRODUCT Charlie Chair
MANUFACTURER ecoBirdy
LOCATION Outdoors
DIMENSIONS 15"L x 14"W x 19.7"H
FINISH Ecothylene (100% recyclable material made from recycled pieces of plastic children's toys)
SUSTAINABILITY Made from recycled materials and is 100% recyclable after use
RATIONALE Form is sculptural and made to scale for children, along with being 100% sustainable



PRODUCT Modular Sofa
MANUFACTURER Cubit
LOCATION All Lobbies
DIMENSIONS Varies
FINISH Upholstery
SUSTAINABILITY Made from durable/long lasting materials
RATIONALE Low to the ground for a comfortable seat height for children, modular pieces for multiple configurations



PRODUCT Luisa Table
MANUFACTURER ecoBirdy
LOCATION Outdoors
DIMENSIONS 29.5"L x 21.6"W x 19.7"H
FINISH Ecothylene (100% recyclable material made from recycled pieces of plastic children's toys)
SUSTAINABILITY Made from recycled materials and is 100% recyclable after use
RATIONALE Form is sculptural and made to scale for children, along with being 100% sustainable



PRODUCT Modern Ottoman
MANUFACTURER Apollo Furniture
LOCATION Group Therapy
DIMENSIONS 18.4" diameter x 15.1"H
FINISH Upholstery
SUSTAINABILITY Fabric is durable and withstands wear and tear
RATIONALE Low to the ground/modular ottoman that fits into custom millwork to turn into an art piece



PRODUCT Wiggleroom Coffee Table
MANUFACTURER Wiggleroom Furniture
LOCATION Therapy Offices
DIMENSIONS 45"L x 22"W x 14"H
FINISH Plywood, Spill-proof laminate
SUSTAINABILITY Made from durable/long lasting materials with a protective coating
RATIONALE Organic, art-like form which promotes creativity

FURNITURE



PRODUCT Half Moon Table
MANUFACTURER Steelcase
LOCATION Group Therapy
DIMENSIONS 21 1/2" H - 31 1/2" H (adjustable w/ casters)
 Overall Width: 65" W
FINISH Laminate
SUSTAINABILITY Made from durable materials
RATIONALE Shape invites collaboration and allows therapists to sit on one side, and clients on the other. On casters for modularity, durable



PRODUCT Area Rug
MANUFACTURER Lavlamp
LOCATION Art Therapy Office
DIMENSIONS 8'x10'
FINISH Nylon
SUSTAINABILITY Recyclable
RATIONALE Colorful and fun forms, looks like an art piece



PRODUCT About A Collection (AAC) 226
MANUFACTURER HAY
LOCATION Art Therapy Offices, Group Therapy
DIMENSIONS 82.0cm H x 59cm W x 54.0cm D
FINISH Colored recycled plastic
SUSTAINABILITY Uses 100% post-consumer recycled plastic
RATIONALE Comes in a variety of colors, good for different purposes (desk, task work, collaboration)



PRODUCT Washed Corduroy Floor Pillow
MANUFACTURER Urban Outfitters
LOCATION Art Therapy Offices
DIMENSIONS 18"L x 18"W x 4.5"H
FINISH Upholstery
SUSTAINABILITY Fabric is durable and stain resistant
RATIONALE Easy to move/put away when needed during therapy sessions



PRODUCT Waldorf Toddler Table
MANUFACTURER Tatoy
LOCATION Art Therapy Offices
DIMENSIONS Table top: 24L" x 20W" x 43"H
 Chair: (12" seat height)
FINISH Natural varnish
SUSTAINABILITY Made of hard wood for durability
RATIONALE Low to the ground and made to the scale of children

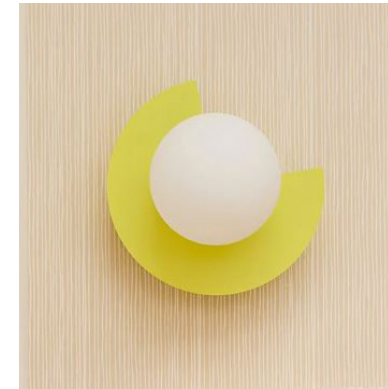


PRODUCT Loop
MANUFACTURER Sancal
LOCATION Therapy Offices
DIMENSIONS 230cm L x 122cm D x 78cm H
FINISH Upholstery
SUSTAINABILITY Made from durable/long lasting materials with a protective coating
RATIONALE Sculptural form that comes in a variety of colors

FIXTURES



PRODUCT Macri Pendant
MANUFACTURER Mintbliss
LOCATION Art Therapy Offices
DIMENSIONS 18-29cm diameter
FINISH Metal
SUSTAINABILITY Uses LED light bulbs
RATIONALE Colorful shell that blends with color palette, comes in different colorways and sizes



PRODUCT Candy, Little Circle + Big Circle Lamp
MANUFACTURER Sweedish Ninja
LOCATION Group Therapy
DIMENSIONS Little: 28cm L x 20cm D x 28 cm H, Glass globe: 16 cm; Big: 28cm L x 20 cm D x 28cm H , Glass globe: 22 cm
FINISH Powder coated steel with opaline glass globe
SUSTAINABILITY Uses LED light bulbs
RATIONALE Colorful shell that blends with color palette, comes in different colorways and sizes



PRODUCT Pop-Art Modular Chandelier
MANUFACTURER Inspira Lifestyles
LOCATION Check-in Desk
DIMENSIONS 15 head cluster
FINISH Glass, Painted Metal
SUSTAINABILITY Uses LED light bulbs
RATIONALE Colorful shell that blends with color palette in a fun form that promotes creativity when you first walk in



PRODUCT Bow Pendant
MANUFACTURER Arancia Lighting
LOCATION Check-in Desk
DIMENSIONS 48" diameter curve
FINISH Aluminum, white powder coat
SUSTAINABILITY Dimmable
RATIONALE Curve of light follows the curve of the front desk for a seamless light path



PRODUCT Ondaria Surface Mount
MANUFACTURER Zumtobel
LOCATION Storage Closets, Hallway, Admin Spaces
DIMENSIONS 24" diameter
FINISH White enamel aluminum
SUSTAINABILITY LRO technology, dimmable
RATIONALE Has sound absorbing acoustic version and emits necessary light for maximum task visibility



PRODUCT Aura Light
MANUFACTURER Matter
LOCATION Art Therapy Offices
DIMENSIONS 43"L x 3"D x 3.5"H
FINISH Bio-polyester, powder-coated steel fixing, steel suspension cable
SUSTAINABILITY Uses LED light tube
RATIONALE Colorful shell that blends with color palette

EQUIPMENT



PRODUCT Soho Wall Mount Sink
MANUFACTURER Kohler
LOCATION Art Therapy Offices, Storage
DIMENSIONS 20" x 18"
FINISH White vitreous china
SUSTAINABILITY UL Certified Environmental Product, made from very durable material that will last a long time
RATIONALE Sinks to be provided in every art therapy office



PRODUCT Purist Sink Faucet
MANUFACTURER Kohler
LOCATION Restrooms
DIMENSIONS 10"W x 9" D x 12.5" H
FINISH Metal
SUSTAINABILITY Premium metal construction for durability and reliability, finish resists corrosion and tarnishing
RATIONALE Sleek faucet for restrooms



PRODUCT Loure Touchless Faucet
MANUFACTURER Kohler
LOCATION Art Therapy Offices
DIMENSIONS 8.5" L x 1.5" H
FINISH Brass
SUSTAINABILITY Uses a sensor to automatically shut off and conserve water when not in use
RATIONALE Sinks to be provided in every art therapy office



PRODUCT LG LED UQ75 43 inch 4K Smart TV 2022
MANUFACTURER LG
LOCATION Group Therapy
DIMENSIONS 43"
FINISH Electronic
SUSTAINABILITY 73.2g of post consumer recycled material is applied in the components
RATIONALE Screen for large displays during group therapy



PRODUCT Kingston Toilet
MANUFACTURER Kohler
LOCATION Restrooms
DIMENSIONS 16.5" seat height, 32" H x 29" D x 18.5"W
FINISH Porcelain
SUSTAINABILITY 1.28 gpf
RATIONALE Toilets to be provided in every restroom



PRODUCT Peerless-AV SF640 Universal Flat Wall Mount for 32 to 50" Displays
MANUFACTURER Peerless
LOCATION Group Therapy
DIMENSIONS Designed to mount flat-panel displays 32 - 50"
FINISH Metal
SUSTAINABILITY -
RATIONALE Used to wall mount TV above

FINISHES



PRODUCT Marmoleum - Stone
MANUFACTURER Forbo Flooring Systems
LOCATION Flooring throughout
DIMENSIONS Varies
FINISH Topshield2
SUSTAINABILITY Made from natural ingredients (flax seed oil, rosin binders, wood flour, limestone) and contributes to LEED credits
RATIONALE Durable flooring that is also sustainable and comes in a variety of colors



PRODUCT Marmoleum - Mandarin
MANUFACTURER Forbo Flooring Systems
LOCATION In front of art therapy offices
DIMENSIONS Varies
FINISH Topshield2
SUSTAINABILITY Made from natural ingredients (flax seed oil, rosin binders, wood flour, limestone) and contributes to LEED credits
RATIONALE Durable flooring that is also sustainable and comes in a variety of colors



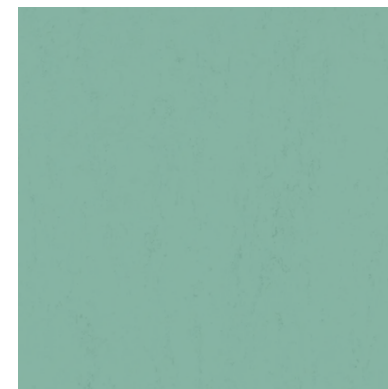
PRODUCT Marmoleum - Lemon Zest
MANUFACTURER Forbo Flooring Systems
LOCATION In front of art therapy offices
DIMENSIONS Varies
FINISH Topshield2
SUSTAINABILITY Made from natural ingredients (flax seed oil, rosin binders, wood flour, limestone) and contributes to LEED credits
RATIONALE Durable flooring that is also sustainable and comes in a variety of colors



PRODUCT Marmoleum - Custom Color - Pink Poppy
MANUFACTURER Forbo Flooring Systems
LOCATION In front of art therapy offices
DIMENSIONS Varies
FINISH Topshield2
SUSTAINABILITY Made from natural ingredients (flax seed oil, rosin binders, wood flour, limestone) and contributes to LEED credits
RATIONALE Durable flooring that is also sustainable and comes in a variety of colors

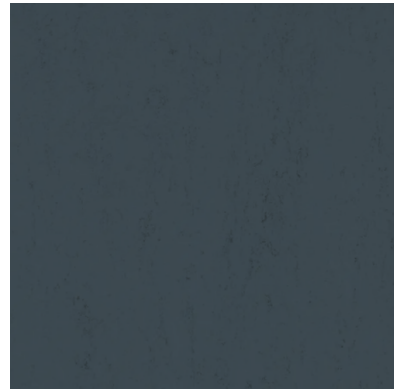


PRODUCT Marmoleum - Laguna
MANUFACTURER Forbo Flooring Systems
LOCATION In front of art therapy offices
DIMENSIONS Varies
FINISH Topshield2
SUSTAINABILITY Made from natural ingredients (flax seed oil, rosin binders, wood flour, limestone) and contributes to LEED credits
RATIONALE Durable flooring that is also sustainable and comes in a variety of colors

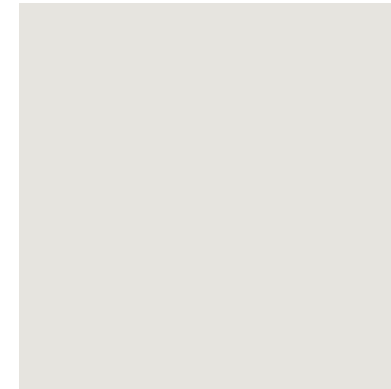


PRODUCT Marmoleum - Custom Color - Green
MANUFACTURER Forbo Flooring Systems
LOCATION In front of art therapy offices
DIMENSIONS Varies
FINISH Topshield2
SUSTAINABILITY Made from natural ingredients (flax seed oil, rosin binders, wood flour, limestone) and contributes to LEED credits
RATIONALE Durable flooring that is also sustainable and comes in a variety of colors

FINISHES



PRODUCT Marmoleum - Custom Color - Navy
MANUFACTURER Forbo Flooring Systems
LOCATION In front of art therapy offices
DIMENSIONS Varies
FINISH Topshield2
SUSTAINABILITY Made from natural ingredients (flax seed oil, rosin binders, wood flour, limestone) and contributes to LEED credits
RATIONALE Durable flooring that is also sustainable and comes in a variety of colors



PRODUCT Calm Eco-Spec Paint
MANUFACTURER Benjamin Moore
LOCATION Ceilings, Walls
DIMENSIONS n/a
FINISH Flat
SUSTAINABILITY Eco-spec paint is an eco-responsible interior paint
RATIONALE General white paint for ceilings and walls



PRODUCT Marmoleum - Custom Color - Coral
MANUFACTURER Forbo Flooring Systems
LOCATION In front of art therapy offices
DIMENSIONS Varies
FINISH Topshield2
SUSTAINABILITY Made from natural ingredients (flax seed oil, rosin binders, wood flour, limestone) and contributes to LEED credits
RATIONALE Durable flooring that is also sustainable and comes in a variety of colors



PRODUCT Aquarium Blue Eco-Spec Paint
MANUFACTURER Benjamin Moore
LOCATION Walls, Ceilings, Furniture, Millwork
DIMENSIONS n/a
FINISH Flat
SUSTAINABILITY Eco-spec paint is an eco-responsible interior paint
RATIONALE Fun use of color for children's spaces



PRODUCT Natural Oak Acoustic Slat Wood Wall Panels
MANUFACTURER The Wood Veneer Hub
LOCATION Playful Lobby/Hallway
DIMENSIONS Varies
FINISH Wood paneling
SUSTAINABILITY Made from recycled content, FSC Certified
RATIONALE Beautifully designed wood-strip decorative wall panel that has high-quality acoustic properties



PRODUCT Citrus Orange Eco-Spec Paint
MANUFACTURER Benjamin Moore
LOCATION Walls, Ceilings, Furniture, Millwork
DIMENSIONS n/a
FINISH Flat
SUSTAINABILITY Eco-spec paint is an eco-responsible interior paint
RATIONALE Fun use of color for children's spaces

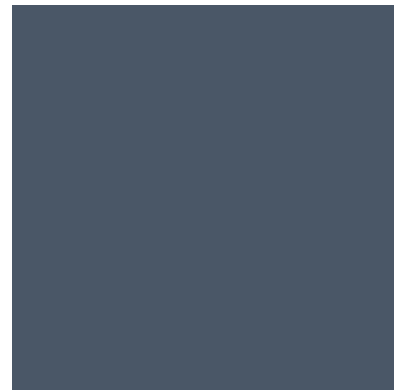
FINISHES



PRODUCT Tuscan Coral Eco-Spec Paint
MANUFACTURER Benjamin Moore
LOCATION Walls, Ceilings, Furniture, Millwork
DIMENSIONS n/a
FINISH Flat
SUSTAINABILITY Eco-spec paint is an eco-responsible interior paint
RATIONALE Fun use of color for children's spaces



PRODUCT Sparkling Sun Eco-Spec Paint
MANUFACTURER Benjamin Moore
LOCATION Walls, Ceilings, Furniture, Millwork
DIMENSIONS n/a
FINISH Flat
SUSTAINABILITY Eco-spec paint is an eco-responsible interior paint
RATIONALE Fun use of color for children's spaces



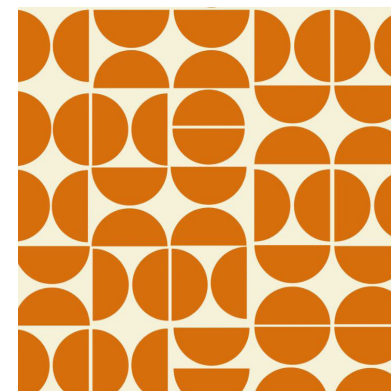
PRODUCT Newburyport Blue Eco-Spec Paint
MANUFACTURER Benjamin Moore
LOCATION Walls, Ceilings, Furniture, Millwork
DIMENSIONS n/a
FINISH Flat
SUSTAINABILITY Eco-spec paint is an eco-responsible interior paint
RATIONALE Fun use of color for children's spaces



PRODUCT Summer Basket Green Eco-Spec Paint
MANUFACTURER Benjamin Moore
LOCATION Walls, Ceilings, Furniture, Millwork
DIMENSIONS n/a
FINISH Flat
SUSTAINABILITY Eco-spec paint is an eco-responsible interior paint
RATIONALE Fun use of color for children's spaces



PRODUCT Pink Popsicle Eco-Spec Paint
MANUFACTURER Benjamin Moore
LOCATION Walls, Ceilings, Furniture, Millwork
DIMENSIONS n/a
FINISH Flat
SUSTAINABILITY Eco-spec paint is an eco-responsible interior paint
RATIONALE Fun use of color for children's spaces



PRODUCT 70s Ornament
MANUFACTURER Wallism
LOCATION Art Therapy Office
DIMENSIONS Varies
FINISH Wallpaper
SUSTAINABILITY 100% PVC-free & FSC-certified
RATIONALE Geometric shapes that reflect one another, wanted to include murals/colorful wallpaper in every office

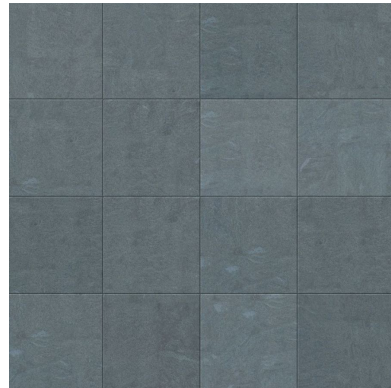
FINISHES



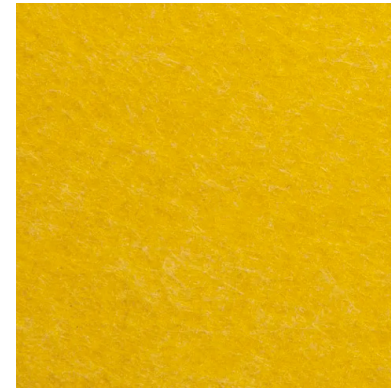
PRODUCT Plywood
MANUFACTURER Recycled
LOCATION Millwork
DIMENSIONS varies
FINISH Flat
SUSTAINABILITY Repurposed wood given a new life
RATIONALE Durable and great for millwork



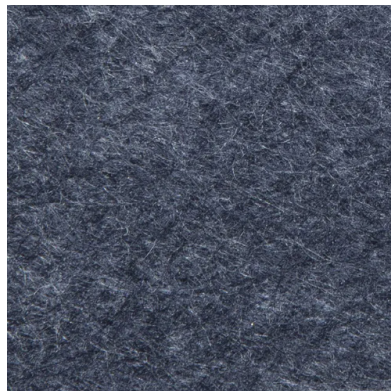
PRODUCT 12mm PET felt - 295 Mandarin
MANUFACTURER Kirei
LOCATION Group Therapy ceiling clouds
DIMENSIONS varies
FINISH Felt
SUSTAINABILITY Low VOC, contributes to LEED credits
RATIONALE Acoustic and colorful material



PRODUCT Slate tiles
MANUFACTURER Buckingham Slate
LOCATION Exterior flooring, ramp
DIMENSIONS 2'x2'
FINISH Polished
SUSTAINABILITY Comes from local manufacturer to reduce carbon footprint of product travel
RATIONALE Local material that is durable



PRODUCT 12mm PET felt - 108 Sunshine
MANUFACTURER Kirei
LOCATION Group Therapy ceiling clouds
DIMENSIONS varies
FINISH Felt
SUSTAINABILITY Low VOC, contributes to LEED credits
RATIONALE Acoustic and colorful material



PRODUCT 12mm PET felt - 365 Navy
MANUFACTURER Kirei
LOCATION Group Therapy ceiling clouds
DIMENSIONS varies
FINISH Felt
SUSTAINABILITY Low VOC, contributes to LEED credits
RATIONALE Acoustic and colorful material



PRODUCT 12mm PET felt - 551 Duck Egg
MANUFACTURER Kirei
LOCATION Group Therapy ceiling clouds
DIMENSIONS varies
FINISH Felt
SUSTAINABILITY Low VOC, contributes to LEED credits
RATIONALE Acoustic and colorful material

SECTION 07

RESOURCES

BIBLIOGRAPHY

"A Warm Clinic / RIGI Design" 28 Aug 2016. ArchDaily. Accessed 17 Oct 2023. <<https://www.archdaily.com/793964/a-warm-clinic-rigi-design>> ISSN 0719-8884

Adams, & Atherton, F. (2018). Editorial: Young Children and Art Education. *The International Journal of Art & Design Education*, 37(1), 4-5. <https://doi.org/10.1111/jade.12188>
Admin. (2018, August 30). Virtual tour our state-of-the-art facility. Chicago ABA Therapy. <https://chicagoabatherapy.com/virtual-tour/>

Alyssa Hayes (MS, LPC, ATR-BC, Clinical Director of Healing Sounds LLC and President of Virginia Art Therapy Association) in conversation with Caroline Ciccone, September 1, 2023.

Alyssa Hayes, email message to Caroline Ciccone, September 3, 2023.

Amaral, I., Guedes, G., & Gama, G. (2016). Designing a communication code for children. *The International Journal of Visual Design*, 10(3), 31-46. doi:<https://doi.org/10.18848/2325-1581/CGP/v10i03/31-46>

Ames, & Loebach, J. E. (2023). Applying Trauma-Informed Design Principles to Therapeutic Residential Care Facilities to Reduce Retraumatization and Promote Resiliency Among Youth in Care. *Journal of Child & Adolescent Trauma*. <https://doi.org/10.1007/s40653-023-00528-y>

Bice, S. (2017, August 11). Carytown. Rich Life in Richmond, Virginia. <https://richinrichmond.com/places-to-go/2017/8/11/carytown>

Bosgraaf, L., Spreen, M., Pattiselanno, K., & van Hooren, S. (2020). Art Therapy for Psychosocial Problems in Children and Adolescents: A Systematic Narrative Review on Art Therapeutic Means and Forms of Expression, Therapist Behavior, and Supposed Mechanisms of Change. *Frontiers in psychology*, 11, 584685. <https://doi.org/10.3389/fpsyg.2020.584685>

"Caboolture GP Super Clinic / Wilson Architects" 24 Mar 2017. ArchDaily. Accessed 14 Nov 2023. <<https://www.archdaily.com/805631/caboolture-gp-super-clinic-wilson-architects>> ISSN 0719-8884

Ceau u, F. (2023). Artistic Education and Creative Art-Therapy. *Review of Artistic Education*, 26(1), 236-241. <https://doi-org.proxy.library.vcu.edu/10.2478/rae-2023-0033>

Dalley, T., Rifkind, G., & Terry, K. (1993). *The Voices of Art Therapy: Image, Client, Therapist*. Routledge.

Dietkus, R. (2022). The call for Trauma Informed design research and practice. *Design Management Review*, 33(2), 26-31. doi:<https://doi.org/10.1111/drev.12295>

Edwards, D. G. (2004). *Art therapy (Ser. Creative Therapies in Practice)*. SAGE Publications.

Emilia. (2023). Art therapy, occupational and play therapy used as multidisciplinary tools for prevention and early recovery for children and adolescents at risk of developing mental health problems and juvenile delinquency. *European Psychiatry*, 66(S1), S817-S818. <https://doi.org/10.1192/j.eurpsy.2023.1733>

Fang, Li, Y., Wu, M., & Gan, F. (2022). Study on the validity of the theoretical paradigm of art therapy for vulnerable children. *Disability and Rehabilitation: Assistive Technology, ahead-of-print(ahead-of-print)*, 1-12. <https://doi.org/10.1080/17483107.2022.2074555>

Gussak, D., Rosal, M. L., & Councill, T. (2016). *Art Therapy with Children*. In *The Wiley Handbook of Art therapy* (pp. 242-250). essay, Wiley Blackwell.

Harpazi, S., Regev, D., Snir, S., & Raubach-Kaspy, R. (2020). Perceptions of art therapy in adolescent clients treated within the school system. *Frontiers in Psychology*, 11. <https://doi.org/10.3389/fpsyg.2020.518304>

History of Carytown Walking Tour. The Valentine Museum. (2023, December 7). <https://thevalentine.org/event/history-of-carytown-walking-tour/>

Hogan, & Coulter, A. M. (2014). What is art therapy? The art therapy environment: managing and using the space. In *The Introductory Guide to Art Therapy* (pp. 25-41). Routledge. <https://doi.org/10.4324/9781315849188-10>

Kay, L. (2020). *Therapeutic Approaches in Art Education (Ser. Art Education in Practice)*. Davis.

Lister, Tanguay, D., Snow, S., & D'Amico, M. (2009). Development of a Creative Arts Therapies Center for People With Developmental Disabilities. *Art Therapy*, 26(1), 34-37. <https://doi.org/10.1080/07421656.2009.10129316>

Liu, Z., Yang, Z., & Osmani, M. (2021). The relationship between sustainable built environment, art therapy and therapeutic design in promoting health and well-being. *International Journal of Environmental Research and Public Health*, 18(20), 10906. <https://doi.org/10.3390/ijerph182010906>

Norouzi, & Garza, C. M. (2021). Architecture for Children With Autism Spectrum Disorder and Their Therapists. *HERD*, 14(4), 147-156. <https://doi.org/10.1177/19375867211012489>

BIBLIOGRAPHY CONTINUED

Marijana Zupanic Benic. (2016). Findings of Visual Arts Research in Early Childhood and Primary Education. *Revija za elementarno izobra evanje*, 9(4), 55-63.

McDonald. (2022). Art therapy for children following adverse childhood experiences: An intervention development study. *The Arts in Psychotherapy*, 77, 101880-. <https://doi.org/10.1016/j.aip.2022.101880>

Moula, Z. (2022). Art therapy from around the world: School-Based and trauma-focused approaches. *International Journal of Art Therapy*, 27(1), 1-2. <https://doi.org/10.1080/17454832.2022.2031021>

"Pinheiros Club School / Oficina Aberta + Firma Arquitetura" [ECP - Escolinha do Clube Pinheiros / Oficina Aberta + Firma Arquitetura] 05 Oct 2022. ArchDaily. Accessed 17 Oct 2023. <<https://www.archdaily.com/990015/pinheiros-club-school-oficina-aberta-plus-firma-arquitetura>> ISSN 0719-8884

Ruckart Real Estate. (2021, February 23). Guide to the Carytown neighborhood in Richmond, Virginia. <https://ruckartre.com/guide-to-the-carytown-neighborhood-in-richmond/#:~:text=Carytown%20was%20officially%20>

Sahand, A. S., Pearson, M., & Gaines, K. (2020). Design strategies for enhancing cooperative behavior in children in daycare facilities. *The International Journal of Design in Society*, 14(3), 37-52. doi:<https://doi.org/10.18848/2325-1328/CGP/v14i03/37-52>

Van de Kamp, Admiraal, W., van Drie, J., & Rijlaarsdam, G. (2015). Enhancing divergent thinking in visual arts education: Effects of explicit instruction of meta-cognition. *British Journal of Educational Psychology*, 85(1), 47-58. <https://doi.org/10.1111/bjep.12061>

Yan, Chen, J., & Huang, J. (2019). School Bullying Among Left-Behind Children: The Efficacy of Art Therapy on Reducing Bullying Victimization. *Frontiers in Psychiatry*, 10, 40-40. <https://doi.org/10.3389/fpsy.2019.00040>

IMAGE SOURCES

Page 3 Gilliland, Pamela. (2017). *Water Reflection 5* [oil on canvas].

Page 5 Stone, Andrea B. (2011). *Infinite Mirror, Portland, OR* {photograph}.

Page 12 Hearing, P. (2020a). photograph.

Page 13 Spiske, M. (2018a). Paintings from my twelve year old nephew. photograph, Bayreuth.

Page 14 Valdivia, A. (2019a). photograph, Life Pacific College, San Dimas. RhondaK. (2016).

Page 15 RhondaK. (2016b). Paintbrushes drying. photograph, Nokomis.

Page 16 Winterfell. (2019). photograph, Shenzhen.

Page 17 Fox, M. (2017). photograph, Studio City, Los Angeles.

Pages 18-19 "A Warm Clinic / RIGI Design" 28 Aug 2016. ArchDaily. Accessed 17 Oct 2023. <<https://www.archdaily.com/793964/a-warm-clinic-rigi-design>> ISSN 0719-8884

Pages 20-21 "Pinheiros Club School / Oficina Aberta + Firma Arquitetura" [ECP - Escolinha do Clube Pinheiros / Oficina Aberta + Firma Arquitetura] 05 Oct 2022. ArchDaily. Accessed 17 Oct 2023. <<https://www.archdaily.com/990015/pinheiros-club-school-oficina-aberta-plus-firma-arquitetura>> ISSN 0719-8884

Pages 22-23 "Caboolture GP Super Clinic / Wilson Architects" 24 Mar 2017. ArchDaily. Accessed 14 Nov 2023. <<https://www.archdaily.com/805631/caboolture-gp-super-clinic-wilson-architects>> ISSN 0719-8884

Page 24 History of Carytown Walking Tour. The Valentine Museum. (2023, December 7). <https://thevalentine.org/event/history-of-carytown-walking-tour/>

Page 24 Bice, S. (2017, August 11). Carytown. Rich Life in Richmond, Virginia. <https://richinrichmond.com/places-to-go/2017/8/11/carytown>

Page 25 (2019). City of Richmond Department of Real Estate. Retrieved April 27, 2024, from <https://apps.richmondgov.com/applications/PropertySearch/Detail.aspx?pin=W0001243021>.

FINAL DELIVERABLES



Final Model

For my final detail model I constructed a section model of the safe space niches. I focused on how they work with the floor, ceiling, and wall planes. This model exemplifies how the ceiling plane in the hallways is much lower than those in the adjacent art therapy offices, where the ceiling plane grows and follows the lines of the roof. I also painted the niches in the model with the correlating colors that are intended to be used in each, which also highlights my color palette. Each niche is the appropriate scale for children, as well as the appropriate height off of the group for easy access.

Final Thoughts

During my final thesis presentation I received positive feedback and encouragement from the IDES faculty. I appreciate the different aspects of interior design knowledge that each professor brought to the discussion. Each professor has encouraged and inspired me in a different way in the classes that I have taken

with them, so it was great to have them all present and receive their feedback regarding my project.

Some thought-provoking questions were asked during the critique which sparked new conversations and a few ideas that I had not thought of when designing. Most prominently, a few questions about concept were discussed, such as how do I find the balance of incorporating concept into my space. I thought this was a great question because sometimes it is hard to find the balance between what is too little of concept and what is too extreme when designing.

Some other comments were regarding the materials and colors that I chose. The marmoleum flooring was applauded for being both sustainable and durable, as well as working well with my color palette, since it comes in a wide range of colorways. The faculty also stated that they were a fan of my color palette and enjoyed the usage of such vibrant and bold colors, especially since the clients are children. I think that this was one of the biggest challenges for me throughout the project since I do tend to use more neutral and subdued colors in my prior designs. I thoroughly enjoyed incorporating bold colors and patterns throughout. Overall, this project taught me a lot and I feel as though I grew as a designer exponentially throughout this year. It is amazing to think back to this point last year when I didn't have the wealth of knowledge on art therapy research, design itself, and each of the computer programs that I used in this thesis project. This has been such a wonderful experience and I can't wait to continue learning more in the industry, and apply the skills I learned in this program.



Final Presentation Board



ACKNOWLEDGMENTS

This thesis project would not have been possible without the support and inspiration from the following individuals. I could not have done this without you all.

My fellow classmates:

Chelcey Dunham, Che Shannon, Camille Rovani, Sydney Rakes, Tommye Dean, Aseel Alhaidari, Zixuan Guo, Se Young Lee, Caitlin McLean, and Sarah Alrumayh

Roberto Ventura | thesis instructor and advisor

Kristin Carleton | IDES professor and thesis advisor

Tim Hamnett | IDES professor and thesis committee member

Alyssa Hayes, LPC, ATR-BC | Clinical Director and Lead Art Therapist, Healing Sounds LLC. | thesis committee member

Julia Willinger, LPC, ATR-BC | Clinical Art Therapist at Lighthouse Behavioral Health Center

Alana Chandler, MS, LPC, ATR | Clinical Director and Senior Clinician, Glacier Health & Development Center

Adrianna Genier | Director of 2810, thesis site

Abby Barras | VCU IDES MFA Alum and designer of 2810, thesis site

Sara Reed | VCU Interior Design faculty

Laura Battaglia | VCU Interior Design faculty

Emily Smith | VCU Interior Design faculty

My IDES211 TA students who supported and encouraged me as I worked through this project.

Most importantly, my family. Mom, Dad, Lauren, and Ethan, thank you for always encouraging me to follow my passion.